

Farm managers

(Continued from Page C2)

it belongs because the topsoil is really the heart of the farm operation," said Weston W. Furrer, president of Farmers National Co. in Omaha, Neb. The farm management firm has more than 60 farm managers working in nine states for several thousand clients.

"Most owners are receptive to applying conservation when we point out areas on their land that are badly eroded," Furrer said.

"We explain that when conservation practices like terraces are built there may be a decrease in production for the first year or two. Over the long term, though,

the land will be more productive. The improvements we make will protect the land and help pay for the cost of the work."

One key to being a good farm manager is having a good tenant, Furrer said. "The tenant is the one doing the work."

Most tenants are receptive to

farming with conservation. "They would rather farm on the contour than fight gullies," said Furrer.

"Occasionally, we've had tenants fight installing conservation practices. In those cases, we make a tenant change. By the same token, if we have a good tenant who cooperates well on

conservation measures, we tend to favor that tenant when we get another farm in the area," Furrer said.

In Denver, Colo., farm manager David E. Peterson talks of the long-term damage caused by lack

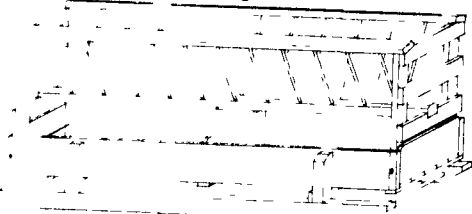
(Turn to Page C4)

5%

extra off 1983 prices

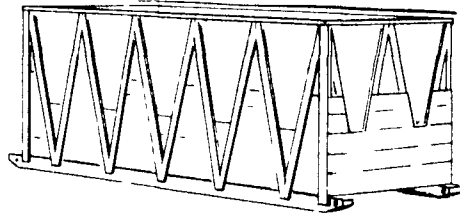
If you say you've seen this ad and place your order before February 1, 1984!

Feeders for every need!



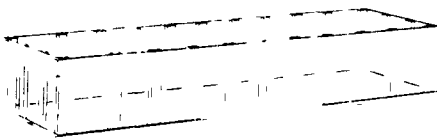
Oak Feeder Trough with or without top Hay Rack

Available any length... on legs, skids, or with a flat bottom.



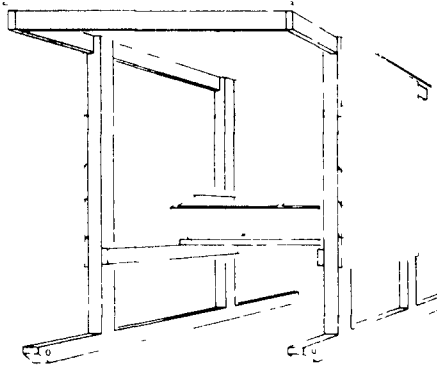
"V"-Neck Hay Feeder

Available 10' to 20' long All treated lumber



"Square-Neck" Hay Feeder

10' to 20' lengths. Treated yellow pine On skids



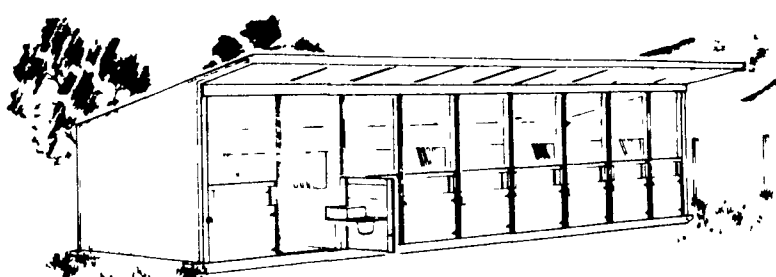
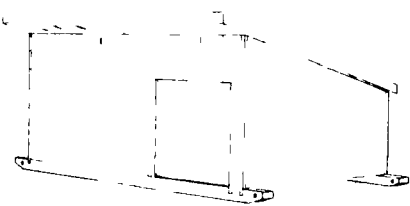
Mineral Feeder

All treated lumber. Has galvanized roof

Be sure to tell us you've seen this ad!

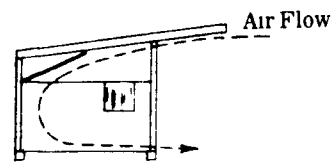
Portable Shelter

8'x16' on ground, 6' high Rough sawn exterior plywood over 2x4 braced frame.

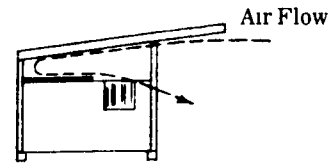


Calf Condo with summer/winter ventilation panels.

Regulate the air flow and keep calves healthier. Fully assembled, on treated skids. 3'x8' stalls have easy access feeders. Rough sawn exterior plywood, galvanized roofing, spouting and paint included.



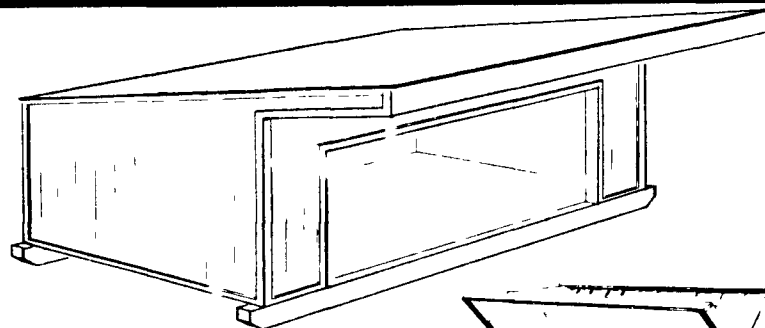
Raised (Warm Weather) Position



Lowered (Cold Weather) Position

Available in 3, 4, 5, 7 and 9 Stalls

For prices and ordering call Dave at (717) 483-6386.



Sheep Shelters and Sheep Feeders

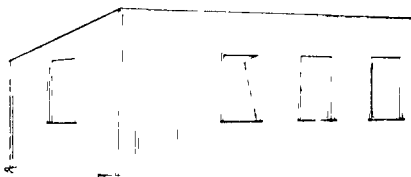
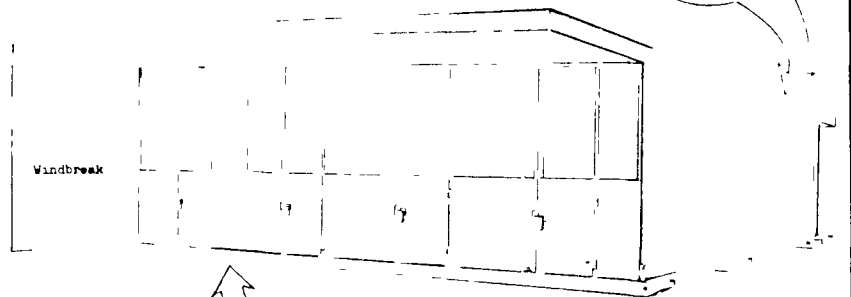
Shelter is constructed of exterior rough sawn siding on treated skids, with paint and galv. steel roofing included

Feeder is constructed entirely of treated yellow pine lumber

Other Agricultural products are also available at 1983 prices.

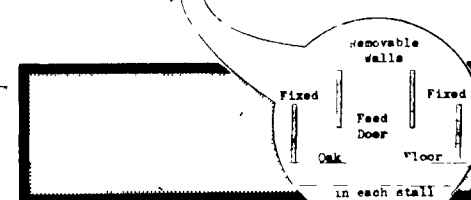
Farrowing House

Features 4 large stalls with removable partitions. Treated skids, 1 3/8" oak floor, rear-opening feed doors



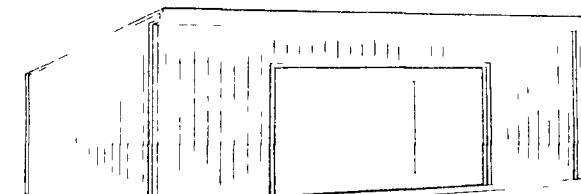
Poultry House and Laying Nests

12'x28' building on treated skids Has galv steel roofing. Laying nests are optional



Cattle Shelter

Available 8' or 12' wide 14', 16', 20', 24', 28' long Rough sawn exterior plywood, treated skids, galv. steel roofing, spouting, painted



We're holding 1983 prices for as long as possible! Call us if you need more information.



Allensville Planing Mill, INC.

108 E. Main St., Allensville, Pa. 17002
Phone: (717) 483-6386