

**TRUCKS & TRAILERS**

**TRUCKS & TRAILERS**

**REAL ESTATE**

**REAL ESTATE**

**REAL ESTATE**

**REAL ESTATE**

**SNYDER COUNTY**

For Sale - 1976 Ford Courier, 4 cyl., 4 spd., AM-FM radio, excellent condition. \$1350. 717-865-3488.

For Sale - 1971 Diamond T tractor, 318, 10 spd., twin screw, wet line and PTO, new paint. \$5,000. 215-255-5145.

For Sale - 1976 Chevy Beauville window van 6 cyl., 3 sp., 36 inch seats. Haul for large family or small group, good condition. \$1350. 717-865-3488.

Eby Bilt gooseneck trailer, 24' of floor space, like new, all aluminum. 301-833-3283.

1981 F250 Trailer special. PS, PB, AC, AM-FM Stereo, \$4,200. Call Jim V.B. 717-656-2511.

For Sale - 1973 GMC 350 auto. power steering & brakes, 9 ft. Omaha stake body with 42" sides 7,000 GVW-Good Condition. No Rust \$1675.00. 717-626-5033.

1978 Ford custom F150 half ton pick-up, 6 cylinder, 3 speed, PSPB, \$2,950 717-733-2873

1982 Datsun King Cab pick-up, 4 cylinder, 5 speed, AM-FM. Excellent condition. \$5,600. 717-733-2873.

1982 GMC 3500, 1 ton cab and chassis, 350 auto PBPS, dual tanks, radial tires, 17,000 miles, \$7,900. 717-733-2873.

'83 Chevy Scottsdale C10 4 WD pick-up, 305 4 speed overdrive PSPB, rally wheels, 11,000 miles. A-1 shape, \$9,000. 717-733-2873.

16' Morgan bed w/42" stake sides, 1,600 lb. Waitco 1' gate, \$1500 or best offer. 215-562-8415.

1979 Chevy 1 ton rollback, 14' Schwartz, 30,000 original miles, 1 owner, mint condition \$10,000/offer. 301-833-9091.

1974 IH CAB OVER 4070A, 13 SPEED TRANSMISSION, 318 DETROIT DIESEL, PS, SLIDING 5th WHEEL, GOOD RADIAL TIRES 215-286-9510

If you're looking for a farm, land or have any other real estate needs, you'll find what you want in the Real Estate classifieds. 717-394-3047 or 717-626-1164.

96 Acre Dairy Farm, Oxford area, good house, bank barn, equipment shed, \$250,000. Hayes Oxford 215-932-3092 - evenings call Jack 717-354-9534.

2 Farms consisting of 120 acres of very fertile land, 2 sets of buildings for sale by the owner, John Strawberry, 301-996-2022.

Farmette, 12.66 shares, for sale by owner. 717-259-9983.

Log cabin located in the mountains of Central Pennsylvania, excellent hunting and fishing available, located 3 miles northwest of Belleville, off Rt. 305 near Greenwood State Park. Two parcels of land included. One tract being of the dimensions of 75' x 101'. The other being 300' x 124'. Water available on property. Bids being accepted immediately. Mail bids and inquiry to Archie D. Stuck, 127 E. Main St., Belleville, PA 17004. Bids must be postmarked no later than Aug. 8, 1983. The owner reserves the right to reject any or all bids.

FRANKLIN COUNTY - dairy and general farms, Kuhns Real Estate, Inc., 717-597-8300. Roger Wildeson R.E.S., 717-263-5702.

Farm for rent - 40 acres, modern house, barn and work houses, Lancaster Co., 6 miles from Ephrata, 215-562-4820.

Farm for sale by owner - 140 tillable acres, 40 acres wooded, good flat Klinsville soil, lots of frontage on hard road, Columbia Co., write to Lancaster Farming, PO Box 366-D94, Lititz, PA 17543.

St. Petersburg Florida house for winter season or by year. Completely furnished 2 bedroom, w/w carpeting, central heat, fruit trees. 215-754-7316.

100 acre Southern NY farm, refurbished house, w/w carpeting, electric heat, wood stove, bank barn, machine shed, out buildings. Picture post-card setting. Valley inside a mountain. \$69,000. 215-754-7316

199 acre farm on Marion Road. Old stone house remodeled, large bank barn, Lancaster silo and other outbuildings, Robert F. Crider, 717-264-8258.

Farm for rent - 70 A northern Lancaster Co., \$625 per month. Call 717-733-3980.

98 acres of level land, large bank barn, 2 houses. \$120,000. 717-392-1177.

Want to rent: With a possible option to buy 50+ or - acre general farm, Carlisle, PA area. 814-698-2400.

For Sale - 188 acre hog or beef farm, some of the best level land in NY state, 40,000' tile, 5 miles from Geneva, Central Finger Lakes, new class 4 house new 54x72 Morton Building, new 20x40 hi-moisture silo, dryer, 30,000 bushel grain storage, 2 set buildings, trailer, trailer site, one barn 166x36 basement, there's more, \$650,000-terms. 315-585-6394.

Wanted - Small slaughter house for dogfood company. Contact Wayne Taylor at 215-692-6476.

NEW YORK STATE Yates County. Attention Horse Lovers! Do you need an indoor lighted arena, 60x120, with 1/4 acre pond, 12.9 acres, paddocks and corrals, a 3 bedroom home? We have it! The horse barn is equipped with 12 oak stalls and a wash stall. Plenty of good fresh water. Raise thoroughbred hunters, quarter horses. More land available. Call on 100A Century 21 Four Seasons, in Yan, 315-536-7456

Wanted to rent - Dairy farm buildings for 30-50 cows, in Lancaster County 717-768-3924.

64 acre farm, delightfully set with 2 ponds and a 2 story farm house in good condition. Country Kitchen, all appliances included, large bank barn with 15 stalls and other additional farm buildings complete the property. Soil ready for farming. A most desirable location and an excellent value. \$230,000. (ML 44166) Call Heritage Real Estate 215-398-3112.

For Sale - 114 acre dairy farm in Nittany Valley. Ready to go. Room for expansion. Buildings in very good condition. Write to Lancaster Farming, P.O. Box 366-D-99, Lititz, PA 17543

For Sale - Productive Troga County dairy farm, 193 acres, 2 barns, 3 silos, large house. 717-724-2174.

For Sale by owner - 157 acre dairy farm Limestone soil. Montour County. Free stall cow and heifer barns, large house with 2 adjoining apartments. Phone after 7 PM 717-437-2888.

Wanted to rent - small dairy facilities for 30 cows or less. House, barn, 5 acres approx needs to be nice, easy access, Cumberland or Franklin Counties, 717-369-2692.

Wanted to rent - Dairy farm in Franklin County for Spring 1984 301-797-6460.

307 acre central Delaware farm. 220 tillable, house and buildings with large shop \$550,000 with 8% assumable mortgage. 302-734-1226.

Dairy Farm - Madison Co. NY - 281 acres, 84 comfort stall, new pipeline and bulk tank, two 20x50 silos, machine and out-buildings, two homes, excellent condition, Call Details 315-662-7708.

New York Dairy Farm - 485 acres, 74 stanchions, 2 houses, 3 silos, 400 tillable, alfalfa and growing wheat. Numerous out-buildings for livestock and machinery. Private 10% mortgage available to qualified parties. Price \$275,000. Contact Willard Pengelly, Managing Broker, Harris Wilcox Inc., Brokers, 716-494-1880.

FREE CATALOG! Describing numerous Pennsylvania farms, camps, acreage tracts, cottages, homes and businesses. Write Dept. Lancaster Farming, WEST REAL ESTATE AGENCY, INC., 5528 William Flynn Highway, Gibsonia, PA 15044.

Susquehanna Co. 110 acres, 70 acres tillable, 10 acres woodland, 66 herd barn, 1977 addition old style 9 room home, 1981 renovation, inground swimming pool, 1 acre farm pond. Scenic setting overlooking village of Dimock, Pa. Rt. 29 frontage. Call 717-278-3235. All \$145,000 or part.

Wanted - Beef, Hog farm in project 70 or near by areas. Call 717-249-6410.

For Sale - 27 acres tillable farm land, Lycoming Co., 717-584-2092 after 4 pm.

For Sale - 20 acre farmette, 2 ponds, 15,000 pullets operation, barn, stone home, 3 bedroom, kitchen, den and recreation room, have fireplaces, 2 car garage, insulated, storm windows, hot water heat, oil wood fired, excellent spring, Lancaster Co., 215-484-2325.

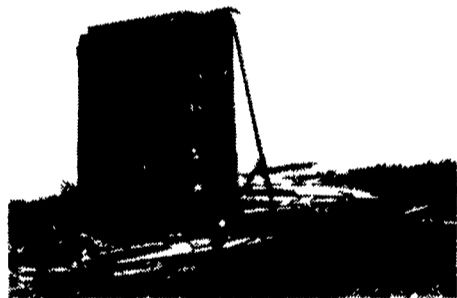
Farmette, 3 acres, 4 bedroom house, barn, other outbuildings. Ideal for horses. Millersville, Lancaster Co. area. Reply Box D-108, P.O. Lancaster Farming, c/o Box 366, Lititz, PA 17543.

**WEST POINT TRAILERS**

West Point, Pa. 215-699-8867



(20) Storage & Roadable Reefers Roll up rear doors and Swing doors - some side doors - Electric & Diesel Refrigeration Units \$3500.00 and up



1970 Great Dane Flat Bed Trailer - 40' long, Tandem Axle, 10x20 Tires, 8' High Head board. Only \$1700.00



(4) Stainless Steel Insulated Storage Tanks, Great for Fertilizers, Heat Tubes, One and Two Compartments, A Steal at \$1200.00 each



1964 Alum. Dump Trailer, 24' Long, 60" Sides, Dual Pistons, Tandem Axle, Coal Chute, Good Floor. Don't Pass This One Up At Only \$2800.00

Give us a call Ask for Paul!

**EAST HANOVER TOWNSHIP PALMYRA**

Frame with 2 1/2 story on approx 179 acres, zoned residential/agricultural, includes formal dining room, country kitchen, 4 bedrooms, full bath and den, extras include underground gasoline tanks, bank barn with 2 bin grainary, 36 stalls, 9 house box stalls, tile silo, concrete milk house, hog pen and poultry house Great farm land with development potential Can be sold as two parcels Possible owner financing, \$495,000

**CHARLES ADLER AND SON, INC. BETTER HOMES AND GARDENS Call 717-533-5800**

**HAPPY NEW YEAR**

- 44 acre beef farm, zoned R1, 33 ta, stream through pasture, very nice 4 bedroom farm house bank barn & corn barn, \$125,000.
- 93 acre beef farm, frame house and 4 car garage.
- 37 acres woodland, w/nice rancher. Call Mr. Baum.
- Nice 50 cow dairy on 137 acres, 100 tillable acres. Stream and pond in pasture. 2 barns, beautiful house.
- 150 acres, 102 tillable acres, 40 woodland, nice level land, ideal for investment, \$1200 per acre.
- 24 acres for hunting cabin in Bloomsburg area.
- 30 acres for hunting cabin, McVeytown area.

**FARM & HOME REAL ESTATE Smoketown, PA 717-291-2270**

Sylvester Baum Carlisle 717-776-3967 Harlan Keener Willow Street 717-464-2669 Mahlon Oberholtzer Lancaster 717-392-1177

Broker J. Irvin Denlinger 717-898-8962

**Top Freestall Complex Will Be Sold Before Spring**

- Modern 80 unit facility built 1970 all steel frame with double fix herring-bone parlor
- Over \$17,000 invested in new super milking system in April 1983 plus new 1500 gal Zero tank
- Harvestores 20x50 Martin Silos, Clay self feeding system with Swartz weigh master
- 52 stall heifer complex with bunk feeding, new in 1975 plus machine shed
- Special setting 242 acres, 160 tillable, excellent soils, 3 ponds
- Super shape 4 bedroom colonial vinyl sided, new kitchen, new heating system
- Great terms offered on their price of \$250,000, \$65,000 down. Balance at 10%
- Over 150 head holstein. Nearly 100 milking and large selection of modern equipment Owner says lets talk price
- You won't find a better free stall package anywhere for the price Don't wait to call if you've been searching for a clean, efficient, modern set-up that's affordable

**Homestead Realty**

Aurriessville Road RD 1 Fultonville NY 12072 518-922-6301

GENTLEMANS FARM Showplace 450 acre NY farm for horses beef & crops Completely restored circa 1832 6 br STONE colonial home in mint condition 3 baths many extras 2 barns 250 acres in hay & corn creek 3 ponds On blacktop Definitely one of a kind -- \$185,000 owner financing Call or write for free catalog UNITED FARM AGENCY INC, 612 RLF West 47th St Kansas City Mo 64112 Ph Toll Free 1 800 821 2599

**PA FARMS BEDFORD COUNTY**

270 ACRE DAIRY FARM, 88 stanchion dairy barn pipeline milkers and barn cleaner Jug milk operation with modern dairy store Purchase with 95 hi grade Holstein milkers and bred heifers machinery and equipment Ideal family operation Complete package priced to sell!

161 ACRE LIVESTOCK FARM, 40 rolling tillable acres 76 acres pasture and balance wooded 2 very good houses bank barn 3 car garage and outbuildings Near Cumberland Maryland \$185,000

120 ACRE GENTLEMANS FARM, 40 acres pasture and balance wooded Spring fed stream runs through pasture ideal for pond 3 year old raised ranch style home and a 2 story home plus a barn and shed Owner will divide!! \$149,000

82 ACRE GENERAL FARM, 30 acres cropland 5 acres well fenced pasture and balance wooded Excellent 2 family dwelling barn implement shed and a small pond Owner could add more tillable acres!! \$139,000

102 ACRE HOBBY FARM 30 acres tillable 18 acres native pasture and balance wooded clean two story house 30x60 barn and fresh water stream runs thru pasture affordable at \$60,000

**CAMBRIA COUNTY**

285 ACRE LIVESTOCK FARM, 120 gently rolling tillable acres 60 acres of good pasture balance wooded Large barn concrete silo machine shop spring fed pond and 2 houses Owner financing \$325,000

**REALTY CENTER**

814-946-0466 Daniel K. Knode, Realtor 1801 Valley View Blvd Altoona, PA 16602