

HAY MARKETS



New Holland Hay

New Holland Sales Stables
Monday, January 2

Report supplied by auction
240 loads. Market steady on all products.

Alfalfa, mostly 125.00-150.00, 6 choice lds. 158.00-192.00, some low quality 1st cutting 100.00-125.00; Mixed Hay 100.00-125.00; few Alfalfa/Timothy mix up to 165.00; Timothy 102.00-140.00; Straw 95.00-110.00, few up to 120.00; Corn Fodder 77.00; Clover 100.00-107.00; Ear Corn 136.00-150.00; Shell Corn 4.00/bu.; Firewood 42.00-58.00 ld.

Kiester's Hay

Middleburg, Pa.

Tuesday, January 3

Report supplied by auction
31 loads.

Alfalfa 97.50-116.00; Mixed hay 57.00-100.00; Timothy 70.00-77.50; Straw 70.00-85.00; Ear corn 110.00; Oats 2.65 bu.; 30 loads firewood 24.00-65.00.

Vintage Hay

Vintage Sales Stables

Thursday, January 5

Report supplied by auction
16 loads.

Alfalfa 118.00-122.50; Alfalfa Mix 95.00-117.50; Timothy 94.00-118.00; Orchard Grass 108.00; Straw 110.00-120.00.

Leinbach's Hay

Shippensburg, Pa.

Tuesday, January 4

Report supplied by auction
53 loads.

Alfalfa 100.00-155.00; Mixed hay 77.50-122.50; Clover 94.00; Timothy 72.00-116.00; Bromegrass 90.00-132.50; Orchard grass 85.00-107.50; Straw 70.00-86.00; Ear Corn 132.50-145.00.

Hagerstown Hay

Martin's Elevator

Wednesday, January 4

Report supplied by auction
33 loads.

Alfalfa 119.00-140.00; Alfalfa grass 130.00-137.00; Clover-Timothy mixed 90.00; Clover 110.00; Timothy 108.00-121.00; Orchard grass 137.00; Mixed grass 109.00-120.00; Mixed Timothy 99.00-115.00; Straw 61.00-62.00; Corn fodder 46.00; Soybean hay 65.00.

Carroll County Hay

Westminster, Maryland

Tuesday, December 27

9 loads.

Alfalfa, 140.00/ton, 2.90/bale; very nice Timothy, 169.00/ton; Mixed Orchard Grass/Timothy, 97.50/ton; Straw, 72.00/ton; Oak lumber, 1x6x8, 10' long, 1.00/board. Next sale: January 10.

Pa. Grain

Tuesday, January 3

Report supplied by PDA

Compared with the market two weeks ago for Southeastern, Central and South Central PA. Corn uneven, mostly steady to 10 cents higher; Wheat steady to 10 cents higher, instances 30 cents higher; Barley & Oats steady to 20 cents higher; Ear Corn steady to fully \$5 higher.

Prices paid delivered to dealers dock - (All prices per bushel, except Ear Corn per ton.)

Southeastern Pa.

Corn No. 2-y range 3.60-3.90, average 3.76, New Crop 2.85-2.91; Wheat No. 2 range 3.55-3.80, few reported 3.98, average 3.73, New Crop 3.30-3.52; Barley No. 3 range 2.60-3.00, average 2.80, New Crop 2.00-2.20; Oats No. 2 range 2.35-2.50, few reported 2.72; average 2.48; Soybeans No. 1 range 7.67-7.97, average 7.80, New Crop 6.70-6.91; Gr. Sorghum #2 range 3.20, average 3.20, New Crop 2.40; Ear Corn range 85.00-100.00, few reported 125.00, average 99.36.

Central Pa.

Corn No. 2-y range 3.60-3.90, average 3.74; Wheat No. 2 range 3.60-3.85, few reported 4.00, average 3.78; Barley No. 3 range 2.40-2.60, few reported 2.85, average 2.59; Oats No. 2 range 2.10-2.50, average 2.34; Soybeans No. 1 range 7.30-7.75, average 7.52; Gr. Sorghum No. 2 range 3.80, average 3.80; Buckwheat range 8.80-9.00, average 8.93; New Ear Corn range 86.00-96.00, few reported 105.00, average 95.27.

South Central Pa.

Corn No. 2-y range 3.60-3.80, few reported 3.95, average 3.75; Wheat No. 2 range 3.25-3.75, mostly 3.50-3.60, average 3.53; Barley No. 3 range 2.50-3.00, few reported 2.25, average 2.69; Oats No. 2 range 1.80-2.30, mostly 1.95-2.00, average 2.00; Ear Corn range 90.00-130.00, average 111.38.

Southeastern, Central & South Central Summary

Corn No. 2-y range 3.60-3.90, average 3.75; Wheat No. 2 range 3.50-3.85, average 3.71; Barley No. 3 range 2.40-3.00, average 2.71; Oats No. 2 range 1.95-2.50, average 2.33; Ear Corn range 85.00-125.00, average 101.07.

Western Pa.

Corn No. 2-y range 3.65-3.85, few reported 3.45, average 3.69; Wheat No. 2 range 3.10-3.30, average 3.18; Barley No. 3 range 2.30, average 2.30; Oats No. 2 range 1.85-2.35, few reported 1.65, average 2.06; Ear Corn range 80.00, average 80.00.

Regional Hay

Friday, December 30

Report supplied by PDA

(All hay No. 2 and better, prices paid by dealers at the farm and per ton.)

Hay & Straw steady.

Alfalfa 105.00-135.00; Mixed hay 85.00-100.00; Timothy hay 80.00-90.00, few 100.00; Straw 60.00-80.00; Mulch 35.00-55.00.

King's Auction

Tuesday, January 5

Report supplied by auction

33 Loads.

Two top lds. Alfalfa 133.00 & 138.00; Alfalfa mostly 110.00-130.00, few dusty lds. in 90's; Mixed Hay 115.00-124.00; Timothy 105.00-120.00, few in 90's; Grass Hay 110.00; Straw 95.00-110.00; Corn Fodder 71.00; Shelled Corn 4.00/bu.; firewood 45.00/ld.

Good's Hay

Leola, Pa.

Wednesday, January 4

Report supplied by auction

222 loads.

Mixed Hay 89.00-139.00; Corn 126.00-136.00; Alfalfa 101.00-155.00; Straw 74.00-105.00; Timothy 91.00-116.00; Clover 97.00-115.00; Soybean Stalks 63.00; Firewood 36.00-45.00/ld.

Green Dragon Hay

Ephrata, Pa.

Friday, December 30

Report supplied by PDA

88 Loads Hay and 40 Loads Straw.

Alfalfa 113.00-166.00; Mixed hay 100.00-111.00, few to 162.00; Timothy hay 111.00-137.00; Stubble hay, one load 92.00; Straw 92.00-136.00, mostly 100.00-122.00; Ear Corn, 8 loads 135.00-145.00; Rye one load 3.75 per bu.; Oats, 3 loads 2.50-3.10 per bu.

Frederick Co. Hay

Buckeystown, Md.

Thursday, January 8

Report supplied by auction

63 loads; market steady to strong.

Alfalfa six good to fancy 151.00-185.00, six fair to good 118.00-131.00; Timothy five fancy 125.00-133.00, eight good 118.00-124.00; two Bromegrass 125.00-127.50; Mixed Hay two fancy 125.00-131.00, six good 100.00-102.50, three fair 79.00-85.00; Straw nine good 72.00-82.00; Corn Silage 29.00 ton; Firewood two split hardwood 81.00-87.50, three mixed wood 65.00-74.00 a cord.

New Holland Horse

New Holland Sales Stables

Monday, January 2

Report supplied by auction

Reported receipts of 237 head of horses, mules, and ponies. Market: steady.

LOCAL

Work horses 750.00-1100.00. Better horses 375.00-575.00. Driving horses 275.00-600.00. Riding horses 250.00-325.00. Lightweight killers 225.00-275.00. Heavyweight killers 300.00-485.00. Mares 30.00-100.00; Colts 10.00-20.00; Geldings 30.00-100.00. Larger ponies 125.00-150.00.

NEW HOLLAND SALES STABLES, INC. - THE ACTION AUCTION

MONDAY

FAT HOGS

EARLY BIRD HOG SALE

For Your Protection Your Hogs Must Be Identified

10:00 AM

HORSES MULES

11:00 AM

HAY
STRAW
GRAIN

1:30 PM
BEEF SALE
CALF, SHEEP,
GOATS

WEDNESDAY

12:00 NOON

DAIRY COWS

HEIFERS, BULLS

NEW HOLLAND SALES STABLES, Inc.

12 Miles East of Lancaster
on Route 23, New Holland, Penna

The Action Auction
717-354-4341

Mgr - Abe Diffenbach - 717-393-4464
Norman Kolb - 717-397-5538

Field Representatives

Alan Diffenbach 717-656-9806

Luke Eberly 215-267-6608 - 738-1865

WEDNESDAY

FEEDER PIG SALE

1:30 P.M.



We endeavor to keep our
barns cleaner than yours.
State graded until 12 Noon

THURSDAY

11:00 AM

BULLS -

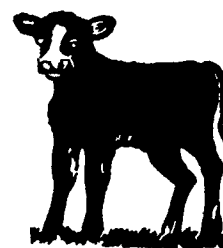


STEERS -
BEEF COWS



3:30 P.M.

CALVES



SHEEP
GOATS



Market your livestock thru New Holland Sales, your neighbor does
Pick-up your check before you leave