

# That's a ewe of a different color

BY TRISH WILLIAMS

GAP — 'Ewe' wouldn't believe the unique Christmas decorations motorists along Newport Pike have been treated to this holiday season, unless you saw it yourself.

The decorations I'm referring to are living ewes of a different color-green, with festive red bows tied around their necks. Still confused?

Well a quick trip down Newport Pike just south of Gap to Spring Run Suffolk Ranch offers an explanation. The decorative green ewes, are actually yew bushes that have been sheared into the shape of their mammalian counterparts.

The concept and the handiwork are the product of Dorothy Mendenhall. Dorothy and her husband,

Kenny, own and operate Spring Run Suffolk Ranch and the Brintwood Motel that adjoins the ranchette.

Named for an ever abundantly flowing spring that originates on the property, Spring Run is a diverse small scale farm. Geese, turkeys and steers are also raised on the property.

"I enjoy working with livestock," said Mendenhall. "I've been around them all my life. I can't get as good a meat in the market as I can grow, either."

Mendenhall's love of livestock farming and pride in his farm, is evident to passers by on Newport Pike, as they enjoy the charming country scenery his labor of love provides.



Ewes of a different color stand on the corner of Spring Run Suffolk Ranch, along Newport Pike just south of Gap. Dorothy Mendenhall came up with the idea to prune these yew bushes into the shape of real ewes about six or seven years ago. Like most ewes, these yews are sheared annually. Each year the conformation of these unique creatures has come closer in resemblance to the real thing.

In the true spirit of the holiday season, Dorothy decorated the ewes with red bows, an attraction enjoyed by many passing motorists.



Mendenhall's flock of registered Suffolks now consists of 12 ewes and one ram. He sells most of the lambs to 4-H members for project animals.



Much thoughtful detail has gone into the planning of Spring Run Suffolk Ranch. The ranchette, located on less than six acres, brings much pride and enjoyment to its owners, Kenny and Dorothy Mendenhall.

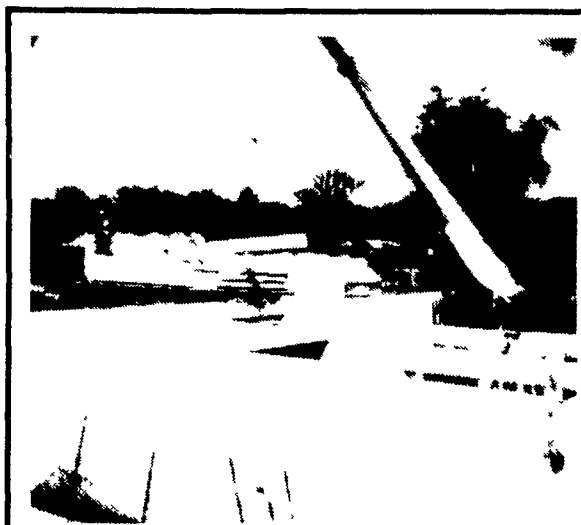
## LOOK MR. FARMER...We're The "Concrete Specialists"

• STONE WALL REPAIRS

• MANURE STORAGE

• SILO REPAIRS

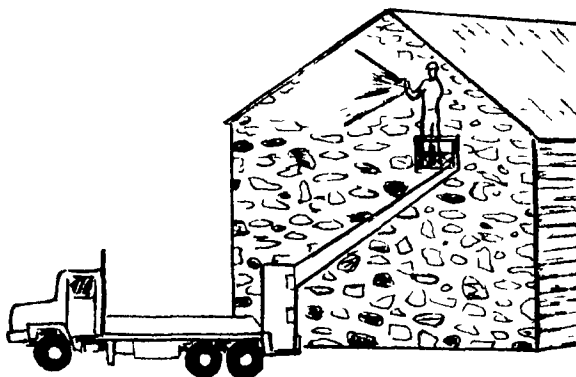
• SLATTED FLOOR SYSTEMS



**PRE-CAST CONCRETE CATTLE SLATS**

Available In:

- 4 Ft. Widths
  - 8, 10 & 12 Ft. Length Sections
- ASCS Approved



**REPAIRING STONE WALLS with SPRAYED ON PRESSURE CONCRETE**



Interior View of Manure Tank Sealed With Pressure Concrete

**PRE-CAST GUNITE LINED LIQUID MANURE TANKS**

- Underground or Above Ground Tanks.
- With Or Without Tops

### MAP-ALLEN CONCRETE PRODUCTS, INC.

  
 Gunite Construction • Precast Concrete Products  
 Bridge Repair • Tank Repair • Holding Tanks • Installation • Pre-Qualified by PennDot  
 R.D. 2, Ephrata, PA 17522 (717) 859-3354  
 Subsidiary of Seal-Crete, Inc.

Have A FREE Cup Of Coffee  
 On Us At The  
**PA FARM SHOW**  
 Space #597 and Outside Display