



Farm Talk

by
Jerry Webb
Delaware Extension

If you're looking for a break in the boredom of a long winter around the farm, check the Pennsylvania Farm Show schedule. It starts tomorrow, and runs through next Friday. As always, the Farm Show is held at Harrisburg, an easy drive for most area farmers.

For the uninitiated I must say the Pennsylvania Farm Show is truly an agricultural exposition. Thousands of exhibits, ranging from the smallest of seed corn displays to multimillion dollar farm implement collections will be there. There'll also be a full line of livestock displayed, including draft horses, dairy and beef cows, sheep and hogs. Each day is loaded with activities such as livestock judging, horse pulling, square dance competition, and livestock auctions. Also, most of the Pennsylvania agricultural organizations hold annual meetings during Farm Show week.

While the Pennsylvania Farm Show is aimed primarily at an agricultural audience, it undoubtedly draws more nonfarm participants. If the weather is favorable, thousands of people crowd into the Farm Show complex each day. School buses and pick-up trucks in every brand, style and color, jam the Farm Show parking lot. Their occupants scatter out to get a firsthand look at their part of agriculture that interests them.

It's hard to compare the Farm Show with anything else. I've never attended an agricultural gathering quite like it. It's more like a Midwestern state fair than anything else except that it's all under roof and there's no carnival. There are livestock shows and machinery displays, and an assortment of educational exhibits along with some grandstand entertainment in the evenings. And there's plenty of good food prepared by a wide range of civic and religious organizations. And aside from a small charge to park your car, the whole thing is free.

Believe me, there are no dull days at the Farm Show. Something is going on all the time and there's more to see than you can cover in the few hours that will probably be available.

Improved roads have made the trip to the Farm Show easier. From Delaware and eastern Maryland take route 283 west from Lancaster where it meets U.S. 30. Stay straight ahead on 283 where it

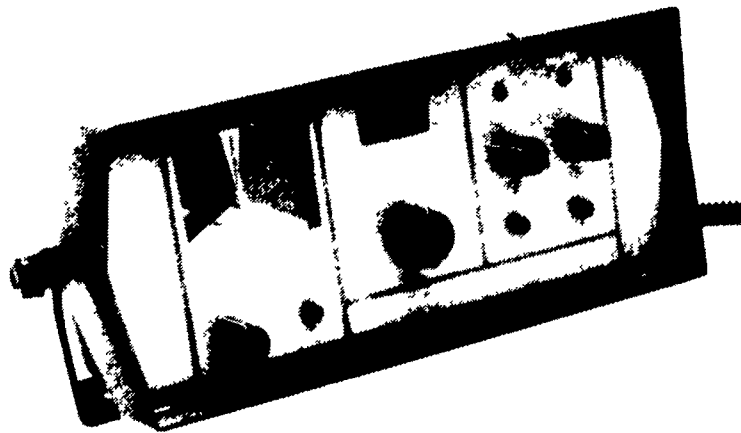
enters the concrete jungle three miles above the turnpike. Avoid signs saying I-83 and Harrisburg. Instead, follow U.S. 322 west toward Lewistown. Three exits farther north the road meets with I-81 south. Signs point for Carlisle. That's your exit. Follow I-81 two miles to exit 23 and Cameron Street East and the Farm Show complex is right there. If you get lost, ask anyone where the Farm Show is and chances are they can tell you.

I'm planning on catching some of the Farm Show on Tuesday 10 and also participating in the annual Master Farmers award luncheon that day which is held nearby. Hope to see you there and remember, although it's a farm show, it's of interest to everyone.

MARYSVILLE, Wash. — A new GL-10 grain loss monitoring system for combines has been introduced by the Ag Division of J&H Incorporated. It fits on all combine makes and models for harvesting corn, wheat, rice, soybeans, oats, barley, sunflowers, rye, milo etc.

Field tests have shown combines equipped with this system increase yields by 2% or more and reduce combining time by 20% or more, according to a company spokesman.

The console, which mounts in the combine cab, has a digital read-out to monitor grain loss from full



4-H Beef Club

The December meeting of the Hunterdon County 4-H Beef Club was held at the home of Anne Vaughan in Flemington, Hunterdon Co., N.J. Leader in attendance was Julie Higgins.

Election of new officers took place. The new officers are: President, Greg Novak; Vice President, Mary Beth Brenner; Secretary, Jody Neuberger; Corresponding Secretary, Ken Panacek; Treasurer, C.G. Higgins; Reporter, Jason Peighard.

There were five new members joining the club. They are Renee Kostak, Jill Kostak, Fritz Neuberger, Jenny Reighard and Jim Scherer.

Harvesting losses are reportedly cut with new grain monitor from Ag Division of J&H Incorporated.

width sensors at both the walker/rotor and the sieve locations. An area based grain loss meter, with a drive shaft sensor, is also included. Deflectors are also provided to direct lost grain to the sensors.

Individual sieve and walker/rotor sensitivity adjustments make it possible to monitor loss of all types of grain on all types of combines. An individual audible/light alarm for

both the sieve and walker/rotor locations can be set on the console to go off if grain loss exceeds the desired limit.

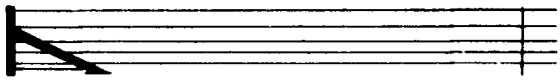
The J&H GL-10 grain loss monitor is available at farm equipment dealers or at specialized agricultural electronic sales and service centers. For more information contact the Ag Division, J&H Incorporated, 6120 31st avenue N.E., Marysville, WA 98270.

KENCOVE "NEW ZEALAND STYLE" HIGH-TENSILE FENCE

Non-Electric OR Electric
Strong • Lasting • Economical



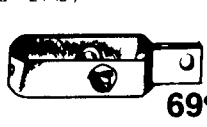
USA WIRE 12 ga Type 3 galv 4000 75.00
10 Coil 4000 wire (same as above) 650.00
2000 of above wire 12 ID coil mail 35.00



NZ WIRE 12 ga Type 3 galv 2160 55 lb 37.50
30 Coil of above 1650 1720 lb 39 x lb .60
NZ WIRE 35 45 lb coils All High Tensile .75
(16 ga 98 lb 14 ga 59 lb 10 ga 24 lb)



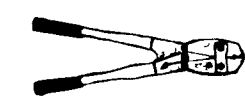
\$2.50



69¢

PERMANENT IN-LINE WIRE STRETCHERS

DONALDS STYLE No 1 MINITITE .69
No 2 Old Standard 2.95
HAYES STYLE (with aluminum log spool) 2.50
HAYES HANDLE required to use above 5.95
SPRINGS galv 225 lb 1 compression 4.00
BRACE PINS galv 4 inch .25
9 inch .50
CRIMPING SLEEVES FW 2 3 1/2 ga (100) 9.99



CRIMPING TOOL Nr o 64 2345 95.00

SPINNING JENNY unwinds high ten wire 36.00

CHAIN-GRAB WIRE STRETCHER smooth grip 24.95

STAPLE DRIVER puts long stapler into extra hard wood safety for eyes & hands 18.50

LD FIBERGLASS T POSTS notched 2 OC \$ ft .32

HD FIBERGLASS T POSTS self insulated \$ ft .60

CLIPS for FIBERGLASS specify HD or LD (100) 3.50

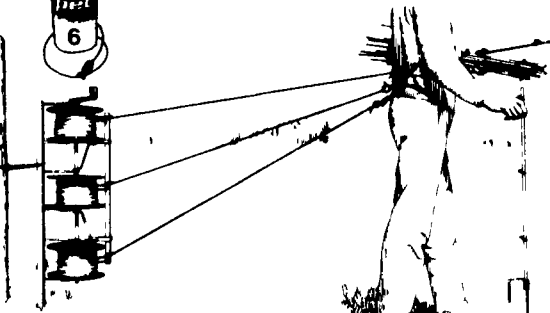
CLIPS for WOOD 1 x1 2x1 or 1 x2 (100) 5.00

INSULATORS

WRAPAROUND INSULATORS easy Ends + (10) 7.90
DOUBLE U INSULATOR for big posts (20) 7.50
4" TUBE INSULATOR for 12 1/2 ga Pel (200) 9.00
DOUBLE NAIL PIN ON INSULATOR Pel 81 (50) 15.00
STAPLE INSULATOR channel lock P82 (100) 18.00
VOLTMETER DIGITAL READOUT Speedrite 69.00
ELECTRIC FENCE WARNING SIGNS plastic .70
SLINKY GATE electric 2 to 20 ft gate 10.00
39 ft INSULTUBE Pel 32 for 12 1/2 ga 6.00
UNDERGROUND CABLE 330 ft 35.00
CUT-OUT SWITCH stainless steel 6.50
ENERGY LIMITER for bottom wires etc 9.90
PEL PE6 PORTABLE FENCER lantern batt 65.00
PEL PE12 BATTERY FENCER 12 volt wet 156.00
PEL 100 POWER FENCER 110 volt 280.00
Powers miles of heavily weeded fence
LIGHTNING ARRESTOR Twin Tower kit 3.50



6



HOT TWINE 6 Stainless wires Double Life

For portable fencing 660 ft 11.90

1650 ft 29.75

HOT TAPE 5 wire Visible 660 ft 25.00

ELECTRONET with Posts 33 x150 ft 72.00

PEL REEL use w HOT TWINE portable 23.00

PEL TRIPLE REEL rewind 3 Twine at once 96.00

FIBERGLASS 1/2" ROD POSTS Portable \$ ft .32

Attachment for above spring grip wire .10

SEE US AT THE PA FARM SHOW



FREE DELIVERY! Up to 10% of prepaid orders applied to shipping VISA MASTFR CARD and UPS COD only 5% allowed for shipping Other payments after goods leave Blairsville = all freight extra Shipping im mediately normally UPS FAST DELIVERY

RD 1 Box 111 Blairsville, PA 15717

Phones:
412-459-8991
PA: 800-442-6823
Other States:
800-245-6902
Your Direct Route To
High-Tensile Fence Supplies

SEARCHING
FOR A
GOOD
BUY?
YOU'LL
FIND IT
IN
CLASSIFIEDS

