

New nozzle is reported

ARLINGTON HEIGHTS, Ill. - A new agitation nozzle to be used with the over-the-top agitation kit available as an option with the Slurrystore system for liquid manure has been announced by A.O. Smith Harvestore Products, Inc.

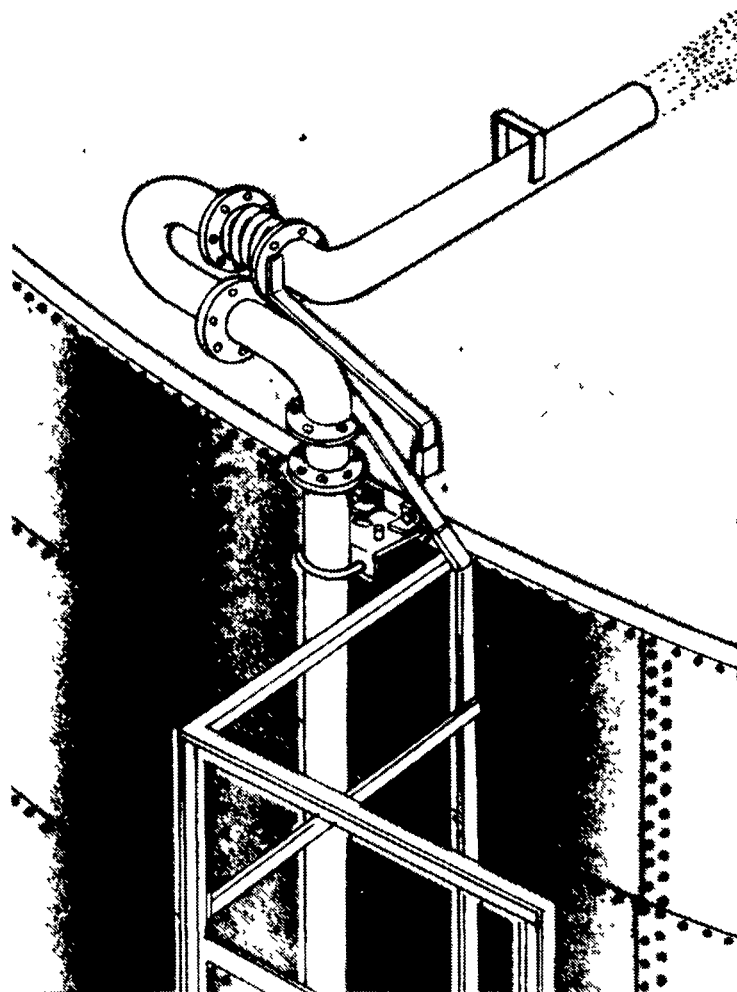
According to the manufacturer, the new nozzle is designed to

provide complete and thorough surface agitation of liquid manure in the above grade slurry tank.

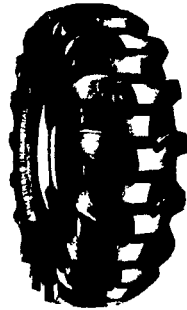
Two swivel joints provide side-to-side and up-and-down adjustment flexibility, allowing the operator to aim the discharge to virtually any point within the Slurrystore structure, and to follow solid chunks as they move

around the structure. The straightening vanes and reduced diameter of the 4½ in. discharge nozzle provide an intense, powerful stream, capable of hitting the far wall of smaller diameter structures.

The nozzle's specially designed assembly counterbalances fluid forces, making it easier to control. It is easy to adjust, even while the slurry pump is running at high capacity.



The new agitation nozzle by A.O. Smith Harvestore can be used with the over-the-top agitation kit.

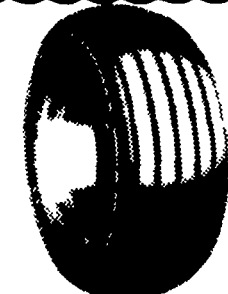


BACKHOE TIRES

- 14.9x24, 8 ply \$215.00
- 16.9x24, 8 ply \$230.00
- 17.5Lx24, 8 ply \$240.00
- 16.9x28, 8 ply \$260.00
- 18.4x28, 10 ply \$350.00

BACKHOE TIRES

10% OFF
DURING
FARM SHOW
WEEK!



WAGON TIRES

- 9.5Lx15 8 Ply \$44.00
- 11Lx15 8 Ply \$47.00

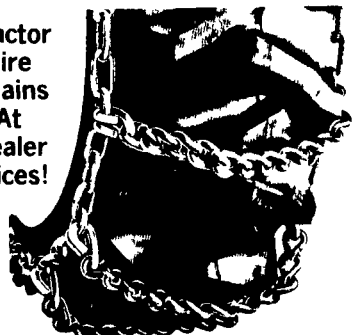
LOADER TIRES

• We Ship UPS

- 700-15, 6 ply \$65.00
- 750-15, 6 ply \$68.00
- 10-16.5, 6 ply ... \$80.00
- 12-16.5, 6 ply.. \$115.00



Tractor
Tire
Chains
At
Dealer
Prices!



Call Us For Price Quote!



TRACTOR TIRES

ARMSTRONG
WE GO THE EXTRA MILE

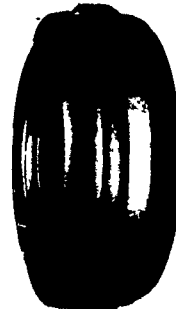
MUST SELL FOR CASH

- 9.5x24, 4 ply \$82.00
- 11.2x24, 4 ply \$95.00
- 11.2x28, 4 ply \$113.00
- 11.2x38 \$140.00
- 11.2x36 \$135.00
- 12.4x24 \$120.00
- 12.4x28, 4 ply ... \$125.00
- 12.4x38 \$165.00
- 13.6x28, 6 ply ... \$155.00
- 13.6x38, 6 ply ... \$191.15
- 13.9x36, 6 ply ... \$185.00
- 14.9x26, 6 ply ... \$170.00
- 14.9x28, 4 ply ... \$158.00
- 14.9x38, 6 ply ... \$224.00
- 15.5x38, 6 ply ... \$220.72
- 16.9x34, 6 ply ... \$250.00
- 16.9x38, 6 ply ... \$275.00
- 18.4x38, 8 ply ... \$364.12
- 20.8x38, 8 ply ... \$495.00
- 20.8x34, 6 ply ... \$450.00
- 18.4x34, 6 ply ... \$289.00
- 18.4x34 8 ply ... \$325.00
- 16.9x30, 6 ply ... \$224.00
- 18.4x30, 6 ply ... \$262.00
- 14.9x28, 6 ply ... \$173.00
- 13.6x28, 4 ply ... \$140.00
- 16.9x28, 6 ply ... \$220.00
- 24.5x32, 10 ply ... \$700.00
- 23.1x34, 8 ply ... \$660.00

Call For Special Price On Service During January
Ask For Spring Dating!

* Above tires are original equipment type, Federal Tax is included in above price.

IF YOUR SIZE IS NOT LISTED
CALL US FOR SPECIAL PRICE!



FRONTS

WE SHIP
UPS

- 400-12 \$22.00
- 400-15 \$24.00
- 500-15 \$31.00
- 550-16, 4 ply \$33.00
- 550-16, 6 ply \$36.00
- 600-16, 4 ply \$37.00
- 600-16, 6 ply \$41.00
- 650-16, 6 ply \$42.00
- 75L-15, 6 ply \$50.00
- 750-16, 6 ply \$50.00
- 750-16, 8 ply \$54.00
- 750-18, 6 ply \$64.00
- 9.5L-15, 6 ply \$55.00
- 9.5L-15, 8 ply \$60.00
- 1000-16, 6 ply \$80.00
- 11Lx15, 8 ply \$75.00
- 1100-16, 8 ply \$110.00
- 14L-16.1, 8 ply \$160.00

* We Install Within 100
Miles Of Lancaster
& Harrisburg

Monthly
Deliveries
Available in NJ!

Delivery & Installation Each Week In:
• Sunbury • Williamsport • Lewistown
• Center Hall • State College
• Reading • Allentown • Pottstown

MUMMAU'S TIRE

Mt. Joy, Pa. 717-653-1260
PA. TOLL FREE — 1-800-222-1729

Upper Susquehanna DHIA

(Continued from Page F30)

Mervin B Nissley	6 3	305	20 268	3 6	725
71					
Melvin K Stoltzfus	7 4	305	23 766	3 2	772
Mina					
Aaron R Zimmerman	7 3	254	15 602	4 5	708
Vera					
Chris S Stoltzfus	9 0	305	21 627	3 2	701
Susan	6 10	305	25 574	3 7	912
Molly					
Maple Lane Farm	5 3	290	22 108	3 9	862
6					
Jonas R Zeiset	6 3	278	19 592	3 9	762
Kate	2 6	302	21,801	3 6	785
Beckie					
Mark A Mapes	3 6	305	19 116	3 9	751
22					
Jacob S Stoltzfus	5 4	305	23 045	3 5	817
Janet					
Mountain View Farm	4 7	305	22 011	3 8	828
217					



INTERNATIONAL® AGRICULTURAL EQUIPMENT

5088 - 136.1 PTO hp*



WHITE
TAG
SPECIALS
listed below

Prices Slashed For Year End Clearance
On New Equipment

5088D Tractor
3288D Tractor
1190 Mower

800 ~~500~~er
435-T Baler

720 Plow
370 Disk
Call for Prices

MANOR EQUIPMENT, INC.

Wheatfield Road R.D. 8, Sinking Spring, Pa.

DIRECTIONS:

2 Miles South of Shillington, ½ Mile Off Route 222
PHONE: 678-0828