

New line of rotary hog feeders has been introduced by Farmcraft Agri-Systems.

Rotary hog feeders debut

DELPHI, Ind. — A new line of rotary hog feeders featuring an extra-heavy electro-welded grill, fused-on tough glass-coated feeder trough and rust and corrosion-resistant stainless steel drum has just been introduced by its manufacturer, Farmcraft Agri-Systems division of Underhill Industries, Inc., P.O. Box 256, Delphi, Ind. 46923. These new feeders are warranted to give up to 10 years of service and are offered in three and six bushel capacity models.

Wear and abrasion caused by rough and wet hog snouts, as well as rust and corrosion are minimized by a thick, super-hard and smooth glass coating all over the troughs, inside and out. The super-glossy surface discourages

bacteria formations and promotes good animal health, and is easier to clean and disinfect.

The grills are made of 1/4"x1" steel or stainless steel straps and are welded throughout. These grills may be purchased alone as replacements on older model Farmcraft rotary feeders.

Another feature is a new and improved top-operated crank-type adjustment control that "fine tunes the amount of feed flow to the trough. It can be changed, as desired, to match the weight and girth of the animals in the pen. Sizable savings on feed result.

Purchasers make an extra saving because the feeder is shipped in sections which may be assembled easily with simple tools.

Henke acquires Kools

COLUMBUS, Neb. — Henke Machine, Inc. recently has acquired the Kools Brothers, Inc. line of forage blowers, announced Wayne Davy, president.

"The addition of Kools forage blowers complements the multiple product lines Henke now manufactures," said Davy. "These are roller mills, feeder mixers, square bins, and grain handling equipment including conveyors, cleaners and

screeners. Actually, the blowers on our roller mills are essentially Kools blowers with some Henke parts.

During the past 40 plus years, we've acquired a solid reputation and dealer network throughout major dairy, cattle and hog producing areas. We expect this line of forage blowers to enhance and further strengthen our position in the industry," said Davy.



GIGANTIC SELECTION
IN
Lancaster Farming's CLASSIFIEDS

Hesston introduces mower, rake

HESSTON, Ks. — Hesston Corporation has introduced the new Model 1030 Rotary Disc Mower, 1035 Conditioner attachment and the Model 3700 Tedder-Rake.

The 1030 Rotary Mower can be used either as a mower, or with the addition of the 1035 conditioner attachment, as a mower-conditioner. It features two drums and three discs, each with two cutting knives, for total cutting width of 90 inches. Drums and discs are driven with a PTO driveshaft through the top of the frame for plug-free cutting.

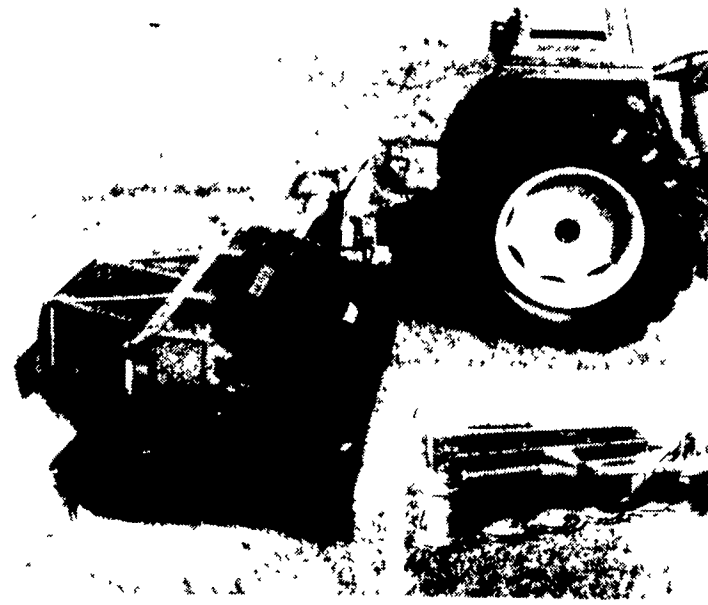
According to Hesston Product Sales Manager, Dexter Schaible, "The 1030 Rotary Disc Mower offers high capacity cutting in the toughest hay or grass conditions. Adjustable lower pins permit easy off-setting of the mower up to five inches, so tractors with wide tire spacings won't run over uncut hay. The 1030's folding design provides a transport width of 90 inches for easy roading."

The optional 1035 Conditioner attachment is powered by a separate PTO shaft running from the transverse-mounted gearbox on the rear of the machine. "This attachment offers adjustability for varying crop conditions," says Schaible. "One roller is equipped with rubber vanes that mesh with a metal counter roller. This design ensures thorough conditioning across the full width of the machine."

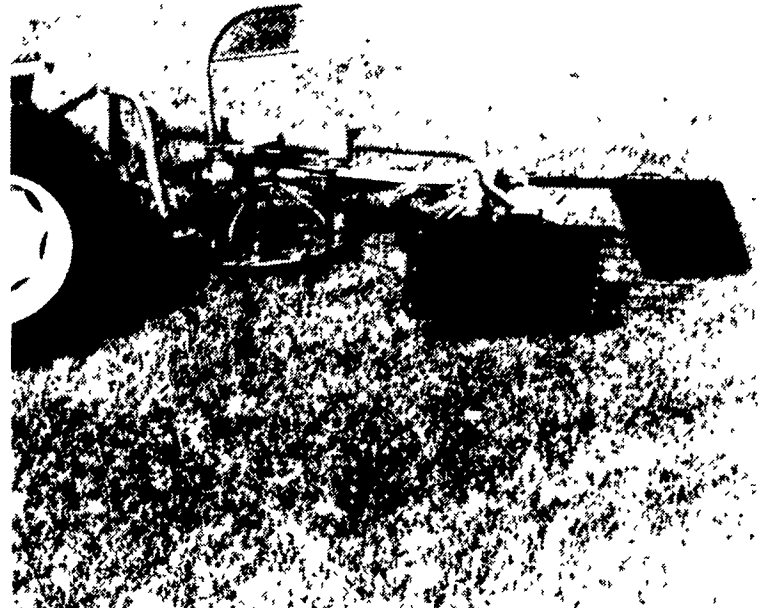
According to Schaible, everything is adjustable on Hesston's new Model 3700 Tedder-Rake, including tines, swath deflector, basket position and basket rotation. The two PTO-driven baskets are independently driven and adjustable to match conditions or contour. Basket raking speed is variable down to 180 rpm without sacrificing raking speed or capacity.

"The horizontal, spring-loaded double tines gently feather the crop sideways, automatically lift for transport, and instantly pivot up when striking an obstruction," said Schaible.

"When windrowing, the crop is moved sideways, so the Tedder-Rake is ideal for raking near fences, ditches or in windy con-



New rotary disc mower from Hesston features a conditioner attachment.



Tedder-rake introduction from Hesston provides total adjusting capability.

ditions. Forming shields offer easy adjustment to control windrow width.

"When tedding, the rotary drives counter rotate to pass the crop between the baskets and spread it

out at the rear of the machine," Schaible said.

Schaible noted that, "very few products have the adaptability and dependability of these new Hesston machines."

New baler unveiled

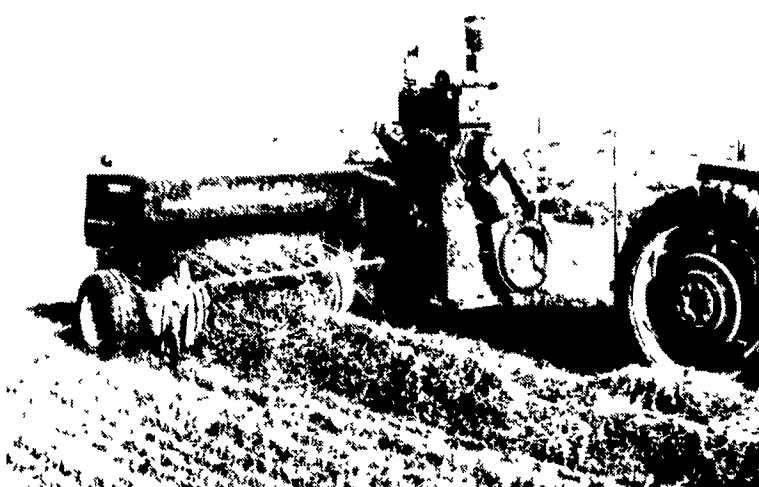
NEW HOLLAND — The new Model 505 baler is for commercial hay producers, says Doug Gammie of Sperry New Holland. It's designed for the irrigated alfalfa country where it's easy to cure hay very dry for no-mold, high-density baling. Automatic bale wagon handling for the 150 pound bales is assumed. Bale cross section is 16x23 inches.

Engine drive versions are supplied with either a 50HP diesel or a 56HP gas engine. PTO units are equipped with a 90HP drive line so larger tractors can be used.

The new baler is different from earlier models in both knotter and feeder design, according to Gammie who is product manager for balers at New Holland.

The feeder is a new extra-duty Flow-Action that replaces the Channel Flow of the "500". This is a very durably built unit. The tine bar is steel, not aluminum. It has a solid connection to the drive chain (without springs). It's driven from one end and has fewer parts than the design it replaces. The more accurate feeding results in the largest baling capacity of any machine in its class, along with better bale shape. Bale corners are square and dense. This improves bale handling characteristics when the hay is shipped.

The improved knotter life is a benefit of a change to hardened steel bill hook rollers (from brass). The bill hook cam on the knotter frame is hardened steel (replacing



A new, heavy-duty 3-tie baler from Sperry New Holland is available in twine or wire-tie versions.

cast) and replaceable. Hardened spacer washers have been added between the bill hook pinion and knotter frame.

Beachley-Hardy opens in N.Y.

CAMP HILL, Pa. — Beachley-Hardy Seed Company, headquartered in Camp Hill, Pa. has announced the acquisition of warehouse facilities in Waterloo, N.Y.

Frank Welch, the seed company's marketing director, said that the new facilities at 538 Waterloo-Geneva Road will carry the company's full line of products. These include Hardy Brand corns, W-L alfalfa varieties, and Beachley-Hardy's full line of seeds

for storage, soybeans, winter and spring grains, grasses for forage, turf grass and lawn seeds.

Keith Culver, of Auburn N.Y., will serve as warehouse manager. Culver earned his Associate Degree in Agricultural Engineering from Morrisville Agriculture and Technical College. Most recently he was employed by Agway Seed Division, in Buffalo, New York. Culver said that the new operation began servicing customers on Jan 1