

# Legacy of J.D. lives on in York County

BY JOYCE BUYP  
Staff Correspondent

YORK — Few people who were

in the crowd watching the auctioning of the 1983 Farm Show champion steers are likely to

forget that experience. In the center of the arena, 18-year-old Annette Walter, tears

streaming down her face, led her purple-banner-blanketed Angus-Chianina champion, "J.D."

Around the arena, a cheering audience applauded the widely-grinning York insurance executive and country-boy-made-good, Art Glatfelter, who had attended the auction on impulse, after a casual invitation by county agent Tony Dobrosky.

Glatfelter had just paid a record-setting \$12 per pound for the 1255-pound champ.

"No one remembers a second-place bidder," Gladfelter had quipped afterward, explaining his \$15,060 impulse buy.

But after mulling over his four-legged acquisition during the following weekend, the breeder of Paso Fino horses on his own eastern York County farm called up the county agent and said he wanted to give the steer back to the youth of York County.

After hasty consultation with key county youth leaders, a fund-raising raffle plan emerged. Glatfelter would sponsor the fund-raising by printing 40,000 tickets, at his own expense.

Five top prizes in the raffle were to be packages of the champion's steaks, roasts and hamburger. Five additional winners would get steak dinners for two at the Accomac Inn on the Susquehanna, widely acclaimed for its cuisine.

Members of both the 4-H and FFA organizations sold the tickets, at one dollar each, marking on each ticket which particular club judging or team or chapter's treasury should be credited for the ticket sale amount. Twenty cents of each 4-H ticket sold went to the county's 4-H Center fund.

A York Chamber of Commerce sidewalk press conference, ap-

*It all began with this joyous moment*



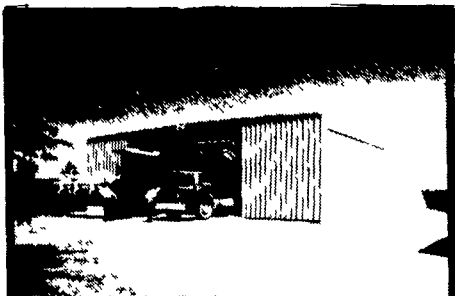
This was the scene just after a record \$12.00 a pound was paid for the 1983 grand champion Farm Show steer. Standing behind "J.D.", from the left, are Penrose Hallowell, state

ag secretary; Lt. Gov. Scranton; Art Glatfelter, buyer; and Annette Walter.

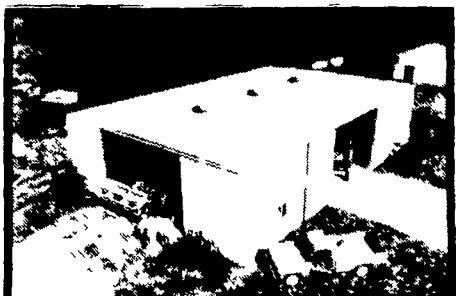


**BUILDINGS for FARM**

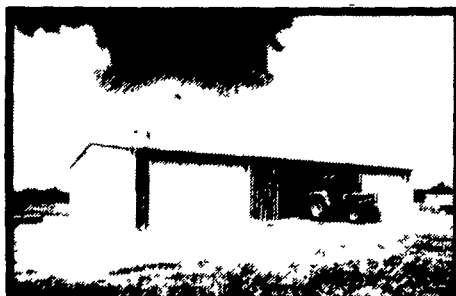
**SEE US AT THE PA**  
Space #275-27 Ma



FARMSTEAD I



FARMSTEAD II



AG MASTER 2:12



**FREE  
CAP  
AND  
JACKET\***

\* Participating Agri-Builders Only



SHOP-STORAGE-GARAGE

**TO QUALIFY  
CAP & JAC  
YOUR AGRI-BUILDING**

- \* Show You A Butler
- \* Take You On A Butler
- \* Make A Bonafide Proposal

(Be sure to ask your Agri-Builder for a Discount From Butler)

**BUTLER MFG. CO.**  
Attn P E Hess  
P O Box 337, Oxford, PA 19363



Dealer Inquiries Available in Pennsylvania Counties Berks Schuylkill Armstrong Indiana Erie Crawford Warren Elk Cameron McKean Clinton Lycoming Sullivan Wyoming Luzerne Columbia Bradford Susquehanna Adams Cumberland York New Jersey Counties Sussex Morris Passaic Atlantic Cape May Monmouth Middlesex Somerset Maryland Counties Talbot Dorchester New York Counties Orleans Genesee Monroe Livingston Allegany Steuben Yates Seneca Cayuga Tompkins Schuyler Tioga Chemung Broome Chenango Madison Lewis Oneida Herkimer Fulton Montgomery Otsego Delaware Schohaire Sullivan Orange Ulster Greene Chautauqua Cattaraugus

No Dealers Fees

Name \_\_\_\_\_

Address \_\_\_\_\_

County \_\_\_\_\_ Zip \_\_\_\_\_

City \_\_\_\_\_ State \_\_\_\_\_

Phone \_\_\_\_\_

(Include area code) LF

**BUY OR LEASE**

**Bethlehem 20 YEAR WARRANTY**

**NAZARETH BUILDING SYSTEMS, INC.**  
P O Box 47  
Nazareth, PA 18064  
PH 215-759-1331

**W.R. MOODY, CONTRACTOR**  
113 Walnut Lane  
West Newton, PA 15089  
PH 412-872-6804

**FOUR COUNTIES CONTRACTOR**  
R D , Box 249  
Coalport, PA 16627  
PH 814-672-5751

**GOMPFF CONSTRUCTION CO. INC.**  
1841 Jerry's Road  
Street, MD 21154  
PH 301-692-5350

**O. A. NEWTON & SON CO.**  
Bridgeville, DE 19933  
PH. 302-337-8211

**D. E. SMITH, INC.**  
Mifflintown, PA 17059  
PH 717-436-2151

**MATTSON ENTERPRISES**  
1605 Mt Holly Road  
Burlington, NJ 08016  
PH 609-386-1603

**TRI-STATE WA DIST. INC.**  
Route 156  
Deale, MD 20728  
PH 301 867-14

**M.W. HOOK CONSTRUCTION**  
R.D #2, Box 16  
Peach Bottom, PA 1  
PH 717 548-26

**NEW FROM**  
**Full Line Of Insulation**  
See Your Butler Agri-Builder for