

WESTFALIA HIGH TECH DAIRYING®

CODATRON

Individualized computer feeding system

To be successful in dairying today, you know how important it is to be in complete control of your feeding program and to have all the information possible on each and every cow. That's why Westfalia has developed the Codatron in individualized computer feeding system.

With Codatron, milk production and profits can be maximized while minimizing health problems, thanks to an early warning system. And unlike many other units, Codatron is an expandable system that won't become obsolete.

The feeding system is quality built and basically foolproof and automatic. You'll have dairy reports of herd conditions and performance. Ration adjustments can be made quickly and easily. You'll be alerted to problem cows fast.

The Codatron is available in two basic models. The F 26 with feeding capabilities to 999 cows, up to 26 feeders, double ration capability with daily consumption reports. The Model L offers feeding plus breeding management capabilities.

And that's not all. Westfalia's Codatron is designed for expansion into parlor data milk functions and home computer interfacing. Watch for new breakthroughs to be introduced soon!

Contact your Westfalia Sales Center today. Find out why Westfalia is truly the leader in high tech dairy equipment.

For the name and location of your nearest Sales Center, call or write



VISOTRON

High Tech control for stanchion barn operations

High tech control is now available for stanchion barn operations with the Westfalia Visotron. Every cow has different milking tendencies and Westfalia's Visotron will help you get all the milk from every cow.

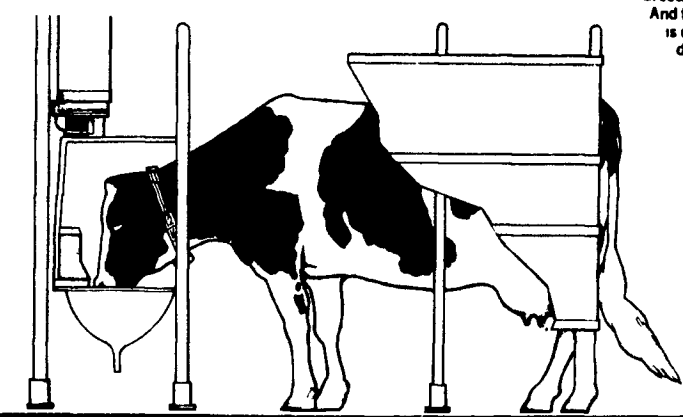
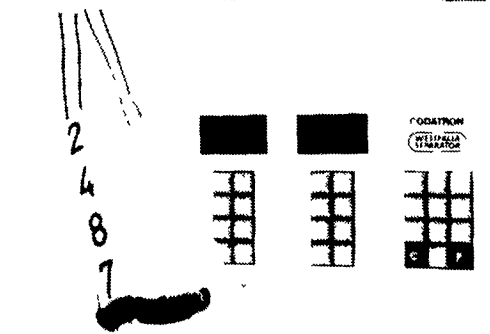
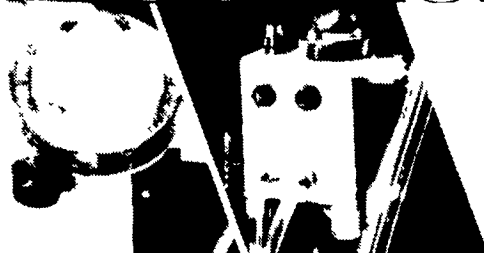
With the Visotron, you can monitor milk flow control pulsation and even regulate vacuum on an individualized basis for each cow.

Visotron saves time and money. Each cow gets the individual attention she needs to give all her milk comfortably without the need for manual supervision. The result: increased production and profit.

The Visotron is portable and easy to install. It's the kind of addition to your dairy that will pay for itself in a very short time.

Contact your Westfalia Sales Center today. Find out why Westfalia is truly the leader in high tech dairy equipment.

For the name and location of your nearest Sales Center, call or write



ACR

Westfalia's automatic take-off should be standard equipment in your milking facility

It's no wonder Westfalia's Take Off has become so popular among dairymen. They save time. They save money. And they improve the efficiency of the operation up to 50%!

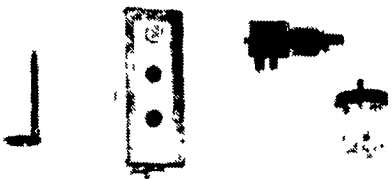
Faultless automatic operation best describes the ACR. The operator needs only to prepare the udder, switch on the unit and attach the cluster. The rest is automatic.

The Westfalia ACR can be pre set to sense flow rate and strip-time with state-of-the-art solid-state sensing for totally accurate milk flow control.

Westfalia's ACR installs easily in any dairy and works well with any brand of pipeline milker. ACR's can be tailored to parlors, weigh jar systems or flat/stanchion type milking barns.

Contact your Westfalia Sales Center today. Find out why Westfalia is truly the leader in high tech dairy equipment.

For the name and location of your nearest Center, call or write



Visit Our Display At The PA FARM SHOW DAIRY BARN

Spaces 1-3, North End, At The Entrance To The Hog Barn

We'll Be Introducing.

THE NEW WESTFALIA MEGA 45 STAINLESS STEEL HERRINGBONE PARLOR STALLS

And

WESTFALIA INDIVIDUAL BACKFLUSH

Westfalia Sales Centers

CHAMBERSBURG

Cumberland Farm & Dairy Supply, Inc.
Larry Hughes
Gary Walton, Sales Mgr.
717 263 0826

COCHRANVILLE

Farm Construction & Equipment
Robert L. Janney
215-593 2365

JERSEY SHORE

Tom L. Dunlap
717 398-1391

LINDEN

William's Farm Supplies
(Sales Area Centre Columbia & Montour Co.)
Dave Williams
717 398-2692

LITITZ

Fisher & Thompson Assoc.
Ames Fisher
Rick Thompson
717 627 1530

McALLISTERVILLE

Saner Farm Systems
Orlyn Saner
717-463 2606

MIFFLINBURG

Wehr's Dairy Equipment
Mark Wehr
717 966-1396

MT BETHEL

K C Dairy Service
Kevin Correll
717 897 5141

NEW WILMINGTON

Chuck Meese, Inc.
412 533 3077

SPARTANSBURG

Brenner Dairy Equipment
Albert Brenner
814-654-7309

TROY

Dairyload Sales & Service
Nan Kelley
717 297 4128

WILLIAMSBURG

Langenecker Implement
Dale Langenecker
814-793 3732

SYKESVILLE, MD

Dairymen Inc.
Mid-Atlantic Division
William Stauffer
301 795-2727
301 781 7020

SPECIAL WESTFALIA DEALERS FOR THE AMISH DAIRYMAN

BELLEVILLE

Byler's Diesel & Refrig. Service
Daniel Byler
717 483 6446
Answering Service

PARADISE

Lloyd Ranck
717 687 6361

REBERSBURG

Tim's Diesel Service
Tim Stoltzfus
814 349-5110
Answering Service

KIRKWOOD

Elam S. Stoltzfus
717 529-2623
717 529-2668
Answering Service

NE REG MGR

NY, PA, NJ, CT
MA, VT, RI, ME, NH
ROBERT E. TURNER
R D #1, Box 11
Aspers, PA 17304
717-677-9301

SALES ENGINEERS

NORTHWEST PA & NY
TOM MOORE
28 Petrolia St.
Bradford, PA 16702
814-362-3933

MD, DE & VA
DAVE PATTERSON
P O 246
Upperville, VA 22176
703-592 3845

NATIONAL HEADQUARTERS

WESTFALIA SYSTEMS
DIVISION OF CENTRICO
1862 Brummel Dr
Elk Grove, Ill 60007
1-800-323-6723
312-437 8660