



**GOOD USED EQUIPMENT**

**TRACTORS**

MF 165 Diesel  
MF 265, 8 sp.  
MF 175, MP  
MF 285, 8 Sp.  
MF 1080  
MF 1130  
MF 1105, MP  
MF 2705 cab, 700 hrs.  
MF 1150 w/cab  
Farmall 400 gas  
Farmall 966  
Oliver 1850 gas

**PLOWS**

MF 880, 6F-16"  
JD 3F-14" Trail  
Oliver 4F-16" 3 Pt.

**LOADERS**

Gehl HL 3510  
Gehl HL 2600  
Gehl HL 4400 Diesel  
Gehl HL 4600  
Sauder to fit JD 2010

**TILLAGE**

Brillion 12'  
Pulmulcher  
Brillion 10' Chisel  
Plow  
Glencoe 7 Shank Soil  
Saver

**COMBINE**

MF 300, cab  
MF 35, SP  
MF 540, 13'  
MF 510

**NEW EQUIPMENT**

Hesston 6650 12' Field Queen 7650  
MF 550 hydro. Gehl 1400 Baler

**Longenecker's, Inc.**

At Clappertown Williamsburg, PA  
814-793-3731

**GRINDER MIXERS**

Gehl 115  
Allied 265

**SPREADERS**

Gehl 250  
Martin 1263  
Scavenger  
MF 130  
NI 244, hyd. gate

**BACK HOES**

MF 203  
MF 30  
MF 20C w/Cab

**HAY BALERS**

NH 273  
MF 12 w/thrower  
JD 14T  
Hesston 5600

**MOWER**

**CONDITIONERS**

Ford 501, 3 Pt.  
Mower

Hesston SP320

Hesston 6450

Hesston 1090

Hesston PT10

NH 461

NH 469

JD 1209

NI 299, used 2 yrs.

**FORAGE**

**HARVESTERS**

Gehl CB400

(2) Gehl CB600

Fox 2000

Hesston 2000

JD 35

**INDUSTRIAL EQUIPMENT**

Ford tractor loader 340, 3400, 4000, Ford TLB 4500, 445 w/extendahoe, 555, Ford 3610 w/cab and Lincoln welder, Ford 600 forklift, 4000 forklift, Ford skid loader 340, CL20, CL40, CL45, General roller 1 1/2 ton, rollapack roller, Ingersoll Rand air compressor, Ford backhoe 15', Ford 757 backhoe, Sky Witch lift, homemade trailer, JD 6 ton trailer, General 9 ton trailer, MGS trailer

**FARM TRACTORS**

Kubota 345 4 wheel drive w/loader, JD 4510 w/loader (has 4020 engine) w/100 hours w/246A loader, JD 2510, JD A, Case 300, VAC, Satoh 25 HP, Farmall H, Super H, 140 w/blade, Cub lowboy w/blade, Cub 154, Ford 9600 w/cab, 5000, 4000, 3000, 2000, 800, Jubilee, 8N, 9N, Ford 7710, 5610 4 wheel drive, 5600, 4600 w/cab, 1900, 1700, 1310, 1200 w/loader.

**CARS & TRUCKS**

Chevrolet camper w/canopy, sleeps six, refrigerator, gas stove and gas heater, Louisville 9000 1974 290 Cummins engine, 10 speed Road Ranger transmission; Truck tractor Louisville 8000 1974 3206 Cat engine, paint good; Ford dump truck F600 tires good, Ford 1/2 ton, Chevrolet pickup w/service body.

**MISCELLANEOUS**

Walk behind snowblowers, Hanson 3 pt. 4' snowblower, McKee 4' front mounted snowblower, Ford snowblower, IH snowblower, Wheel horse snowblower, blades for Wheel Horse, Ford, IH, and MF.

**We Have Ford Toys Available For Shipment Call Us For A Catalog**

**Kerosene Heaters Reduced**

Ford 8 3/4% interest Waiver till April 1, 1984

Kubota 10.5% interest

Cub Cadet, Buy Now, No payment till March 15, 1984

**STRALEY FARM SUPPLY**

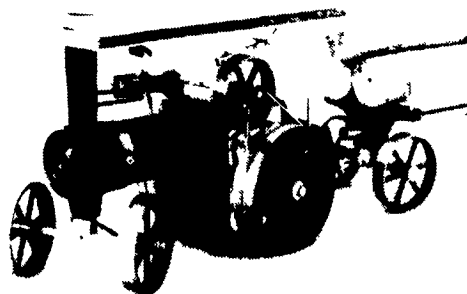
Dover, Pa. 17315

Farm - Industrial Equipment Sale & Service

Ford, IHC, Kubota, Woods, Bush Hog, Danuser, Little Giant 717-292-4443



**NEW! LIVE STEAM TRACTORS**



This working replica was used years ago in lumber camps and Threshing Runs. These tractors come complete with Brass Boilers, Copper Steam Pipes, Steel Fire Box, Cylinder, Piston and Whistle that actually blows. Made of Brass. Uses water and burns solid fuel supplied. Takes 3-5 minutes to raise steam then will go 1/2 of a mile. Self Propelled. Develops 1/15 Hp, 3000 rpm 10" long, 7" high, 5" wide. Weight 3 1/2 pounds. Fitted with reverse control, sight glass and steering extension. Can also be used to drive workshop models. N A T R Award winners. Made in England. A real work of Art, gleaming and Beautiful. Makes an ideal Mantel piece \$109.95 Postpaid.

LUMBER WAGON A highly realistic outfit. Tubular chassis has swivel front axle and draw bar which hitches on to rear of traction Engine. Simulated tree trunks are included. All steel construction \$29.95 Postpaid.

WORKSHOP The ideal companion piece to steam tractors. Can be driven by any Mamod engine or other motors. Included are Lineshaft, polishing machine, grinding machine, Power Hammer, power press \$49.95 postpaid.

SPECIAL! Complete Set STEAM TRACTOR, LUMBER WAGON and WORKSHOP \$189.95 Value for \$175.95 Postpaid.

Free Colored Brochure and price list of Steam TRACTOR STEAM POWER ENGINES STEAM ROLLER STEAM ROADSTER LOCOMOTIVE etc.

FREE BOOK "STEAM TRACTION ENGINES WAGONS AND ROLLERS" 158 colored photos 180 pages. Hardcover \$11.95 Free with any order. Will ship C.O.D. Phone Orders Taken. Orders Shipped within 3 Working Days.

**DIAMOND FARM BOOK PUBLISHERS**  
Dept. LFT Box 537, Alexandria Bay, NY 13607  
Phone (613) 475-1771



**USED EQUIPMENT**

MF 1155 Tractor  
INT. 475 DISC  
JD-BW DISC  
JD 5020 tractor  
MOTT MOWER - 48 In  
JD 54 Manure Spreader  
JD 494A Planter  
JD 694A Planter  
JD 4400 Combine  
JD 105 Combine  
JD 7000, 8 row, 30" corn planter w/Liquid Fertilizers and Monitor

JD 1250 corn planter  
Oliver 5x16 Plow  
JD 1250, 4 btm. plow  
1-JD AW disk harrow, 14'

**NEW EQUIPMENT**  
JD 415 Rotary Hoe  
JD 347 W Baler  
JD 7100 8-row 20" bean planter

JD 950 - 12 Ft. Roller Harrow  
JD 7000 - 4 Row & 6 Row Conservation Planter

2 - JD 506 Gyramor  
2 - JD 606 Gyramor  
JD 680 Rake

**OTHER LINES**  
**NEW EQUIPMENT**  
Superior-Campbell Sprayers

Superior-Scranton Livestock Equipment, (Hay Feeders, Corrals, Gates)  
Ceco Farm Buildings

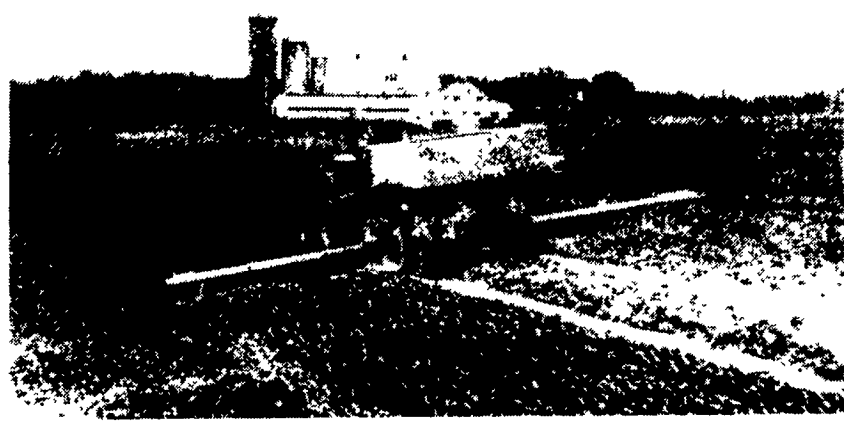
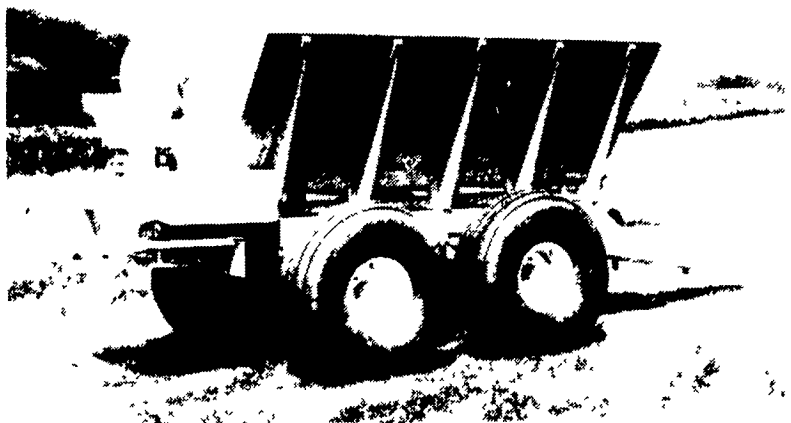
**COVERT & SONS, INC.**  
Neshanic Station, NJ 201-389-5241

Just 3 miles off Rt. 202 (Between Flemington & Somerville)

**STOLTZFUS SPREADERS**

**WET LIME SPREADER**

**SOWER SPREADER**



**SAVE:** Farmers in some areas can get lime as much as \$16 per ton cheaper if they spread it themselves.

**LESS HEADACHES:** Spread it when you want it spread.

- \* 24" Wide Bottom > To Keep Stockpile Lime
- \* 53° Sloped Sides > From Bridging.
- \* 2, 5, 8 Ton Models \* Also Spreads Fertilizer, Poultry Waste, etc.
- \* Truck Mounted or Tractor Drawn \* Rugged Construction

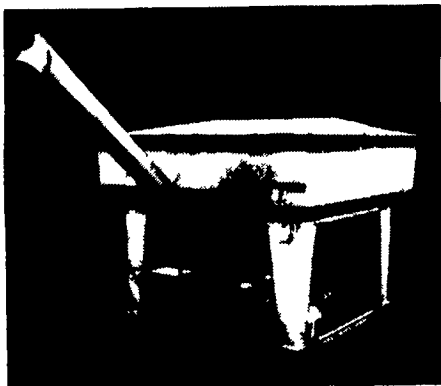
**Why Waste Fertilizer With Today's Prices?**

No need to fertilize the fence rows or spread it unevenly. With a Stoltzfus Sower Spreader you put it where you want it.

- \* Excellent for dry, free-flowing materials such as: dry lime, rock phosphate, fertilizer.
- \* Extremely accurate \* Tractor drawn or truck mounted

**ASK US ABOUT OUR FARM SHOW DISCOUNT AT BOOTH #580-581**

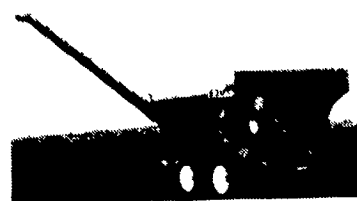
**6 Ton Stainless Steel Tender**



**1 Ton Articulating Loader**



**5 Ton Spreader Tender Combination**



**SPREADERS ARE OUR BUSINESS**

(not a sideline)

We've been in the spreader business for 35 years.

**WE SELL DIRECT**  
WRITE FOR MORE INFORMATION

**C.U. STOLTZFUS MFG. INC.**

P.O. Box 527  
Morgantown, PA 19543  
Ph. 215-286-5146