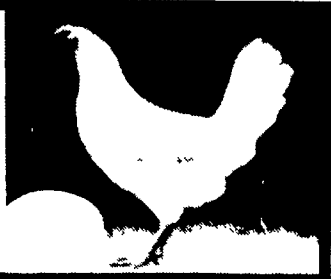


POULTRY MARKETS



N.E. Weekly Shell Egg Report

Tuesday, December 27
Report supplied by USDA

Prices paid per dozen Grade "A" Brown eggs in cartons delivered to retail stores:

| | Ex. Large | Large | Medium | Small |
|----------|-----------|-----------|-----------|-------|
| MASS. X | 1.21-1.23 | 1.20-1.22 | 1.14-1.16 | 89-91 |
| Mostly | 1.21 | 1.20 | 1.14 | 89 |
| N. HAMP. | 1.12-1.16 | 1.11-1.15 | 1.05-1.09 | 82-86 |
| Mostly | 1.14-1.15 | 1.13-1.14 | 1.07-1.08 | 84-85 |
| R.I. | 1.13-1.19 | 1.12-1.18 | 1.06-1.12 | 83-89 |
| Mostly | 1.13-1.15 | 1.12-1.14 | 1.06-1.08 | 83-85 |
| VERMONT | 1.15 | 1.10-1.12 | 1.02-1.05 | |
| Mostly | 1.15 | 1.10 | 1.02 | |
| MAINE | 1.19-1.22 | 1.18-1.21 | 1.12-1.15 | 89-92 |

X Includes Central and Western Sections only.

Weekly New York Egg Market

From Friday, December 23 to Thursday, December 29

| | Fri. | Mon. | Tues. | Wed. | Thurs. |
|------------------|----------|--------|-------|------|--------|
| WHITE | | | | | |
| Jumbo | 1.10 | CLOSED | 1.12 | 1.15 | 1.17 |
| Ex Large | 1.09 | | 1.11 | 1.14 | 1.16 |
| Large | 1.08 | | 1.10 | 1.13 | 1.15 |
| Mediums | 1.06 | | 1.08 | 1.11 | 1.13 |
| Pullets | .87 | | .89 | .92 | .94 |
| Off Grade | 1.00 | | 1.02 | 1.05 | 1.07 |
| BROWN | | | | | |
| Jumbo | - | - | - | - | - |
| Ex Large | 1.17 | | 1.19 | 1.22 | 1.24 |
| Large | 1.16 | | 1.18 | 1.21 | 1.23 |
| Mediums | 1.10 | | 1.12 | 1.15 | 1.17 |
| Pullets | Unquoted | | | | |
| Peewees | Unquoted | | | | |
| Off Grade | | | | | |
| Undergrades | .66 | | .66 | .67 | .69 |
| Checks | .64 | | .64 | .65 | .67 |

Breaking Stock: Friday 22.80-23.40, 23.10-23.40; Wednesday 23.10-23.70, 23.40-23.70; Thursday 23.40-24.90, 23.70-24.90

Delmarva Poultry

Thursday, December 29
Report supplied by USDA

Market Comment: RTC movement on whole birds is irregular and ranges from light to fair. Current production is not clearing as well as anticipated, but plants still consider themselves to be in good balance. Cutlets and leg quarters move well under a strong demand. Legs and breasts are adequate, and a discounted lot is noticed here or there. Wings have peaked, and orders are now being filled with some discounting to keep them clearing in some quarters.

The overall slaughter is moderate. Live supplies are adequate. Weights irregular, but most plants are starting to fall into the desired range. Undertone is fully steady.

Today's L.T.L. asking prices are unchanged on U.S. Grade A at .59-.64 cents.

Estimated slaughter of broiler fryers in Delmarva (000).

Estimated 12/29 1,712; Actual 12/22 1,451; Actual 12/27 1,601; Average Weights 12/27 4.21; Average Weights 12/20 4.08.

Philadelphia Eggs

Thursday, December 29
Report supplied by USDA

MARKET COMMENT: Prices unchanged to higher. Demand for cartoned eggs is good, and several dealers are having difficulty in filling orders. Floor stocks of graded jumbos and extra large are in sufficient supply with some dealers putting extra large into large cartons. Large are tight, and most traders are more than willing to take on additional stocks. Mediums and smalls irregular, ranging from short to adequate. The call for nest runs is active, particularly class 1's. The unexpectedly good cartoned demand coupled with a continual loss of supply locally has put most all traders in a firm position.

Prices to retailers; sales to volume buyers, consumer grades white eggs in cartons delivered store door:

A Extra Large 1.03-1.09; A Large 1.02-1.08; A Medium .99-1.05.

Nest Run Eggs

Prices are from Egg Clearinghouse, Inc., (ECI) Durham, N.H. and reflect trading prices for gradable nest run eggs (GNR) on ECI, a nationwide trading center for producers, packers and marketers. GNR eggs are classified by weight in 30-dozen cases, and traded in lots of either 300 or 750 cases. Prices are FOB buyers dock, and are computed Tuesday and Thursday of each week. This week's prices for each classification were:

| Classification | | DATE | DATE |
|------------------|---------|---------|----------|
| | | Dec. 27 | Dec. 29 |
| | | Tuesday | Thursday |
| Class 1 - Large | 48 lbs. | 96 | 1.03 |
| Class 2 - Large | 45 lbs. | 92 | 98 |
| Class 3 - Medium | 42 lbs. | 86 | 95 |
| Class 4 - Small | 39 lbs. | 77 | 81 |
| Breaking Stock | 48 lbs. | 76 | 85 |
| Checks | 48 lbs. | 70 | 78 |

Heinsey's Poultry Market

Root's, East Petersburg
Tuesday, December 27

Report supplied by auction

RABBITS: 4-6 lbs. range 1.00-1.32 per lb.

RABBITS: 7-12 lbs. range .90-1.08 per lb.

BUNNIES: range .50-1.25 ea.

GUINEA PIGS: range .50-1.50 ea.

GOATS: range 25.00-35.00 ea.

TOTAL NUMBER COOPS: 256.

Eastern Pa. & N.J. Poultry

Wednesday, December 28

Report supplied by USDA

Market Comment: Current negotiations are limited as the availability of live has been light and is further reduced due to the expansion of the quarantine area in Pennsylvania. Slaughter schedules are limited and remain uncertain. Canner pack movement is only fair.

Prices Paid at Farm:
Light Type Hens: 23-24.
F.O.B. Plant: 26-27.

New York Multiple Drop Broiler Report

Thursday, December 29

Report supplied by USDA

Current broiler/fryer negotiated prices for immediate delivery includes mostly multiple-drop shipments to New York City from Delmarva.

RANGE: U.S. Grade A .58-.64; Weighted AVG.: U.S. Grade A 62.81; Premium (X) Boxes 10.724.

(X) Includes special services, selected competitive brands, etc.

Belknap Auction

Dayton, Pa.

Wednesday, December 28, 1983

Report supplied by PDA

CATTLE 48. Compared with last Wednesday's market, slaughter cows steady to weak. Couple Standard slaughter steers 50.00 & 51.00. Couple Standard slaughter heifers 42.00 & 42.25. Utility and Commercial slaughter cows 37.75-42.00, Cutters 34.25-37.50, Canner & Low Cutters 26.75-34.25.

CALVES 73. Individual Choice vealer at 84.00, one Good at 75.00, few Standard 40.00-50.00, Standard & Good 90-125 lbs. 45.00-53.50, 60-85 lbs. 34.00-46.50, Utility 50-80 lbs. 20.00-31.00. Hol. Bulls 95-125 lbs. 60.00-86.00, 85-95 lbs. 47.00-56.00; few Hol. Heifers 85-100 lbs. 49.00-55.00.

HOGS 113. Barrows and gilts \$2-\$3 higher. US No. 1-2 230-255 lbs. barrows and gilts 53.00-53.60, lot 54.70, few No. 1-3 215-240 lbs. 52.60-53.10, lot No. 2-3 232 lbs. at 51.00, No. 1-3 125-160 lbs. 39.75-42.50. SOWS NO SALES. One Boar at 29.00.

FEEDER PIGS 28. Few US No. 1-3 25-40 lbs. feeder pigs 10.00-19.00 per head.

SHEEP 10. One Small lot Good 55 lbs. woolled slaughter lambs at 48.00, one small lot Utility 50 lbs. at 33.00.



Copyright 1983 by Lancaster Farming
P.O. Box 366 - Lititz, PA 17543

Office: 22 E. Main St., Lititz, PA 17543

Record-Express Office Building

Phone: Lancaster 717-394-3047

or Lititz 717-626-1164

Robert G. Campbell, Publisher

Dick Anglestein, Editor

Kim Herr, Home Editor

Trish Williams, Staff Writer

Laura England, Staff Writer

NEWS CORRESPONDENTS

Patty Gross, Bedford, Blair, Huntingdon counties

Martinsburg 814-793-4256

Robin Phillips, Berks County

Mohrsville 215-926-1261

Jane Bresee, Bradford County

Ulster 717-358-3346

Beth Hemminger, Cumberland, Franklin

and Perry counties

Newville 717-486-5322

Sally B. Bair, Lancaster County

Columbia

Joyce Bupp, York County

Seven Valleys

Nancy Kunick, Crawford & surrounding counties

Centerville 814-694-2571

Subscription Price

\$7.50 per year, \$13.00 - 2 years

\$14.00 per year outside of

PA, NJ, MD, DE, NY, VA & WV

Established November 4, 1955

Published every Saturday

by Lancaster Farming, Lititz, PA

Second Class Postage paid at

22 E. Main St

Lititz, PA 17543 ISSN0023/485

For address change form or new

subscription see Mailbox Markets.

Members of Newspaper Farm Editors Assn.,

Pa. Newspaper Publishers Association,

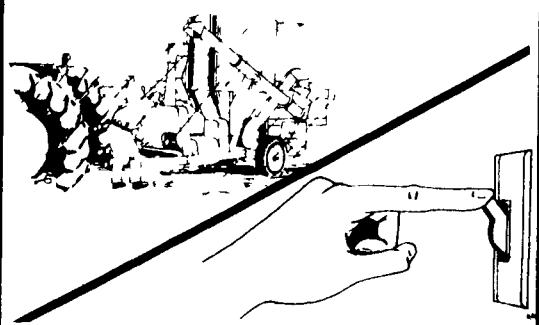
and National Newspaper Association.

Represented National by

J.L. Farmakis, Inc.

#203-966-1746

WINTER JOYS?



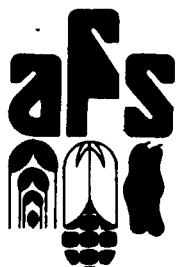
Flip A Switch....

Grind, Mix And Deliver Your Feed
Automatically

With A



FOR MORE
INFORMATION,
CALL OR WRITE
TODAY:



automatic
farm
systems

608 Evergreen Rd.
Lebanon, PA 17042
(717) 274-5333

Moyer's... Let Their Fingers Do The Walkin'



(Photos Clockwise From Top Left, Leon Moyer, Lee Reinecker, Stan Schmidt, Harold Mishler)

Because of the Current dangers of spreading the Avian Flu virus from farm to farm, representatives from Moyer's Chicks, have been making themselves scarce. We are, however, as close as the nearest phone, and we are working hard at co-ordinating supplies for customers within the Q-Zone and for those without and those out of state.

SEE YOU AT THE PA FARM SHOW
BOOTH #'s 641 and 642

Moyer's CHICKS, INC.

DEKALB
BROWN & WHITE
EGG LAYERS

Geokertown, PA 18951
(215) 536-3155

HUBBARD
WHITE MT
BROILERS

