

Livestock market and auction news



Virginia Auction Summary

December 14-21
Report supplied by VDA
Total of Va. Weekly Feeder Cattle Auction Receipts: 5,325.
TREND: \$1.00-\$2.00 higher.

Southwestern, Va. Auction Summary

December 14-21
STEERS: 300-500 lbs. Medium 1 55.00-67.00; Large 1 59.25-68.00; Small 1 51.00-63.50. 500-700 lbs. Medium 1 55.00-64.00; Large 1 55.25-64.00; Small 1 50.00-60.00. 700-1000 lbs. Medium 1 52.00-59.00; Large 1 52.25-62.00; Small 1 50.50-53.75.

HEIFERS: 300-500 lbs. Medium 1 44.00-56.00; Large 1 45.00-55.00; Small 1 40.00-52.50. 500-700 lbs. Medium 1 45.00-55.00; Large 1 45.00-58.00; Small 1 41.00-50.00; 700-900 lbs. Medium 1 38.50-49.50; Large 1 41.75-51.50.

Northern Va. Auction Summary

December 14-21
STEERS: 300-500 lbs. Medium 1 57.00-66.00; Large 1 54.00-61.00; Small 1 49.00-59.50. 500-700 lbs.

Medium 1 50.00-61.50; Small 1 52.00-53.50. 700-1000 lbs. Medium 1 46.00-59.00; Large 1 47.00-57.50.

HEIFERS: 300-500 lbs. Medium 1 40.00-52.50; Large 1 45.75-51.00; Small 1 40.00-47.00. 500-700 lbs. Medium 1 40.00-49.00; Large 1 40.00-47.50; Small 1 41.00-45.00. 700-900 lbs. Medium 1 40.00-49.00; Large 1 43.00-48.75.

Southeast Va. Auction Summary

December 14-21
STEERS: 500-700 lbs. Medium 1 53.75. 700-1000 lbs. Medium 1 49.75-53.25.

HEIFERS: 300-500 lbs. 47.00-51.00. 500-700 lbs. 500-700 lbs. 46.00.

Shenandoah Valley Livestock

Harrisonburg, Va.

Saturday, December 17

Report supplied by auction
FEEDER CATTLE: Trend: Steers 300 to 500 lbs. Steady 500 to 1000 lbs. 1.00-2.00 lower. Feeder Bulls steady; Feeder Heifer steady to 1.00 higher. Steers: M&L-1 300-500 lbs. 58.00-66.00; 500-700 lbs. 54.50-59.00; 700-1000 lbs. 54.00-58.00; Holstein 300-1000 36.00-44.00. S-1&M&L-2 300-500 lbs. 49.00-56.00; 500-700 lbs. 48.00-56.00; 700-1000 lbs.

46.00-50.00. Feeder Bulls: M&L-1 300-500 lbs. 50.50-55.00; 500-700 lbs. 47.00-53.50; 700-1000 lbs. 53.25. S-1&M&L-2 300-500 lbs. 48.00-51.00. Heifers: M&L-1 300-500 lbs. 44.00-50.00; 500-700 lbs. 43.00-46.50; 700-800 lbs. 42.00-48.00. S-1&M&L-2 300-500 lbs. 35.00-42.00; 500-700 lbs. 38.00-42.50. Stock Cows: Beef sold by cwt. 30.00-37.50; Dairy 175.00-285.00.

SLAUGHTER CATTLE: Steers-Good 2-3 54.00-58.50. Heifers-Good 2-3 50.00-51.00.

SLAUGHTER COWS: Trend-Steady. Utility & Commercial 2-4 30.00-39.25; Canner & Cutters 1-3 24.00-30.50.

SLAUGHTER BULLS 1 & 2 39.50-54.75.

LAMBS: Trend- 2.50 higher. High Choice & Prime 60.00; Choice 53.75; Feeder Lambs Choice 53.50-55.00; Slaughter Ewes 10.00-16.75.

HOGS: US 1-3 200-240 lbs. 47.70. Sows 1-3 30.00-37.50. Boars 26.25.

VEAL: Good 65.00-73.00.

SLAUGHTER CALVES: Good & Choice 45.00-53.50.

Westminster Livestock Auction

Westminster, Md.

Tuesday, December 13

Report supplied by auction

BUTCHER COWS: 2.00 over last week. High Yield 38.50-40.00; Standard & Utility 35.00-38.50; Canners 31.00-35.00; Shelly 31.00 down. Slaughter Bulls- Few Med. to Good 1500-1800 lb. 44.75-49.75. Fed Steers- Very active 2.00

higher! Choice 60.00-65.00; Good 55.00-60.00; Good Holsteins 48.00-53.25.

BUTCHER HOGS: 4.00 over last week. US #1&2 230-250 lb. 47.00-47.50. US 1&3 200-215 lb. 45.25-45.50; 270-290 lb. 44.00-45.50; 300-350 lb. 37.50-39.50. Sows- 3.00-4.00 higher; 340-550 lb. 34.00-37.00. Boars- 595-720 lb. 27.50-27.75.

VEAL CALVES: Choice 170-200 lb. 75.00-81.00. Killers 80-100 lb. 41.00-49.00; Weak & Rough 40.00 down.

CALVES RETURNED TO FARM: 5.00 higher. Holstein Bulls 95-120 lb. 60.00-80.00.

LAMBS: Good demand; Choice 100-125 lb. 53.50-55.50; Goats 25.00-43.00 per head.

STOCK CATTLE: Steady prices. Steers- Good 400-850 lb. 50.00-57.00. Heifers- Good & Choice 300-500 lb. 43.00-49.50; 500-750 lb. 41.00-45.00. Bulls- 4 Holsteins 500-650 lb. 34.50-35.50.

PIGS AND SHOATS: Scarce 3.00 higher. By the Head- 30-50 lb. 12.00-23.00; 50-75 lb. 22.00-28.00; 100 lb. to 31.50. By the Lb.- 3 head 83 lb. at 33.50.

Four States Livestock

Hagerstown, Md.

Wednesday, December 14

Report supplied by auction

SLAUGHTER: Fed Steers- Mostly steady. Choice 59.00-60.50; Good 55.00-58.00; Medium 54.00 down. Heifers- Choice 56.00-59.00; Good 51.00-55.00; Medium 50.00 down. Cows- Very active \$3.00 higher. High Yield 39.00-41.50; Average 35.00-38.00; Big Middle 30.00-34.00; Fatty Herf 29.00-33.00; Shelly 32.00 down. Fat Bulls- Individual at 59.50. Good 48.00-51.75; Medium 43.00-47.00. Veal Calves- Heavy Calves \$3.00 higher; Light Calves steady; Choice 80.00-84.00; Good 70.00-79.00; Medium 60.00-

69.00; Farm Hfrs. 50.00-57.00; Farm Bulls 70.00-85.00; Light & Weak 42.00 down. Lambs- Strong demand \$4.00 higher. Choice 57.00-59.50; Good 52.00-56.00; Medium 53.00 down.

STOCKER: Steers 300-550 lbs.- Steady prices; Choice 59.00-64.00; Good 53.00-58.00; Medium 48.00-52.00; Culls 47.00 down. Steers 600-850 lbs.- Choice 57.00-59.00; Good 51.00-56.00; Medium 50.00 down. Heifers (All Weights)- Choice 48.00-51.50; Good 43.00-47.00; Medium 38.00-42.00. Bulls- Choice 56.00-60.00; Good 50.00-55.00; Med. 44.00-49.00. Springing Heifers- to 550.00. Pigs Hd.- Large run and higher prices; 20-30 lbs. 10.00-17.00; 40-60 lbs. 18.00-25.00. Shoats by Lb.- 35.50-57.00. Slaughter Hogs- \$3.50 higher. 215-230 lbs. 45.75-46.75; 240-260 lbs. 45.50-46.50; 190-210 lbs. 44.00-45.00; 270-325 lbs. 43.00-45.25. Sows- 300-550 lbs. 33.00-37.00; Thin Sows 27.00-32.00.

Valley Livestock

Valley Stockyards

Athens, Pa.

Monday, December 19

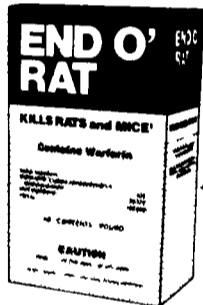
Report supplied by auction

Holstein Hfr. Calves to 51.50; Veal Calves 60.00-95.00; Vealer Bull Calves 60.00-80.00; Slaughter Calves 35.00-50.00; Grassers & Feeders 32.00-45.00; Lambs 42.00-53.00; Sheep 10.00-25.50; Hogs, 200 to 250 42.00-49.50; Sows 28.00-34.50; Boars 20.00-28.00; Pigs 12.00-35.00; Heifers 36.00-42.00; Steers no top steers; Steers, feeder 36.50-53.00; Bulls 38.00-42.00; Cows, utility 36.00-38.25; Cows, fat 34.00-36.00; Cows, medium 33.00-35.00; Cows, poor or small 25.00-30.00; Cattle Market higher; Calf Market steady; Horses small to 205.00; Ponies none; Goats 15.00-34.00; Hay 80.00 per ton.

Kills rats and mice!

End O'Rat works fast to kill unwanted rats and mice. Completely safe for use around the home, farm or factory buildings, End O'Rat is specifically formulated to appeal to the natural feeding habits of rats and mice. And End O'Rat contains Warfarin— for proven effectiveness. Put End O'Rat to work for you today!

END O' RAT



Distributed by

New Holland Supply Co.
New Holland, PA
717-354-2340

Caldwell Supply Co.
West Trenton, NJ
609-882-2223

Green Dragon Livestock Sales

1 Mile North of Ephrata, PA



COWS COWS COWS
BUYERS FROM 3 STATES

Regular consignments from Bob Kennedy & Ed Stover plus 15 other local consignors. Lots of good Northern Feeders and Stockers.

SALE EVERY FRIDAY

Bulls, Steers, Slaughter Cows, Lambs and Veal Calves

11:00 A.M.- Beef Sale Stockers & Feeders 200 to 250 each week.

12:30 P.M.- Dairy Cows

7:00 P.M.- Small Animal Sale

For Special Sales and Herd Dispersals on the farm or at our barn or other market information call: Office 717-733-2444.

WALTER H. RISSER, Proprietor



ATTENTION FARMERS

EVERY MONDAY
HATFIELD PACKING CO. and
MOYER PACKING CO.

Will Receive Your
Hogs and Cattle at the
DANVILLE LIVESTOCK MARKET

RD4, Danville, PA

- We will receive your hogs from 8 AM to 12 Noon every Monday. Your hogs will be weighed and paid for immediately.
- We will also accept your sows & boars.
- Your cattle will be received from 12:30 to 5 P.M. We will either pay you for your cattle immediately or you may sell them dressed weight.
- There will not be a commission or yardage fee deducted from your check.
- You may call our office Monday morning and we will be able to tell you the base price for hogs for the day.

HOLIDAY SCHEDULE

Closed Mon., Dec. 26, 1983
and Mon., Jan. 2, 1984

WE WILL BE OPEN
Tues., Dec. 27th & Tues., Jan. 3rd

MELVIN M. LEHMAN - Owner
Danville Buying Station
Phone: 717-275-2880



EMERY'S BUYING STATION

OPEN TO RECEIVE
YOUR MARKET HOGS

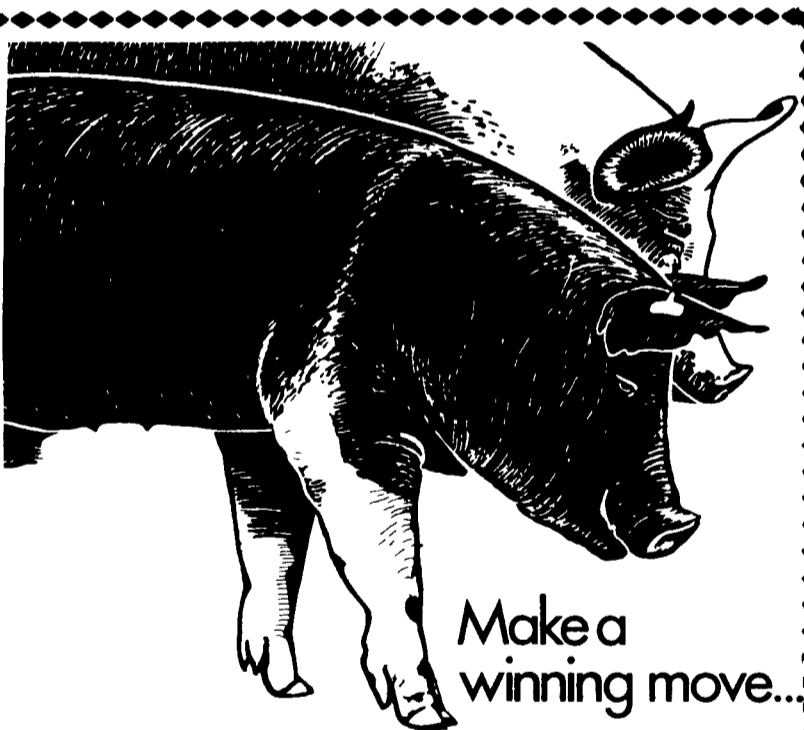
AT THE GREEN DRAGON MARKET
RD 4, EPHRATA, PA 17522
1 MILE NORTH OF EPHRATA
ON NORTH STATE STREET.

HOURS
MONDAY, TUESDAY, and
WEDNESDAY
6:00 A.M. to 11:30 A.M.

215-458-5677 Residence
717-733-9648 Office

YOU ARE PAID FOR YOUR
HOGS IMMEDIATELY

Ken & Lois Emery, Proprietors



Kleen Leen

Play to win with our complete Checker Mates Hog Breeding Program. It's the result of many years of genetic research.

It can pay off in bigger, healthier litters in the farrowing house thanks to the maternal heterosis of Checker Gilts. Plus, the money saving performance punch contributed by Checker Boars when your pigs reach the finishing house.

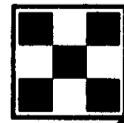
But it's more than boars and gilts. It's a complete breeding program aimed at making you a winner.

Stop in and ask us about it today.

K & K FEED, INC.
PHONE 717-866-2324
23 N PARK ST RICHLAND, PA 17087

WEST WILLOW FARMERS ASSN., INC.
PHONE 717-464-3386
WEST WILLOW, PA 17583

WOODSTOWN ICE & COAL CO.
PHONE 609-769-0069
WOODSTOWN, N.J. 08098



Purina Dealer

HESS MILLS
PHONE 717-442-4183
717-768-3301
PARADISE, PA 17562

KEYSTONE MILLS

John B. Kurtz
PHONE 717-354-4616 717-738-1088
RDS, EPHRATA, PA 17522