

Livestock market and auction news

Eighty-Four Livestock Eighty-Four, Pa. Monday, Dec. 19

Report Supplied by PDA

CATTLE 310. Compared with last Monday's market, slaughter cows \$1.50-\$2 higher. Few Choice slaughter steers 59.00-62, few Good 55.00-59, Standard 50.00-54. Few Good slaughter heifers 51.00-53, few Standard 43.50-48, few Utility 38.50-43. Utility & Commercial slaughter cows 35.25-39.50, few 39.60-40.75, Cutters 33.00-36, Canner & Low Cutters 28.00-33.50, Shells down to 21.00. Yield Grade #1 1000-1700 lbs. slaughter bulls 45.00-49.25, #2 900-1300 lbs. 42.00-45.50.

FEEDER CATTLE: Medium Frame #1 400-700 lbs. feeder steers 54.00-60. Medium Frame #1 400-600 lbs. feeder heifers 46.00-51, few #2 500-600 lbs. 41.00-44. Medium Frame #1 400-700 lbs. feeder bulls 54.00-58.00.

CALVES 229. Vealers unevenly steady. Few Choice vealers 86.00-92, Good 75.00-86, Standard & Good 90-120 lbs. 42.00-50, 60-85 lbs. 38.00-43.

FARM CALVES: Holstein Bulls 90-125 lbs. 50.00-68.00.

HOGS 89. Barrows and gilts \$2.50-\$3 higher. US No. 1-2 198-235 lbs. barrows and gilts 49.00-50.25, No. 1-3 2-240 lbs. 48.00-48.75. US No. 1-3 350-500 lbs. sows 36.00-39.75, few No. 2-3 400-600 lbs. 32.00-36.00. Few Boars 26.00-30.25.

FEEDER PIGS 22. US No. 1-3 40-75 lbs. feeder pigs 24.00-27.50 per head, No. 1-3 25-35 lbs. 13.00-15.00 per head.

SHEEP 222. Woolled slaughter lambs \$6-\$7 higher. High Choice & Prime 75-95 lbs. wool lambs 63.00-67, Choice 65-95 lbs. 56.75-61.50, few Good 50-70 lbs. 51.00-56. Slaughter sheep 12.00-17.00.

Keister's Middleburg Auction

Middleburg, Pa.
Tuesday, Dec. 20

Report supplied by the auction

CATTLE 307: High Choice & Prime slaughter steers 64.00-66.60, Good 58.00-63.00, Standard 52.00-58.00, Utility 42.00-52.00. Choice slaughter heifers 62.00-64.25, Good 58.00-62.00, Standard 52.00-58.00. Utility & Commercial slaughter cows 42.00-52.00, Shells down to 25.00. Good slaughter bullocks 50.00-53.50. Yield grade #1 1200-1950 lbs. slaughter bulls 46.00-51.85, Yield Grade #2 800-1200 lbs. 40.00-46.00.

CALVES 217: Choice vealers 75.00-92.00, Good 60.00-75.00, Standard & Good 90-110 lbs. 40.00-55.00, 70-90 lbs. 30.00-40.00.

FARM CALVES: Holstein Bulls 90-125 lbs. 70.00-103.00.

HOGS 857: US No. 1-2 210-235 lbs. barrows & gilts 52.60-53.60, No. 1-2 200-250 lbs. 51.50-52.50, No. 2-3 190-270 lbs. 47.75-51.75.

SOWS: US No. 1-3 350-600 lbs. sows 36.00-40.00, few at 44.00, few

No. 2-3 300-500 lbs. 30.00-36.00.

BOARS: 28.00-34.00.

FEEDER PIGS 285: US No. 1-3 10-20 lbs. feeder pigs 8.00-20.00 per head, No. 1-3 25-30 lbs. 20.00-42.00, No. 1-3 50-75 lbs. 40.00-46.00 per head.

SHEEP 11: Slaughter ewes 18.00-26.00.

Dewart Livestock

Dewart, Pa.

Monday, Dec. 19

Report Supplied by PDA

CATTLE 253. Compared with last Monday's market, slaughter cows \$1-\$1.50 higher. Choice 2-4 1000-1400 lbs. slaughter steers 61.50-64.50, Good 55.75-59.75, few Standard 46.00-52.25. Few Good slaughter heifers 51.75-57.25. Utility and Commercial slaughter cows 35.50-39, couple 41.85, Cutters 34.00-36.50, Canner and Low Cutters 31.00-34.25, Shells down to 26.75. Few Good slaughter bullocks 55.75-57.00. Few Yield Grade #1 1220-2140 lbs. slaughter bulls 45.25-55.10.

FEEDER CATTLE: Medium Frame #1 400-750 lbs. feeder heifers 44.00-51.50.

CALVES 254. Few Choice vealers 72.50-87.50, few Good 60.00-73, Standard & Good 110-130 lbs. 53.00-60, 70-105 lbs. 42.00-49, Utility 55-85 lbs. 30.00-44.00.

FARM CALVES: Holstein Bulls 90-130 lbs. 65.00-109, mostly 75.00-100.00.

HOGS 175. Barrows and gilts \$2-\$3 higher. US No. 1-2 205-240 lbs.

barrows and gilts 51.80-52.50, No. 1-3 220-265 lbs. 49.10-51.80, few lots No. 1-3 135-195 lbs. 48.00-50.00. US No. 1-3 350-575 lbs. sows 33.00-39.50. Boars 26.00-36.50.

FEEDER PIGS 210. US No. 1-3 20-30 lbs. feeder pigs 18.50-26.50 per head, No. 1-3 30-45 lbs. 24.00-29.50 per head.

SHEEP 4. Few Slaughter ewes 14.50-28.00.

PENNSYLVANIA
MARKETS

DAIRY MARKETS

New Holland Dairy

New Holland Sales Stables
Wednesday, December 21

Report supplied by auction

Reported receipts of 149 cows, 91 heifers, and 6 bulls.

Market steady.

Load of PA Fresh cows 620.00-1260.00.

Load of Canada Fresh cows 600.00-1180.00; springers 550.00-1070.00.

Load of NY Fresh cows 850.00-

1590.00; springers 735.00-1060.00.

Load of PA Fresh cows 550.00-930.00.

Load of PA Fresh cows 470.00-990.00.

Load of PA Fresh cows 570.00-950.00.

Load of Franklin Co. Fresh cows 530.00-810.00.

Locally consigned cows 360.00-1125.00.

Springing heifers 400.00-800.00.

Open heifers 220.00-330.00.

Bulls 470.00-660.00.

KING'S AUCTION, KIRKWOOD

Hay, Straw and Grain Auction Every
EVERY TUESDAY

12:00

Located Rt. 472 5 miles south of Quarryville or 6 miles north of Oxford at Shaub's Auction House.

No out of state checks accepted without bank approval
ALL TRUCKERS AND FARMERS WELCOME

Hay, Straw, Corn & Misc. SALE EVERY MONDAY

12 NOON
Dewart Livestock Auction
Dewart, PA

For information call
George Deitrick 717-568-5454
or H.H. Mylin 717-568-7271

ATTENTION HOG PRODUCERS

Are you tired of feed companies telling you what to use and what to pay for boars with little or no figures? Analyze these carcass figures of Hampshire sired barrows exhibited at Keystone.

RESERVE GRAND CHAMPION CARCASS

237 lbs. 1.3 BF 32.4 Long 6.3 LEA

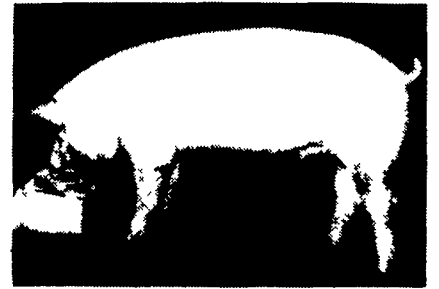
RESERVE GRAND CHAMPION ON FOOT

251 lbs. 1.1 BF 32.9 Long 6.5 LEA

These individuals were littermates.



Litter 122-8 sired by Chug



Litter 122-6 sired by Chug

Ave. on 6 crossbreds
226 lb. 1.1 BF 31.9 Long 5.45 LEA

CHAMPION HAMPSHIRE CARCASS

213 lbs. 1.0 BF 30.7 Long 5.4 LEA

RESERVE CHAMPION HAMPSHIRE CARCASS

235 lbs. 1.1 BF 32.2 Long 5.1 LEA

Ave. on 6 Hampshires

229 lbs. 1.0 BF 31.8 Long 5.2 LEA

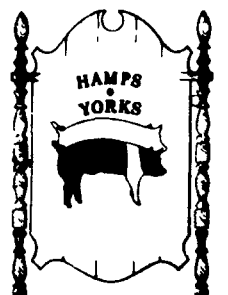
★ ★ ★ ★ ★ ★ ★ ★ ★ ★
PREDICTABLE GENETICS FOR SALE NOW
30 HAMPSHIRE & YORKSHIRE BOARS READY FOR
SERVICE; HEALTHY; AGGRESSIVE; SOUND
DELIVERY AVAILABLE

franklin feeser

BOX 372 • TANEYTOWN, MARYLAND 21787
Phone: (301) 751-1287

"We guarantee what we sell"

Next Production Sale February 4, 1984



VINTAGE SALES STABLES, INC.

AUCTIONS

Starting
THURSDAY, NOV. 3, 1983

Every Thursday at 1 P.M.

HAY, STRAW & GRAIN

Sold on Commission

10 miles east of Lancaster, 8 miles west of Coatesville on Rt. 30, Paradise, PA.

L. Robert Frame, Manager

For information

717-442-4181

215-458-8518

ATTENTION HOG PRODUCERS

Every Saturday
VINTAGE SALES STABLES, INC.

Needs 500 more hogs to fill our packers and small packers orders.
(Also 30 more sows each week from 300-400 lbs.)

Auction Time 9:00 A.M.

Commission on hogs \$1.70

Phone 717-768-8204

Or 215-458-8518

Special Every Monday, Wednesday,

Thursday and Friday

7:00 - 12:00

BUTLER FOODS, INC.

of Philadelphia, PA

Will buy your hogs direct. No yardage, no commission, payment on the spot.

Call Ed Herrmann

717-442-4742

Location - At Vintage Sales Stables, Inc., 10 miles east of Lancaster, PA on Rt. 30.



ATTENTION YORK CO. FARMERS

Looking!!! For Quality
Hogs

Every Monday

HATFIELD PACKING CO.

BUYING STATION AT

SECHRIST SALES CO.

LIVESTOCK AUCTION

R.D. 1 Stewartstown, PA

..Top Select Price on #1 & 2 Hogs 215 - 245 lbs.

.. We will receive your hogs from 6 A.M. until ???

.. Your hogs will be weighed & paid for immediately

.. There will not be a commission or yardage fee

.. You may call our office Monday morning for base price

.. Please give us a chance to market your hogs

FOR INFORMATION CALL
717-993-6130