

Livestock market and auction news

Central U.S. Carlot

Wednesday, December 14
Report supplied by USDA
Compared to Tuesday's 4:00 Report: Steer and Heifer carcasses steady except Choice 4 Heifers \$.50 higher. Trade slow. Demand light to moderate. The gross boxed beef cut-out value declined \$.06 to an estimated \$102.19 per cwt., 102 loads boxed cuts reported.

Sales reported on 63 loads of Steer and Heifers carcasses.

STEER BEEF

34 Loads
FOB Omaha Basis
Choice 3 600-900 lbs. 98.00, steady; 600-700 lbs. 97.50-98.50.
Choice 2 600-900 lbs. 99.50-100.00.
Good 2-3 600-900 lbs. 96.00, steady.
Good 2 & Low 3 600-700 lbs. 95.50-96.00.

FOB Amarillo Basis
Choice 3 600-900 lbs. 98.00, steady.
Good 2-3 600-900 lbs. 96.00, steady.

HEIFER BEEF
29 Loads
FOB Omaha Basis
Choice 3 550-700 lbs. 96.00, steady; 500-550 lbs. 92.00, steady; 400-500 lbs. 90.00, steady; 600-700 lbs. 96.00.
Choice 4 500-700 lbs. 87.50, .50 higher.
Good 2-3 550-700 lbs. 94.00, steady.
Good 2 & Low 3 600-700 lbs. 93.00-93.50.

COW BEEF
23 Loads
FOB Omaha Basis
Cow carcasses unevenly steady.
Bng Utility 2-3 400/up lbs. 65.00 (West).
Canner & Cutter 1-2 350/up lbs. 66.00-69.00 (Midwest).

FOB Amarillo Basis
Bkrg Utility 3-4 400/up lbs. 65.00 (West).
Bng Utility 2-3 400/up lbs. 67.00-68.00.
Canner & Cutter 1-2 350/up lbs. 70.50-71.50.

BULL BEEF
3 Loads
FOB Omaha Basis
Rull 1 2 600/up lbs. 75.50-80.00.

PRIMAL BEEF CUTS
13 Loads
FOB Omaha Basis
Choice 3: Hinds (H) 120-170 lbs. 105.00-106.00; Fores 130-210 lbs. 91.00.
Good and Choice 2-3: Short Plates 51.00-52.00.

BONELESS PROCESSING BEEF/BEEF TRIMMINGS
6 1/2 Loads
FOB Omaha Basis
90% Chem Lean Fresh 94.00-97.00.
50% Chem Lean Fresh 41.50-42.00.

FOB Amarillo Basis
90% Chem Lean Fresh 98.00-100.00, mostly 99.00.
90% Chem Lean Frozen 99.50-101.00.
85% Chem Lean Fresh 93.00.
50% Chem Lean Fresh 42.50.

Compared to Tuesday's 4:00 report: Fresh Pork Loins 14-17 lbs. regular trim \$4.00-7.00 lower than Monday. Spareribs \$1.00-5.00 higher. Skinned Hams without adequate comparison, but firm-tone definite. Sdls Bellies steady to \$1.00 higher. Trading slow to moderate for most items, except

active on Skinned Hams. Demand light to good. Offerings moderate. Sales reported on 66 loads of Fresh Pork Cuts plus 9 loads of Trimmings & Boneless Processing Pork.

FRESH PORK CUTS
LOINS: (Regular) 14-17 lbs. 82.00-84.00, 4.00-7.00 lower than Monday; 17-22 lbs. 75.00, no comparison. (Retail Trim) 14-17 lbs. 96.50, generally steady; 14-17 lbs. 100.00 short cut, generally steady.

PICNICS: 4-8 lbs. 45.00-46.00, no comparison.
BOSTON BUTTS: 4-8 lbs. 67.00, no comparison; 8/up lbs. 58.00, no comparison.

SPARERIBS (frozen): 3.5/down lbs. 108.00-113.00, 1.00-5.00 higher; 2.5/down lbs. 107.00 T.I.S., no comparison; 3.5-5.5 lbs. 92.00, 1.00 higher.

SKINNED HAMS: 14-17 lbs. 93.00; 17-20 lbs. 90.00-93.00; 20-26 lbs. 87.00; load 86.50.

SKINNED HAMS, (frozen) 14-17 lbs. 79.00.

BELLIES (Sdls - Skin On) 10-12 lbs. 42.50; 12-14 lbs. 54.25-54.50; 14-16 lbs. 54.75-55.25; 16-18 lbs. 53.25-53.50, .25-.50 higher; 18-20 lbs. 47.50, generally steady; 20-25 lbs. 43.00, steady-1.00 higher.

PORK TRIMMINGS/ BONELESS PROCESSING PORK
(Chemical Lean)

42% Lean Trimmings Fresh 30.00, 1.00 higher.

42% Lean Trimmings Frozen 32.00-32.50.

72% Lean Trimmings Fresh 57.00.

Boneless Picnics Fresh 57.00.

Four States Livestock Hagerstown, Md.

Wednesday, December 7
Report supplied by auction
SLAUGHTER: Fed Steers-\$1.00-\$2.00 higher. Choice 60.00-62.00; Good 55.00-59.00; Medium 54.00 down; Dairy Type 42.00-48.00. Heifers- Dry Fed Choice 56.00-58.00; Good 50.00-55.00; Medium 49.00 down; Dairy Type 40.00-46.00. Cows- \$2.00-\$3.00 lower due to big runs nationwide; High Yield 35.00-37.75; Average 31.00-34.00; Big Middle 26.00-30.00; Fatty Herf 25.00-29.00; Shelly 28.50 down. Fat

Bulls- \$1.50 lower; Good 44.00-46.25; Medium 40.00-43.00. Veal Calves- \$2.00 lower, light calves steady; choice 74.00-75.00; good 65.00-73.00; Medium 55.00-64.00; Farm Hfrs. to 53.00; Farm Bulls 100-120 lbs. 75.00-90.00; 90-100 lbs. 55.00-74.00; Light & Weak 42.00 down. Lambs- \$2.00 higher; Good 48.00-51.50; Medium 43.00-47.00.

STOCKER: Steers 300-550 lbs.- Very active, steady to \$1.00 higher; Choice 59.00-63.00; Good 53.00-58.00; Medium 48.00-52.00; Culls 47.00 down. Steers- 600-850 lbs. Choice 56.00-59.00; Good 50.00-55.00; Medium 49.00 down. Heifers- All Weights; Choice 46.00-50.50; Good 41.00-45.00; Medium 37.00-40.00. Bulls- Choice 52.00-55.00; Good 45.00-51.00; Medium 44.00 down. Spring Heifers- to 510.00. Pigs, Hd.- \$1.00 higher; 20-30 lbs. 5.00-17.00; 40-70 lbs. 18.00-30.00. Shoats by Lb.- to 34.00. Slaughter Hogs- 215-230 lbs. 42.00-42.50; 240-260 lbs. 41.75-43.00; 265-280 lbs. 41.00-42.35; 195-210 lbs. 40.00-41.85. Sows- 300-600 lbs. 32.00-35.50. Thin Sows- 28.50-31.00.

Joliet Cattle

Thursday, December 15
Weekly Cattle Friday through Wednesday's salable receipts 3,000; 5 days last week 2,757; same period a year ago 3,917. Trading moderate to moderately active for the week. Slaughter steers ended the week 50 to 1.50 higher than Wednesday of last week. Slaughter heifers ended the week 1.00-2.00 higher. Cows ended the week steady.

SLAUGHTER STEERS: Choice few prime 3-4 1200-1350# 65.50-66.50 Monday; 64.50-65.50 Wednesday. Choice 2-4 1050-1350# 62.50-65.00 Monday; 62.00-64.50 Wednesday. Load choice 2-3 880# 59.50 Wednesday. Mixed good and choice 2-3 1000-1250# 61.50-63.00 Monday; 61.00-62.50 Wednesday.

SLAUGHTER HEIFERS: Choice 3 1200# load 64.50 Wednesday. Choice 2-4 900-1125# 61.00-63.00 Monday; 60.00-63.00 Wednesday. Mixed good and choice 2-3 850-1000# 59.00-61.50 Monday; 58.00-60.50 Wednesday.

COWS: Breaking utility and commercial 1-3 28.00-33.00.

ATTENTION HOG PRODUCERS

Every Saturday
VINTAGE SALES STABLES, INC.

Needs 500 more hogs to fill our packers and small packers orders.
(Also 30 more sows each week from 300-400 lbs.)

Auction Time 9:00 A.M.

Commission on hogs \$1.70

Phone 717-768-8204

Or 215-458-8518

Special Every Monday, Wednesday,

Thursday and Friday

7:00 - 12:00

BUTLER FOODS, INC.

of Philadelphia, PA

Will buy your hogs direct. No yardage, no commission, payment on the spot.

Call Ed Herrmann

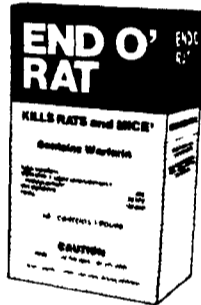
717-442-4742

Location - At Vintage Sales Stables, Inc., 10 miles east of Lancaster, PA on Rt. 30.

Kills rats and mice!

End O'Rat works fast to kill unwanted rats and mice. Completely safe for use around the home, farm or factory buildings. End O' Rat is specifically formulated to appeal to the natural feeding habits of rats and mice. End O' Rat contains Warfarin - for proven effectiveness. Put End O' Rat to work for you today!

END O' RAT



Distributed by

Animal Medic Supply
Manchester, PA
1-800-632-1831

David Laub
Allentown, PA
215-797-6530

For quotations of next week's prices
call collect 215-488-7617

PA WATTS NUMBER 800-342-2249

LESS LABOR

VERY
SANITARY



LESS DOA'S

LESS COND.

Buyers of Leghorn Fowl

SECHLER'S POULTRY, INC.

Box G, Strausstown, PA 19559

SCOTT SECHLER

RICHARD SECHLER

NELSON LEGG

FEEDER
PIGS
&
CATTLE

Best of Quality
BOYCE

LIVESTOCK CO., INC.

Shelbyville, Tenn.

615-294-5121

BOB BOYCE

615-294-5301

BEEFALO
FOR SALE

-Semen in stock
-1/2, 3/4, 7/8 animals

BEEFALO N & J

4270

Quakerbridge Rd.

Princeton, NJ 08540

609-896-0336