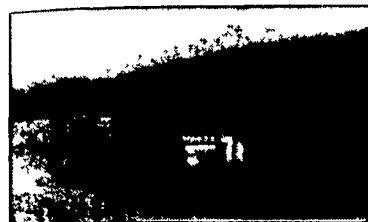
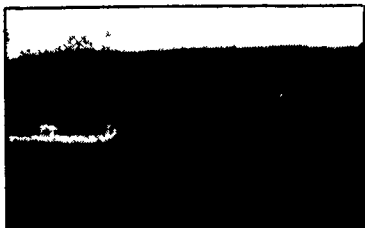


**WILLOW SPRINGS**

838 Acres Between Lexington and Staunton Cattle breeding/steer feeding operation with 200 cow/calf capacity at Brownsburg Automatic feeding systems with two 600-ton silos & covered bunkers 18 ft grain bin and dryer sheep barn machine shed Modern 2 story brick home on ridge overlooks valley Two tenant houses Numerous springs branches plus 3 acre lake \$835,000

**LITTLE RIVER**

383 Acres River bottom farm between Lexington and Staunton with approximately 220 acres in open and improved pasture and cropland Two feeding barns with attached sheds granary and shed two silos scales kennel and other miscellaneous equipment and farm buildings A fine 8 yr old brick residence overlooks farm and surrounding game filled mountains \$375,000



**SPRING BRANCH**

197 Acres A well maintained Valley farm near Lexington with an unusually fine balance of pasture hayfields and cropland in 101 acres the remaining acreage in hardwood forest Spring Branch flows through the center of the farm The eight room farm house is surrounded by maples Large barn granary and several out buildings \$167,000

CONTACT FOR FURTHER INFORMATION AND FREE CATALOG

**G. Otis Mead, III**  
Accredited Farm and Land Broker

**MEAD ASSOCIATES**  
INCORPORATED

**James W. Moore**  
Accredited Farm and Land Broker

Evening:  
703/463-2740

Evening:  
703/463-7050

21 North Main Street, Lexington, Virginia 24450 Telephone 703/463-7168

**ACCESSIBLE BUT SECLUDED**

24 ac. near State Land, private setting, mostly wooded. \$14,400 (W778)

**25 AC. FARMETTE**  
Clean 3 BR, 1 1/4 bath home, 2 car garage, very private setting. \$55,000 (W775)

**LIKE A LAKE?**

7 acres overlooking Hills Creek Lake, 3 bedroom rancher, heated garage, & shed. Near State Land. \$29,900. (W757)

**ERA-Homestead Realty**  
23 E. Avenue  
Wellsboro, PA 16901  
717/724-7161

**90 ACRES**

Near Hills Creek Lake, wooded/open, divided by road, 1/2 tillable, homestead/retreat, subdivision potential, \$53,500. (M1561)

**106 ACRE BEEF FARM**

Paved road, 2 houses, barn, stream, ready to move in \$95,000. (M1558)

**PLENTY OF PRIVACY**

24 acre open/wooded, private country setting, terms. \$12,000. (M1536)

**ERA-Homestead Realty**  
267 S. Main St.  
Mansfield, PA 16933  
717/662-3287

**REDUCED**

12'x65' mobile with addition, situated on 2.5 acres, oil and wood heat. Located in Potter County. \$18,320 (D250)

**OPERATING DAIRY**

42 acres, 81 stanchions, 2 silos, store front, 3 BR home, garage and workshop with upstairs apartment. \$150,000. (D301)

**PANORAMIC VIEWS**

From this 5 acre tract in Harrison township. Spring rights, surveyed, excellent hunting area. \$6,000 (D217)

**ERA-Homestead Realty**  
168 W. Main St.  
Westfield, PA 16950  
814/367-2222



**REAL ESTATE**

**ELKLAND TWP. SULLIVAN COUNTY**

Custom built in 1981 2 story frame salt box dwelling, 3 bedrooms, 1 1/2 baths, large living room with Cathedral ceiling and balcony, dining room and eat-in-kitchen, full basement, electric/wood heat on 3.25 acres with excellent mountain view, small barn, pasture, fruit trees and wooded area. \$69,500

**OPEN HOUSE:**  
SAT. DEC. 17  
1-4 PM Or CALL  
FOR APPT.  
DAN EBY  
717-924-3604

**GOING TO AFRICA**  
Christian family leaves great operating dairy in Herkimer County to begin missionary work.

- 207 acres, 155 tillable, rich soils
- 60 tie barn with 2" boumatic line, 850 bulk tank and new silo.
- 56 top milking holsteins, gross milk \$96,000
- 3 tractors includes JD 4010 and 3020 and huge line-up of modern equipment
- Colonial home with over \$30,000 in interior
- lots of terms, OWNER WANTS IMMEDIATE SALE, \$195,000 stocked and equipped or \$135,000 bare

**Top Freestall Complex Will Be Sold Before Spring**

- Modern 80 unit facility built 1970 all steel frame with double fix herring-bone parlor
- Over \$17,000 invested in new super milking system in April 1983 plus new 1500 gal. Zero tank

- Harvestores 20x50 Martin Silos, Clay self feeding system with Swartz weigh master
- 52 stall heifer complex with bunk feeding, new in 1975 plus machine shed
- Special setting 242 acres, 160 tillable, excellent soils, 3 ponds.
- Super shape 4 bedroom colonial vinyl sided, new kitchen, new heating system
- Great terms offered on their price of \$250,000, \$65,000 down. Balance at 10%
- Over 150 head holstein. Nearly 100 milking and large selection of modern equipment. Owner says lets talk price
- You won't find a better free stall package anywhere for the price. Don't wait to call if you've been searching for a clean, efficient, modern set-up that's affordable.

**Homestead Realty**  
Aurrieville Road RD 1  
Fultonville, N.Y. 12072  
518-922-6301

**REAL ESTATE**



**EXCLUSIVE PA FARMS FOR SALE**

See our detailed ad in the December 3 and December 24 issues. Please call or write our office for detailed farm list.

**PAUL M. LONGACRE REAL ESTATE**

Box 186 Rt. 100  
Hereford, PA 18056  
215-679-5919

Also licensed in DE, MD & NJ

**SOUTHERN YORK CO. FARMS**

**160,000**  
Fawn Grove - call today to see this very well kept, restored farm house in the middle of 40+ acres with outbuildings, barn, stream & pond A must to see!!

**199,000**  
Stewartstown - 55+ Acres Homestead with like new two story, 4 bdrm, 2 1/2 bath Colonial home Lounge around your inground pool and overlook some of Southern York County's most beautiful country side!!

**99,500**  
Brogueville - 69 acres of that hard to find balance of tillable and woodland. Enjoy the serenity walking through your woods by the stream or fox and pheasant hunting in the vast fields

**115,000**  
Shrewsbury - 50 acre farm with historic stone house, large bank barn, summer house, and more make up this outstanding buy Ideal for vineyard, horses, cattle, or kids!!

**139,500**  
Cross Roads - ideal for part time farming, horse or anything else you want to raise or grow 60 acres of rolling country side. Swiss chalet w/stream and very much charm including a copper hooded fireplace in living room

**89,900**  
Spring Grove - enjoy this quiet country setting on 35 acres of beautiful land. Charming frame log home with 4 BR, 1 1/2 bath, Barn and other out-buildings included Plenty of room to grow



**MARKET SQUARE SHREWSBURY, PA**  
717-235-6802 or 428-3907

**NORTHUMBERLAND COUNTY**

**F2-3-500 R D #1, Paxinos** Beef or General farm Total 116 acres with minimum 100 acres tillable Soils in top condition and good producers All buildings have been completely renovated or have been erected since 1979 2 story/2 family, brick farm house also completely remodeled, excellent quality and tastefully decorated Attractive setting with good access Call for additional information

**F2-3-501 R D #3, Sunbury** Beef or general farm, 63 acres approx 50/55 acres tillable with remaining in fenced pasture Bank barn and other buildings in excellent condition Super "B" grain dryer with 2500 Bu wet/900 Bu dry holding bins Dump pit, grain elevator, 90' leg w/cleaner Total 63,000 Bu storage capacity Additional information available

**L2-508 Shamokin Township farm** 85 acres total 40/45 tillable & pasture with remaining woodland 8 to 10 acre tract never timbered 7 room, 4 Br house open for your decorating ideas Bank barn and equipment shed in fair condition 7 1/2 miles from Sunbury, priced at \$95,000

**L1-525 R D #2, North'd** 139 acres with approx half tillable, 400' frontage on hard surface road Possibility of return on investment with sale of attractive, building sites Owner will consider assisting in financing Priced under \$850 per acre

**COLUMBIA COUNTY**

**L2-3-504** 118 acres 70 acres tillable and 48 acres woodland Excellent access - within 5 miles to Interstate 80 on Route #44 at Buckhorn exit Property divided by township road and owner would consider separate sales Priced at below present area sales per acre



**BOWEN AGENCY, INC.**  
22 N. Market St.  
Selinsgrove, PA 17870  
(717) 374-2165

Art Bowen 743-7556 Dale Heim 473-3341 Dave Herbst 374-0257

**SELLING YOUR FARM?**

**Auction or Brokerage?**

It is your option when you call us. We will explain both plans and then you choose. No obligation.



**SANFORD G. LEAMAN**  
Assoc. Broker & Auctioneer

**BERKS CO.** 150 ac. modern dairy 2 lg silos lg new imple shed, farrow house, lg stone farm house, 2nd set of bldgs w/stone farmhouse

**NEW LISTING**

**NORTHUMBERLAND CO.** 200 plus ac modern dairy farm, capacity for 185 cows, 12 unit milking stable with automatic take off, 2 sets of buildings, high state of cultivation One of the most beautiful farms in Northumberland County Call for details

**SNYDER CO.** 72 ac general farm or produce truck farm, large brick house, barn, silo, etc Priced for quick sale with February possession

**ADAMS COUNTY**

75 ac 55 cow comfort stall w/pipeline 20' x 70' silo, pond, 5 bedroom home

**YORK COUNTY**

Restored farmhouse, bankbarn w/sheep pens & housing, 53 ac total w/30+ tillable, lg spring fed pond

**DAUPHIN COUNTY**

54 ac w/36,000 broiler operation could be layers w/cages farrowing pens in bankbarn Good horse farm possible

**LANCASTER COUNTY**

42 ac w/creek frontage for irrigation, bankbarn, tobacco shed, ideal as a produce farm

114 ac w/modern free stall barn, 12 cow milk parlor, 2 Harvestores & 2 stave silos, lg pond, rented ground nearby, ranch home and more

**LYCOMING COUNTY**

24' x 70' silo, 66 comfort stall bank barn impl shed, 284 ac w/160+ tillable, 2 5 bedroom houses, priced rite

**UNION COUNTY**

120 ac beef farm, lg bankbarn, grain bins, frame home, dairy poss Owner fin 75 ac w/102 free stalls, 10 cow strip milk stable w/pipeline, partially remodeled home, impl shed, plenty of rented land nearby

230+ ac modern dairy barn cleaner, pipeline, lg brick home, modern out bldgs, owner fin in Mennonite area

120 ac free housing dairy could be comfort stall barn lg modern home

**PERRY COUNTY**

Amish area 68 ac no bldgs Bldgs and additional land rent poss Bldgs set up for dairy

57 ac Amish area, barn, woodland and approx 40 ac tillable

**MIFFLIN COUNTY**

15 ac with cabin, furniture, BEAR, DEER & TURKEY Good hunting

**CUMBERLAND COUNTY**

75 ac dairy, limestone soil, modern farmhouse, Morgan free stall barn w/bunkfeeder, Mennonite area

60 ac w/bankbarn, trench & stave silos Level land no rocks, dairy/steers

89 ac farm, beef and hog opporation Large 2 family brick dwelling, plus other buildings Just reduced

**NORTHUMBERLAND COUNTY**

83 ac dairy, retail shop, 2 dwellings, Amish and Mennonite area Excellent soil

42 ac dairy or steer farm w/lg bankbarn, 1 high moisture silo, 1 reg w/bunkfeeders, brick dwelling In Mennonite & Amish areas

**SNYDER COUNTY**

110 ac dairy, barn cleaner, 29 stanchions, lg brick home, in Amish area Limestone soil

If you are thinking of buying or selling a farm or farmland call Sandy today He will be glad to serve you in any county

**HIGH REALTY CORP.**

1837 William Penn Way  
Lancaster, Pa. 17601  
717-569-4264

A High Industries, Inc. Company

