

Livestock market and auction news

Lebanon Valley Livestock

Tuesday, December 13
Report Supplied by PDA

CATTLE 270. Compared with last Tuesday's market, slaughter cows steady to 50 cents lower. Choice 2-4 1125-1415 lbs. slaughter steers 61.85-64.10, Good 59.85-61.85, few down to 57.50; Few Good & Choice holsteins 52.00-55.85, Standard 45.00-52.10, few Utility 39.00-43.50. Few Choice slaughter heifers 60.75-62.10, few Good 52.25-54.00, Standard 40.00-48.60, Utility

& Low Standard 36.00-39.25. Utility & Commercial slaughter cows 36.85-39.75, two 41.00&49.50, Cutters 34.00-37.50, few 39.75, Canner & Low Cutters 28.75-34.85, Shells down to 23.50. Few Good slaughter bullocks 46.25-50.50, few Utility 43.00-47.00. Few Yield Grade #1 1465-1790 lbs. slaughter bulls 48.00-53.00.

CALVES 253. Vealers grading Standard and Good steady to strong. Two Choice vealers 80.00&95.00, One Good at 56.00, Standard & Good 90-120 lbs. 46.00-47, few 50.00, 60-85 lbs. 40.00-44, few

Utility 55-100 lbs. 34.00-40.00.

FARM CALVES: Holstein Bulls 90-120 lbs. 65.00-90, mostly 80.00-88, few 85-95 lbs. 44.00-52.00.

HOGS 88. Barrows and gilts \$4 higher on small supply. US No. 1-2 230-245 lbs. barrows and gilts 48.00-48.25, No. 1-3 230-235 lbs. 47.10-48.10, lot No. 2-3 245 lbs. at 46.60, few No. 2-3 285-385 lbs. 40.00-45.35. US No. 1-3 330-500 lbs. sows 33.50-35, No. 2-3 420-535 lbs. 31.25-33.50.

Few Boars 23.00-26.00.
FEEDER PIGS 14. US Utility 55-120 lbs. feeder pigs 24.00-32 per hundredweight.

SHEEP 13. Two Choice 25&30 lbs. New Crop Lambs 77.00&80.00, Choice 50-100 lbs. woolled lambs 42.00-47, one at 52.00, One Good 55 lbs. at 40.00. **GOATS** 7: 15.00-45 per head.

Chambersburg Livestock

Thursday, December 8
Report Supplied by PDA

CATTLE 380. Compared with last Thursday's market, slaughter cows 75 cents-\$2 lower. Few Good slaughter steers 53.85-59.75, few Good holsteins 54.25-55.10, few Standard 48.25-53.85, few Utility 37.75-40. Few Good slaughter heifers 57.75-58.50, few Standard 46.00-52.50. Utility & Commercial slaughter cows 33.75-36.75, couple 37.60, one at 40.00, Cutters 31.85-34.85, Canner & Low Cutters 28.25-31.85, Shells down to 24.00. Few Yield Grade #1 1090-1800 lbs. slaughter bulls 45.50-51.75, couple down to 38.60.

CALVES 554. Vealers grading Good and Choice \$5-\$7 higher. Few Prime vealers 96.50-100, Choice 85.00-99, Good 60.00-82, few Standard and Good 100-125 lbs. 50.00-55, 70-95 lbs. 41.00-47, Utility 60-90 lbs. 20.00-43.00.

FARM CALVES: Holstein Bulls \$10-\$15 higher. Holstein Bulls 90-130 lbs. 55.00-95, mostly 75.00-90;

Holstein Heifers 90-130 lbs. 50.00-63.00.

HOGS 66. Barrows and gilts \$3 higher. US No. 1-3 210-250 lbs. barrows and gilts 43.50-44.35. US No. 1-3 320-500 lbs. sows 32.50-37.25. Few Boars 22.00-28.25.

FEEDER PIGS 67. Lot US No. 1-3 30 lbs. feeder pigs at 20.00 per head, Utility 20-40 lbs. 5.00-9.00 per head.

SHEEP 9. Few Choice 90-105 lbs. woolled slaughter lambs 49.50-53.50. **GOATS** 15: Large 20.00-47.00 per head.

New Holland Dairy

New Holland Sales Stables
Wednesday, December 7

Report supplied by auction
Reported receipts of 125 cows, 52 heifers, and 10 bulls.

Market steady.

Load of Franklin Co. Fresh cows 650.00-1000.00.

Load of Connecticut Fresh cows 785.00-1550.00; springers 825.00-1225.00.

Load of PA Fresh cows 850.00-1000.00.

Load of PA Fresh cows 540.00-810.00.

Load of 25 hd. all stages cows 425.00-925.00.

Locally consigned cows 280.00-1060.00.

Springing heifers 475.00-910.00.

Open heifers 270.00-450.00.

Bulls 250.00-710.00.

VINTAGE SALES STABLES, INC.

AUCTIONS

Starting
THURSDAY, NOV. 3, 1983

Every Thursday at 1 P.M.

HAY, STRAW & GRAIN

Sold on Commission

10 miles east of Lancaster, 8 miles west of Coatesville on Rt. 30, Paradise, PA.

L. Robert Frame, Manager

For information

717-442-4181

215-458-8518

LOUIS LYONS & SON

Consign your cattle and hogs, feeder pigs & calves to Louis Lyons & Son. They offer choice service, excellent sorting & marketing of your livestock.

Charles Diller, Manager

Phone 394-7915

Burnell Siegrist - Buyer & Seller

Phone 626-8653

Experienced
Personnel

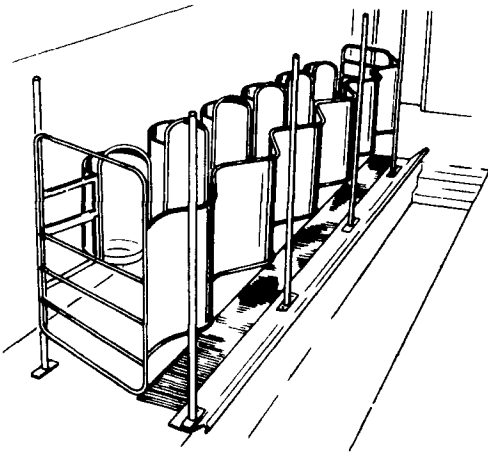
Immediate
Weighing

WESTFALIA

SYSTEMAT

Westfalia's Answer To More Profitable Milking

The "44" Herringbone Parlor Stalls



DESIGNED FOR:

- Better cow comfort
- Improved cow flow
- Greater operator convenience
- Easy installation

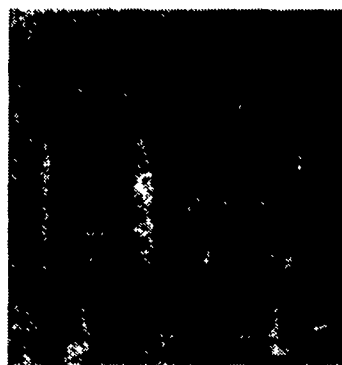
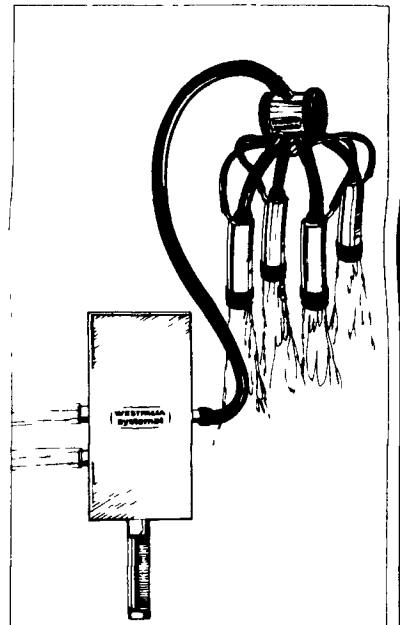
Constructed of hot dipped galvanized tubing with stainless steel managers.

Both entrance and exit gates are hinged on easy open/easy close DELRIN bushings. These no-grease bushings are designed for tough wear, long life and no-hassle operation.

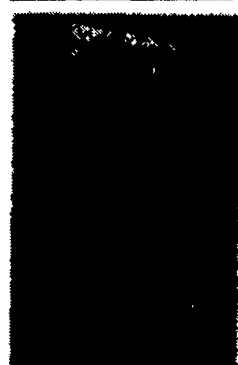
WESTFALIA Backflush Systems

An effective aide for prevention and control of mastitis.

Yes! Westfalia's Backflush, with automatic control, will sanitize your milker units between cows. It's fully automatic for group or individual systems. Works well in any type of milking parlor or milking flat barn operation. Make Westfalia an integral part of your herd sanitation program.



Backflush Control Panel



Backflush Valve

Visit Your Local Westfalia Sales Center Today

BALLY

Longacre Electric
Service, Inc.
Larry Hughes
215-845-2261

BELLEVILLE

Byler's Diesel &
Refrig. Service
Daniel Byler
717-483-6446
Answering Service

BRICKERVILLE

Agri-Tek
Eugene Krall
717-627-3000

CHAMBERSBURG

Cumberland Farm &
Dairy Supply, Inc.
Larry Hughes
Gary Walton, Sales Mgr.
717-263-0826

COCHRANVILLE

Farm Construction &
Equipment
Robert L. Janney
215-593-2365

HAMBURG

Shartleville Farm Service
Daniel & Dale Wenger
215-488-1025

JERSEY SHORE

Tom L. Dunlap
717-398-1391

KIRKWOOD

Elam S. Stoltzfus
717-529-2623
717-529-2668
Answering Service

LITITZ

Fisher & Thompson Assoc.
Amos Fisher
Rick Thompson
717-627-1530

MERCER-NEW WILMINGTON

Chuck Meese, Inc.
412-533-3077

MIFFLINBURG

Wehr's Dairy Equipment
Mark Wehr
717-966-1396

MT. BETHEL

K.C. Dairy Service
Kevin Correll
717-897-5141

PARADISE

Lloyd Ranck
717-687-6361

REBERSBURG

Tim's Diesel Service
Tim Stoltzfus
814-349-5110
Answering Service

SPARTANSBURG

Brenner Dairy Equipment
Albert Brenner
814-654-7309

TROY

Dairyland Sales & Service
Jim Kolley
717-297-4128

SYKESVILLE, MD

Dairyman Inc.
Mid-Atlantic Division
William Stauffer
301-795-2727
301-781-7020

REGIONAL MANAGER

NY, PA, NJ, CT,
MA, VT, RI, ME, NH
ROBERT E. TURNER
R.D. #1, Box 11
Aspers, PA 17304
717-677-9301

SALES ENGINEER

NORTHWEST PA & NY
TOM MOORE
28 Petrolia St.
Bradford, PA 16702
814-362-3933

NATIONAL HEADQUARTERS

WESTFALIA SYSTEMAT
DIVISION OF CENTRICO
1862 Brummel Dr.
Elk Grove, Ill 60007
1-800-323-6723