

REAL ESTATE

REAL ESTATE

**PENNA FARMS  
CUMBERLAND CO.**

87 acre dairy, 28 tie stall barn w/40x40 addition large heifer barn, silo, pole building 40x66, road frontage 3 bedroom frame dwelling, a good starter farm  
127 acre general, 102 crop acres, bank barn, frame dwelling, needs repaired PRICE ADJUSTED \$109,900

**FRANKLIN COUNTY**

130 acre dairy, limestone soil, 38 stanchions, pipeline milkers, 1000 gal bulk tank, (2) 40x70 pole barns, barn hay elevator, 2 bale conveyors, 2 large corn cribs, stable cleaner, 3 bedroom stone dwelling, road frontage, 40 adjoining acres available

Charles Wenger, GRI, 263-0945  
George Ebener 249-4979  
Wilbert Diehl 258-3231

**GEORGE L. EBENER & ASSOCIATES REALTORS**  
139 W. High St., Carlisle, Pa.  
Ph. (717) 243-6195

**HAVE YOU ALWAYS WANTED  
TO START FARMING?  
SEE ONE OF THESE GREAT BUYS!**

1440-K 64 A farm with large home, fair barn, land fertile (22 acres are creekflats) Great for truck farm, orchards, beef or sheep \$72,250  
1482-L 152 A farm, 70 A open, 62 A pasture, 20 A wood Solid 4 bedroom home with new siding, Ribstone silo with unloader Needs new barn erected Priced accordingly @ \$89,000  
1559-K 69 A, Turn Key Farm, with 54 tie stall barn, 45 A tillable, machinery and livestock included - large farm house \$155,000  
1475-L 150 A farm with 130 tillable acres 50x80 barn with 63 tie stalls heifer barn and machinery shed 2 bulk tanks - 3 bedroom home \$180,000



**JACKSON REAL ESTATE**  
RD #2  
Wysox, Pennsylvania 18854  
(717) 265-2100

**FARMS AND LAND FOR SALE**

**ADAMS COUNTY** 57 Acres, productive, tillable soil, pond, bank barn, hog pen, road frontage, double garage, 4 bedroom house \$140,000  
**CUMBERLAND COUNTY** 88 acres with woods and never failing stream, 66 acres tillable, bank barn, outbuildings, 4 bedroom house, secluded but close to Carlisle. \$135,000  
**HUNTINGDON COUNTY** approximately 69 acres, stream and 5 acre pond, stocked with cat fish, bass, sunfish... some beavers, near Raystown Dam.. ideal to build a weekend retreat. \$65,000  
**CUMBERLAND COUNTY** here's a super farm, 66 acres, private yet close to town, includes farm house, barn, weld shop, silo, property borders creek... has lots of possibilities. \$150,000.  
**CUMBERLAND COUNTY - HAMPDEN TOWNSHIP** Zoned Residential, 25 acres, tree lined acreage, offered at \$200,000.  
**CUMBERLAND COUNTY** 64 acre farm, approximately 50 acres tillable, 325 fruit trees, pond, 4 bedroom, bath, aluminum siding house, large bank barn, rental mobile home, 5 stall horse barn... beautiful view. \$129,000  
**PERRY COUNTY** prime hunting country, secluded 30 acres heavily wooded area. Sits up on Ridge. Ideal for weekend retreat. \$32,000.



**ERA COLONIAL  
REALTY**  
26 West High Street  
Carlisle, Pa 17013  
249-7700 766-2320

**ATTENTION LAND  
OWNERS IN LEHIGH  
AND BERKS COUNTY**

Now is the time to make arrangements to lease your farm land for spring 1984.

**Rothrock Golden  
Holstein Farm**  
215-756-6611

**WIMPLE REALTORS  
STATEWIDE FARMS  
EAST/CENTRAL NEW YORK**

**MOHAWK VALLEY FAMILY FARM:** 186 acres, 165 tillable, lrg stream thru Barn has 48 stalls, NEW milkhouse, wing for 30 heifers, 18x45 silo w/new unloader, machine shed Green Revival home, new heating system INCLUDES 37 milkers, 15 YS, 3 tractors and all machinery for \$248,000 with offers wanted CALL WIMPLE'S SLOANSVILLE OFFICE 518-875-6355

**CENTRAL NEW YORK**

"OLD WORLD NEATNESS" enhances this 212 acre dairy with extra-nice setting & well-maintained buildings Barn has 46 stalls 2" Boumatic pipeline unloading silo cleaner Home with colonial lines is also immaculate INCLUDES 38 milkers, 4 tractors and the cleanest machinery you'll find anywhere Retiring owner proudly offers at \$220,000 with \$60,000 down CALL WIMPLE'S SLOANSVILLE OFFICE 518-875-6355

**COOPERSTOWN AREA**

**OTSEGO COUNTY'S BEST SOILS** on this 200 acre Honeyoye farm with 140 tillable and picturebook setting on maple-lined lane Barn milks 62 on 2" pipeline, has Patz cleaner, 2 silos, 20-25 heifer stalls, 1816 colonial home plus mobile home If you're looking for high-calibre land, this is it JUST LISTED! Widow offers at \$149,000 with very liberal terms CALL WIMPLE'S SLOANSVILLE OFFICE 518-875-6355

**NORTHCENTRAL, PA.  
FARMS &  
INVESTMENTS**

Priced To Sell Priced To Sell

**250 +- ACRE DAIRY FARM**  
Approx. 180 tillable. 66 tie stall barn in 3 rows. Pipeline w/800 gal. bulk tank. 20x60 silo w/unloader. Mow conveyor. Heifer barn and machinery shed. Remodeled 4 bedroom home. Approx. \$130,000 of existing FLB & FHA farm loans. Fall possession. Priced right at \$165,000. M-603.  
**BEEF/HORSE FARM**  
The gentleman farmer or year round operation. 128+ acres with good barns and 3 bedroom house. Pretty setting. Lots of hay ground, much more. \$65,000 with terms. Approx. 7 miles into N.Y. M-578  
**72 COW DAIRY FARM**  
50 tie stalls, 1 pipeline with 22 ready to hook on, additional 20 heifer stalls, 20x60 and 60x50 silos with unloaders. Approx. 188 acres all but 40 tillable or pasture, pole barn and shop machinery shed, totally remodeled 5 bedroom home. Existing FHA 5% loan for \$95,000. Priced at \$179,500. M-532. PH: 717-662-2138.  
Over ¼ million gross, small town grocery store, stocked and equipped, 4 bedrooms 2 baths, apartment above. Reduced to \$125,000. #1950-T PH: 717-265-3171 or 717-265-8903  
Hunting ground. With owner financing, near game lands. 82 acres for \$45,000, also 47 for \$25,000. PH: 717-265-3171 or 717-265-8903



Offices: Area Code - 717  
Tioga, Potter & Bradford Counties call or write  
MANSFIELD, RD 1, Box 41 662-2138  
TOWANDA, Bridge St 265-3171  
OUR #1 AIM IS SERVICE

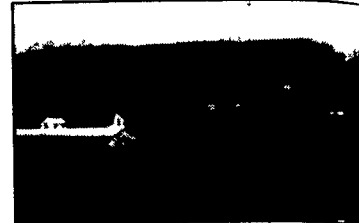


**WILLOW SPRINGS**

838 Acres Between Lexington and Staunton Cattle breeding/steer feeding operation with 200 cow/calf capacity at Brownsburg. Automatic feeding systems with two 600 ton silos & covered bunkers 18 ft grain bin and dryer sheep barn machine shed Modern 2 story brick home on ridge overlooks valley Two tenant houses Numerous springs branches plus 3 acre lake \$835 000

**LITTLE RIVER**

383 Acres River bottom farm between Lexington and Staunton with approximately 220 acres in open and improved pasture and cropland Two feeding barns with attached sheds granary and shed two silos scales kennel and other miscellaneous equipment and farm buildings A fine 8 yr old brick residence overlooks farm and surrounding game filled mountains \$375 000



**SPRING BRANCH**

197 Acres A well maintained Valley farm near Lexington with an unusually fine balance of pasture hayfields and cropland in 101 acres the remaining acreage in hardwood forest Spring Branch flows through the center of the farm The eight room farm house is surrounded by maples Large barn granary and several out buildings \$167 000

CONTACT FOR FURTHER INFORMATION AND FREE CATALOG

**G. Otis Mead, III**  
Accredited Farm and Land Broker  
Evening:  
703/463-2740

**MEAD  
ASSOCIATES**

**James W. Moore**  
Accredited Farm and Land Broker  
Evening:  
703/463-7050

21 North Main Street, Lexington, Virginia 24450 Telephone 703/463-7168



**SELLING YOUR FARM?  
Auction or Brokerage?**

It is your option when you call us. We will explain both plans and then you choose. No obligation.

**SANFORD G. LEAMAN**  
Assoc. Broker & Auctioneer

**BERKS CO** 150 ac modern dairy 2 lg silos lg new imple shed, farrow house, lg stone farm house, 2nd set of bldgs w/stone farmhouse  
**NEW LISTING**  
**NORTHUMBERLAND CO** 200 plus ac modern dairy farm, capacity for 185 cows, 12 unit milking stable with automatic take off, 2 sets of buildings, high state of cultivation One of the most beautiful farms in Northumberland County Call for details  
**SNYDER CO** 72 ac general farm or produce truck farm large brick house, barn, silo etc Priced for quick sale with February possession

**ADAMS COUNTY**  
75 ac 55 cow comfort stall w/pipeline 20' x 70' silo, pond 5 bedroom home  
**YORK COUNTY**  
Restored farmhouse bankbarn w/sheep pens & housing 53 ac total w/30+ tillable, lg spring fed pond  
**DAUPHIN COUNTY**  
54 ac w/36,000 broiler operation could be layers w/cages farrowing pens in bankbarn Good horse farm possible  
**LANCASTER COUNTY**  
42 ac w/creek frontage for irrigation bankbarn tobacco shed, ideal as a produce farm  
114 ac w/modern free stall barn 12 cow milk parlor, 2 Harvestores & 2 stave silos, lg pond, rented ground nearby, ranch home and more  
**LYCOMING COUNTY**  
24' x 70' silo, 66 comfort stall bank barn, impl shed, 284 ac w/160+ tillable 2 5 bedroom houses, priced rite  
**UNION COUNTY**  
120 ac beef farm, lg bankbarn, grain bins, frame home, dairy poss Owner fin  
75 ac w/102 free stalls, 10 cow strip milk stable w/pipeline, partially remodeled home, impl shed, plenty of rented land nearby  
230+ ac modern dairy barn cleaner, pipeline, lg brick home, modern out bldgs, owner fin in Mennonite area  
120 ac free housing dairy could be comfort stall barn lg modern home  
**PERRY COUNTY**  
Amish area 68 ac no bldgs Bldgs and additional land rent poss Bldgs set up for dairy  
57 ac Amish area, barn, woodland and approx 40 ac tillable  
**MIFFLIN COUNTY**  
15 ac with cabin, furniture, BEAR DEER & TURKEY Good hunting  
**CUMBERLAND COUNTY**  
75 ac dairy, limestone soil, modern farmhouse, Morgan free stall barn w/bunkfeeder, Mennonite area  
60 ac w/bankbarn, trench & stave silos Level land no rocks dairy/steers  
89 ac farm, beef and hog opporation Large 2 family brick dwelling, plus other buildings Just reduced  
**NORTHUMBERLAND COUNTY**  
83 ac dairy, retail shop, 2 dwellings, Amish and Mennonite area Excellent soil  
42 ac dairy or steer farm w/lg bankbarn, 1 high moisture silo, 1 reg w/bunkfeeders brick dwelling In Mennonite & Amish areas  
**SNYDER COUNTY**  
110 ac dairy, barn cleaner 29 stanchions lg brick home, in Amish area Limestone soil  
If you are thinking of buying or selling a farm or farmland call Sandy today He will be glad to serve you in any county



**HIGH REALTY CORP.**  
1837 William Penn Way  
Lancaster, Pa. 17601  
717-569-4264  
A High Industries, Inc. Company