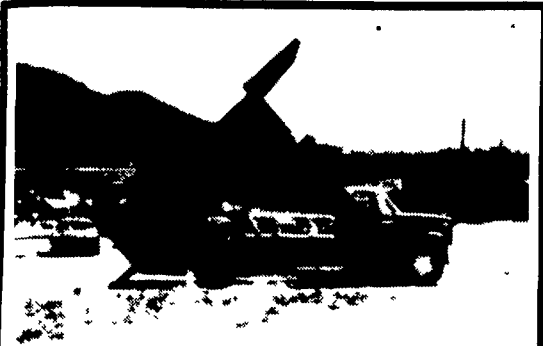


TRUCKS & TRAILERS

1969 D 1000 Dodge truck, 250 Cummins, recent overhaul, 10 speed Road Ranger, tandem axle, air condition and PS; 717-949-3074.

For Sale - 1963 GMC 6000, cab over, p.s., air brakes, with nine foot Stoltzfus lime body with booms, 32,000 GVW call 301-791-0020.



'74 C-60 Chev 14' Dump, 75,000 mi., new 900 tires, rear 4 speed 2 speed \$6,500 Will trade.

SNYDER'S AUTO SALES
Bellefonte, Center Co., Pa.
814-355-9396 Anytime

TRUCKS & TRAILERS

1979 Ford F100, V8, ps, 3 speed, 40,000 miles, clean, \$3495, 717-733-4422. Dealer.

For Sale - 9', 10', 19' & 20' wooden livestock bodies. 20' Morgan van body. 20' van body. M.H. Eby, Inc., Blue Ball 717-354-4971.

STORAGE TRAILERS AND OFFICE TRAILERS for rent, economical, delivered. 301-771-4529.

TRUCKS & TRAILERS

For Sale - 1974 city 26 foot aluminum dump trailer. 10.00x26 radial tires. Very good condition, \$8500. Adams County. 717-677-7775 evenings.

For Sale
64 Chevy 21,000 GVW, 43,000 miles
70 Chevy 17,000 GVW, 19,685 miles no rust
717-225-3616

TRUCKS & TRAILERS

Wanted - Trucks and Storage trailers. We also buy trucks for parts and truck parts, motors, trans. and rears. Gas or diesel. Berks Co. 215-944-9871.

1974 IH CAB OVER 4070A, 13 SPEED TRANSMISSION, 318 DETROIT DIESEL, PS, SLIDING 5th WHEEL, GOOD RADIAL TIRES
215-286-9510

SPECIAL ON ALL USED CARS & TRUCKS FALL CLEARANCE SAVE UP TO \$1000 OFF REGULAR PRICE

We Must Make Room For More Trade-Ins

PETTICOFFER DODGE, INC.

Route 230 East Next to Shopping Center
Elizabethtown, PA
PHONE 717-367-1808

MIKE RHODES & CO.

"THE TRUCK PEOPLE"

Rt. 663 & Swamp Pike, Gilbertsville, Pa.

Area Code 717 or 215 Call Toll Free
1-800-362-7655
or 215-327-1380

PICK-UPS

- 1982 Chevy Luv, 4 Cyl., Diesel, 5 Speed, PB, AM-FM Radio, 42 Miles \$7995
- 1981 GMC Sierra 305, V8, Auto., PS, PB, AM-FM, Chrome Rails, 2 Tone Red & White \$7495
- 1981 Ford F100 Custom, 300 6-Cyl., 3 Spd. with Overdrive, PS, AM Radio \$6995
- 1980 Ford F100 Ranger XLT, Short Bed Step Side, 302 V8, Auto., PS, PB, AM-FM Stereo, 2 Tone Paint \$7495
- 1980 Chevy C10 Custom, 4.1 6-Cyl., 3 Speed, PS, PB, AM-FM & Cassette, only 8,000 Miles, Like New \$6995
- 1979 Ford F150, Explorer Package, V8, Auto., PS, PB, Tilt, Wheel, Cap \$5995
- 1979 Chevy C10 Bonanza, 305 V8, Auto., AM-FM, Tilt Wheel, PS, PB, 2 Tone Yellow & White, Only 21,000 Miles \$6995
- 1979 Datsun, 4 Cyl., 4 Speed, AM-FM, 30,000 Miles \$4695
- 1979 Plymouth Arrow Sport, 4 Cyl., Auto., AM-FM Aluminum Cap \$4895
- 1977 Ford F150 Custom, 351 V8, 4 Speed, PS, PB, AM-FM & 8-Track \$4495
- 1976 Chevy LUV, 4 Cyl., Auto., AM Radio, Cap, Only 48,000 Miles, Very Clean ... \$2995
- 1975 Chevy C-30, Dual Wheel Pickup, 350 V8, Auto., PS, PB, AM-FM, 55,000 Miles, Nice Truck \$5995

STAKE BODY

- 1978 F350 12' Stake, Dual Wheel, 10,000 GVW, 351 V8, 4 Speed, PS, PB, Rebuilt Motor, New Clutch & Pressure Plate \$6995
- 1973 GMC 500 Stake Body, 350 V8, New Short Block, 4 Spds., PS, 18,500 GVW, 12' Body \$3995

4 WHEEL DRIVES

- 1984 Ford Bronco XLT (New!), 302 V8, PS, PB, Air Cond., AM-FM & Cassette, Privacy Glass, Lockout Hubs, Tilt Wheel, Cruise Control, Rr. Defogger, 2 Tone Blue & Silver \$16,900
- 1983 Ford F150 Explorer, 302 V8, Auto., PS, PB, Lockout Hubs, 2 Tone Paint, Like New, 4,000 Miles \$12,900
- 1982 Datsun, 4x4, 4 cyl., 4 Speed, PS, PB \$7995
- 1982 Bronco Custom, 6 Cyl., 4 Speed, Lockout Hubs, PS, PB \$11,900
- 1981 Jeep Scrambler, 6 cyl., Auto., PS, Roll Bar \$8995
- 1980 Chevy Longbed, V8, Auto., PS, PB, Lockout Hubs \$8695
- 1980 Chevy Shortbed, 4 Speed, PS, Lockout Hubs, Dual Tanks, Hvy. Duty Front Springs \$8995
- 1979 Dodge Ram Charger, 318, V8, Auto., PS, PB \$6995
- 1978 Chevy Blazer, 350 V8, 4 Speed, PS, PB, AM Radio ... \$6995
- 1978 Ford F250 Crew Cab, 351 V8, Auto., PS, PB, AM Radio, Lockout Hubs, Tonneau Cover, 48,000 Miles \$7995
- 1977 Chevy Shortbed, 2 Tone Paint, 4x4, Auto., Sharp Truck \$7995
- 1972 Chevy Suburban, 350 V8, Auto., PS, PB, Dual Air Cond., Runs Great! \$2995

UTILITY BODY

- 1980 Chevy C30, Dual Wheel, with Morreysville 10' Utility Body, 454 V8, 4 Spd., PS, PB, Dual Tanks, 10,000 GVW \$8995

VANS

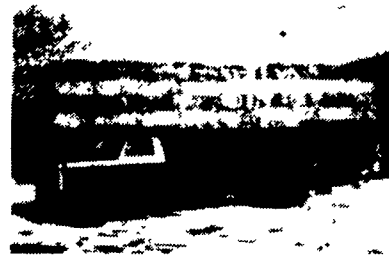
- 1982 Ford Van, 6 Cyl., Auto., PS \$8995
- 1979 Chevy Van, V8, Auto., PS, PB \$5995
- 1979 Dodge Window Van, V8, Auto., PS, PB, Tilt Wheel, Air Cond., Stereo \$7995

WE ARE NOW AUTHORIZED OLDSMOBILE DEALERS!

★ Long-Term Leasing Available ★

TRUCKS & TRAILERS

FOR SALE
1979 Ford extra heavy duty F-600, 361 engine, 5 speed trans., 10x22.5 tires, 21' box with deck over cab, 57,500 miles, like new condition.



717-324-2841

1978 International 1750, 466 diesel, 5&2 speed, PS, double frame, 10:00x20 tires, 187" wheel base, 28,000 GVW. 1979 International 1854 S model, 466 diesel, 5&2 speed, PS, double frame 236" wheel base, 27,080 GVW. 1978 International 1800, 446 V-8, 5&2 speed, PS, extra long frame, 254" wheel base, 28,080 GVW. 301-877-9889.

REAL ESTATE

2 Farms consisting of 120 acres of very fertile land, 2 sets of buildings for sale by the owner, John Strawbridge, 301-996-2022.

Farmette, 12.66 shares, for sale by owner. 717-259-9983.

Log cabin located in the mountains of Central Pennsylvania, excellent hunting and fishing available, located 3 miles northwest of Belleville, off Rt. 305 near Greenwood State Park. Two parcels of land included. One tract being of the dimensions of 75' x 101'. The other being 300' x 124'. Water available on property. Bids being accepted immediately. Mail bids and inquiry to Archie D. Stuck, 127 E. Main St., Belleville, PA 17004. Bids must be postmarked no later than Aug. 8, 1983. The owner reserves the right to reject any or all bids.

FRANKLIN COUNTY - dairy and general farms, Kuhns Real Estate, Inc., 717-597-8300. Roger Wildeson R.E.S., 717-263-5702.

For Sale - 15 acre hog farm, Nebraska hog house, 600 capacity, converted barn 320 capacity, also veal barn, 10 acres tillable, 1 acre woodland, 5 bedroom house, 4 car garage, Dauphin Co., near Hershey, 717-944-1007.

FARM for sale by owner: 155 acre valley from Penn Yan, NY. 90 acres tillable, tilled, excellent soil; 45 acres creek bottom (pasture or tillable if cleared); 10 acres hard maple/oak woodlot (gravity sugar bush); 10 acres spruce and brush; centered year round stream; road access. \$110,000 315-536-7296

Farm for rent - 40 acres, modern house, barn and work houses, Lancaster Co., 6 miles from Ephrata, 215-562-4820.

130 acre dairy farm for sale, Schaefferstown, Lebanon County, PA. 70 cow tie stall barn, 800 gal. bulk tank, 2 silos, 19th century stone farmhouse, 20 year owner financing at 10% interest to qualified buyers. Call Lee Reddinger, 1-717-949-2243. Suburban Realty, 717-273-9358.


Farm for sale by owner - 140 tillable acres, 40 acres wooded, good flat Klinesville soil, lots of frontage on hard road, Columbia Co., write to Lancaster Farming, PO Box 366-D94, Lititz, PA 17543.

Snyder County farm, 5 miles West of Sellinsgrove. 160 acres, \$160,000 or best offer. Ph. 901-642-6111.

Old Grist Mill and poultry house on 10 acres level land w/stream in Washington Township near Franklintown, York County. Mill built by the Quakers approx. 1740. Fronts on hicktop Bentz Mill Rd. Asking \$32,900. Call Charlie Wolgemuth at Jack Gaughen Realtor 717-534-1302. After office hours 717-534-1642.

For Sale - 67 acre farm, Berks Co., PA, 60 acres tillable, large house, barn, sheds, 1/2 acre pond, partial financing, private, 215-693-5624.

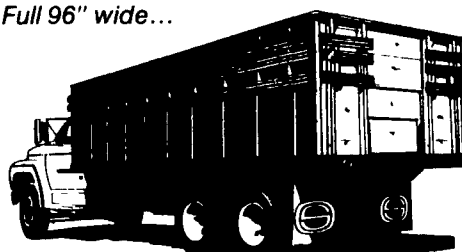
Farm and necessary machinery in Huntingdon County. Call 814-259-3469 call after 6 P.M. daily.



Grain & Livestock Bodies

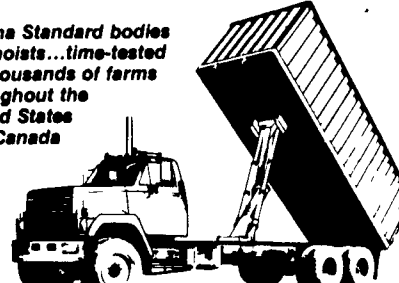
Bodies

Full 96" wide...



- One-piece roll formed steel sides with built-in tarp rail Available in 28', 40' and 52' extra capacity heights All with maximum corrugation for maximum strength
- 40" 48" and 54" hardwood sides available the truck body Omaha Standard built its reputation on
- Maximum legal width of 96" means more payload
- The toughest platform in the business — laminated wood smooth steel, treadplate or steel over wood
- Easy-conversion fold down stock racks
- A full line of rugged gates — engineered to make your job easier
- Twelve conversion hoist models — scissors or stabilized Olympic telescopic
- Also available Omaha Standard stakeless steel grain bodies aluminum grain bodies and grain pup trailers

Omaha Standard bodies and hoists...time-tested on thousands of farms throughout the United States and Canada



FARMERSVILLE EQUIPMENT INC.

RD 4, East Farmersville Road
Ephrata, PA 17522
Located in the Village of Farmersville,
Lancaster County
717-354-4271

Omaha Standard