

Livestock market and auction news

New Wilmington Livestock

New Wilmington, Pa.
Monday, December 5
Report supplied by PDA

CATTLE 285. Compared with the market two weeks ago: Slaughter cows fully \$2 lower. Once Choice slaughter steer at 58.50, few Good 53.00-58.00, Standard 48.00-53.25. One Choice slaughter heifer at 54.50, few Good 50.25-52.25, few Standard 44.00-48.00. Utility & Commercial slaughter cows 34.00-37.25, few 38.25-40.25, Cutters 32.00-35.00, Canner & Low Cutters 24.00-32.00, Shells down to 15.00. Yield Grade #1-2 1030-1875 lbs. slaughter bulls 38.00-45.00.

FEEDER CATTLE: Medium & Large Frame #1 315-550 lbs. feeder steers 48.00-55.50. Medium & Large Frame #1 360-500 lbs. feeder heifers 42.00-51.25, 515-685 lbs. 38.50-48.00.

CALVES 366. Vealers \$2.00-\$5.00 lower. Couple Prime vealers 93.00 & 97.50, few Choice 76.00-89.00, few Good 62.50-77.50, Standard & Good 120-140 lbs. 50.00-55.00, 90-120 lbs. 46.00-51.00; 65-85 lbs. 30.00-48.00; Utility 50-85 lbs. 10.00-30.00.

FARM CALVES: Holstein Bulls 95-135 lbs. 50.00-72.00; Hol. Heifers 90-130 lbs. 48.00-50.00.

HOGS 670. Barrows & gilts .75-1.00 lower. US No. 1-2 210-250 lbs. barrows and gilts 41.50-43.00, No. 1-3 2-260 lbs. 40.50-41.85, No. 2-3 235-270 lbs. 38.50-39.85, No. 1-3 175-195 lbs. 35.00-40.50. Sows strong to \$1.00 higher. US No. 1-3 320-620 lbs. sows 30.00-38.00, few 40.50, No. 1-3 250-310 lbs. 28.00-32.00. **BOARS 26.50-28.50.**

FEEDER PIGS 63. US No. 1-2 30-35 lbs. feeder pigs 18.00-19.00 per head, No. 1-3 20-35 lbs. 5.00-15.00 per head.

SHEEP 98. Choice & Prime 65-85 lbs. wooled slaughter lambs 60.00-63.00, Choice 90-120 lbs. 50.00-58.00, Good 50-90 lbs. 40.00-46.00. Slaughter ewes 5.00-16.00.

Peoria Cattle

Thursday, December 8
Report supplied by USDA

Compared to last week Slaughter Steers and Heifers 1.00 to 2.00 lower, instances 3.00 lower on Heifers. Cows 2.00 to 5.00 lower. Bulls 2.00 lower, but untested at Midweek. Trade opened the week slow with buyers adjusting bids

after last weeks winter storm conditions. Live prices followed the downward trend noted in wholesale beef channels with all decline noted early in the week. Majority of supply Good to Choice Steers and Heifers with 11% Cows. Receipts this week about 2100 compared to 2956 a week ago and 3289 a year ago.

SLAUGHTER STEERS: Choice 2-4 950-1250 lbs. 59.00-61.50, load 1130 lbs. 62.00. 3-4 58.00-60.00, part load 1145 lbs. Carrying mud 57.00. Mixed Good and Choice 2-3 950-1150 lbs. 57.50-59.00. Good 54.00-57.50. Holsteins: Good to Choice 1-3 1100-1200 lbs. 49.00-52.00.

SLAUGHTER HEIFERS: Choice 2-4 925-1100 lbs. 58.00-59.50, few 57.00-58.00 Good and Choice 2-3 and Choice 3-4 850-1100 lbs. 56.00-58.00. Good 54.00-56.50.

COWS: Breaking Utility and Commercial 2-4 30.00-33.00. Cutter and Boning Utility 1-3 30.00-33.50; Canner and Low Cutter 1-2 24.00-31.00.

BULLS: YG 1-2 1200-1700 lbs. 39.00-42.00.

Joliet Cattle

Thursday, December 8

CATTLE: Friday through Wednesday's salable receipts 2750; 5 days last week 3493; same period a year ago 4534. Trading slow to moderate for the week. Slaughter steers ended the week steady to 1.50 lower, mostly 50 to 1.00 lower compared with Wednesday of last week. Slaughter heifers ended the week 50 to 1.00 lower. Cows closed the week 2.00-4.00 lower.

SLAUGHTER STEERS: Choice few Prime 3-4 1200-1350# 62.00-62.50, 2 loads 63.50 Monday; load 64.00; Load 64.50 Wednesday. Choice 2-4 1050-1400# 59.50-62.00, load 62.25 Monday; 60.50-62.50 Wednesday. Mixed Good and Choice 2-3 950-1300# 58.00-59.50 Monday; 58.50-61.00 Wednesday. Choice 2-3 1200-1325# Holsteins 50.00-52.00 Monday.

SLAUGHTER HEIFERS: Choice few Prime 2-4 950-1100# 60.00, load and package 60.25 Monday. Choice 2-4 900-1100# 57.50-60.00 Monday; 59.50-61.00 Wednesday. Mixed Good and Choice 2-3 800-1000# 55.50-57.50 Monday; 57.50-59.00 Wednesday.

COWS: Breaking Utility and Commercial 29.00-32.00.

New Holland Dairy

New Holland Sales Stables

Wednesday, December 7

Report supplied by auction
Reported receipts of 104 cows, 85 heifers, and 16 bulls.

Market steady.

Load of PA Fresh cows 625.00-975.00.

Load of Franklin Co. Fresh cows 700.00-925.00; springers 575.00-1125.00.

Load of PA Fresh cows 685.00-1025.00.

Load of PA Fresh cows 625.00-1300.00.

Load of PA Fresh cows 625.00-875.00.

Load of NY Fresh cows 470.00-850.00.

Load of Canada Fresh cows 505.00-1075.00; springers 750.00-1200.00.

Locally consigned cows 340.00-900.00.

Springing heifers 540.00-800.00.

Purebred 750.00-1085.00.

Open heifers 220.00-460.00.

Bulls 300.00-680.00.

FEEDING HIGH MOISTURE CORN?

Agway HMC Balancer™ has the extra nutrients cows need for extra production



Feeding high moisture corn may cut costs and even boost profits . . . in the short run. True, it's energy rich. But high moisture corn is seriously deficient in protein, vitamins and minerals. And it just doesn't pay to skimp on those nutrients.

Make the choice hundreds of smart farmers have made: Agway HMC Balancer, the Pro:Right® concentrate specifically designed to supplement high moisture corn with the nutrients your herd needs for maximum and efficient milk production.

Agway HMC Balancer contains 32% protein precisely formulated to regulate* the

amount of *both* soluble and insoluble protein. Also included are the critical vitamins and minerals your herd needs to stay healthy and productive.

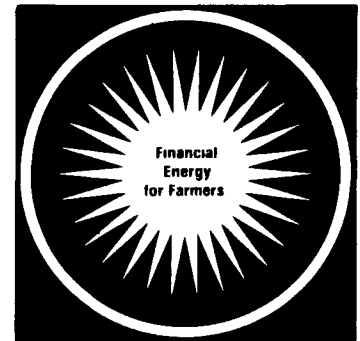
No wonder use of Agway HMC Balancer has increased 800% in just the past five years!

Agway also offers many other concentrates that enhance a variety of forage programs. For more information, see your Agway Dairy Enterprise Salesperson, or call your local Agway.

*U.S. Patent 4,118,513

Working for people who work the land

FARM
ENTERPRISE
SERVICE

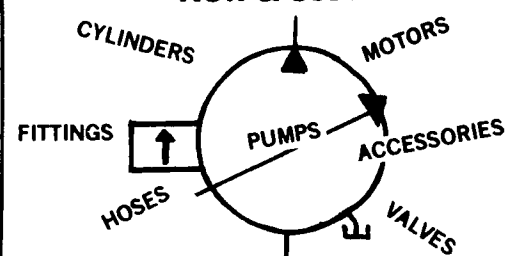


FARMERS AgCREDIT

CORP.
9 East Main Street, Lititz, PA 1717-626-4721



HYDRAULICS New & Used



FREE GIFT GIVEAWAY

#1 Rockford 5 Speed Bench Model Drill Press

#2 Your Choice of Air Tool - Sander, Grinder or Drill

#3 2 Ton Power Pull

- One Ticket Per \$100 Purchase -
All customers will receive at least one ticket per purchase.

DRAWING DEC. 23rd

Also 10% DISCOUNT On All Counter Sales Thru December

**BEILER
HYDRA-MATICS**

Hydraulic & Air Supplies
Box 587 R.D. 3 New Holland, PA 17557
(717) 656-2846