

Blair Co. DHIA

(Continued from Page D24)

| | | | | | |
|-------------------|----|------|--------|----|------|
| C Eugene Smith | | | | | |
| 26 | GH | 4-5 | 19,998 | 40 | 791 |
| 43 | RH | 4-2 | 21,167 | 36 | 757 |
| 14 | GH | 3-0 | 18,831 | 40 | 753 |
| 5 | GH | 3-1 | 18,056 | 42 | 759 |
| Jay Metzker | | | | | |
| Lou | RH | 5-8 | 22,299 | 42 | 946 |
| William R England | | | | | |
| 46A | GH | 9-9 | 21,831 | 37 | 797 |
| 3C | RH | 6-1 | 23,529 | 39 | 907 |
| 36C | GH | 5-7 | 23,870 | 38 | 915 |
| 37D | GH | 3-11 | 17,881 | 43 | 771 |
| Donald G Hoover | | | | | |
| Raquel | RH | 8-7 | 23,940 | 32 | 766 |
| Ellen | RH | 6-1 | 21,420 | 40 | 848 |
| 61-H | RH | 4-5 | 19,898 | 41 | 821 |
| Prunie | RH | 4-1 | 19,008 | 40 | 758 |
| Aldon-Acres | | | | | |
| Cora | RH | 7-7 | 16,850 | 49 | 821 |
| L Brooke | RH | 5-4 | 20,724 | 37 | 761 |
| Elwood H Stitt | | | | | |
| Jean | RH | 5-11 | 23,084 | 36 | 836 |
| Rodney L Metzler | | | | | |
| 127 | GH | 6-3 | 21,632 | 47 | 1016 |
| Lar Ann Farm | | | | | |
| Sunshine | RH | 5-2 | 18,398 | 45 | 837 |
| Josephine | RH | 5-6 | 19,636 | 41 | 799 |
| Jerry&Sandy Young | | | | | |
| 24 | GH | 5-7 | 22,378 | 36 | 815 |
| 28 | GH | 5-6 | 25,962 | 34 | 876 |
| Thomas W Kelly | | | | | |
| Jane | RH | 7-2 | 25,419 | 40 | 1011 |
| Julius Replogle | | | | | |
| Sara | GH | 8-6 | 21,210 | 36 | 758 |
| Walter Keller | | | | | |
| 244 | RH | 3-3 | 19,739 | 42 | 831 |

| | | | | | |
|------------------------|----|------|--------|----|-----|
| Charles&Mike Hoover | | | | | |
| Spirit | GH | 4-2 | 24,029 | 36 | 860 |
| Susie | GH | 4-1 | 22,482 | 35 | 780 |
| Sparkling Springs Farm | | | | | |
| 347 | GH | 4-2 | 20,404 | 42 | 859 |
| 50 | GH | 3-8 | 17,755 | 44 | 783 |
| 15 | GH | 3-1 | 19,754 | 43 | 855 |
| Revere Smith | | | | | |
| Sunny | GH | 6-5 | 23,078 | 37 | 863 |
| Penn-England | | | | | |
| Astria | RH | 6-4 | 20,979 | 42 | 873 |
| Byron&Randy Huntsman | | | | | |
| 42 | GH | 5-4 | 20,084 | 41 | 822 |
| James L Dauberman | | | | | |
| Wendy | RH | 4-9 | 22,336 | 40 | 894 |
| Mt. View Farm | | | | | |
| 25 | GH | 7-11 | 19,916 | 42 | 840 |
| Glen Albright | | | | | |
| 19 | GH | 3-11 | 21,083 | 39 | 832 |
| 21 | GH | 3-11 | 19,589 | 45 | 872 |
| Bradley Sollenberger | | | | | |
| Tee | GH | 3-2 | 22,329 | 34 | 758 |

JUNIATA COUNTY DHIA October Report

Records were calculated for 2,784 cows in 53 herds

Top Ten Rolling Herd Averages

| | | | | |
|--------------------|-----|------|--------|-----|
| John L Van Horn | 41H | 89.0 | 18,414 | 775 |
| Harold B Shearer | 38H | 86.2 | 19,718 | 755 |
| Mark L Zook | 52H | 89.1 | 19,857 | 751 |
| W Harshbarger&Sons | 42H | 89.4 | 18,545 | 739 |
| James C Graham | 32H | 83.1 | 19,280 | 739 |
| Larry&David Noss | 61H | 86.2 | 19,423 | 727 |
| Barry E Lucas | 39H | 84.3 | 18,551 | 723 |
| J William Peoples | 31H | 90.3 | 18,705 | 721 |
| Rick&Ralph Saner | 49H | 87.3 | 18,884 | 705 |
| Kenneth P Deamer | 53H | 87.1 | 19,197 | 700 |

Two hundred fifty six cows completed records of 305 days or less. Two of these cows produced over 1000 lbs. of butterfat; eight produced over 900 lbs., 16 produced over 800 lbs., 44 produced over 700 lbs., 54 produced over 600 lbs. and 64 produced over 500 lbs.

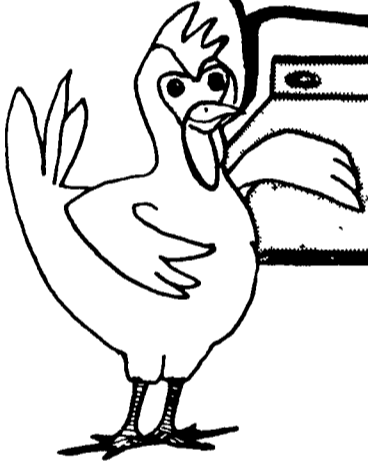
The fifteen high cows are listed below. The owner's name and address, cow's name, pounds milk and pounds butterfat are given in order.

| | | | | |
|----------------------|--|--------|-------|--|
| Grand Hope Farm | | | | |
| Voldair | | 23,935 | 1,026 | |
| 119 | | 22,534 | 879 | |
| John L Van Horn | | | | |
| Venus | | 21,429 | 1,006 | |
| Vickie | | 23,051 | 983 | |
| Jay Finkbinder | | | | |
| Vera | | 25,225 | 953 | |
| Harold B Shearer | | | | |
| Gail | | 21,544 | 931 | |
| Trixy | | 23,860 | 890 | |
| S F Metz | | | | |
| Vivian | | 21,121 | 930 | |
| Kay | | 22,016 | 854 | |
| Zimmerman Brothers | | | | |
| Buff | | 21,287 | 925 | |
| Orlyn Saner | | | | |
| Carla | | 19,721 | 925 | |
| Larry&David Noss | | | | |
| 38C | | 24,972 | 920 | |
| Glen B Simonton | | | | |
| 238 Trix | | 23,371 | 917 | |
| Freeburn&Norman Love | | | | |
| 150 | | 22,436 | 892 | |
| Delmar A Auker | | | | |
| 188 | | 24,622 | 870 | |



Juniata County DHIA Monthly Report

**PROVEN FACT... Our Dropping Boards
Are Now Being Used in Over
50 Poultry Operations...**



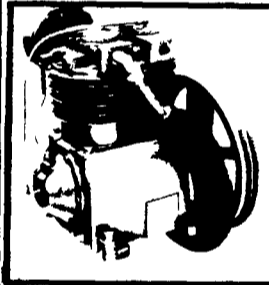
WHY???

- SUPERIOR QUALITY
- WILL NOT RUST OR CORRODE
- WILL NOT SAG OR CRACK
- PLASTIC IS A FULL 1/4" THICK
- AVAILABLE IN 8' AND 10' SECTIONS
- FITS MOST MAJOR CAGE SYSTEMS
- ALL NECESSARY HARDWARE AVAILABLE



BOX 218
EAST PETERSBURG, PA 17520
Phone 717-569-3296

Air Compressor Sales & Service



1/2 to 150 HP
Pacemaker
Curtis
Quincy
Service on
most other
makes
Air Tools
& Motors



Also Hydraulic Motors, Pumps, Cylinders, Filters
Hose & Fittings

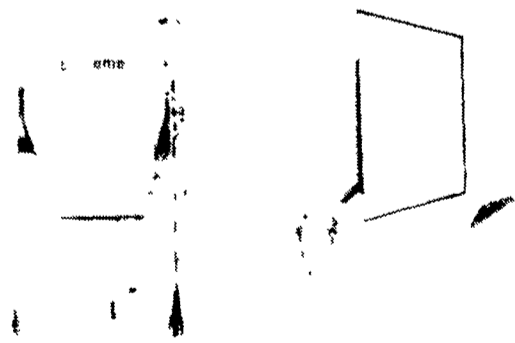
For All Your Air & Hydraulics Write To:

Elam S. Stoltzfus

RD 1 Box 94A Kirkwood, Pa. 17536

or call answering service 717-529-2668

Fiberdome INC ...made to last
P. O. Box 11 Lake Mills, WI 53551



Fiberdome Storage Bin



Fiberdome Forage Funnel



Fiberdome Feed Cart



Fiberdome Calfhutch

MADE TO LAST WITH FIBERGLASS — from FIBERDOME

Fiberglass is practically dent-proof. Stands up to long periods of hard use. Contents stay fresh because fiberglass absorbs little or no heat. Because there is very little condensation on the inside, moisture cannot alter the contents of material being stored. Fiberglass is rust resistant. Acids and salts can't hurt it.

Economical to Use • Simple to Install • Easy to Operate • Eliminates Dirty Chutes • Directs Flow of Feed • Saves Wear on Silo Chutes • Adapts to Any Make Silo

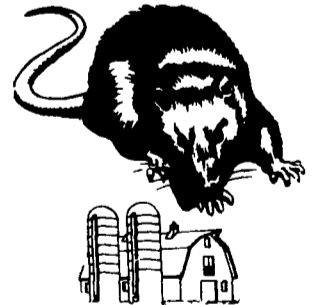
The only all fiberglass feed cart • Buff exterior white gel-coat interior • 14 bushel capacity (4.93 Hectoliter) • Immune to silage acids does not rust • Easy to load, unload and sanitize

Insulation value provides warmth in winter while remaining cool in summer • Hutches may be nested for compact storage • Hutches are easily moved by use of firmly imbedded I-bolts • Studies show respiratory problems, disease and calf mortality are reduced when hutches are properly used

Fiberdome Cattle Waterer
Get a cool, clean and constant water supply using no energy.

With the MIRAFOUNT Waterer from Fiberdome you'll have the finest operating, lowest cost energy and money saving livestock waterer on the market today. The thermal engineering and special design of the seal corks enables MIRAFOUNT to work in all kinds of weather.

**ATTENTION FARMERS...
FREE ESTIMATES ON RODENT CONTROL**



RODENTS carry diseases which can endanger the health of your dairy herds. Your business is raising them. Ours is protecting them.

We Specialize in Sanitizing And Disinfecting Poultry Houses



Since 1928
Pest control is too important to trust to anyone else

Lancaster, PA
397-3721

Lewistown, PA
248-0983

State College, PA
237-7607

DEVRIEZE FARM EQUIPMENT
Milanville, PA
717-729-7988

FARM BUREAU
Souderton, PA
215-723-4355
Mifflinburg, PA
717-966-1047

PHILLIPS FEED SERVICE INC.
Germansville, PA
215-767-3819
Bath, PA
215-837-6061

TERRE HILL SILO CO., INC.
Terre Hill, PA
215-445-6736

THOMAS DUNLAP
Rt. 220, Jersey Shore, PA
717-398-1391

JAMES L. GOOD
Sales & Service
Box 139B
Clarksburg, PA
412-459-8052

SOLLENBERGER SILO
Chambersburg, PA
717-264-9666

TROY AGWAY CO-OP, INC.
Troy, PA
717-297-2880