

CARTER Lumber

Your POLE BUILDING MATERIALS HEADQUARTERS

DIMENSION LUMBER ASSOCIATION GRADE STAMP	8'	10'	12'	14'	16'	18'	20'
	2"x4"	1.57	2.05	2.43	2.82	3.33	3.86
2"x6"	2.38	2.96	3.55	4.15	4.74	5.80	6.44
2"x8"	3.39	4.24	5.09	5.94	6.78	7.87	8.75
2"x10"	4.44	5.54	6.65	7.76	8.86	10.80	12.00
2"x12"	5.97	7.46	8.95	10.44	11.94	13.79	15.32

SQUARE BARN POLES Pressure Treated								
	10'	12'	14'	16'	18'	20'	22'	24'
4"x4"	6.25	7.69	8.65	9.35	—	—	—	—
4"x6"	—	11.55	13.49	15.79	18.95	22.55	—	—
6"x6"	—	17.79	20.75	24.19	30.35	34.89	41.75	46.45

FABRAL CORPORATION METAL ROOFING & SIDING

Custom Lengths Available at No Extra Charge

	— DOUBLE RIB —					
	GALVANIZED STEEL 29 GAUGE Width 32" Net	PAINTED STEEL 29 GAUGE Width 32" Net	ALUMINUM HI-STRENGTH ALLOY Width 48" Net	1 1/4" 29 GAUGE CORRUGATED GALVANIZED Width 24" Net	STRONG RIB ALUMINUM Width 36" Net	GRAND RIB HI GALVANIZED STEEL Width 36" Net
7'	7.03	—	—	4.85	—	7.65
8'	8.04	10.38	13.33	5.55	10.32	8.75
9'	9.04	—	—	6.24	—	9.85
10'	10.05	12.98	16.68	6.93	12.90	10.93
11'	11.05	—	—	—	—	12.02
12'	12.06	15.58	19.99	8.32	15.48	13.12
14'	14.07	18.17	23.33	9.70	18.06	15.30
16'	16.16	20.77	26.66	—	20.84	17.44
18'	—	—	29.99	—	23.21	—
20'	—	—	33.33	—	25.79	—

ALL-PURPOSE WAFERBOARD SHEATHING



• For Interior and Exterior Use.
7/16" x 4' x 8' SHEET...

\$6.99

NATIONAL BARN DOOR HARDWARE

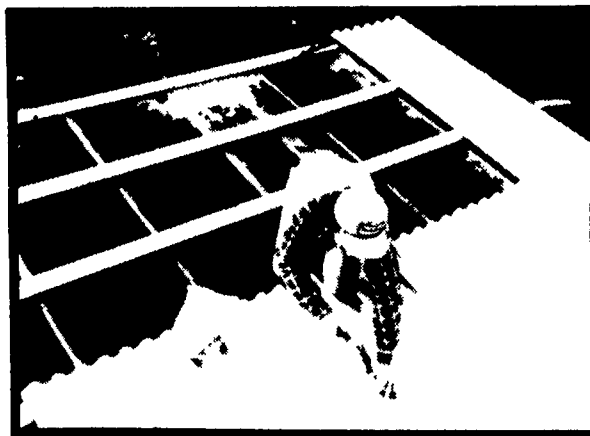
Carter Lumber stocks a broad line of quality controlled National hardware that gives years of trouble-free service.

BRACKETS #51F Single \$1.89 #51H Double \$6.39	DOOR HANGERS #1051 \$20.39 #1052R \$20.75 #1053 \$23.75	RAILS #5116 16 Gauge Box Type (per ft) \$1.79 #5100 (per ft) \$2.79 #59A Covered Trolley (per ft) \$3.39
DOOR PULLS #U6Z Extra Heavy \$1.39	DOOR BUMPERS #17 \$2.15	FLASHING #5120-10 \$14.65
LATCHES #V13B Door & Gate \$5.79 #1265 Sliding Door Jamb \$5.25 #V29A Thumb Latch \$7.45	STAY ROLLERS #13 Zinc \$3.35 #318 Galvanized \$5.79	

STYROFOAM TG
R-5.41 Insulation Value
1"x2"x8' T&G... **\$3.99**

STYROFOAM TG
Insulation
3/4"x2"x8'...T&G... **\$3.55**

IF YOU'RE THINKING OF RE-ROOFING, THINK QUICK



AND SAVE \$3.00 PER SQUARE

Onduline is growing famous as a re-roofing material. It's so lightweight, it goes right over your old roof, without having to tear old roofing off. It's also easy to install. And Onduline's strong, corrugated sheets are totally impregnated with asphalt. So they can't rust or corrode, ever. In fact, Onduline is backed by the industry's only lifetime limited warranty.

Best of all, now's the best time to buy Onduline. For a limited time only, you can put on Onduline and get back \$3.00 per square.

Hurry in and take advantage of this special rebate offer.

\$3.00 PER SQUARE REBATE DIRECT FROM ONDULINE.

Onduline
The Lifetime Roofing

6 Smooth Stock Colors
 BLACK BROWN RED
 GREEN SILVER WHITE
\$31.76 PER SQUARE

Reg. Price... \$9.29
SALE PRICE... \$8.69
 (Per Sheet)
YOUR PRICE

\$7.94
w/Company Rebate

OPEN 8:00 to 5:30
 SAT. 8:00 to 4:00
 6 DAYS A WEEK
 DELIVERY AVAILABLE



LANCASTER, PA. 2271 Old Phila. Pike, Rt. 340 East 717-397-4829	ELIZABETHTOWN, PA. Rt. 230 East 717-367-1886	CARLISLE, PA. 1840 Harrisburg Pike, US 11 717-245-0404	CHAMBERSBURG, PA. 2155 Wayne Road, Rt. 316 East 717-263-0822	NORTHUMBERLAND, PA. RD 1, US 11 North 717-473-8311	HARRISBURG, PA. 7365 Allentown Blvd. 717-545-4941
---	---	---	---	---	--

All Items Shown May Not Be In stock At All Locations