

Lancaster Holstein Assn. presents milk, fat awards

(Continued from Page A1)

John Barley owned the high two-year-old in milk, Spring-Belle Whirlhill Penny, with a record of 18,900 milk and 577 fat. He also owned the three-year-old which was high in both fat and milk. Star-Rock Monitor Majesty had 17,847 pounds of milk and 746 pounds of fat.

Thomas Barley won the fat award for his two-year-old, Star-Rock Elevation Mary Dee with a record of 14,880 milk and 674 fat.

Mark Welk owned the four-year-old winner in both milk and fat. MD-Greenside Jets Maiden won both categories with 18,077 pounds

of milk and 774 pounds of fat.

In the five years and over category Mark Welk's Straders Jet Delight won both the milk and fat divisions with a record of 19,178 milk and 711 fat in 286 days.

Elected to serve three year terms were Lamar Witmer, Manheim, outgoing president; Rich Hess, Strasburg; and Paul Welk, Peach Bottom. At the reorganization held following the banquet, Greg Landis was elected president of the Board and John Howard was elected vice president. Harold Shellenberger will serve as secretary and Gary Akers will serve as treasurer.

County Agent Glenn Shirk urged members to "work hard to produce a product worthy of promotion." He said diarmen have a responsibility to follow the product through to the end to make sure it is being handled properly. "I think the future's bright," Shirk concluded.

State Director Jay Landis told members there would be no membership card mailed to them this year, and said there is an increase in the price of individual memberships but not in the price per cow.

Doug Hershey, director of promotion for the state association, said the 1984 goal for Lancaster County would be 755 members.

Speaker for the evening was retired Lebanon County Agent Newton Bair, who took members on a slide tour through European countries he visited this summer. From lush farmland in France with high yields of wheat to high mountain farms in Switzerland, Bair related to the farmers the experiences of their counterparts in Europe. His group visited a 10th generation Simmental cattle breeder where they were hosted to lunch in a 250-year old log barn which had been spotlessly cleaned for the occasion.

The tour group observed hand methods of harvest necessary on the steep alpine slopes and the very modern dairies in Germany where animals are bred to American bulls to increase their milk production. He also explained the land reclamation projects in the Netherlands which allows farmers to farm and which was once under the sea. The value is returned over a long period of time.



Arlen Keener congratulates Tom Barley, center, and brother, Bob, on winning awards in the Lancaster Holstein junior milk and fat contest. Mark Welk was also a multiple winner, but was unable to attend banquet.



John Howard, right, chairman of the Conestoga Classic, presents a trophy to Dr. Donald Shellenberger, Leola, for consigning the high selling animal to the sale held in August.

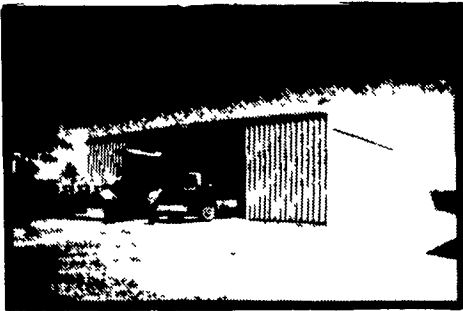


Board of the Lancaster Holstein Association includes, front row from the left, Greg Landis, president; John Howard, vice president; Harold Shellenberger, secretary; and Gary Akers, treasurer. Back row from the left, Loren Zimmerman, Lamar Witmer, Rick Hess, Jay Landis, state director, and Roger Mills. Absent was newly-elected director Paul Welk.

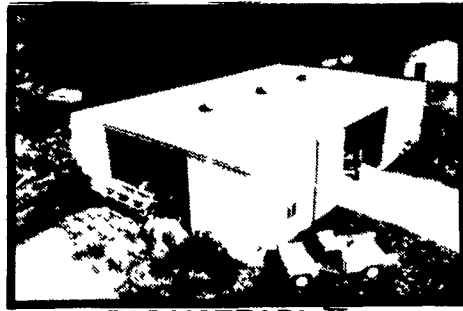


BUILDINGS for • TOWN & COUNTRY • FARM

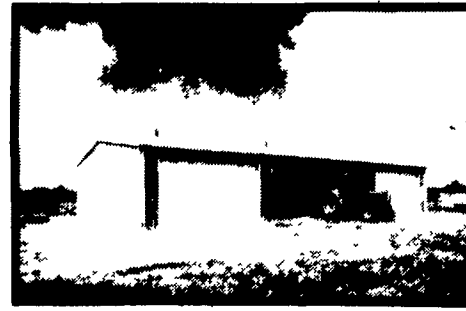
FREE COLOR



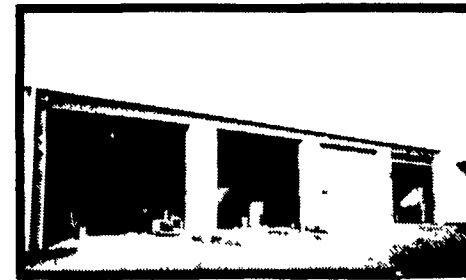
FARMSTEAD I



FARMSTEAD II



AG MASTER® 2:12



SHOP - STORAGE - GARAGE

**Buy It Right
Color It
FREE!***

- * **BUY IT RIGHT -**
You get color FREE.
- * **CHOOSE FROM A
BEAUTIFUL COLOR**

Bronze	White Sand
Desert Gold	Rustic Brown

- **SHELTER YOUR INVESTMENT
EQUIPMENT WITH
BUILDING**

Take advantage of all your tax credit.
* Color offer limited to side walls and trim.

PROGRAM ENDS MIDNIGHT

**NEW FROM
Full Line Of
Roll or B**
See Your Butler Dealer For All

BUY OR LEASE

Bethlehem 20 YEAR WARRANTY

KNOXVILLE CONSTRUCTION
Knoxville, PA 16928
PH: 814-326-4188

LEROY E. MYERS, INC.
Route #1, Box 163
Clear Spring, MD 21722
PH: 301-582-1552

D. E. SMITH, INC.
Mifflintown, PA 17059
PH: 717-436-2151

GOMPFF CONSTRUCTION CO. INC.
1841 Jerry's Road
Street, MD 21154
PH: 301-692-5350

FOUR COUNTIES CONTRACTOR
R.D., Box 249
Coalport, PA 16627
PH: 814-672-5751

C & M SALES INC.
R.D.#1
Honesdale, PA 18431
PH: 717-253-1612

NAZARETH BUILDING SYSTEMS, INC.
P.O. Box 47
Nazareth, PA 18064
PH: 215-759-1331

W.R. MOODY, CONTRACTOR
113 Walnut Lane
West Newton, PA 15089
PH: 412-872-6804

O. A. NEWTON & SON CO.
Bridgeville, DE 19933
PH: 302-337-8211

TRI-STATE MARINE DIST. INC.
Route 256
Deale, MD 20751
PH: 301-867-1447

BUTLER MFG. CO.

Attn. P.E. Hess
P.O. Box 337, Oxford, PA 19363



Dealer Inquiries Available in: Pennsylvania Counties - Berks, Schuylkill, Armstrong, Indiana, Erie, Crawford, Warren, Elk, Cameron, McKean, Clinton, Lycoming, Sullivan, Wyoming, Luzerne, Columbia, Bradford, Susquehanna, Adams, Cumberland, York, New Jersey Counties - Sussex, Morris, Passaic, Atlantic, Cape May, Monmouth, Middlesex, Somerset, Maryland Counties - Talbot, Dorchester, New York Counties - Orleans, Genesee, Monroe, Livingston, Allegany, Steuben, Yates, Seneca, Cayuga, Tompkins, Schuyler, Tioga, Chemung, Broome, Chenango, Madison, Lewis, Oneida, Herkimer, Fulton, Montgomery, Otsego, Delaware, Schoharie, Sullivan, Orange, Ulster, Greene, Chautauque, Catteraugus

No Dealers Fees.

Name _____

Address _____

County _____ Zip _____

City _____ State _____

Phone _____

(Include area code)

LF