

## Piston burning

(Continued from Page D9)

high loads for extended periods of time.

4. Running with extreme compression ratio due to non standard parts of improper rework techniques.

The external causes are the most difficult to pinpoint. Over the past few years we have all seen a general deterioration in fuels. This is not intended as a "slam" at the fuel suppliers, but merely indicates that the range of cetane, specific gravity, flash and ignition points have spread beyond previous limits. This situation can cause variances in engine operating temperatures and pressures as well as have a detrimental effect on injection timing and performance.

Maintenance of the engine is an on-going concern. Routine servicing of the oil system, proper air induction system care, periodic adjustments and all of the checks required in the Owners manual are necessary in order to keep the engine in prime operating condition. Any deviation from normal may create one or more of the adverse operating conditions

explained previously and result in many engine problems including piston burning.

In summary, the problem of piston burning is complex and the causal factors are normally interrelated. However, prevention of this problem can be enhanced by attention to several details:

1. Maintenance of fuel, oil, air and fuel systems.
2. Careful attention to operating conditions to prevent excessive lugging, prolonged idle or operation without proper warmup.
3. Selection of fuels and lubricants to assure optimum operation.
4. Use of factory repair parts and techniques during rebuild.



**BREAKING MILK RECORDS!**  
Lancaster Farming Carries  
DHIA Reports Each Month!

## Commercials to tell ag story

GREENSBORO, N.C. — The saga of American agriculture and the farmer's contribution to our nation's way of life will continue to be told to urban consumers in a new series of television commercials to be broadcast from late November through April on selected network TV news shows.

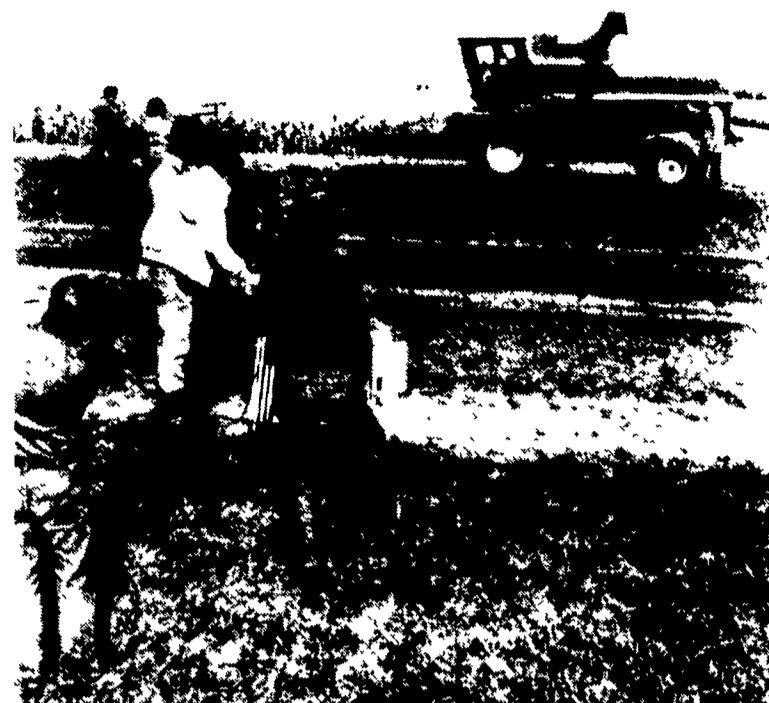
The commercials, sponsored by Ciba-Geigy Corp. and its Dual herbicide, are the continuation of an educational series which began last year. To reach urban consumers, the new series will air on ABC's "Good Morning America" and "This Week with David Brinkley" shows, the "CBS Early News," and on selected local programs.

Last year's series focused on the farmer's productivity, the importance of corn and soybeans to the economy, economic survival of the farmer, soil conservation and reduced tillage, and food as a bargain.

This year's commercials will highlight the 20 million agriculturally related jobs in the production and distribution of food and fiber created by America's two million farmers. They also highlight the fact that farm products are the nation's largest

single export, contributing significantly to the U.S. balance of payments and creating jobs in farm-related industries. Another

commercial will emphasize the importance of farm management in maintaining a strong agricultural base for the economy.



Farm production stars in a new series of Ciba-Geigy TV commercials which demonstrate for consumers the 20 million farm-related jobs created by the nation's two million farmers.

**ATTENTION FARMERS... FREE ESTIMATES ON RODENT CONTROL**



RODENTS carry diseases which can endanger the health of your dairy herds. Your business is raising them. Ours is protecting them.

**We Specialize In Sanitizing And Disinfecting Poultry Houses**



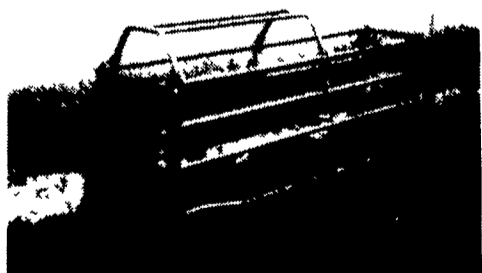
Since 1928  
Pest control is too important to trust to anyone else

Lancaster, PA  
397-3721

Lewistown, PA  
248-0983

State College, PA  
237-7607

### COUNTRY BOY FARROWING CRATE



Crate constructed of 1 1/4" OD pipe, 1/8" thick wall, European-style, adjustable bottom rail.

AVAILABLE IN PAINTED OR GALVANIZED

Special Prices On Galvanized Crates In Stock - Call Us!

Raised Stands Available

Custom Stainless, Aluminum And Steel Fabricating

**BUY DIRECT AND SAVE COUNTRY BOY MFG.**

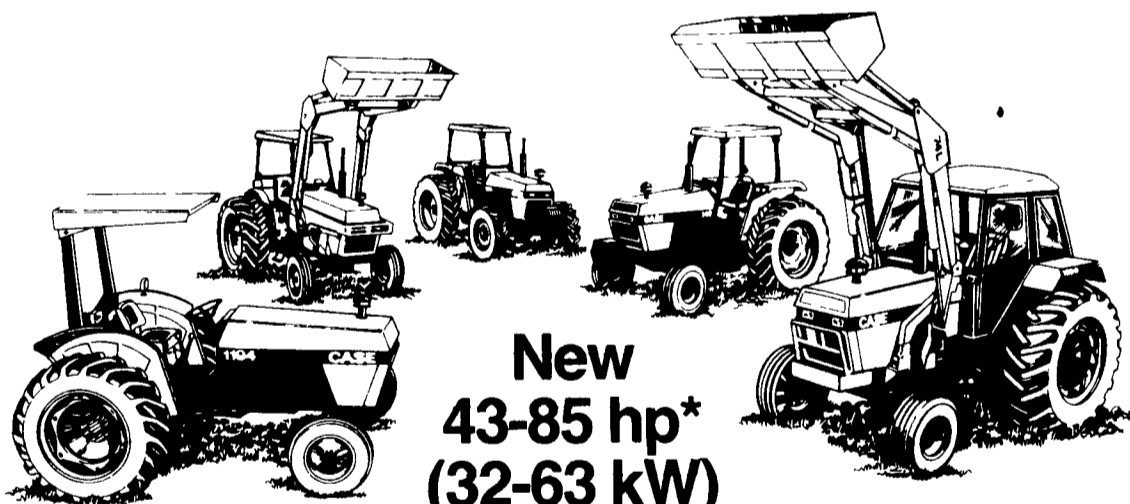
Manufacturers of

- Hog Equipment • Gravity Boxes
- Custom Built Trailers

1601 King St., Lebanon, PA 17042  
**(717) 272-9595**

# Presenting a new generation of high performance General Purpose field power

*From the Tractor Specialist—Case*



**New 43-85 hp\* (32-63 kW) tractors**

Featuring new styling ... new power ratings ... 12-speed power shift ... new cabs ... new instrumentation ... new loaders ... new state-of-the-art human engineering. General Purpose tractors at their best!

**See and drive our new GP's**

\*Mfr's PTO rating

### AT YOUR LOCAL DEALER

**C. H. WALTZ SONS, INC.**  
RD1, Cogan Station, PA  
(717) 435-2921

**PEOPLES SALES & SERVICE**  
Oakland Mills, PA  
(717) 463-2735

**ZIMMERMAN'S FARM SERVICE**  
Bethel, PA  
(717) 933-4114

**THE WARNER CO.**  
"For You The Farmer"  
Troy, PA  
(717) 297-2141

**BINKLEY & HURST BROS.**  
133 Rothsville Station Rd  
Lititz, PA  
(717) 626-4705

**A. L. HERR & BRO.**  
312 Park Ave.  
Quarryville, PA  
(717) 786-3521

**E. W. BILEWICZ EQUIP., INC.**  
Elmer Rd., Richwood, NJ  
(609) 881-2692

**STOUFFER BROS., INC.**  
1066 Lincoln Way West  
Chambersburg, PA  
(717) 263-8424

**CASE POWER & EQUIP.**  
Montgomeryville, PA  
(215) 699-5871  
New Castle, DE  
(302) 652-3028



**C. & P. FULTZ EQUIP.**  
RD 1, Spring Mills, PA  
(814) 422-8805

**PAUL SHOVER'S, INC.**  
35 East Willow St  
Carlisle, PA  
(717) 243-2686  
Loyville, Pa  
(717) 789-3117