

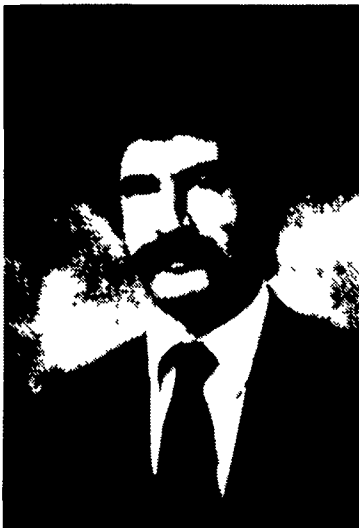
BUSINESS NEWS...

Sire Power names mgr.

Pablo A. Echevarria of Montevideo, Uruguay, has been named to the staff position of Latin America Sales Manager, according to DuWayne A. Kutz, General Manager, Sire Power, Inc.

As a member of the marketing department, Echevarria will be managing the established areas of Mexico, Central and South America, and will also be opening up new sales territory for Sire Power in these countries. He will direct and supervise the activities of established Latin American distributors to develop stronger sales activities and Sire Power programs.

Echevarria has been involved with A.I. and A.I. Training for 10 years. He worked in all aspects of A.I. He also has interest in Embryo Transfer and Reproduction Management. He attended school for his Doctor of Veterinary Medicine in Montevideo, Uruguay. Echevarria has also taken additional courses on ET work and



Pablo Echevarria

A.I. in Argentina, Peru, and the United States. Other background experience includes work in heat synchronization in beef and dairy cattle, semen collection and freezing.

Buffington attends parts meeting

CHAMBERSBURG — Doug Buffington, Parts Manager for Chambersburg Farm Service, Inc., was one of 21 top Dealer Parts Managers from all over the U.S. chosen to attend the first International Harvester "Growing Together" national meeting held recently at the IH Agricultural Equipment General Office in Chicago, Ill.

One Dealer Parts Manager was

selected from each IH sales district in the country because of his ability to most effectively service customers through progressive and innovative programs. The IH Dealer said.

Chambersburg Farm Service, Inc., 975 South Main St., Chambersburg, is the local International Harvester Farm Equipment dealer. They also operate Melrose Farm Service, Greencastle.

3 bulls to ABS

DEFOREST, Wisc. — Three young Holstein bulls have been selected by American Breeders Service to enter their Progeny Testing Program.

From Pen-Col Farms, Millville, Pen-Col Debate-ET and Pen-Col Decode-ET were selected.

Their sire is Browncroft Jetson, +\$285 +2,621M and +62BF and the dam is Pen-Col Elevation Delia. Their dam has production records to 21,540 lbs. of milk, with a Cow Index of +1,642M. She is classified

VG-87 and is sired by Round Oak Apple Elevation.

Mowry-K Boardwalk, bred by Kenneth Mowry, of Roaring Spring, was also selected.

Mowry-K Boardwalk's sire is Cal-Clark Board Chairman, +\$295, +2,527M and +72BF and the dam is Mowry-K Starlite Corinna-ET. His dam has production records to 34,570 lbs. of milk, with a Cow Index of +2,814M. She is classified VG-85 and is sired by Roybrook Starlite.

Krause cites new harrow series

HUTCHINSON, Kan. — The 4900 Series "Flex-Wing" Tandem Disc Harrows, now available from Krause Plow Corporation, are the new generation flex wings that Krause first originated in 1966. This new fuel-saving design features the traditional three section flex-wing design and a

unique new wheel linkage system that reduces field gouging.

The new wheel arrangement allows the center wheels to move backward while the wing wheels move forward providing more uniform depth gauging of the front gangs in the field position. When raised for turns, the center wheels



Assembled in front of J. Mowery Frey Jr.'s Fultonway Farm are: front row from left, Samir M. SULTAN, interpreter; Hassan SALEH, Egyptian television; Essmar ELSAWI, State Bank of Assiut; Yehya Ahmed MOHAMED, director of rural information, Minister of Agriculture; Mohamed SALEH, project director, SFPP and general manager of Governorate Bank; Mamdouh ELZAWI, agriculture undersecretary of state, Kalubia State.

Back row from left, are: George Reagan, ACDI director; Gerald Phillips, appraisal analyst at Farm Credit; J. Mowery Frey Jr.; Charles Schreiber, executive loan officer at Farm Credit; Jerry Oglie, Associate general manager at Farm Credit; and Clayton Owens, regional assistant vice president at Farm Credit.

Egyptians visit U.S. farms

BY KIMBERLY HERR
WILLOW STREET — J. Mowery Frey Jr.'s Fultonway Farm, Willow Street, served as one of the model farms for Egyptian visitors during last Friday's tour.

The visitors represented various banks and the Egyptian Department of Agriculture, as well as some Egyptian news media. The group was also representing the Principal Bank for Development and Agriculture Credit, which is the sole source of credit for Egyptian farmers. Their U.S. host was the Agricultural Cooperative Development International (ACDI), in Washington, D.C.

According to Gerald Phillips, of Farm Credit Service, the group was on a "fact finding tour of the United States."

George Reagan, director of training and evaluation for ACDI, explained the two main goals of the tour.

"They want to understand the farm credit system as we have it and to understand the United States' Extension system, how the information from the universities flows out to the farmers," Reagan said.

On Friday, the men visited Atlantic Breeders Cooperative, Willow Valley Restaurant, where

they ate lunch, Frey's farm and the Lancaster headquarters of Farm Credit Service.

According to one of the tour participants, the most intriguing aspect of Friday was the work being conducted by Atlantic Breeders in artificial insemination.

The Egyptian visitors arrived in the United States Oct. 31 and they will remain here until Nov. 16.

After visiting Frey's farm Friday, the group was heading to Baltimore, Md., and then on to Washington D.C. for some sight-seeing.

Genetic base change explained

FREDERICK, Md. — Dairywomen attending the Maryland Sales Division Open House received a reassuring message from USDA on the Genetic Base Change at the Sire Power facilities near Frederick, Md.

Next year, dairywomen could well see bulls in A.I. that have minus Predicted Difference values for

milk and fat, according to Dr. Frank Dickinson, Chief of the Animal Improvement Programs Laboratory, and one of the major architects of the sire summaries. Also, they will see a lot of cows with negative Cow Indexes. The average index for a Holstein female after the base change will be a -388, Dickinson said, and only 20 percent of the breed's cows will have positive Cow Index values.

"The increased P.D.'s are a sign of progress, and should not be thought of in terms of inflation. The base change has not cheapened the genetics available as the word inflation indicates, but dairywomen are getting a bonus from genetic improvement that is a permanent asset," said Dickinson.

Dickinson reassured the audience that a genetic base must be established realistically as a reference point. Dairywomen need to understand the impact of the genetic base change by evaluating these 4 areas: 1-Trait being evaluated, 2-Geographical area, 3-Time period, and 4-Breed. The basic purpose of a sire summary is to tell dairywomen two things: 1) the rank of one sire to another, and 2) the relative differences between sires

"It is important to realize this does not, in any way, affect the ranking of the bulls," said Dickinson. The most important and valid use of P.D. is to rank the bulls. You can't do any better than to use the higher ranking P.D. bulls in your breeding program."

The Predicted Difference for milk will go down while Predicted Difference for percent fat will

increase in the new sire summaries. Of course, the changes will vary from breed to breed, reflecting the genetic progress breeders have made since the last base was established in 1974. The average P.D. of Ayrshire bulls will drop only 637 pounds, the least among the five major dairy breeds. By contrast, Brown Swiss breeders have made the most progress, whereas, P.D.'s of their bulls will decline 1094 pounds, Dickinson said. And in the Holstein breed, P.D.'s will decline by 978 pounds of milk and 28 pounds of fat.

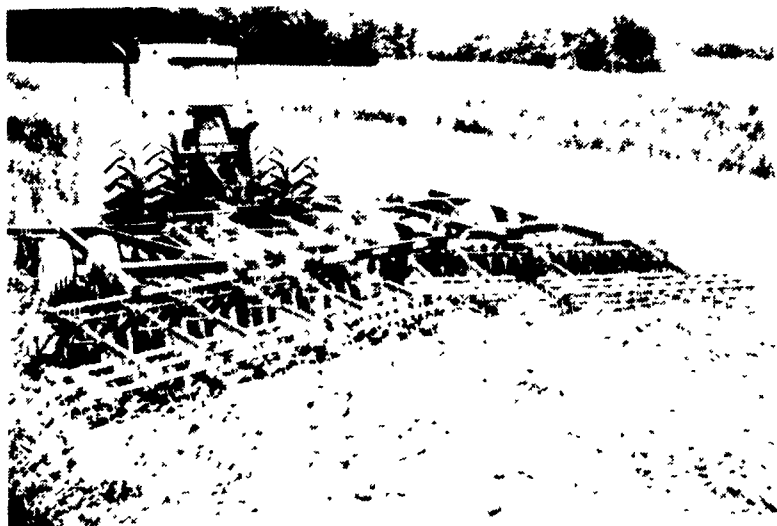
For example, a +2000 pound Holstein bull changes to +1022. The adjustment is pure arithmetic. The bulls have not changed, only the numbers. Differences between bulls (their ranking) will remain the same.

Dickinson left them with this suggestion, "Go home and cull your semen tanks to get the low P.D. bulls out of there, so you as a dairyman, will raise your genetic progress and growth."

License revoked

DOVER, Del. — The Delaware Department of Agriculture has revoked the license of a certified pest control applicator following an investigation into illegal practices.

The license of Dallas Veal, owner of All-Right Termite Control in Milford, Delaware, was terminated after Department of Agriculture inspectors learned Veal had used the pesticide Chlordane inconsistent with the label instructions.



This is the Krause 4900 Series Flex-Wing tandem disc harrow.