

# dhia

Pennsylvania Dairy Herd Improvement Association

## York County DHIA Monthly Report

Wayne E Myers	41.8	85.2	19,373	726
Paul R King	52.8	88.6	17,794	705
David Stewart	110.7	89.2	19,633	698
Thomas A Boyer	42.1	83.9	19,018	691
Rick L Cook	58.6	87.7	18,176	690
The JE Baker Co	43.2	85.7	18,972	686
Sinking Spring Fm Inc	67.3	86.1	18,523	668
Mc Ral Dairy Farm	151.5	90.8	18,635	668
Earl Fuhrman	83.1	86.4	17,870	660
B Robert Charles	47.1	87.9	19,108	659
Geo Knight	125.1	89.3	18,034	658
Rineway Dairy Farm	92.8	86.9	17,361	654
Lonnie Robinson	39.4	95.5	16,737	643
Wayne B Mummert	72.2	85.9	17,389	641
William Myers	40.5	88.1	17,499	640
William Ruppert	53.1	86.2	18,018	637
Melvin R Lehr	50.5	83.7	16,732	626
Edwin L Calhoun	44.9	89.3	16,822	622
Smokey Hollow Farm	33.3	88.6	17,766	619
Big T Holsteins	89.1	84.3	17,121	619
Fawn Meadow Holstein	67.5	87.2	17,085	618
Walnut Hill Farm	38.2	88.4	17,010	616
Leroy Bupp	97.8	89.3	17,772	613
Leland Stanford	35.3	86.7	17,101	605
Mervin W Hertzler	63.1	88.7	12,616	601
RR&MR Stewart	56.5	88.7	16,806	* 601
T Edwin Johnson	65.4	85.1	15,746	600

### September Report

OWNER	BREED	NO. COWS	% DAYS IN MILK	LBS. MILK	% FAT	LBS. FAT
Smysers Richlawn Fms		68.0	86.5	21,485	792	
Stump Acres		89.9	90.3	19,467	773	
Lynn Wolf		64.7	90.3	19,905	765	
Beshore Farms		45.0	83.5	20,120	735	
Jim&Holly McCaffree		39.0	82.4	20,481	* 734	
HS&RE Fetrow		78.4	87.8	19,714	731	

C Robert Kilgore	49.9	88.5	17,129	597
Dennis J Myers	52.9	88.4	16,257	597
Harold Brown	71.6	84.0	16,046	596
Fred Sprengle	45.1	84.9	17,432	595
JH&MB Hushon	93.6	88.5	16,055	594
Gum Tree Farm	43.4	90.5	17,058	590
Rutter Bros	81.4	87.2	12,037	589
Double D Farm	93.9	83.0	15,948	585
Ellis Crowl	102.5	86.3	16,816	583
Titus Walker	37.0	86.5	15,635	577
George Innerst&Sons	70.7	86.2	15,628	577
David L&Chris Druck	72.7	82.0	17,990	575
Walkers Farm	74.0	86.8	15,856	575
J Donnell Taylor	114.5	85.6	16,018	574
Honeycrest Fm	102.1	87.3	13,586	573
Elvin G Molson	147.3	83.9	16,131	571
Wayshar Farm	92.5	87.2	15,122	568
Kenneth L Rexroth	138.9	89.0	15,190	566
Daryl L Bair	38.0	87.5	16,502	565
Rodman C Thompson	66.4	83.3	15,914	565
John C Krone	40.4	85.8	15,655	562
Phillip D Laughman	28.9	84.8	15,724	561
Robt Baumgardner Jr	57.2	84.0	15,351	558
William H Fantom	65.9	84.8	15,274	557
Eisenhart Bros	77.8	86.5	14,985	554

(Turn to Page D18)

# Easy Rider.

**NEW**



It's comfortable. It's quiet. It's roomy. It's a tractor cab like you've never seen before in the 55- to-78 horsepower range. And it's standard on the new Massey-Ferguson 600 Series tractors.

These new deluxe two- or four-wheel drive models are long on features normally available only on larger tractors at a much higher price. There are comfort features... like Massey climate control and a deluxe, cloth-covered, spring-suspension seat.

And there are performance features... like a smooth-as-silk 12-speed synchromesh transmission that lets you glide through the gears... hydrostatic power steering that gives you firm control with a light touch... and advanced Ferguson hydraulics for instant draft and position control.

These tractors are easy riders that work hard for a living. And they don't eat much. Because all three models feature fuel-sparing

Perkins diesel engines. And there's a 250-hour interval on engine oil and filter changes for reduced maintenance.

For the comfort and performance you didn't think a tractor this size could offer...

See your MF dealer today and get more value for your money.

**See us today and get all the details.**



**Your Business Machines**

**N. H. FLICKER & SONS, INC.**  
Maxatawzy, PA  
Ph (215) 683-7252

**WEB SNYDER INC.**  
RD 1  
Watsonstown, PA 17777  
Ph (717) 538-5555

**PETERMAN FARM EQUIPMENT**  
225 York Road  
Carlisle, PA  
Ph (717) 249-5338

**M. M. WEAVER & SON**  
N Groffdale Rd  
Leola, PA 17540  
Ph (717) 656-2321

**S. G. LEWIS AND SON**  
West Grove, PA  
Ph (215) 869-9440  
869-2214

**MARLIN W. SCHREFFLER**  
Pitman, PA  
Ph (717) 648-1120

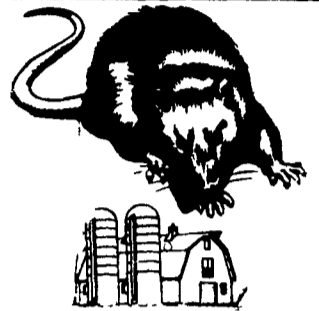
**R.W. KELLER SALES**  
Perkasie, PA 18944  
Ph (215) 257-0101

**LEBANON VALLEY IMPLEMENT CO.**  
700 E Linden St  
Richland, PA  
Ph: (717) 866-7518

**ARNETT'S GARAGE**  
Rt 9 Box 125  
Hagerstown, MD  
Ph (301) 733-0515

**ADRACZINSKA'S FARM EQUIP. INC.**  
RD 1, Catawissa, PA  
Ph (717) 356-2323  
(South on Rt 42)

**ATTENTION FARMERS... FREE ESTIMATES ON RODENT CONTROL**



RODENTS carry diseases which can endanger the health of your dairy herds. Your business is raising them. Ours is protecting them.

**We Specialize In Sanitizing And Disinfecting Poultry Houses**

**Ehrlich**

Since 1928

Pest control is too important to trust to anyone else

Lancaster, PA  
397-3721

Lewistown, PA  
248-0983

State College, PA  
237-7607

## CONTACT US

For **MANURE HANDLING EQUIPMENT**

Semi- and Liquid Spreaders - Ground Driven - Easy Running Priced Reasonably

**PIT ELEVATORS**

**ALLIS CHALMERS AND WISCONSIN POWER UNITS**

**COMPACT ROTO BEATERS**



Equipped with rubber mounted axle shocks

**HAND-O-MATIC BUNK FEEDERS NOW IN STOCK FOR EASY SILAGE DISTRIBUTION**

**PLATE SHEARING & PRESS BRAKE WORK**

**APPROX. 1200 NEW VICTOR ANIMAL TRAPS ENTIRE LOT \$1.00 EACH**

**SMUCKER WELDING & MANUFACTURING**

2110 Rockvale Road  
Lanc., PA 17602  
PH: (717) 687-9198