


THE OLD FARMER'S ALMANAC

OCT. 31-NOV. 6, 1983
Time to tote an overcoat.

Clean up the vegetable garden Erie Canal opened Nov. 2, 1825
New moon Nov 4 (Fri) Average length of days for the week, 10
hours, 15 minutes Nevada became 36th state Oct. 31, 1864 P.O.
established in Boston Nov 5 1639 First intercollegiate football
game Nov 6, 1869 (Rutgers 6, Princeton 4) There was never a good
knife made of bad steel



Ask the Old Farmer: How can I restore the luster to my maple bed headboard, which has been dulled by handprints? J.K., Duxbury Mass.
Wash with a solution of equal parts of vinegar, mineral oil and turpentine. Shake well and use a soft cloth. Then apply a coat of tung oil.

Home Hints: Save the empty squeeze-type mustard or honey containers and fill them with icing to decorate cakes and pastries. They do a neat job.

OLD FARMER'S WEATHER FORECASTS

New England: Week starts clear and cold then rain south snow mountains through weekend
Greater New York-New Jersey: Clear and cold at start of week rain reasonably cool rest of week
Middle Atlantic Coastal: To start, rain north cool temperatures all week, with heavy rain for week's end
Piedmont & Southeast Coastal: To begin week, clear and mild, rainy and cool through weekend

(All Rights Reserved Yankee Publishing Incorporated Dublin NH 03444)

New Wilmington Livestock

Monday, Oct. 24
Report Supplied by PDA

CATTLE 235. Compared with last Monday's market, slaughter cows steady to strong. Few Good slaughter steers 54.50-58.00, few Standard 46.50-52.25. Couple Choice slaughter heifers 58.75 & 60.00, couple Good 49.75 & 50.00, Standard 43.00-48.50, few Utility 37.25-40.00. Utility & Commercial slaughter cows 38.00-40.50, couple 42.00, Cutters 35.00-38.50, Canner & Low Cutter 28.00-35.50, Shells down to 21.00. One Good slaughter bullock 53.00. Few Yield Grade #1 1095-1810 lbs. slaughter bulls 43.00-49.75, few Yield Grade #2 1210-1325 lbs. 37.75-42.50.

FEEDER CATTLE: Few Medium Frame #1 700-865 lbs. feeder steers 42.50-47.00. Medium & Large Frame #1 300-545 lbs. feeder heifers 45.00-51.00, 600-765 lbs. 40.00-45.00, Medium & Large Frame #2 330-645 lbs. 29.00-38.75.

CALVES 271. Vealers steady.

One Prime vealer 102.50, few Choice 85.00-91.00, few Good 70.00-80.00, Standard & Good 90-125 lbs. 38.00-51.00, 60-85 lbs. 20.00-38.00, Utility 50-80 lbs. 14.00-20.00.

FARM CALVES: Holstein Bulls 95-125 lbs. 61.00-99.00, Holstein Heifers 85-120 lbs. 43.00-50.00.

HOGS 640. Barrows and gilts 50 cents-\$1.00 lower. US No. 1-2 210-245 lbs. barrows & gilts 40.00-40.60, few at 41.00, No. 1-3 200-270 lbs. 39.00-40.10, few No. 1-3 190-195 lbs. 37.00.

SOWS about steady, US No. 1-3 325-565 lbs. sows 34.00-38.00, few No. 2-3 330-660 lbs. 30.00-33.25.

BOARS 28. 00-31.00.

FEEDER PIGS 87. US No. 1-3 15-30 lbs. feeder pigs 8.00-13.00 per head, No. 1-3 30-40 lbs. 12.00-18.00, few No. 1-3 110-150 lbs. 35.50-39.00 per hundred weight.

SHEEP 146. Choice & Prime 80-115 lbs. Woolled slaughter lambs 50.00-57.00, Good 80-90 lbs. 45.00-52.00. Good 60-75 lbs. feeder lambs 47.00-55.00. Slaughter ewes 8.00-18.00.

Livestock market and auction news

Lebanon Valley Livestock

Fredericksburg, Pa.
Tuesday, Oct. 25
Report Supplied by PDA

CATTLE 285. Few High Choice & Prime 1135-1190 lbs. #3-4 slaughter steers 62.00-63.75, Choice 1020-1545 lbs. 2-4 59.25-61.85, few 63.10, Good 57.85-59, few to 60.75; Good & Choice 52.00-56.35 (holsteins); Standard 49.85-53.85 few Utility 41.75-48.75. Choice 920-1270 lbs. slaughter heifers #3-5 55.75-58.85, few 60.75, few Good 48.25-54.75, few Standard 43.75-47.25. Utility & Commercial slaughter cows 37.75-39.60, few 42.10, Cutters 35.50-38, Canner & Low Cutters 27.50-36, Shells down to 21.50, few down to 17.00. Few Good slaughter bullocks 51.75-52.35, few Standard 44.50-47.50, few Utility & Low Standard 40.50-44.25. Few Yield Grade #1 1235-1640 lbs. slaughter bulls 49.00-53.00.

CALVES 275. One Prime vealer at 81.00, few Choice 81.00-87, few Good 56.00-71, few Standard 40.00-46.00, Standard & Good 90-110 lbs. 51.00-55, 65-90 lbs. 45.00-51, Utility 55-95 lbs. 20.00-39.00.

FARM CALVES: Holstein Bulls 90-125 lbs. 70.00-90; 80-90 lbs. 52.00-62; few Holstein Heifers 90-115 lbs. 67.00-85; Few Beef cross bulls & heifers 60-95 lbs. 50.00-57. Good & Choice 200-260 lbs. slaughter calves

50.00-56.00.
HOGS 169. US No. 1-2 220-265 lbs. barrows and gilts 40.75-41.75, No. 1-3 215-255 lbs. 40.10-40.75, No. 1-3 190-205 lbs. 36.25-39.25. **SOWS:** US No. 1-3 285-640 lbs. sows 31.25-33.35, few No. 2-3 300-655 lbs. 28.00-31.75. Boars 25.00-27.00.

FEEDER PIGS 19. US No. 1-3 25-60 lbs. feeder pigs 26.00-40 per hundredweight.

SHEEP 11. Few Choice 65-80 lbs. woolled slaughter lambs 40.00-44, few Good 50-100 lbs. 33.00-39.00. Slaughter sheep, couple 10.00 & 14.00 per head. **GOATS 6:** Few 24.00-30, one 58.00 per head.

slaughter bulls 44.00-48, #2 900-1400 lbs. 40.00-44.75.

FEEDER CATTLE: Medium Frame #1 350-650 lbs. feeder steers 55.00-60. Medium Frame #1 300-600 lbs. feeder heifers 43.00-49.00.

CALVES 302. Vealers grading Good & Choice \$2-\$4 higher, Standard & Good steady. Choice vealers 79.00-90, Good 65.00-80, Standard & Good 90-120 lbs. 46.00-52, 60-85 lbs. 41.00-47, Utility 30.00-44.00.

FARM CALVES: Holstein Bulls 90-125 lbs. 60.00-93.00. Good & Choice 250-370 lbs. slaughter calves 44.00-55.00.

HOGS 101. Barrows and gilt. \$1.50-\$2 lower. US No. 1-2 2-255 lbs. barrows and gilts 38.70-39.50, No. 1-3 210-260 lbs. 38.00-38.80, few No. 2-3 300 lbs. at 37.00. US No. 1-3 350-565 lbs. sows 34.00-37.50, No. 2-3 400-650 lbs. 32.00-35.25. **BOARS 26-29.** 25

FEEDER PIGS 19. US No. 1-3 45-60 lbs. feeder pigs 16.00-20 per head.

SHEEP 77. Woolled slaughter lambs unevenly steady. High Choice & Prime 80-85 lbs. woolled lambs 49.00-50.50, one lot 57.50, Low Choice 75-85 lbs. 45.00-48.50 Slaughter ewes 11.50-16.00.

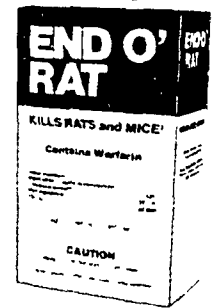
Eighty-Four Livestock

Monday, Oct. 24
Report Supplied by PDA

CATTLE 366. Compared with last Monday's market, slaughter cows steady. Standard slaughter steers 48.00-54.00, Utility 43.00-48.25. Standard slaughter heifers 45.00-49.25, Utility 40.00-45.00. Utility & Commercial slaughter cows 38.25-41.75, few 42.00-43.00, Cutters 35.00-38.50, Canner & Low Cutters 27.00-35.25, Shells down to 20.00. Yield Grade #1 1000-1950 lbs.

Kills rats and mice!

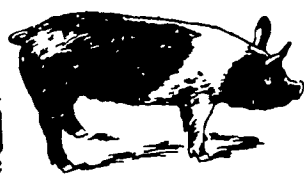
End O' Rat works fast to kill unwanted rats and mice. Completely safe for use around the home, farm or factory buildings. End O' Rat is specifically formulated to appeal to the natural feeding habits of rats and mice. And End O' Rat contains Warfarin - for proven effectiveness. Put End O' Rat to work for you today!



Distributed by

New Holland Supply Co.
New Holland, PA
717-354-2340

Caldwell Supply Co.
West Trenton, NJ
609-882-2223



EMERY'S BUYING STATION

OPEN TO RECEIVE YOUR MARKET HOGS
AT THE GREEN DRAGON MARKET
RD 4, EPHRATA, PA 17522
1 MILE NORTH OF EPHRATA ON NORTH STATE STREET.

HOURS
MONDAY, TUESDAY, and WEDNESDAY
6:00 A.M. to 11:30 A.M.

215-458-5677 Residence
717-733-9648 Office

YOU ARE PAID FOR YOUR HOGS IMMEDIATELY

Ken & Lois Emery, Proprietors



ATTENTION FARMERS

EVERY MONDAY HATFIELD PACKING CO. and BAUMS MEAT PACKING Will Receive Your Hogs and Cattle at the DANVILLE LIVESTOCK MARKET
RD4, Danville, PA

- We will receive your hogs from 8 AM to 12 Noon every Monday. Your hogs will be weighed and paid for immediately.
- We will also accept your sows & boars.
- Your cattle will be received from 12 Noon to 4 PM. We will either pay for your cattle immediately or you may sell them dressed weight.
- There will not be a commission or yardage fee deducted from your check.
- You may call our office Monday morning and we will be able to tell you the base price for hogs for the day.
- Please come and give us a chance to continue doing business with you through this method.

FOR INFORMATION CALL 717-275-2880

Kleen Leen Hog Seed
Bloodline Checker Boar
140 GPR

Those aggressive Checker™ Boars and healthy Checker™ Gilts are as close at hand as we are. No one offers more to your entire hog operation: Kleen Leen's guaranteed breeders. An unmatched health program. Plus the most progressive way to judge boars today... "Genetic Potential Rating."

Stop by soon. Remember, we've got more in store for you than just our great feeds.

SEE YOUR PURINA DEALER TODAY

KEYSTONE MILLS
John B. Kurtz
PHONE 717 354 4616 717 738 1088
RD3 EPHRATA PA 17522



No One Offers More

HESS MILLS
PHONE 717 442 4183
717 768 3301
PARADISE PA 17562

K & K FEED, INC.
PHONE 717 866 2324
23 N PARK ST RICHLAND PA 17087

WOODSTOWN ICE & COAL CO.
PHONE 609 769 0069
WOODSTOWN NJ 08098

WEST WILLOW FARMERS ASSN., INC.
PHONE 717-464 3386
WEST WILLOW PA 17538

FRIDAY, NOVEMBER 25 ON THE FARM MONTHLY BRED GILT SALE

Sale to Start Promptly at 1:00 Every 4 Weeks

Located 18 miles south of Lancaster Pa., 6 miles south of Quarryville, take Rt 272 to Little Britain, turn north, follow Little Britain Road to Jackson Road, 2nd farm, OR take Rt. 222, out of Quarryville to Cedar Hill Road to Little Britain Road to Jackson Road. Watch for sale arrows

50 to 60 Head
Now selling our new hybrid gilts representing mostly York & Hampshire & Landrace cross. Bred for easier & Less trouble over farrowing and better weight gains.

Validated Brucellosis Free Herd #169
Qualified Pseudorabies Free Herd #55

Hand mated with Breeding Dates

Local Trucker Available
No Hogs Sold On Commission

CHRIST A. BEILER
R.D. 2, Quarryville, Pa
JOHN B. STOLTZFUS
R.D. 1, Kirkwood, Pa
Abe Diffenbach, Auctioneer

NEXT SALE DATE DECEMBER 23