

Trimbles welcome Brown Swiss breeder to convention

BY TRISH WILLIAMS
PEACH BOTTOM — The excitement is starting to build in Lancaster County, as Pa. Brown Swiss breeders ready for the 103rd National Convention they will host here November 9-12.

Don Trimble, Peach Bottom dairyman and president of the Pa. Brown Swiss Association is co-chairman of the convention steering committee. Along with co-chairman, Audrey Queitzsch, the two have directed the efforts of other members in planning a four-day event that will provide fellowship, facts, top pedigree cattle, and fond memories for the 400 delegates expected to attend.

Carol, Don's wife, has been busy planning the ladies activities, and Cindy, their daughter, has been involved in planning youth activities. At home on their Donsdell Farm, the whole family gets involved too.

Cindy, 16, and her brother Scott, 13, alternate the responsibility of helping their dad with the evening milking. Scott is the clean-up man after the evening milking, while Cindy feeds the calves.

The 80-cow herd is about half registered Brown Swiss and half Holsteins. About one third of the Holsteins are also registered.

Trimble, who has served as president of the Pa. Brown Swiss Assn. for five years, began dairying in a partnership on the

present farm in 1969. In 1975 he and Carol bought the farm.

Starting out with about one third of the herd being Brown Swiss, that percentage has increased to about half, and Trimble anticipates that the percentage of Brown Swiss in the herd will continue to increase, eventually becoming entirely registered Brown Swiss. This change reflects a national trend.

"The number of Brown Swiss cattle in Pennsylvania and across the nation is on the rise," Trimble stated proudly. "I think there will be more color breed animals, especially Brown Swiss and Jersey, in the next 20 years, because of component pricing. There is already a lot of Brown Swiss stock in Holstein herds across Pennsylvania."

"We find the Brown Swiss are better able to hold up under our confinement system," says Trimble. "They have stronger feet and legs and better udders than the Holsteins, giving them greater longevity in the herd. We can get more lactations out of Brown Swiss."

The strength of the Brown Swiss breed is not just internal, the milk Brown Swiss cows produce is also higher in protein than Holsteins, explained Trimble.

"In September we completed our first protein testing. The Holsteins averaged 3.3 percent protein, while the Brown Swiss averaged 3.5 percent protein. Our rolling herd

average on the Brown Swiss last year was 14,600 pounds of milk and 630 pounds of fat."

Trimble points to descendants of the Shellburne Farms bloodlines as being important to his herd's breeding program. He bought five Shellburne descendants from Rohrer Witmer, which have served as foundation cows for his herd. One of the cows, Witla Talisman Novel, is rated 26th on the national CPI. Novel is classified VG 86 and her record reads, ME milk 22,441; ME fat 809; CI milk + 1944; CI fat + 48.

Another foundation cow, Donsdell Beautician Amber, with a daughter producing over 25,000 pounds of milk. Amber has the greatest number of descendants in the Donsdell herd and has a lifetime production record over 100,000. She is nine years old.

Trimble who exhibited the grand champion Brown Swiss at the Farm Show in 1974, 75, and 76, with three different cows, will selling a 3-year-old in the convention sale.

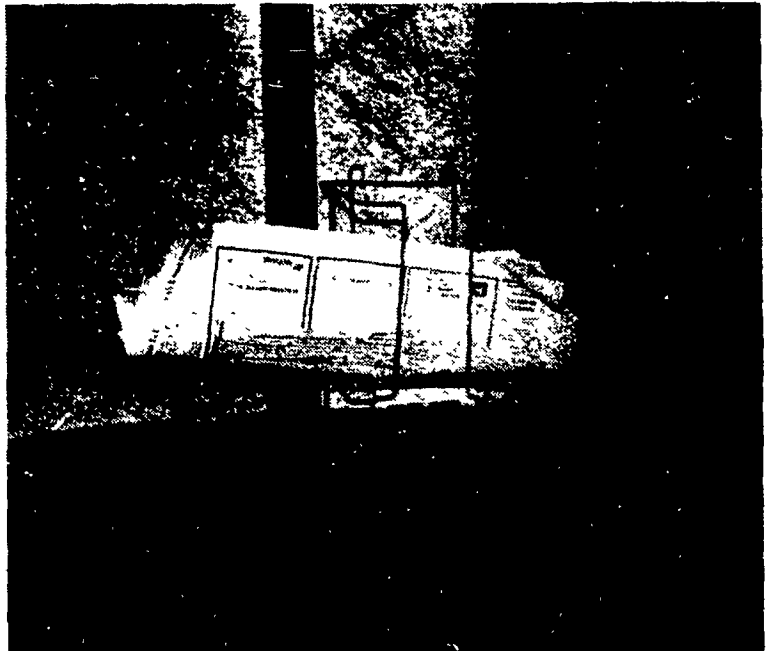
The convention sale is scheduled to take place Saturday, November 12 at the Lebanon Fairgrounds. All other convention activities will take place at convention headquarters, The Host Farm Corral, east of Lancaster on route 30.



Cindy, Don and Scott Trimble share their enthusiasm for Brown Swiss cattle with breeders from across the nation. They are encouraging delegates to the national convention to visit their Donsdell Farm and view their herd of Brown Swiss.



Cindy Trimble enjoys feeding the calves, especially this one, her own "Angel." Cindy is a junior at Solanco High School and has been active in planning the youth activities for the convention.



Don Trimble has found a way to recycle Lancaster Farming. He cuts the pages in four and uses them to dry the cows udder before milking.

Convention activities include tours of Lancaster County, three seminars by Penn State dairy specialists, the annual banquet and meeting, entertainment, and youth and ladies activities. See you there.



Don Trimble, president of the Pennsylvania Brown Swiss Association, his wife Carol, and children Cindy and Scott, stand before their stone farmhouse built in 1814.

