

Rocky III

(Continued from Page A27)

winner Chris Shive presented her 1210-pound "Abe" for the next round of heated bid competition.

Glenn Snyder, representing Peoples' Bank of Glen Rock, emerged the winner, holding out with a final bid of \$1.31 per pound

on the Chianina-Angus crossbred.

The win marked a second major county 4-H accomplishment within weeks for the 17-year-old 4-H livestock and public speaking veteran. Earlier, during October's national 4-H week observance ceremonies, Chris was named the 1983-84 York County 4-H queen. She's the daughter of Mr. and Mrs. Gordon Shive, Seven Valleys. Adams County's champions

paraded into the auction ring spotlight next, with Amy Sherman leading in her sparkling-white, 1255-pound Charolais, the winner earlier of the light heavyweight class.

Cumberland County National Bank at New Oxford, represented by Harland Fricke, was the winning buyer of the Abbottstown R1 4-H'er champ, with a final bid of 95 cents.

That 95-cent price was upheld as the reserve champion of Adams County followed on the auction list. Exhibited by Dennis Flickinger, Gettysburg, the 1320-pound Angus x Hereford x Simmental went to Willie "the Butcher" Kreider, for Stauffer's of Kissel Hill Markets of Lancaster, Lititz, Leola and Rohrerstown.

Other champions in the various weight categories were earned by Robert Livingston, Dover, and Robin Shive, Seven Valleys. Reserve honors in the various classes went to Sonja Shearer, Abbottstown, Donald Godfrey, Red Lion, Joann Rushe, Seven Valleys, and Dave Erlemier, Spring Grove.

Four exhibitors won showmanship trophies during competition in their age categories. Senior winner was Robert Livingston, Dover, Intermediate, Donald Godfrey, Red Lion, Junior, John Hausner,

Dover, and Novice, Sandra Eisenhour, Wellsville.

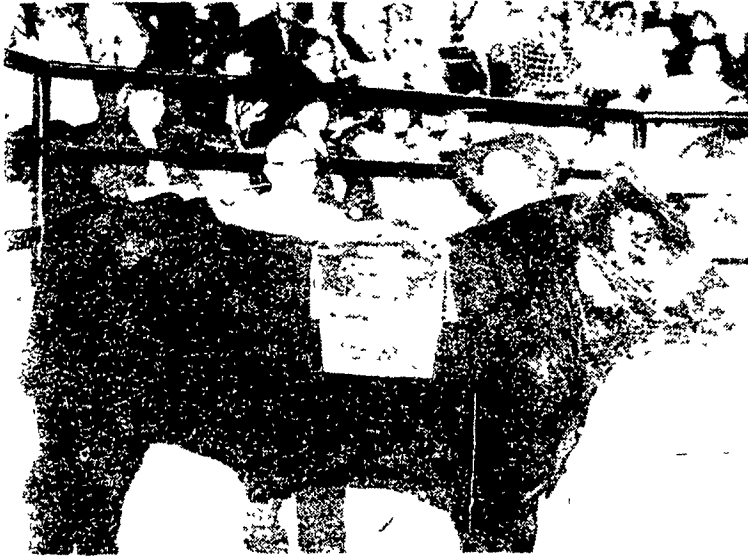
The 54 steers sold for a total of \$41,128.70, and averaged 1132 pounds each. Average price, with the champion, was 83 cents, and 80 cents without the champion.

The sale was the first held separate from the regular Wednesday evening Thomasville auction and kicked off with a social hour for exhibitors, buyers and supporters. Beef noodle and vegetable soups, turkey and

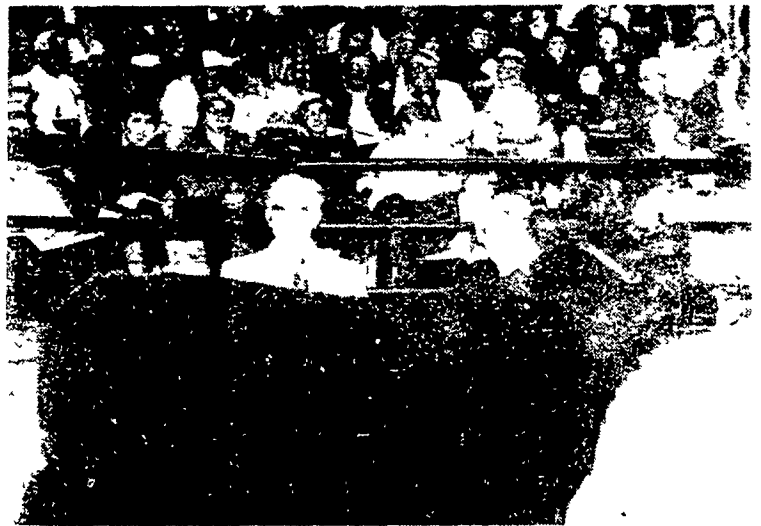
breasts and turkey ham donated by Round Hill Foods, and sheet cakes baked by 4-H supporters warmed exhibitors who had spent the day battling downpours through the showing competition before judge Don Nichols Penn State livestock specialist.

A special plaque of appreciation went to the auction from the 4-H'ers for the continued support of the livestock market in hosting the annual roundup event.

(Turn to Page A38)



Sterling Myers bid \$1.60 per pound for John Eaton's 1200-pound York-Adams roundup champion steer, the third consecutive time the youngster took the top award. Myers operates the Menges Mills Market.



Reserve champion of the York-Adams beef roundup went to Glenn Snyder representing Peoples Bank of Glen Rock, who paid \$1.31 per pound to exhibitor Chris Shive.

NEW FORD TW SERIES



EFFICIENCY

The new Ford TW Series tractors are designed from the ground up for efficiency that strengthens your bottom line. And there's one sized for your farm. TW-5-105 PTO hp * TW-15-120 PTO hp * TW-25-140 PTO hp * TW-35-170 PTO hp *

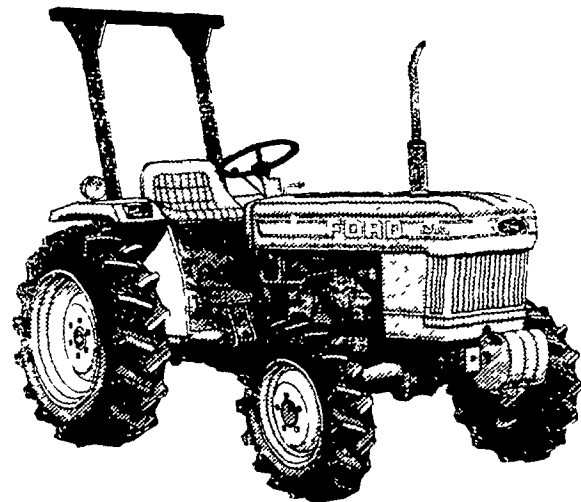
- FREE TRACTOR CARE—Virtually all you buy is the fuel and fluids for replenishment during the first three years or 2,500 operating hours *
- New engine efficiency—from the exclusive air-to-air intercooler on the TW-35 to the new viscous fan drive that cuts parasitic power loss
- New TW Series tractors deliver excellent fuel economy without sacrificing torque or strength

- New optional center-differential front-wheel drive—tests show it could cut fuel consumption and field time by up to 20 percent on a per-acre basis, depending on tractive conditions
- New computerized Performance Monitor—monitors excessive wheel slip for maximum efficiency. Precisely measures in-field productivity
- 16-speed Dual Power transmission—shift on-the-go between Direct and Power Drive for extra pull when you need it

Stop in and see the tractors engineered to help you farm efficiently. Profitably. Stop in and see us today.

Manufacturer's estimate. *See us for complete details.

STOCKY NEW FORDS!



TOUGH NEW 1000 SERIES DIESELS UNDER 30 HORSEPOWER

Whether you want to mow an acre or a hundred, dig a posthole or a sewer trench, grade a driveway, plow a field or load a truck, we've got a Ford 1000 Series tractor for the job!

These new compacts come with a combination of features you can't get anywhere else. Smooth, efficient diesel engines. Standard 10 or 12-speed transmissions. Hydrostatic and Synchro Manual Shuttle transmission options. Standard 540 rpm PTO and Category I three-point hitch. Diff-lock. Optional front-wheel drive. And a choice of more than 50 matching implements and attachments.

So stop in soon and see the new 1000 Series tractors. There's one just right for you!

SPECIAL
NEW FORD 7700, CAB & AIR
\$22,500



PARTS ★ SALES ★ SERVICE
KELLER BROS.

1921 TRACTOR CO. 1983

717-949-6501

Rt. 419 Between Schaefferstown & Cornwall, Lebanon County

