

W Wickes Lumber

# YOUR ONE STOP FOR FARM BUILDING MATERIALS



## STEEL ROOFING & SIDING

36" actual coverage

Galvanized finish is corrosion and weather-resistant. Lengths available to fit most of your farm construction needs.

Painted - White, Brown, Red, Tan

8'	10'	12'	14'	16'
\$11.69	\$14.49	\$17.49	\$20.39	\$23.29

**\$45.99**

Stock Sizes Only  
100 Sq. Ft. High Tensile Steel

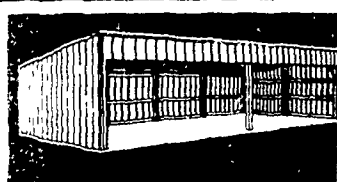
PRICES GOOD THRU NOV. 12

## TREATED TIMBERS

The perfect choice for farm buildings! Economical treated boards can be stained, painted or allowed to weather naturally. Durable... creates a safeguard against termite damage and decay.

	12'	14'	16'	18'	20'	22'	24'
4x6	\$10.99	\$12.69	\$14.99	\$18.49	\$20.59	—	—
6x6	\$16.95	\$20.59	\$23.49	\$29.95	\$32.95	\$41.19	\$44.39

Versatility Plus Long-Lasting Protection!

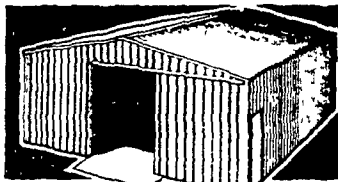


**THE SOUTH FORK**  
15'-6" x 32'  
Loading Shed

• Optional 16 ft. additions

**1365<sup>00</sup>**

Package

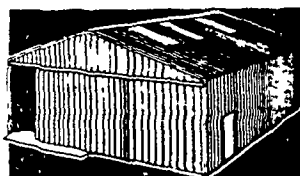


**THE SHERIDAN**  
30' x 32'  
Multi-Purpose Building

• 10' sidewall • Optional 8 ft. additions  
• 10' end door

**2999<sup>00</sup>**

Package

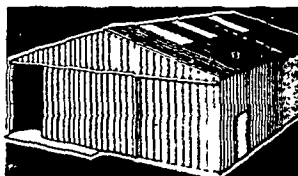


**THE WINCHESTER**  
40' x 48'  
Machinery Storage Building

• 14' sidewall • Optional 8 ft. additions  
• 16' end door

**5880<sup>00</sup>**

Package

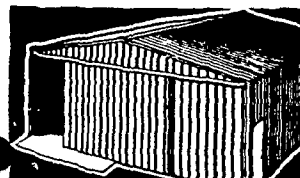


**THE SHENANDOAH**  
42' x 48'  
Machinery Storage Building

• 14' sidewall • Optional 8 ft. additions  
• 20' end door

**6188<sup>00</sup>**

Package

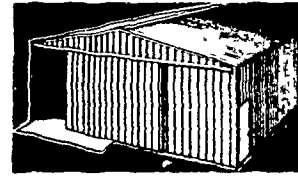


**THE PENDLETON**  
32' x 32'  
Multi-Purpose Building

• 12' sidewall • Optional 8 ft. additions  
• 14' end door

**3400<sup>00</sup>**

Package

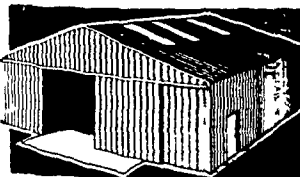


**THE REMINGTON**  
36' x 40'  
Multi-Purpose Building

• 12' sidewall • Optional 8 ft. additions  
• 16' end door

**4229<sup>00</sup>**

Package

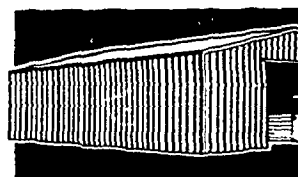


**THE LINCOLNSHIRE**  
48' x 48'  
Machinery Storage Building

• 14' sidewall • Optional 8 ft. additions  
• 24' end door

**6877<sup>00</sup>**

Package



**THE BUCKINGHAM**  
32' x 32'  
Horse Barn

• 12' sidewall  
• 5 stalls

**5339<sup>00</sup>**

Package

**Wickes Lumber... Your Best Choice!**

Prices good at the following location only:

1 1/4 Mile North East of EPHRATA, PA. on Rt. 272  
PH: 717-733-6521 or Lanc. 717-394-9325

Hours: Mon., Thurs., Fri. 8 AM to 8 PM;  
Tues. & Wed. 8 AM to 6 PM; Sat. 8 AM to 3 PM



## Livestock market

### Belknap Livestock

Dayton, Pa.

Wednesday, October 26

Report Supplied by PDA

**CATTLE** 115. Compared with last Wednesday's market, slaughter cows steady to 50 cents lower. Few Choice slaughter steers 56.50-58.50, Standard 43.00-50, Utility 35.00-42.00. Utility & Commercial slaughter cows 37.00-43, Cutters 34.00-38, Canner & Low Cutters 26.00-34.25, Shells down to 20.50. Couple Standard slaughter bullocks 44.00-44.50. Couple Yield Grade #1 1170-1595 lbs. slaughter bulls 45.75-46.00.

**FEEDER CATTLE:** Few Medium Frame #1-2 310-530 lbs. feeder heifers 37.00-40.00.

**CALVES** 83. Couple Choice vealers 73.00-76.00, one Good at 68.00, few Standard 50.00-60, Standard & Good 90-120 lbs. 47.00-53, 60-85 lbs. 40.00-48.

**FARM CALVES:** Holstein Bulls 95-125 lbs. 55.00-90; few Holstein Heifers 80-110 lbs. 52.00-85.00. Beef cross bulls & heifers 60-125 lbs. 49.00-68.00.

**HOGS** 181. Barrows and gilts mostly \$2 lower. US No. 1-2 215-250 lbs. barrows and gilts 41.25-42, No. 1-3 210-250 lbs. 40.00-41, few No. 2-3 205-210 lbs. 38.00-39, few No. 1-3 185-195 lbs. 37.75-38.50. **SOWS** \$1 lower US No. 1-3 320-510 lbs. sows 32.00-35.25, few No. 2-3 335-500 lbs. 31.00-32. **BOARS** 26.50-29.50.

**FEEDER PIGS** 67. US No. 1-3 30-40 lbs. feeder pigs 15.00-23 per head. No. 1-3 40-50 lbs. 20.50-23.50, No. 1-3 60-85 lbs. 24.00-30.50 per head.

**SHEEP** 11. Lot Choice 90 lbs woolled slaughter lambs at 45.00.

### Chambersburg Auction

Chambersburg, Pa.

Thursday, October 27

Report supplied by PDA

**CATTLE:** 445. Compared with last week's market: Sl. cows 1.75-2.25 lower. Sl. steers: (few) Good 55.75-59.85; (few) Standard 47.85-53.50; Utility 37.00-45.00. Sl. heifers; (few) Choice 55.75-60.00; (few) Good 50.00-55.85; (few) Utility 42.00-45.00. Sl. cows: Utility & Commercial 35.00-38.85; Cutters 33.75-37.00; Canner & L. Cutter 29.25-34.00; Shells down to 25.00. Sl. bullocks; (few) Standard 47.75-50.85. Sl. bulls: (few) Yield Grade No. 1 1195-1730 lbs. 44.75-51.75; (few) Yield Grade No. 2 850-1250 lbs. 35.25-44.10.

**FEEDER CATTLE:** Steers (few) Medium-Frame No. 1 350-550 lbs. 41.50-48.00.

**CALVES:** 497. Vealers steady to 2.00 higher. (few) Choice 85.00-99.00; (few) Good 65.00-80.00; 70-105 lbs. 47.00-53.00; Utility 60-90 lbs. 40.00-47.00.

**FARM CALVES:** Bulls mostly 25.00 higher. Hol. Bulls 90-125 lbs. 60.00-106.00, mostly 85.00-100.00; few Hol. Heifers 90-130 lbs. 54.00-64.00.

**HOGS:** 52. few lots US No. 1-2 220-230 lbs. 39.75-40.35, lot No. 1-3 188 lbs. at 34.25; Sows US No. 1-3 300-550 lbs. 27.50-33.00.

**FEEDER PIGS** 23. (few) lots US No. 1-3 25-30 lbs. 7.50-10.00 per head.

**SHEEP:** 25. 80-100 lbs 44.50-52.00, few Sl. ewes 11.00-13.00.

**GOATS:** 3. few Large 16.00-18.00.

