

A new pivot-tongue mower-conditioner from Sperry New Holland cuts a 12-foot swath on either the right or left side of the tractor. Wide conditioning rolls allow a choice of a wideswath or windrow forming. Hydraulic guard angle control is optional.

### New MC has 12-foot cut

NEW HOLLAND — A new pivot-tongue mower-conditioner from Sperry New Holland handles a 12-foot cut and places the crop in either a wide swath or a windrow. The conditioner rolls are over 9-feet wide to allow for wide swath curing in humid weather. As an alternative, the crop can be deposited in a windrow for baling or chopping without raking.

The new Model 499 mower-conditioner is hydrostatically driven and features a Rolareel header that converges 12 feet of crop to the 9-foot-wide intermeshing conditioner rolls without the use of an auger. Twin, counter-stroking sickles are gear driven from both sides for easy service and minimum vibration.

The header is separate from the conditioner which is mounted in the main frame to minimize bounce and improve flotation in rough fields. Hydraulic guard angle control is available as an option.

Previous pivot-tongue units shared the "499's" ability to cut from either the right or left side of the tractor but didn't have the wide-swath capability of the new haymaker. The ability to spread the crop into a faster drying, wider swath makes it a better match for higher rainfall area alfalfa growers. The 12-foot cut provides a larger windrow to better match the higher harvesting capacity of today's forage harvesters and balers.

### Agway appointment

SYRACUSE, NY — Norma J. Bosserman, Camp Hill, has been named district manager of the Pocono district of Agway's leasing subsidiary, Telmark, according to Thomas M. Cowling, president, Telmark Inc.

Bosserman, a graduate of Thompson Business College, joined Telmark in 1980 and served as region leasing supervisor. She has held several other positions within Agway, the Department of Transportation of the Commonwealth of Pennsylvania, and others.

In her new position, Bosserman will be supervising leasing activities in 12 counties in Northeastern Pa. and 13 counties in NJ.



Norma Bosserman

### New seed sales rep

SHIREMANSTOWN — John D. Thompson, R4 New Castle, has joined Beachley-Hardy Seed Company as a sales representative in Western Pennsylvania, according to Hugh MacWilliam, General Manager. Beachley-Hardy is a division of Pennfield Corporation, Lancaster.

Thompson earned his B.S. in Agronomy from Penn State University. Prior to joining Beachley-Hardy, he was an agronomist with Ashland Landmark Cooperative, Ashland, Ohio.



John Thompson

## Binkley - Hurst holds field day

LITITZ — Tractors by Case and tillage equipment by Rhino Products were the featured attractions during an October 18 field day sponsored by Binkley and Hurst Bros., Inc., Lititz.

Staged along Newport Road, near Rothsville, the one-day event began with a morning presentation by factory representatives, followed by lunch and a field demonstration lasting until 3 p.m.

Supplying the pulling power for the day's activities, J.I. Case took this opportunity to debut its 94 series tractors for the first time in Pennsylvania.

This year's 94-series units feature on-board computers which provide digital feedback for such functions as engine and PTO rpm's and miles-per-hour. Of particular interest to farmers was the series "true ground speed sensor" that monitors wheel slippage permitting operators to select transmission speeds more efficiently.

Also on hand were the company's 2394 and 2594 models featuring 24-speed transmissions.

Though the spotlight was clearly on Case's 94 series, Marketing Representative Al Chapman pointed out that one of the purposes of the field day was to acquaint



Inspecting one of Rhino Products' new disc harrows are Field Sales Manager Andy Pinto, and Rhino's Chief Engineer, Charlie Johnson.

area farmers with the special financing, rebates, and other incentives available to those interested in purchasing one of the older 90-series models.

Taking care of the day's tilling chores was Rhino Products, the Tennessee-based manufacturer of disc harrows and cutters. Heading this year's line-up were two all-new products, the 118 Double

Offset Disc Harrow and the 890 Coulter Chisel Plow.

With about 20 tractors and plenty of Rhino discs on hand, the surrounding acreage was soon churned to flour consistency, and Leonard Hurst of Binkley and Hurst, was pleased with the attendance that exceeded 200 farmers.

## York Farm Credit names 2

YORK — Farm Credit Associations of York have announced two loan officer appointments.

James K. Sigler has been appointed Senior Loan Officer in the York Branch Office.

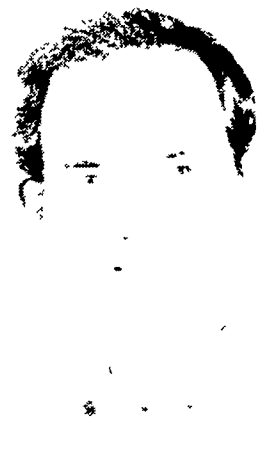
He most recently had been serving as loan officer for the York Branch. In his new position, Jim will continue to be responsible for providing agricultural credit in south central and southwestern York County.

He is a native of Western Pennsylvania. He received a B.S. Degree in Ag Education from Penn State University in 1961. He taught vocational agriculture two years at Northeast-Bradford High School, Rome, and three years at Marathon Central High School in New York State. Prior to joining Farm Credit in February 1980, Jim owned and operated a 400 acre, 70 cow dairy farm in Broome County, New York.

Glenn E. Brake has been appointed Loan Officer in the



James Sigler



Glenn Brake

Chambersburg Branch Office.

He most recently had been serving as Field Representative for the Chambersburg Branch. In his new position Glenn will be responsible for providing agricultural credit in western

Franklin County.

He is a native of Franklin County and was raised at Oakleigh Farm, which is a 400-acre dairy operation. He received a B.S. Degree in Dairy Science from Penn State University in 1982.

## White introduces 2 disks

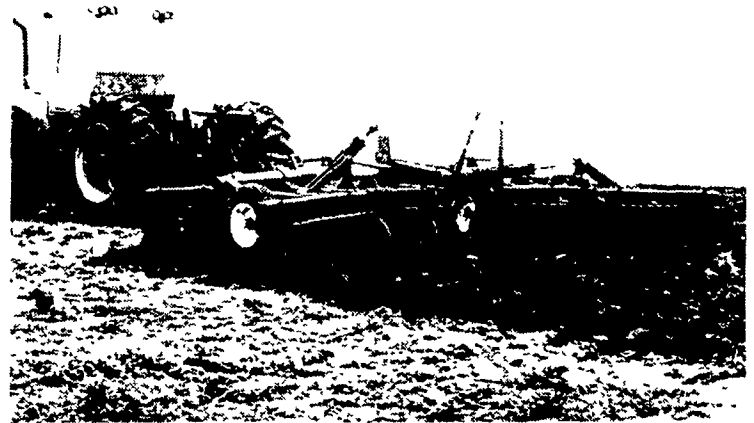
OAK BROOK, IL — White Farm Equipment Company introduces two new stronger disks — the 273 and 274 — for all disking purposes.

The new disks feature a larger, heat-treated gang bolt, heavy-duty bearings and larger, thicker blades.

New 273 and 274 disks carry a gang bolt that is 2.3 times stronger than earlier models. It is heat treated and 1½ inches in diameter, giving it added strength. Also, the bumpers are formed from ductile steel, which is stronger than the usual grey iron.

New heavy-duty bearings have large inner rings to give the spools more support — making it stronger under bending loads. This bearing life is greatly increased with a nylon-ball retainer and a wider metal shroud protects the bearing seals. To protect the bearings against rocks, White Farm has added a long bearing hanger to shield the lower part of the heavy-duty flange.

Blades on the new 273 and 274 are 10 percent thicker and available in three sizes: 20-inch, 22-inch and the new 24-inch. These sizes coupled with the two blade spacings allow farmers to choose the disk to fit their operation. For incorporation, some models of the 273 have 7½-inch blade spacing, and for multi-purpose disking in the spring or



White Farm Equipment's new 273 disk.

fall, there are 273 or 274 models with 9-inch blade spacing.

White Farm has designed the gangs to work better and last longer by using shock-absorbing spring standards. Adjustable scrapers, which are heat treated and reversible, are used to prevent plugging. The 20-degree gang flotation range provides for better

coverage in uneven ground.

Overall length of the disk is shorter than many other disks because of the front gang's unique squadron design. The 273 is available in three models with a 7½" spacing, ranging in width from 17'5" to 24'7". For a disk with 9" spacing choose from seven models ranging in width from 17'10" to 33'4".

IT'S MAGIC  
How quickly  
You Get Results  
From Our  
Classifieds!

PHONE  
717-394-3047  
or 717-626-1164