

Public Auction Register

Closing Date Monday 5:00 P.M.
of each week's publication

FRI. OCT. 28 - 11 AM
Public Auction of Cattle.
Located in Stafford, NY, 8
mi east of Batavia, 2 mi.
east of LeRoy on Rt. 5, use
exit 47 or 48 of the New
York State Thruway.
Robert and Margie Acomb
and Family, Owners.
William Kent, Inc., Auc-
tioneer.

FRI. OCT. 28 - 11 AM
Public Auction of Real
Estate. Located in
Southern York Co., PA,
Rt. 74 South to cross road
of 851 and 74 take 851
left to Lay Rd. to 2nd
cross road turn left, follow
through on Cold Cabin
Rd. to site. Leon A.
Stoltzfus, Owner. E.M.
Murry Assoc., Auc-
tioneers.

FRI. OCT. 28 - 1:30 PM
Public Auction of Pigs.
Located at Westminster
Livestock Auction,
Westminster, MD.

FRI. OCT. 28 - 7:30 PM
Public Auction of Feeders.
Located at Wyalusing
Livestock Market, Rt. 6,
Wyalusing, PA.

FRI. OCT. 28 - 1 PM
Public Auction of Farm.
Located off I-83 at exit 1,
take #816 toward
Stewartstown to Adams
Electric Coop Bldg., turn
right, go to Ridge Rd.,
turn left, follow Ridge Rd.,
2 mi. to sale on right. Pro-
duction Credit Assn. of
York, Owner. Blaine N.
Rentzel, Auctioneer.

FRI. OCT. 28 - 12:30 PM
Public Auction of Cattle.
Located on the Gordon

Wood Farm at the junc-
tion of Rt. 6 and 660 next
to the Y Drive Inn
Theatre, 6 mi. from
Mansfield and 4 mi. from
Wellsboro, PA. Dale and
Ida Butcher, Owners. Gor-
don Wood, Sale Manager.

SAT. OCT. 29 - 11 AM
Public Auction of Horses.
Located at Keister's Mid-
dleburg Auction Sales.

Inc., Rt. 555, 3 mi east of
Middleburg, PA, 5 mi
west of Selinsgrove, PA.
Don and Walt Keister,
Owners. Ray Long and
Dave Ives, Auctioneers.

SAT. OCT. 29 - 1 PM
Public Auction of Cattle.
Located at Farmer's
Livestock Exchange, Win-
chester, VA, Intersection
of Rt. 37 and Rt. 50. Gor-
don Schubert, Manager.

SAT. OCT. 29 - 8:30 AM
Public Auction of Real
Estate, Antiques, Collec-
tibles, Sedan and
Household Items. Located
on Rt. 897, in the village

of Kleinfeltersville,
Lebanon Co., PA. Mamie
McElhenny Estate
Dockey, Dockey and Dep-
pen, Auctioneers

SAT. OCT. 29 - 11 AM
Public Auction of Real
Estate. Located in Lit-
tlestown, Adams Co., PA.
Rt. 194 south from
Hanover to Littlestown,
turn right on Basehoar
School Rd., 1 mi. to farm
lane on left. S. Edward
Murphy, Owner. Blaine N.
Rentzel, Auctioneer.

SAT. OCT. 29 - 10 AM Ag-
Industrial Equip. Co. An-

nual Fall Auction, 1207
Telegraph Road, Rt. 273
Rising Sun, MD.

SAT. OCT. 29 - 9:30 AM
Public Auction of Line
Equipment, Trucks and
Vehicles. Located at the
Linden Airport off Rt. 179
in Linden, NJ. Hellens
Trucking, Owner.
Vilsmeier Auction Co., Inc.

SAT. OCT. 29 - 1 PM
Public Auction of Farm.
Located 1 mi. west of
Graz, Upper Dauphin
Co., PA, 40 mi. north of
Harrisburg. John B. and
Sadie S. Fisher, Owners

George and Mike Deibert,
Auctioneers

SAT. OCT. 29 - 9 AM
Public Auction of Real
Estate, Antiques,
Household Goods, Farm
Equipment, Guns and
Coins. Located along E.

Farmersville Rd., between
Brownstown and
Hinkletown, Farmersville,
West Earl Twp., Lancaster
Co., PA. Mary M. Martin
Estate. T. Glenn and
Timothy G. Horst, Auc-
tioneers.

FEATURING FIRST AND THIRD MONDAY EACH MONTH GRADED FEEDER PIG SALE

1:30 p.m. Sharp!

Telephone 302-724-2016 or 284-4541

Tele-O-Auction - 302-284-4912

* Tele-O-Auction - Bid over the telephone.

* Easy to reach - Rt. 13, on South Bound Lane,
approximately 10 miles South of Dover,
Delaware.

* Quick Service - Load & Unload.

* No Dealer pigs

* Pigs received after 7 a.m. until 11 a.m.

* Consignors - Paid day of sale.

* Veterinarian inspection on premises - Dr.
Towers.

* State Graded

* Pseudorabies Free State.

Auctioneers - Harry Barrett - Chester Lee
Carroll

AUCTIONS OF ALL TYPES

PUBLIC AUCTION



**95 ACRE
HOG & STEER FARM
MONDAY, OCTOBER 24, 1983**

Sale Time: 2:00 P.M.

LOCATION: Take Route 322 to East
end of Ephrata. Turn left on Hahnstown
Road, first road left after overpass.
Continue on Hahnstown Road ap-
proximately 2 miles to farm on left.
Ephrata and East Cocalico Townships,
Lancaster County, Pa.



2½ STORY SANDSTONE & FRAME DWELLING BUILT IN 1862

containing on first floor: large eat-in kitchen
with built-in cabinets; family room; living
room; utility and laundry room; 1 bedroom;
full bath; wood storage area.

Second Floor: 4 bedrooms; attic area above
second floor; full basement, partially con-
creted; gas hot water heater.

3 CAR DETACHED
CEMENT BLOCK GARAGE;
LARGE BANK BARN

with feed lot for approximately 125 steers

20 x 75 Foot STAVE SILO
with Unloader and Bunk Feeder;
10 x 40 Foot SILO

HOG OPERATION CONSISTS OF:
35 Crate Farrowing House; 70 Sow Gestation
Building; 40 Sow Breeding Building; Nursery
with 560 Head Capacity;

FACILITIES TO FATTEN A
TOTAL OF 250 HOGS

Tobacco Shed converted to storage and shop
area with lower level remodeled to fatten hogs.

7500 BUSHEL GRAIN BIN

- * Small Corn Barn
- * 200 Amp. Service
- * Mature Shade
- * 75 Acres Tillable
- * Sandstone Type Soil
- * Well With Pressure System
- * Double Throw Switch
- * Stream
- * 12 Acres Woodland
- * Small Pasture

INSPECTION: At Open House, Saturday,
October 15th and October 22nd, 1983, from 12
noon to 3 p.m., or by appointment.

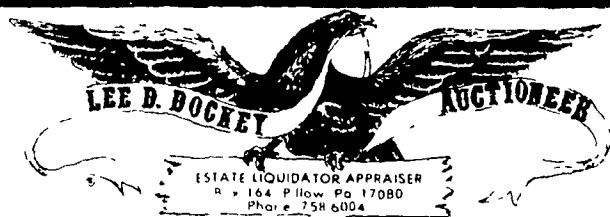
To avoid disease in hogs all persons going
through hog houses must use precautionary
measures provided by tenant. Hog houses will
be open at OPEN HOUSE or can be seen by
calling ISAAC RAY SENSENIG at 717-733-9379
for appointment. Balance of farm can be in-
spected anytime. All herein information is
believed to be accurate, but is being used for
advertising purposes only.

TERMS: 10% down day of Auction. Balance
at settlement, April 1, 1984. Financing
available by prior written approval. For
transportation to inspect property, or to
discuss financing, call PAUL E. MARTIN,
Auctioneer, at 717-733-3305.

NOTE: This is a real homestead type farm
with many possibilities. See it soon and prepare
to buy.

Auction By:
**HARVEY Z. &
REBECCA R. FOX**

Thomas H. Wentz, Attorney
Auction Conducted By:
John E. & Paul E. Martin, Auctioneers
Ephrata, PA 717-733-3305



PUBLIC SALE SATURDAY, OCTOBER 29, 1983

8:30 A.M.

Located on Route 897, in the Village of Kleinfeltersville
(Lebanon County), Pennsylvania.

REAL ESTATE

2½-Story Frame Dwelling Having A Frontage Of 97' And A Depth Of
247.5', Containing 84 Perches...4 Rooms And Half-Bath On 1st Floor...3
Bedrooms On 2nd Floor...Hot Water Oil Furnace...For Additional Informa-
tion Or Inspection Phone 717-758-6004. Real Estate To Be Offered At 1:00
P.M.

ANTIQUES & COLLECTIBLES

2-Pc. Soft Wood Corner Cupboard with 12-Pane Door, 2-Door Bottom; (4)
Blanket Chests - 1 with Orig. Red Paint & 4 Small Green & Yellow Raised
Panels on Front & Original Grablock; 3-Pc. Oak Bedroom Suite; 3-Pc. Late
Victorian Living Room Suite; Round Glass China Closet with Claw Feet;
Round Oak Table with Claw Feet; (4) Oak T-Back Chairs; Assortment of
Barroom Chairs - Some Decorated; Oak Extension Table; Plank Bottom &
Cane Seated Rockers; Plank End Washstand; (2) Oak Case Sewing
Machines; Oak Ice Box; Child's Arrow Back Plank Bottom Rocker;
Wicker Doll's Carriage; Walnut Victorian Corner Stand; Carved Corner
Chair; Keystone Upright Piano; Plano Stool; Record Player; Wallace Nut-
ting Prints; Selection of Picture Frames; Assorted Mantel Clocks - 1 in
Tramp Art-Style Steeple Shaped; Rayo Lamp; Tiffany-Type Table
Lamps; (2) Reverse Painted Glass Electric Lights; Kerosene Lamps;
Brass Buckets; Coffee Grinder; Baskets; Wooden Rake; Richland Tire
Pump; Assorted Christmas Decorations; Lg. Selection of Postcards;
Assortment of Old Clothing - Circa 1900, Etc.; (3) Quilts; (2) Coverlets - 1
Marked "Emanuel Melly Lebanon 1848"; Blue Homespun & Misc. Linens;
China Doll; Assorted Animal Character Atomizer Bottles; Lg. Selection of
Adv. Items - Including Huber Bros. Commemorative Items; Assorted
Quadruple Plate Items; Many Pcs. of Carnival Glass; Blue Spatter Cup,
Saucer and Plate; Flow Blue; Early Adams Plate; Assortment of China
Dresser Lady Dolls; Cut Glass Bowl, Punch Bowl, Etc.; Chocolate Pots;
Copper Lustre; Roseville Pottery; Lg. Selection of Pressed, Pattern &
Depression Glass; Selection of Fiesta Ware; Lg. Selection of Jewelry - In-
cluding Pocketwatches; Numerous Other Items.

1942 PONTIAC SEDAN HOUSEHOLD ITEMS

RCA Floor Model Color TV; Caloric Gas Stove; Whirlpool No Frost
Refrigerator; Electric Sewing Machine; 3-Pc. Living Room Suite; Sofa
Bed; 3-Pc. Bird's Eye Maple Bedroom Suite; Upholstered Chairs; Porch
Swing; Ladders; Dishes; Pots; Pans; Etc.

TERMS: Real Estate - 10% Down. Further Terms And Conditions To Be
Given Day Of Sale. Personal Property - Cash. Personal Checks Accepted
Only From Persons Having An Established Account With Auctioneer Or Ap-
proval Prior To Day Of Sale.

MAMIE McELHENNY ESTATE
Helene Gockey, Executrix

HENRY J. STEINER, ATTORNEY
DOCKEY, DOCKEY & DEPPEN, AUCTIONEERS
PHONE: 717-758-6004

BUTCHER COMPLETE HERD DISPERSAL PLUS

20 fresh & close springers that will satisfy
the most critical buyer from our herd &
other selections.

Sale will be held on the Gordon Wood
Farm at the junction of Rt 6 and 660 next
to the Y Drive in Theatre, 6 miles from
Mansfield and 4 miles from Wellsboro,
Pa.

FRIDAY - OCT. 28

at 12:30 Sharp

92-HI-GRADE HOLSTEINS-92

Including 3 ID grades, 6 line backs, 1 red &
white holsteins.

Butcher herd consist of 33 mature cows in all
stages of lactations, 8 bred hrs., due sale time
thru Dec., 8 breeding age & 23 from calves to
yearlings, plus the 20 close & springers men-
tioned above. Interstate tested, preg. ex.,
charts day of sale.

Terms: Cash or Good Check.

Owners

DALE & IDA BUTCHER

Ph. 717-673-3507

Barn-717-364-5416

Sale Manager

GORDON WOOD

Mansfield, Pa.

Phone 717-549-4901

For the most in advertising coverage and
preparing your sale call Woods Auction Ser-
vice.

Lunch Available

ACOMB A-9 FARMS COMPLETE JERSEY DISPERSAL

**70 REGISTERED JERSEYS,
JERSEY SEMEN AND
SHOW EQUIPMENT SELL**

FRIDAY, OCT. 28, 1983

at 11:00 A.M.

Stafford, NY, 8 miles east of Batavia, 2
miles west of LeRoy on Route 5. Use exit
47 or 48 of the New York State Thruway.

Bob and Marge have purchased a ranch in
Lake City, Florida, and will be moving a select
herd of Simmental and Limousin beef cattle
and Appaloosa horses. There will be no dairy
operation; therefore we will be selling cows,
embryo transplant and natural bred heifers,
calves and bulls.

Featuring a select group of offspring from
the Midnight Comedy Syndicate ("Comedy's
Index: +1736m and +97f and +248f.) Off-
spring of Chocolate Soldier, Regle Premier
Deni, Master Milestone C, and A-9 Fortune's
Tribute.

This is a young herd with worlds of
production, pedigree, and type, and bred for
your-round freshening.

Sale order will be:

Cattle - Semen - Show Equipment

Cattle will be tested for interstate shipment.

For details see the

October JERSEY JOURNAL

TERMS: Cash or good check day of sale.

Owners,

ROBERT & MARGIE ACOMB & FAMILY

Ph. 716-768-7164

WILLIAM KENT, INC.
SALE MANAGER & AUCTIONEER
Bergen, NY Ph. 716-494-1890