



Virginia Auction Summary

October 6-12
Report supplied by VDA
Total of Va. Weekly Feeder Cattle Auction Receipts: 8,185.
TREND: Steady to \$3 higher.

Southwestern, Va. Auction Summary

October 6-12
STEERS: 300-500 lbs. Medium 1 56.00-67.50; Large 1 54.00-67.00; Small 1 49.50-60.00. 500-700 lbs. Medium 1 50.50-61.00; Large 1 55.00-64.00; Small 1 42.00-54.00. 700-

1000 lbs. Medium 1 45.00-54.00; Large 1 48.00-55.00; Small 1 43.00-48.50.

HEIFERS: 300-500 lbs. Medium 1 40.00-52.00; Large 1 42.50-53.50; Small 1 37.50-49.00. 500-700 lbs. Medium 1 40.50-48.50; Large 1 40.50-41.25; Small 1 32.00-43.25. 700-900 lbs. Medium 1 37.50-48.00; Large 1 35.00-45.50; Small 1 34.25-40.50.

Southeast Va. Auction Summary

October 6-12
STEERS: 300-500 lbs. Medium 1 53.00-57.75; Large 1 59.00-62.25. 500-700 lbs. Medium 1 51.50-56.75; Large 1 57.75-58.00.

HEIFERS: 300-500 lbs. Medium

1 38.50-45.00; Large 1 45.00-49.00; Small 1 38.00-43.00. 500-700 lbs. Medium 1 38.25-45.00; Large 1 41.50.

Northern Va. Auction Summary

October 6-12
STEERS: 300-500 lbs. Medium 1 52.00-62.00; Large 1 54.00-61.50; Small 1 48.00-57.00. 500-700 lbs. Medium 1 52.00-60.50; Large 1 52.00-59.00; Small 1 46.50-55.00. 700-1000 lbs. Medium 1 48.00-56.00; Large 1 51.00-56.75.

HEIFERS: 300-500 lbs. Medium 1 40.00-48.00; Large 1 43.50-49.00; Small 1 34.00-44.00. 500-700 lbs. Medium 1 39.00-49.85; Large 1 44.00-49.00; Small 1 39.00-44.00. 700-900 lbs. Medium 1 39.00-49.85.

Livestock market and auction news

Monday's auctions not covered due to holiday

Penns Valley Livestock

Centre Hall, Pa.

Tuesday, October 11

Report supplied by auction

Beef Cows: Utility and Commercial 38.25-41.75; Cutters 35.75-38.00; Canners 31.25-35.50; Shells 25.85.

Heifers: Commercial 36.00-38.75. Steers: Standard 43.35-48.25.

Bulls: Good 52.00-54.10; Standard 44.70-50.50.

Feeder Cattle: 300-500 lbs. large frame 44.70-52.50; 300-500 lbs. small frame 41.25-44.50; 500-700

lbs. large frame 39.00-46.25; 500-700 lbs. small frame 38.00-44.00.

Veal Calves: Choice 80.00-88.00; Good 66.00-79.00; Standard 54.00-65.00; Utility 48.00-55.50.

Farm Calves: Bulls 70.00-87.00; Heifers 55.00-61.00.

Hogs: 41.50-44.00.

Sows: 35.00-37.50.

Boars: 25.50-27.25.

Shoats: 25-30 lbs. per head 6.00-10.00; 30-35 lbs. per head 8.00-12.00;

35-50 lbs. per head 12.00-14.00.

Lambs: 31.00-38.00.

Sheep: 9.00-14.50.

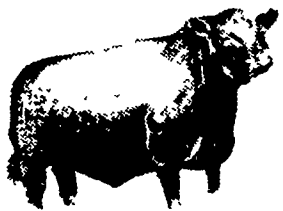
Goats: 14.00-23.00.

LEESPORT MARKET & AUCTION, INC.

North end of Leesport, PA

Turn East off Route 61

"WHERE FRIENDS MEET"



BERKS COUNTY'S ONLY WEEKLY CATTLE & SWINE AUCTION — WEDNESDAY AT 1 P.M.

FARMER'S MARKET Every Wednesday, 10 A.M. TO 9 P.M.



Garden Fresh Fruits & Vegetables - Bakery Fresh Cakes, Pies and Buns - Butcher Fresh Meats & Cheese - Sporting Goods - Clothing - Furniture - Jewelry - Used Items & Collectibles.

PHONE: 215-926-1307

LEROEY WEIST & JOHN WEIST, MGRS.

"SPECIAL"

FEEDER SALE

TUES. OCT. 8 7 P.M. SHARP

WESTMINSTER Livestock Auction Ph. 301-848-9820



HORSE MARKETS

New Holland Horse

New Holland Sales Stables Monday, October 10

Report supplied by auction

Reported receipts of 323 head of horses, mules, and ponies. Killer market: lower, otherwise steady.

LOCAL

Work Horses from Va. Pairs,

2350.00-3000.00; Singles, 875.00-1200.00.

Better Horses 400.00-875.00.

Driving Horses 275.00-1300.00

Riding Horses 250.00-350.00.

Lightweight killers 250.00-325.00;

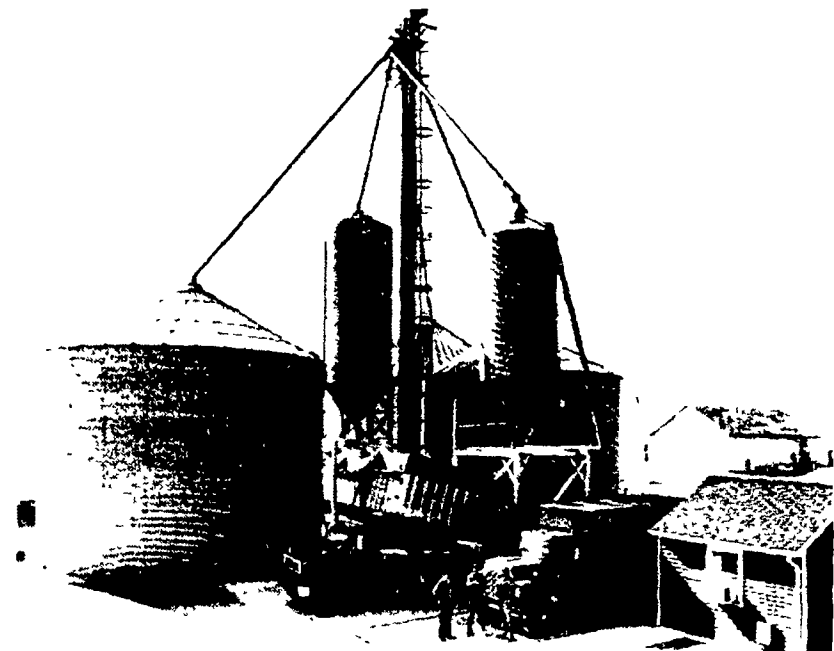
Heavyweight killers 350.00-430.00

Mares 25.00-75.00; Colts 15.00-25.00; Geldings 25.00-75.00; Larger ponies 125.00-175.00.

WE NEED YOUR CORN

WE OFFER

- ★ Unloading Hours to fit your needs
- ★ Friendly & Courteous Service
- ★ Prompt Payment
- ★ Custom Drying & Storage
- ★ Trucks For Farm Pickup
- ★ 60 Foot 50 Ton Scale
- ★ Spot & Contract Prices



We Buy & Sell Ear Corn, Shelled Corn & Wheat

R.K. VOGT GRAIN

"Serving Farmers For 18 Years"

Rd 1, Marietta, PA
717-653-2510

