

Livestock market and auction news

Hagerstown Hay

Martin's Elevator
Wednesday, October 5
Report supplied by auction

10 loads.
Alfalfa 145.00; Alfalfa and Grass 116.00; Clover & Timothy 115.00; Timothy 115.00; Straw 40.00-58.00; Corn fodder 50.00; Rye seed 4.70 bu.

Oklahoma Cattle

Wednesday, Oct. 12
Report supplied by USDA

Estimated Receipts 8,000
Same Day Last Week 13,458
Trade moderately active.
Demand good on Feeder Cattle under 600 lb. Moderate on those over 600 lb. Feeder Steers and Heifers steady. Majority receipts Medium Frame 1 and Mixed 1-2 400-700 lb. Feeder Steers and Heifers. Moderate attendance of buyers.

FEEDER STEERS: Medium few Large Frame 1 lot 380 lb. 68.50; 400-500 lb. 64.50-70.10; 500-600 lb. 60.75-65.80, load 505 lb. 65.40; 600-700 lb. 56.40-58.90, part-load 620 lb. 59.60; few 700-775 lb. 58.00-58.75; 800-935 lb. 53.90-56.00; lot 985 lb. 50.80. Small Frame 1 400-500 lb. 62.00-64.00; 550-600 lb. 58.30-60.25; lot 680 lb. 56.00. Medium and Large Frame Mixed 1-2 395-500 lb. 61.00-62.60; 500-600 lb. 57.00-60.70; 600-700 lb. 54.50-57.10; 700-800 lb. 54.50-54.70. Medium and Large Frame 2 500-700 lb. 51.00-53.60. Large Frame 2 Holsteins lot 990 lb. 41.40.
FEEDER HEIFERS: Medium few Large Frame 1 350-400 lb. 54.75-57.80; 400-500 lb. 51.50-56.60; 500-600 lb. 50.20-54.00; 600-700 lb. 50.70-53.00; lot 775 lb. 48.10. Small Frame 1 400-600 lb. 50.00-50.50. Medium and Large Frame Mixed 1-2 300-500 lb. 49.50-54.00; 500-600 lb. 48.00-51.50; few 600-700 lb. 47.00-



47.75. Medium and Large Frame 2 300-750 lb. 42.50-45.90.
Compared to last Wednesday, Feeder Steers and Heifers under 500 lb. firm to 2.00 higher; Feeder Steers over 500 lb. steady to 1.00 lower, Feeder Heifers over 500 lb. mostly 1.00 lower. Demand was Good on Cattle under 500 lb., fair on cattle over 500 lb. Trade was fairly active on Feeder Steers and Heifers under 500 lb. as recent rains broadened outlets for calves. Trade moderate on cattle over 500 lb. Slaughter Cows were .50-1.00 higher with breaking Utility and

Commercial 2-3 34.40-37.60; Cutters and boning Utility 1-2 30.50-36.50; canners and low-cutters 25.00-31.75, mostly 27.50-30.00. Trade on Slaughter Bulls rather slow and demand light as bulls finished the week 1.00-2.00 lower. YG 1 1200-1500 lb. bulls sold from 43.75-46.10, few 1100-1200 lb. low-dressing 39.60-40.10; few 1600-1800 lb. 46.10-48.20, with two head 1700 lb. very high dressing at 50.50. Salable receipts this week estimated at 19,000 head of cattle compared with 24,569 head last week and 23,412 head last year. Bulk of receipts consisted of Feeder Steers and Heifers; Cows and Bulls made up 13 percent of estimated supply.

East Coast Carlot

Wednesday, October 12
Report supplied by USDA

Compared to Wednesday's close: Veal trade moderately active. Prime special fed veal generally steady. Good and Choice boning veal steady in limited comparison; no sales inshipped veal reported. Spring lamb market not well established early, few sales 55 lbs. down 8.00 higher than last week; 55 lbs. 5.00 higher than last week. Boneless Beef 85 pct Chem Lean steady to firm with last week in limited test. Compared to last week beef trimmings .75 to 1.25 higher.

VEAL CARCASS

Prime (Special Fed)

Hide On 418 Head

220-280 lbs. 182.00, few 180.00, generally steady.

Good & Choice

Boning Type

Hide On

Northeastern Suppliers: all steady. 65-75 lbs. LTD 78.00; 55-64 lbs. LTD 76.00; 45-54 lbs. LTD 74.00; 35-44 lbs. LTD 72.00; 34 lbs. down LTD 70.00.

Inshipped: No sales reported.

SPRING LAMB BEEF

Choice and Prime 3-4

9 1/2 Loads

55 lbs. down 120.00, 8.00 higher; 55-65 lbs. 120.00, 5.00 higher; 65-75 lbs. 120.00, 5.00 higher.

BONELESS BEEF

(US and Canadian Origin)

4 loads

85% Chem Lean Fresh 98.00.

99.00 PT loads steady to firm with last week.

75% Chem Lean Fresh 79.00.

BEEF TRIMMINGS

3 loads

Compared with last week 65% Chem Lean Fresh 66.75, .75 to 1.25 higher.

50% Chem Lean Fresh 43.00, 1.00 higher.

Peoria Cattle

Thursday, October 13

Report supplied by USDA

Compared to last week Slaughter Steers closed steady to firm. Heifers steady, instances .50-1.00 higher. Cows steady to 1.00, instances 2.00-3.00 higher. Bulls steady. Trade active during the week despite the downturn noted in wholesale beef. Best demand centered on Steers and Heifers in excess of 1100 and 950 lbs. respectively. Lighter weight consignments and those containing YG 4's and Good grade discounted and finding narrow outlets. Receipts this week about 1650 as compared to 1948 a week ago and 2458 a year ago.

SLAUGHTER STEERS Choice 2-4 1025-1350 lbs. 59.50-60.50, few packages and loads mostly Choice 2-3 1100-1300 lbs. 61.00. 900-1050 lbs. 59.00-59.50. Good and Choice 2-3 1000-1250 lbs. 58.00-59.25. Good 52.00-58.00 mostly 54.00-58.00. Holsteins: Standard and Good 1-3 1100-1300 lbs. 47.00-51.00, package Choice 3 1300 lbs. 54.00.

SLAUGHTER HEIFERS Choice 2-4 925-1250 lbs. 58.00-59.00. Three loads 970-1025 lbs. 59.50-60.00. 850-950 lbs. 57.00-58.00. Good and Choice 2-3 925-1025 lbs. 56.00-58.00. 850-950 lbs. and few lots Choice 3-4 54.00-56.50. Good 51.00-55.00.

COWS: Cutter and Boning Utility 1-3 34.50-38.00, part load 39.00. Canner and Cutter 1-2 31.00-35.50.

BULLS: YG 1-2 1300-2200 lbs. 46.00-51.00, individual 44.50.

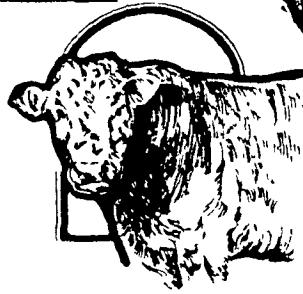
ATTENTION CATTLE FEEDERS

SPECIAL GRADED FEEDER CATTLE SALE

THURSDAY, OCT. 20 - 11 A.M.

All in Lots of 10 or More

- We have 84 head out of NY State: 39 of them are Charolais 45 are black & white faces, weighing from 700-825 lbs.
- Plus 200 locally consigned cattle weighing from 500 to 800 lbs.



Walter M. Dunlap and Sons

Lancaster Stockyards Tel. (717) 397-5136

An Old Line Commission Firm Keeping Abreast With The Times

MELHORN SALES, SERVICE, TRUCKING CO.

40 Donegal Springs Rd., Mount Joy, PA 17552

The only full service company, in this area, to handle the total needs of the poultrymen.

Which Includes:

- DeKalb chicks & started pullets sold by Clay Mumma, Nelson Groff, and David Fahs.
- Complete loading & unloading of pullets & spent hens.
- New modern dollie equipment to move your pullets fast and efficiently with minimum stress to the pullets

Place Your Confidence In A Full Service Company That Wants To Be Worthy Of Your Business

For More Information Phone:
717-653-1102 or 717-653-2787

Monday - Friday 8 A.M. - 4 P.M. ask for Lynn or Wendy



DEKALB



DEKALB



HERDS

FOR OUR

REGULAR MONTHLY SALES HELD IN OUR STATE APPROVED HEATED BARN AT SMOKETOWN QUALITY DAIRY SALES

Located East of Rt. 30 along Rt. 340 near Rt. 896 Smoke town Pa

IF YOU HAVE A GOOD HERD OF DAIRY COWS OR HEIFERS, REGISTERED AND GRADES TO BE SOLD, WE WILL SELL THEM FOR YOU

WE HAVE THE MARKET FOR REGISTERED AND GRADE YEARLINGS OPEN HEIFERS AND BRED HEIFERS

PRIVATE SALES DAILY WE ARE SELLING DAIRY COWS, SPRINGING HEIFERS AND FRESH HEIFERS DAILY EVERY WEEK

NEXT CATTLE SALES

FRIDAY, OCT. 21

11:00 A.M.

See Page D42 For Complete Listing

Also

FRIDAY, OCT. 28

Watch Next Week's Issue For Complete Details

"We aim to please and satisfy customers is our first concern" Years of experience

PHONE 717 393-0930
Gordon W. Fritz
Licensed and Bonded