

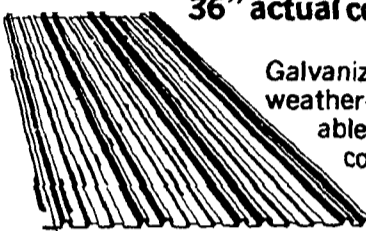
W Wickes Lumber

# YOUR ONE STOP FOR FARM BUILDING MATERIALS



## STEEL ROOFING & SIDING

36" actual coverage



Galvanized finish is corrosion and weather-resistant. Lengths available to fit most of your farm construction needs.

Painted - White, Brown, Red, Tan

8'	10'	12'	14'	16'
\$11.69	\$14.49	\$17.49	\$20.39	\$23.29

**\$45<sup>99</sup>**

Stock Sizes Only  
100 Sq. Ft. High Tensile Steel

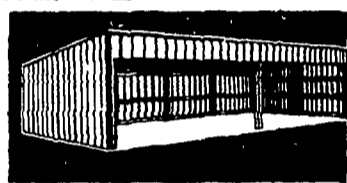
PRICES GOOD THRU OCT 15

## TREATED TIMBERS

The perfect choice for farm buildings! Economical treated boards can be stained, painted or allowed to weather naturally. Durable... creates a safeguard against termite damage and decay.

	12'	14'	16'	18'	20'	22'	24'
4x6	\$10.99	\$12.69	\$14.99	\$18.49	\$20.59	—	—
6x6	\$16.95	\$20.59	\$23.49	\$29.95	\$32.95	\$41.19	\$44.39

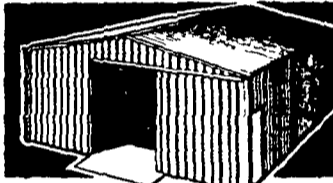
Versatility Plus Long-Lasting Protection!



**THE SOUTH FORK**  
15'-6" x 32'  
Loafing  
Shed

• Optional 16 ft. additions

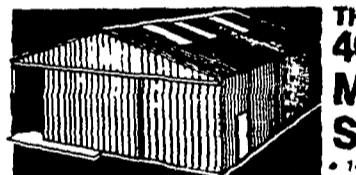
**1365<sup>00</sup>**  
Package



**THE SHERIDAN**  
30' x 32'  
Multi-Purpose  
Building

• 10' sidewall • Optional 8 ft. additions  
• 10' end door

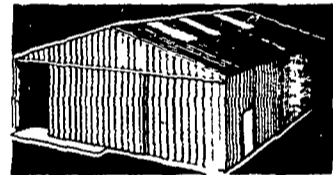
**2999<sup>00</sup>**  
Package



**THE WINCHESTER**  
40' x 48'  
Machinery  
Storage Building

• 14' sidewall • Optional 8 ft. additions  
• 16' end door

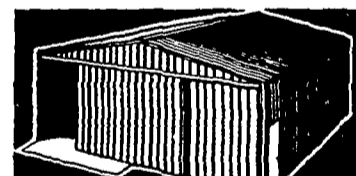
**5880<sup>00</sup>**  
Package



**THE SHENANDOAH**  
42' x 48'  
Machinery  
Storage Building

• 14' sidewall • Optional 8 ft. additions  
• 20' end door

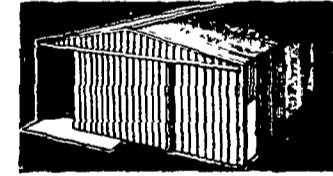
**6188<sup>00</sup>**  
Package



**THE PENDLETON**  
32' x 32'  
Multi-Purpose  
Building

• 12' sidewall • Optional 8 ft. additions  
• 14' end door

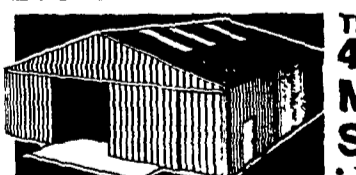
**3400<sup>00</sup>**  
Package



**THE REMINGTON**  
36' x 40'  
Multi-Purpose  
Building

• 12' sidewall • Optional 8 ft. additions  
• 16' end door

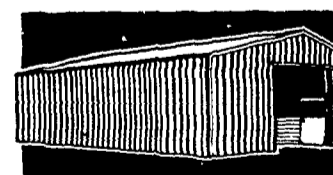
**4229<sup>00</sup>**  
Package



**THE LINCOLNSHIRE**  
48' x 48'  
Machinery  
Storage Building

• 14' sidewall • Optional 8 ft. additions  
• 24' end door

**6877<sup>00</sup>**  
Package



**THE BUCKINGHAM**  
32' x 32'  
Horse Barn

• 12' sidewall • 5 stalls

**5339<sup>00</sup>**  
Package

**Wickes Lumber... Your Best Choice!**

Prices good at the following location only:

1/4 Mile North East of EPHRATA, PA. on Rt. 272  
PH: 717-733-6521 or Lanc. 717-394-9325

Hours: Mon., Thurs., Fri. 8 AM to 8 PM;  
Tues. & Wed. 8 AM to 6 PM; Sat. 8 AM to 3 PM



## Penn State's ag enrollment up 24%

UNIVERSITY PARK — Agriculture's got a bright future in Pennsylvania. Despite seasonal problems, agriculture is the largest single industry in the state, and today's students are responding to its opportunities with an increased interest in agricultural subjects. High school students looking toward careers in ag-related businesses and industries have entered Penn State's College of Agriculture in force.

This fall's freshman class of 442 is one of the largest in some years and is an increase of 24 percent over last year. Sharply declining enrollments, which have been characteristic of colleges of agriculture throughout the country for the past several years, may be a thing of the past at Penn State as student levels stabilize.

"We've got a terrific group this year," said James McCoy, coordinator of recruitment for the College. "We have an increase in freshmen of 36 percent at University Park and an increase of 19 percent at the Commonwealth Campuses. Total enrollment, however, is almost the same as it was last year because of an unusually large graduating class."

"But more important than size, this is a class with a great deal of promise. We are especially pleased so many have been able to start their studies at University Park so they can join Ag student clubs, organizations and facilities and get to know our ag faculty from the beginning," continued McCoy.

Penn State's College of Agricultural concentrates on the personal approach to student information for high school students, their families and teachers. McCoy and faculty advisors encourage interested college bound students to visit the College, ask questions and see what college will be like.

The College also sponsors group visits for prospective students from Pennsylvania high schools. In addition to tours of specialized research and teaching areas — greenhouses, laboratories, farms, and barns — and visits to individual departments, visiting groups often get the chance to meet Ag student groups for fun and more information about college life.



Machine Work  
Welding &  
Farm Supplies  
Hardware

### CUSTOM BUILT WOOD & COAL FIRED BOILERS

- Welders & cutting torches
- Custom made farm gates, etc.
- Custom built high pressure washers
- Stainless steel, aluminum and spot welding.
- UPS Service

**D.S. MACHINE SHOP**  
DAVID E. STOLTZFUS

3816 E. Newport Road  
Gordonville, PA 17529  
1 Mile East of Intercourse on Rt. 772  
Write or Call 717-768-8569  
If no answer call: 717-768-3568