

Livestock market and auction news



THE OLD FARMER'S ALMANAC
OCT. 3-9, 1983
 During hunting season, be aware of what you wear.
 Forest fire danger now Columbus Day to be celebrated on the 10th
 New moon Oct 6 (Thurs) Average length of days for the week,
 11 hours, 31 minutes Sputnik I launched by Soviet Union Oct 4,
 1957 Chicago fire killed 300, left 100,000 homeless Oct 8-9, 1871
 Pope Paul VI first pontiff to visit the United States, Oct 4, 1965
Never let the bottom of your purse or your mind be seen



Ask the Old Farmer: Please tell me the meaning of the expression he took the rag off the bush PRB Poseyville, Ind
 I think this came from the custom of tying a piece of cloth to a bush on a trail to show someone following where a person changed direction Someone else might come along first and remove the cloth and tie it somewhere else, so it would mean "he threw him off the trail" or "he misled someone"

OLD FARMER'S WEATHER FORECAST
 New England: Sunny, cold nights to midweek cloudy showers south into weekend, then clear
 Greater New York-New Jersey: Week starts sunny, cool, rainy remainder of week, weekend sunny and mild
 Middle Atlantic Coastal: Partly cloudy, unseasonably cool to mid week, showers, warming into weekend, then clear and warm
 Piedmont & Southeast Coastal: Week begins cold and cloudy, rain south and east, showers and mild temperatures through midweek, clear and warm weekend
 (All Rights Reserved Yankee Publishing Incorporated Dublin NH 03444)

Peoria Cattle

Thursday, Sept. 29
 Report supplied by USDA

Compared with last week's close Slaughter Steers .50-1.00, instances 2.00 higher on Choice 3 consignments. Slaughter Heifers were mostly steady. Cows steady to 2.00 higher. Bulls steady to 1.00 higher.

SLAUGHTER STEERS: Choice 2-4 1000-1250 lbs. 58.50-60.00, couple loads and part loads 60.50-61.00. YG 3-4's 1050-1250 lbs. 58.00-58.50. Mixed Good and Choice 2-3 950-1150

lbs. 56.50-58.50. Good 54.50-57.00. Holsteins: Good and Choice 2-3 1150-1300 lbs. 51.00-53.50.

SLAUGHTER HEIFERS: Choice 2-4 900-1100 lbs. 56.50-59.00, part load 900 lbs. 59.50. 850-950 lbs. 56.00-58.00. Package YG 4-5's 55.00. Mixed Good and choice 900-1075 lbs. 55.00-57.50. Good 50.00-55.50.

COWS: Boning Cutter and Utility 36.00-40.00, individual 42.00. Breaking Utility and Commercial 38.00-40.00. Canner and Cutter 32.00-37.00.

BULLS: YG 1-2 1150-2200 lbs. 46.00-51.00, individual YG 1 52.50.

New Wilmington Livestock

Monday, Sept. 28

Report Supplied by PDA

CATTLE 188. Compared with last Monday's market, slaughter cows 50 cents higher. Choice slaughter steers 58.00-60.75, few at 61.75, few Good 54.25-57.00, few Utility 40.75-44.00. Couple Choice slaughter heifers 56.50 & 57.25, couple Good 48.75 & 49.00, few Standard 43.50-45.00. Utility & Commercial slaughter cows 39.00-43.50, couple Commercial 44.25 & 44.50, Cutters 36.00-40.00, Canner & Low Cutter 28.50-36.50, Shells down to 22. Few Yield Grade #1 1160-1655 lbs. slaughter bullocks 46.00-50.50, few Yield Grade #2 1050-1150 lbs. 42.00-43.00.

FEEDER CATTLE: Few Medium & Large Frame #1 430-740 lbs. feeder steers 43.00-48.00, few Holsteins Large Frame 500-700 lbs. 37.00-41.50. Few Medium & Large Frame #1 350-650 lbs. feeder heifers, 40.00-48.00.

CALVES 267. Vealers Good & Choice \$5 higher, Standard weak \$5 lower, one Choice at 85.00, Good 70.00-80.00, Standard & Good 90-125 lbs. 35.00-45.00, 60-85 lbs. 28.00-38.00, Utility 30-80 lbs. 15.00-28.00.

FARM CALVES: Holstein Bulls 95-135 lbs. 75.00-93.00, Holstein Heifers 75-125 lbs. 38.00-50.00.

HOGS 457. Barrows and gilts steady \$1 lower. US No. 1-2 210-240 lbs. barrows & gilts 44.85-46.25, No. 1-3 200-250 lbs. 43.00-44.75, No. 2-3 205-270 lbs. 40.00-43.00, No. 1-3 120-

185 lbs. 30.00-35.00. SOWS 50 cents-1.00 higher, US No. 1-3 260-705 lbs. sows 38.00-44.00. BOARS 30.00-31.75.

FEEDER PIGS 126. US No. 1-3 5-10 lbs. feeder pigs 4.00-7.00 per head, No. 1-3 25-35 lbs. 14.00-20.00, No. 1-3 35-50 lbs. 20.00-28.00, Utility 30-45 lbs. 5.00-13.00 per head.

SHEEP 99. Spring slaughter lambs \$2.00-\$4.00 higher. Choice & Prime 70-100 lbs. spring slaughter lambs 38.00-48.00, Good 55-85 lbs. 32.00-38.00. Slaughter ewes 5.00-15.00.

Medium 45.00-48.00.

BUTCHER HOGS: None offered Sows- 300-675 lb. 37.00-39.75. Boars- 695 lb. 29.75-30.00. 380-435 lb. 26.50-27.00.

VEAL CALVES: 3.00 lower on Choice. Choice 59.00-69.00; Good 50.00-60.00. Stocky & Thun- 30.00-50.00. Killers- 95-110 lb. 45.00-54.00, 70-90 lb. 40.00-47.00.

CALVES RETURNED TO FARM: Holstein Bulls- 95-125 lb. 55.00-77.00, mainly 60.00-70.00.

LAMBS: Choice 100-110 lb. 47.00-50.50; Sheep 10.00-21.00; Yearlings to 29.00. Goats 20.00-48.00.

STOCK CATTLE: Steers- Scarce. 300-900 lb. 44.00-51.50. Heifers- Choice 300-500 lb. 44.00-46.50; 500-700 lb. to 54.00; Good 300-700 lbs. 40.00-44.00. Bulls- Bulk 300-500 lb. 45.00-51.00, one to 64.00.

PIGS AND SHOATS- 150 head. By the head- 15-30 lb. 7.00-13.00; 30-60 lb. 10.00-22.00, few over 60 lb. to 31.00.

Next Tuesday Oct. 4th - Second "Special Feeder Cattle Sale" 7:00 P.M.

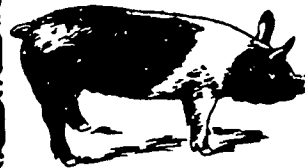
Westminster Livestock Auction

Westminster, Md.

Tuesday, September 27

Report supplied by auction

BUTCHER COWS: .50 to 1.00 lower. High Yield couple to 41.25; Standard & Utility 38.00-40.50; Canners 35.00-38.00; Shelly 35.00 down. Bulls- 1.00 lower. Good to 47.00; medium 43.00-46.00. Steers- Prime 1230-1455 lb. 61.25-62.50; Choice 56.00-59.00. Holsteins- Good 53.00-54.00; Standard 46.00-50.00. Heifers- Good few to 51.50;



EMERY'S BUYING STATION

OPEN TO RECEIVE YOUR MARKET HOGS

AT THE GREEN DRAGON MARKET RD 4, EPHRATA, PA 17522 1 MILE NORTH OF EPHRATA ON NORTH STATE STREET.

HOURS MONDAY, TUESDAY, and WEDNESDAY 6:00 A.M. to 11:30 A.M.

215-458-5677 Residence 717-733-9648 Office

YOU ARE PAID FOR YOUR HOGS IMMEDIATELY

Ken & Lois Emery, Proprietors



ATTENTION HOG PRODUCERS

Butler Foods, Inc.

has recently taken over the largest pork packing house on the East Coast and is putting a buying station in the Lancaster County.

SELL HOGS DIRECTLY TO PACKER AREA

Where - Vintage Sales Stables - Paradise, PA

When - Mondays, Wednesdays, Thursdays and Fridays 7 AM - 12 PM

Contact Edward Herrmann, Jr. 717-442-4742 for daily price quotes.



ATTENTION FARMERS

EVERY MONDAY HATFIELD PACKING CO. and BAUMS MEAT PACKING

Will Receive Your Hogs and Cattle at the

DANVILLE LIVESTOCK MARKET RD4, Danville, PA

• We will receive your hogs from 8 AM to 12 Noon every Monday. Your hogs will be weighed and paid for immediately.

• We will also accept your sows & boars.

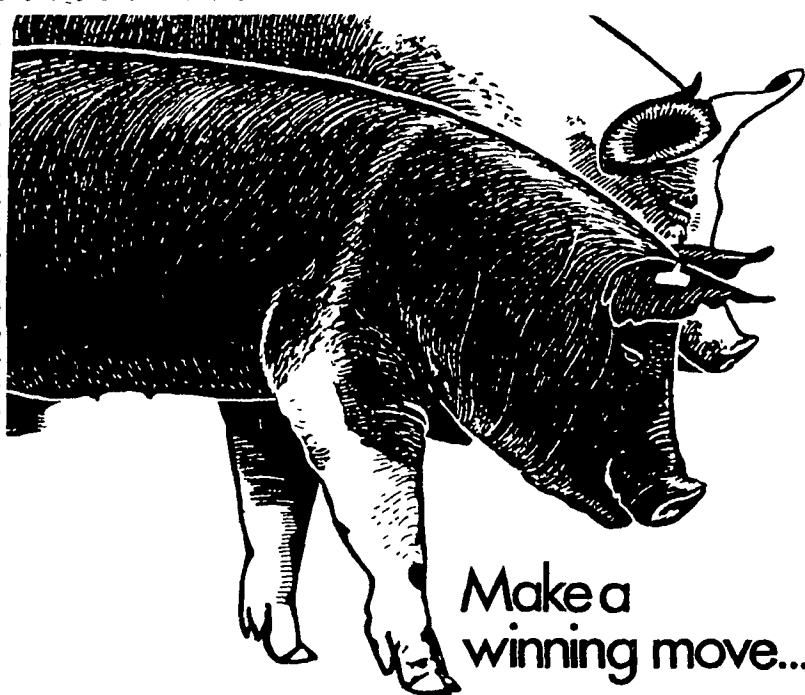
• Your cattle will be received from 12 Noon to 4 PM. We will either pay for your cattle immediately or you may sell them dressed weight.

• There will not be a commission or yardage fee deducted from your check.

• You may call our office Monday morning and we will be able to tell you the base price for hogs for the day.

• Please come and give us a chance to continue doing business with you through this method.

FOR INFORMATION CALL 717-275-2880



Make a winning move...

Kleen Leen

Play to win with our complete Checker Mates Hog Breeding Program. It's the result of many years of genetic research.

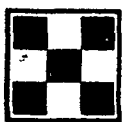
It can pay off in bigger, healthier litters in the farrowing house thanks to the maternal heterosis of Checker Gilts. Plus, the money saving performance punch contributed by Checker Boars when your pigs reach the finishing house.

But it's more than boars and gilts. It's a complete breeding program aimed at making you a winner.

Stop in and ask us about it today.

K & K FEED, INC.

PHONE: 717-866-2324
 23 N PARK ST. RICHLAND, PA. 17087



Purina Dealer

WEST WILLOW FARMERS ASSN., INC.
 PHONE: 717-464-3386
 WEST WILLOW, PA 17583

WOODSTOWN ICE & COAL CO.
 PHONE: 609-769-0069
 WOODSTOWN, N.J. 08098

HESS MILLS

PHONE: 717-442-4183
 717-768-3301
 PARADISE, PA 17562

LEHMANS FEED STORE

PHONE: 717-528-4151
 YORK SPRINGS, PA 17372

KEYSTONE MILLS

John B. Kurtz
 PHONE: 717-354-4616 717-738-1088
 RD3, EPHRATA, PA 17522