

# Maple 'sugarers' hold tour in NW Pa.

**BY NANCY KUNICK**  
Staff Correspondent

CORRY — Northwestern Pa. Maple Producers' Association hosted a successful State Maple Tour Sept. 23 and 24. The two days were packed full of fun and informative places to visit.

Approximately 100 people toured and also attended the highlight of the weekend — the buffet followed by the coronation of the 1983-84 Pa. Maple Sugar Princess on Friday evening.

For the second consecutive year the new state princess is from Northwestern Pa. Deanne Stalman, of Reno, in Venango Co. succeeds an "exceptional princess" Kim Walberg, of Wattsburg, in Erie Co.

Deanne was selected NW Pa.

Princess on May 23 at the annual meeting of the NW Pa. Maple Producers' Assoc. As a representative of Northwestern Pa. she competed for the state title with Lois French, of Bradford Co. - Endless Mts., and Christine Hyde, of Potter-Tioga counties - Shinglehouse.

Each contestant had to win one of the five district contests and be knowledgeable of the maple industry and also meet age requirements. The three charming girls were judged on Friday's tour and at dinner by Mr. and Mrs. Charles Bacon and Mr. and Mrs. Richard Shamback. They were judged on industry knowledge, poise, personality, and appearance. Shamback announced the winners as 2nd runner-up Lois



Maple Sugar Royalty include, from the left, Kim Walberg, last year's state princess; Deanne Stalman, newly-crowned Maple Sugar Princess; Christine Hyde, first runner-up; and Lois French, second runner-up.



Troy Firth's Central Evaporator is one of largest in state and utilizes equipment from former milk plants in maple syrup processing.

French, 1st runner-up Christine Hyde and the new princess Deanne Stalman.

The new princess thanked the Indians for discovering sap. She expanded on the processing of maple products, which she enjoys at her aunt and uncles' during tapping time. First runner-up Christine Hyde spoke on the nutritive benefits of maple products pointing out that three-fourths cup of maple sugar equals one cup of sugar and is equal in calories. Maple products are 100%

natural, too.

Prior to the coronation ceremonies, County Agent Joe Beard presented a slide show and spoke on the 1983 Dow Study Tour. Beard was chosen through the National Assoc. of County Agricultural Agents for his program accomplishments, extension program responsibilities, future plans and professional goals.

He was selected along with 29 other Co. agents to participate in the all-expense paid tour spon-

sored by Dow Chemicals Company.

The group travelled to New York and into six New England states stopping at Cornell University and viewing various types of agricultural production. Dairy, poultry and horse operations along with maple sugar and fruit businesses were visited from June 20 to June 30. Many of these were unique by being first in technological uses. Beard toured a dairy farm with 80 embryo trans-

(Turn to Page A21)

(Continued from Page A2)

splants, a barn trimmed in solar operation and a far Washington Co., Maine that 1000 lbs. of blueberries harvested per acre.

The two-day Pa. Maple began Friday morning from Corrian Hotel in Corry where of the members stayed. busloads first toured the Nor Egg Farm, near Corry; relatively large poultry operation in this area, Gaylord North through their 25,000 hens lay 2000 eggs per day, averaging less per hen.

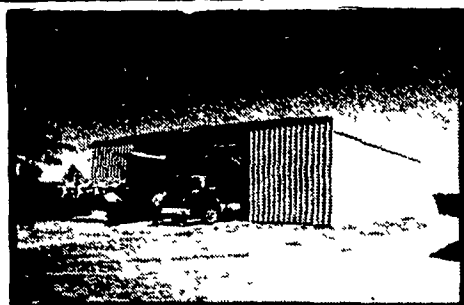
Gaylord and Dennis Nor operate the egg farm with the of their parents and families purchase day-old chicks and them, debeaking at one week prevent harmful pecking and spillage. Every 20 weeks



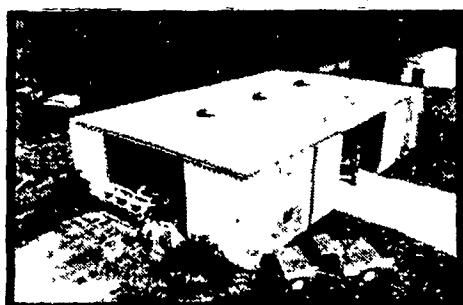
Total of 25,000 laying Farm, one of the stops o

## Formatted Buildings by Butler

## FREE COLOR PROGRAM



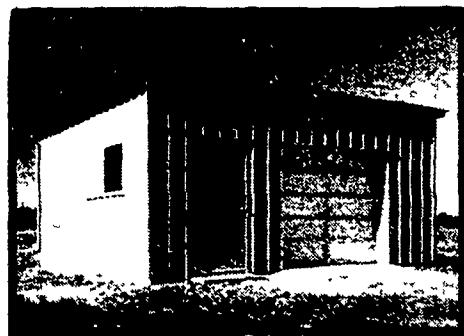
FARMSTEAD® I



FARMSTEAD® II



AG MASTER® 2:12



FARMSTEAD® II GARAGE

Buy It Right  
Color It  
**FREE!**\*

- **BUY IT RIGHT -**  
You get color FREE.
- **CHOOSE FROM ANY OF 8 BEAUTIFUL COLORS**

Bronze	White Sand	Barn Red	Pla
Desert Gold	Rustic Brown	Gulf Blue	Sto

ALSO... Order by October 20, 1983. Get a cordless telephone FREE.

ALSO... Order by October 20, 1983. Get a cordless telephone FREE.

- **SHELTER YOUR INCOME & EQUIPMENT WITH A BUTLER BUILDING**  
Take advantage of all your tax advantage credits.

### LIMITED TIME ONLY

\* Offer limited to side walls and trim and does not include the roof

### BUTLER MFG. CO.

Attn. P.E. Hess  
Box 337, Oxford, PA 19363



Dealer Inquiries Available In: Pennsylvania Counties - Berks, Schuylkill, Armstrong, Indiana, Erie, Crawford, Warren, Elk, Cameron, McKean, Clinton, Lycoming, Sullivan, Wyoming, Luzerne, Columbia, Butler, Bradford, Susquehanna, Adams, Cumberland, York, New Jersey Counties - Sussex, Morris, Passaic, Atlantic, Cape May, Monmouth, Middlesex, Somerset, Maryland Counties - Kent, Queen Annes, Talbot, Dorchester, New York Counties - Orleans, Genesee, Monroe, Livingston, Allegany, Steuben, Yates, Seneca, Cayuga, Tompkins, Schuyler, Tioga, Chemung, Broome, Chenango, Madison, Onondaga, Lewis, Oneida, Herkimer, Fulton, Montgomery, Otsego, Delaware, Schoharie, Sullivan, Orange, Ulster, Greene, Chautauque, Cattaraugus.

No Dealer Fees.

Name \_\_\_\_\_  
Address \_\_\_\_\_  
County \_\_\_\_\_ Zip \_\_\_\_\_  
City \_\_\_\_\_ State \_\_\_\_\_  
Phone \_\_\_\_\_  
(Include area code) LF

## BUY OR LEASE

Bethlehem 20 YEAR WARRANTY

More good news when specified as roofing or siding. Galvalume is warranted under exposure to normal atmospheric conditions, for a period of twenty years against rupture, perforation, or structural failure.

**KNOXVILLE CONSTRUCTION**  
Knoxville, Pa. 16928  
PH: 814-326-4188

**LEROY E. MYERS, INC.**  
Route #1, Box 163  
Clear Spring, Md. 21722  
PH: 301-582-1552

**D. E. SMITH, INC.**  
Mifflintown, Pa. 17059  
PH: 717-436-2151

**GOMPFF CONSTRUCTION CO. INC.**  
1841 Jerry's Road  
Street, Md. 21154  
PH: 301-692-5350

**FOUR COUNTIES CONTRACTOR**  
R.D., Box 249  
Coalport, Pa. 16627  
PH: 814-672-5751

**M.W. HOOK CONSTRUCTION**  
R.D. #2, Box 163  
Peach Bottom, PA 17554  
PH: 717-548-2615

**C & M SALES INC.**  
R.D.#1  
Honesdale, Pa. 18431  
PH: 717-253-1612

**NAZARETH BUILDING SYSTEMS, INC.**  
P.O. Box 47  
Nazareth, Pa. 18064  
PH: 215-759-1331

**W.R. MOODY, CONTRACTOR**  
113 Walnut Lane  
West Newton, PA 15089  
PH: 412-872-6804

**O. A. NEWTON & SON CO.**  
Bridgeville, Delaware 19933  
PH: 302-337-8211

**TRI-STATE MARINE DIST. INC.**  
Route #6  
Deale, Md. 20751  
PH: 301-867-1447

**KELLER BUILDING SYSTEMS INC.**  
R.D. #1 Box 203  
Lewinsburg, PA 17837  
PH: 717-524-0568