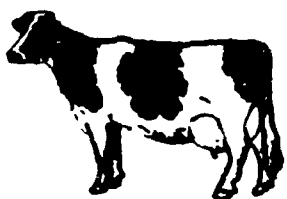


DAIRY HEIFER SALE
FRIDAY, OCT. 28, 1983
6 P.M.



Keister's Middleburg Auction Sales, Inc.
Rt. 522, 3 Miles East of Middleburg, 5 miles West of Selinsgrove.

For information call: 717-837-2222 or 717-524-5285 or 717-966-2856 or 717-922-1490

KEISTER'S MIDDLEBURG AUCTION SALES, INC.
Rt. 522 R.D. 3
Middleburg, PA
Owners,

DON & WALT KEISTER

Ray Long & Dave Imes, Auctioneers
Terms: Cash Restaurant Open

PUBLIC BANKRUPTCY AUCTION

VALUABLE REAL ESTATE PLUS PERSONAL PROPERTY
FRIDAY, OCTOBER 7, 1983
10:00 A.M.

Located on Fenstermacker Road (RT. 799) and Meadow Road in Greenwich Township Berks County, Pa. App. 3 miles So-west of New Smithville, Pa. From old RT. 22 take Gensinger Road to Fenstermacker Road.

NOTE — all of the following parcels will be offered from the aforementioned Berks County location.

Parcel #1 consists of a tract of land containing 22 acres M/L situated on Fenstermacker Road and Meadow Road Berks Co., Pa. with bank barn, also 6000 various evergreen trees, some ready to harvest this season.

Parcel #2 also an adjoining 7 acre tract of land.

Parcel #3 is a tract of land containing 9 acres M/L "note" some of this land is nice wooded area and has been subdivided. This is a very nice area of Berks Co. just 15 minutes from Kutztown.

PLEASE NOTE— Parcel #4 consists of a hunting lodge in Luzerne County on 3.25 acres M/L, 2 bedroom lodge, kitchen, livingroom with fireplace, baseboard elec. heat, location along public road leading from Booths Corner to Harvey's Lake, Lake Twp. Loyalsville, Luzerne County, 3 1/2 miles from the Lake.

Parcel #5 a parcel of land known as 939 High St. in Bethlehem Northampton County, Pa. at corner of High & Fairview in Bethlehem. Thereon erected a stone and brick building with slate roof. Residential area.

Personal Property to be sold at auction immediately after Real Estate consists of the following items 35'x8' office trailer, 42'x10' mobile home, 2 horse wagon with original paint on box, Frick oo saw mill, I beams, Case Hill side grader hitch, John Deere L. mdl tractor, Cockshutt tractor, Bolens cultivator, various small engines and engines for parts, potato cutter and graders, Wisconsin engines, N.H. Baler with Wisc. engine, ladders, threshing machine, 2 R2 Caterpillars, 5 D.K.W. automobiles, John Deere B, Champion 2 row potato digger, lots of used lumber, shutters, parts to Farmall A, cases of paper machet vases, 36 H.P. V.W. engine, John Deere 2 row corn planter, lime drill, Gravelly tractor accessories, copper tank, butcher bench, 55 Chrysler, iron wheel farm wagon also lots and lots of treasures "note" uncovered.

NOTE— most motorized equipment may need repair or will serve as parts. Come and take a look.

Auction By Order
OF FREDERICK L. REIGLE ESQ.
Trustee in Bankruptcy
RE: Fred P. Ayre Jr. and
Marie A. Ayre-H/W
Case #82-02886

E.M. Murry Associates

287 Lime Rock Road
Litz, PA 17543
Elmer Murry 626-5244 - 626-2636
Richard Murry 626-8175 - 949-2280
Ken Miller 665-2073
Professional Auctioneers
Appraisers and Advisors
Since 1953

Public Auction Register

Closing Date - Monday, 5:00 P.M.
of each week's publication

SAT OCT 22 9 AM Public Auction of Farm Real Estate, Tools, Equipment and Household Goods Located going 8 mi north of the city of Lebanon on Rt 72 to Lickdale go west on Rt 72 1 mi to village of Bordnersville at crossroad go south, 1st farm Harold C and Grace A Heisey Owners Nelson L Eber sole and Ira R Shoop Auctioneers

SAT OCT 22 10 AM Public Auction of Building Materials Located from Square in East Berlin get on W King St. W on Rt 34, approx 1 mi to Ger

many Rd turn right ap prox 1 mi to Story Point Rd turn left to sale Fred Smythe Owner Clair R Slaybaugh Auctioneer

SAT OCT 22 9 AM Public Auction of Real Estate Livestock and Farm Equipment Located along Rt 222 7 mi south of Lancaster 4 mi north of Quarryville 1st farm transportation center on Duerer St Rt 561 in Cologne NJ Vilsmeier Auction Co Inc

SAT OCT 22 12 Noon Public Club Call Auction Located at J C Enterprises Ringgold PA Les Haller J C Cattle Mgr

SAT OCT 22 9:30 AM Public Auction of Antiques Collectibles Furniture and Household Located in Shamokin RD 2 Overlook turn off Rt 61 at Weigh Scales or off Rt 54 at Bear Gap follow auction signs St Peters United Church of Christ Owner Hocks Auction Service

SAT OCT 22 11 AM Public Auction of Real Estate Located minutes from Phillipsburg NJ Max E Spann Inc Auctioneers

south of Hessdale Strasburg Twp Lanc Co PA David F and Mary K Fisher Owner Dittenbach's Auctioneers

PUBLIC AUCTION OF FINE INDIAN ARTIFACTS, PRIMITIVES & ANTIQUE GLASSWARE

from the Antique Shop of the late Ada Musselman and the Collections of the late David Musselman of Ephrata.
SAT. OCT. 8, 1983
9 A.M.

to be held at the Farmersville Fire Hall, E. Farmersville Road, Ephrata R.D. #4, Farmersville, Lanc. Co.

RARE PENNA.-GERMAN, LANC CO. DECORATED ARCHITECTURAL BLANKET CHEST, DATED 1768; 18th Cen. Ephrata Cloister Table; Over 1400 Indian Artifacts (mostly S.E. Penna.); Over 650 Pieces of Antique Glassware; Redware; Pewter; Lehn Cup & Saucer, Sugar Bucket, Egg Cup & Footed Cup; Textiles; etc.

Terms By:
SARA B. MUSSELMAN

Auctioneers:
T. Glenn Horst (859-1331)
Timothy G. Horst (738-1245)
Catalogue By:
Clarence E. Spohn (733-6276)

MON OCT 24 2 P.M. Public Auction of 95 Acre Hog and Steer Farm Location Take Route 322 to East End of Ephrata Turn left on Hahnstown Road first road left after overpass Continue on Hahnstown Road approximately 2 miles to farm on left Ephrata and East Cocalico Twps Lancaster County Pa Auction by Harvey Z. and Rebecca R. Fox, Auction conducted by John E. and Paul E. Martin Auctioneers

TUES OCT 25 7 PM Public Feeder Auction Located at Carlisle Livestock Market, just off 181 exit 12

PUBLIC AUCTION

95 ACRE HOG & STEER FARM
MONDAY, OCTOBER 24, 1983
Sale Time: 2:00 P.M.

LOCATION: Take Route 322 to East end of Ephrata. Turn left on Hahnstown Road, first road left after overpass. Continue on Hahnstown Road approximately 2 miles to farm on left. Ephrata and East Cocalico Townships, Lancaster County, Pa.



2 1/2 STORY SANDSTONE & FRAME DWELLING
BUILT IN 1862

containing on first floor: large eat-in kitchen with built-in cabinets; family room; living room; utility and laundry room; 1 bedroom; full bath; wood storage area.

Second Floor: 4 bedrooms; attic area above second floor; full basement, partially concreted; gas hot water heater.

3 CAR DETACHED CEMENT BLOCK GARAGE;

LARGE BANK BARN

with feed lot for approximately 125 steers

20 x 75 FOOT STAVE SILO

with Unloader and Bunk Feeder;

10 x 40 FOOT SILO

HOG OPERATION CONSISTS OF:

35 Crate Farrowing House; 70 Sow Gestation Building; 40 Sow Breeding Building; Nursery with 560 Head Capacity;

FACILITIES TO FATTEN A TOTAL OF 250 HOGS

Tobacco Shed converted to storage and shop area with lower level remodeled to fatten hogs.

7500 BUSHEL GRAIN BIN

- * Small Corn Barn
- * 200 Amp. Service
- * Mature Shade
- * 75 Acres Tillable
- * Sandstone Type Soil
- * Well With Pressure System
- * Double Throw Switch
- * Stream
- * 12 Acres Woodland
- * Small Pasture

INSPECTION: At Open House, Saturday, October 15th and October 22nd, 1983, from 12 noon to 3 p.m., or by appointment.

To avoid disease in hogs all persons going through hog houses must use precautionary measures provided by tenant. Hog houses will be open at OPEN HOUSE or can be seen by calling ISAAC RAY SENSENIG at 717-733-9379 for appointment. Balance of farm can be inspected anytime. All herein information is believed to be accurate, but is being used for advertising purposes only.

TERMS: 10% down day of Auction. Balance at settlement, April 1, 1984. Financing available by prior written approval. For transportation to inspect property, or to discuss financing, call PAUL E. MARTIN, Auctioneer, at 717-733-3305.

NOTE: This is a real homestead type farm with many possibilities. See it soon and prepare to buy.

Auction By:
HARVEY Z. & REBECCA R. FOX

Thomas H. Wentz, Attorney
Auction Conducted By:
John E. & Paul E. Martin, Auctioneers
Ephrata, PA 717-733-3305

SOUTH MT. ECHO FARM COMPLETE DISPERSAL
TUESDAY, OCTOBER 11, 1983
10:00 A.M.

Sale to be held at the farm at RD 4 Lebanon, Lebanon County, Pa. From rt. 322 take rt. 934 north to first road right and then left onto Oak St. to first farm on right. Farm approximately 10 miles east of Hershey and 3 miles SW of Lebanon.

220 REGISTERED AND GRADE HOLSTEINS 220

183 Registered, 37 Grades
110 Milking Age, 34 Bred Heifers (17 due Oct Nov All AI bred)
26 Yearlings, 40 Under 1 Yr. of age

RHA 16421 3.5 576

CLASSIFIED DHI RECORDS PREGNANCY EXAMINED HEALTH CHARTS
Sires include: Elevation, Jet Stream, Mars, Chairman, Milkmaster, Triple Threat, Gay Ideal, Marvex, Superior, Molly Chief, Coldsprings Ira, Gemini, Oak Green, Virginian, Md Sunset View Conductor Loco, Persuader, Trump
17 cows due Sept -Oct 12 cows due Nov -Dec 16 due Jan March

SOME OF THE FEATURES SELLING:

Full sisters from this high record Elevation
Sachse Vern Elevation 7-8 365d 30,943m 3.8% 1177f
Her daughters by Glen Valley Star
one with rec of 2-0 291d 15993m 454f due Nov to Dairyman also a bred heifer due January to Columbus

South Mt Echo Astrolite Star VG	South Mt Echo Chip Linda
2-3 365d 15619m 4.0% 630f	2-2 350d 20722m 3.3% 693f
3-4 365d 19261m 4.1% 786	3-3 256d 21540m 3.2% 693f inc
fresh in June — milking 90 lbs and bred to Sexation	due after sale to Very She has a Nov 82 Creek daughter selling
South Mt Echo Mars Flamer	South Mt Echo Gerben Gay VG
2-6 266d 15327m 3.6% 553f	2-0 305d 16618m 3.2% 526f
3-5 212d 18389m 574f inc est. 24235m 722f	3-5 365d 26304m 3.2% 833f by Gay Ideal and sells just fresh
bred to Columbus	
South Mt Echo Chrisy	South Mt Echo Keynoter Sue Twin VG
2-5 228d 16564m 516f inc est 20605 655f	3-3 342d 21784m 3.7% 808f
by Le-Dei Elevation Chris— due November to Milkmaster	4-6 365d 25100m 3.5% 874f
	5-9 est 21954m 756f bred to Columbus and a milking daughter sells

SPECIAL MENTION
11 daughters—5 milking of Md Sunset View Conductor Loco
USDA Summary V2 1983
PDM +1815 PD% -03PDF +61 38%R
PDT +1 21 45%R

SERVICE SIRE
Elmer, Fagin, Very, Bova, Spirit, Mil-Nor, Reckers Ace, Chairman, Milkmaster, Sky High, Columbus, Enchantment, Lone Ranger, Wiseman
SEMEN TANK and quantity of SEMEN to be sold following the cattle
NOTE: This is a herd of cattle that have not been pushed for top production and have been kept in a free stall operation. This is opportunity day with many top sires represented and cows ready to go to work for their new owners

Owners:
GLEN SIMON GINGRICH
717-867-4596

ELVIN J. GINGRICH
717-867-5280

Farm—717-867-5195

Doty Remsburg - Auctioneer
Jefferson, Maryland 21755
301-473-8214

Harry H. Bachman -
Auctioneer and Manager
138 College Ave., Annville, PA 17003
717-867-1809

For Catalogs contact:
Dale L. Hoover, Pedigrees
RD 4, Box 805, Lebanon, PA 17042
717-867-2489

Ringmen:
Mike Weimer 814-234-0364
814-237-1758
Robert Leitz 717-933-8211