



Chester County DHIA Monthly Report

August 1983

The cow with high fat was owned by Dunwood Farm
The cow with high milk was owned by David E. Weaver

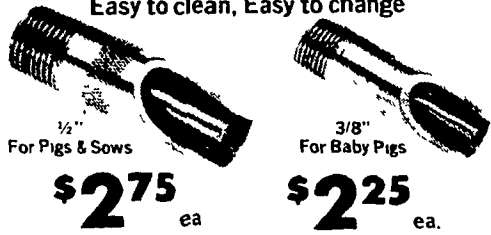
OWNER NAME OR NUMBER	BREED	% DAYS IN MILK	LBS. MILK	% FAT	LBS. FAT	
Dunwood Farm						
Jennife	3	4-10	305	25,666	4.2	1082
Bess	3	5-6	305	24,463	3.8	940
Betty	3	4-8	305	14,670	4.8	704
David E. Weaver						
Francis	3	5-3	305	27,478	3.9	1067
Mamie	3	3-2	305	19,359	4.1	790
Suds	3	3-2	292	19,192	4.0	777
Wendy	3	10-6	305	17,133	4.4	757
Krista	3	6-6	305	20,343	3.5	721
Buffy	3	4-9	305	16,621	4.2	700
J Harold Bare						
40	3	7-1	305	23,932	4.4	1059
51	3	5-3	305	22,083	3.9	864
46	3	6-7	295	19,878	3.9	768
41	3	3-1	305	20,576	3.5	714
Arrossan Farms						
Snothin	1	8-1	305	25,089	4.0	1001
Blorose	1	5-7	304	21,227	4.3	904
Hargret Dairy Inc						
Glenna 4	3	5-3	305	25,673	3.8	973
103	3	5-11	305	22,076	4.1	904

Molly 4	3	3-5	305	21,574	3.7	794
38	3	6-6	305	22,744	3.3	748
Vernon Guest & Son						
Jody	3	5-9	305	21,368	4.5	972
Cora	3	7-9	305	24,292	3.9	954
Joan	3	7-11	305	18,727	4.5	834
Gunaver	3	4-0	305	20,765	3.7	778
Bell	3	5-0	282	19,688	3.9	762
Dawn	3	3-2	293	20,086	3.7	751
Robert E. Pepple						
70	3	3-2	305	19,483	5.0	969
1	3	4-10	305	22,846	3.9	898
18	3	4-8	305	21,004	4.3	895
52	3	6-2	305	20,862	3.9	811
78	3	5-8	305	16,911	4.6	775
H & R Mason						
28G	3	4-3	305	21,954	4.4	957
25H	3	4-11	305	23,296	4.1	952
64F	3	3-9	305	22,526	4.1	917
113A	3	8-4	305	23,997	3.8	900
99B	3	6-5	305	19,600	4.4	853
127B	3	3-6	305	20,780	4.1	850
19B	3	9-2	305	22,443	3.7	837
74E	3	7-10	305	23,530	3.3	766
18H	3	2-6	305	17,791	4.3	760
89C	3	2-6	305	20,431	3.7	752
Kulp Bros						
153	3	6-10	305	22,342	4.3	956
Donald Hostetter Jr						
Morrine	3	3-9	305	23,352	4.1	955
Ann 6	3	7-11	305	20,710	4.1	844
Puff	3	7-2	305	23,222	3.5	812
Jefferson D Yoder						
30	3	6-3	305	24,859	3.8	940
35	3	6-2	263	19,227	4.6	889
44	3	3-4	305	18,376	3.9	718
John S Stoltzfus						
Clemmie	3	4-4	305	22,085	4.2	925
Good	3	6-4	305	24,617	3.7	917
Topsy	3	7-9	305	25,145	3.3	832
Phoebe	3	4-10	305	19,522	4.2	826
Lois	3	8-11	305	22,379	3.7	825
Gwen	3	2-2	292	17,218	4.4	753
Lester Eby						
Velma	3	8-6	305	24,571	3.6	893
Twin 2	3	3-3	305	23,354	3.7	855
Bonita	3	5-11	305	24,616	3.4	847
Billie	3	3-4	305	19,339	3.9	762
Vickie	3	7-7	296	19,212	3.9	741
Merle J King						
Farah	3	3-5	305	21,965	4.1	891
Folly	3	6-6	305	24,065	3.2	780
Gottlieb Strohmaier						
Robin 13	3	9-1	305	25,280	3.5	886
Bea 3	3	7-4	305	21,320	4.1	872
Vivian 2	3	7-2	305	19,198	4.4	850
64	3	5-11	305	21,896	3.7	801
Marcy 40	3	8-6	286	16,227	4.7	765
Dotty 34	3	10-8	302	15,873	4.7	749
Lisa 72	3	6-11	305	19,324	3.7	719
119	3	3-7	305	16,496	4.3	717
Elsie 30	3	10-5	294	17,175	4.1	712
George P Lamborn						
Lenore	3	7-3	305	25,838	3.4	881
Adeline	3	3-4	305	28,071	3.1	869
Terique	3	5-5	305	19,697	4.1	813
Spring Aqua Farm						
142	3	5-5	305	27,226	3.2	879
146	3	5-1	305	21,607	3.4	744
46	3	7-0	305	18,872	3.9	730
Parry Bros						
94	3	7-2	305	23,023	3.8	877
Harold J Ranck						
Maid	3	5-9	305	24,103	3.6	866
Kenneth Weaver						
48	3	5-4	305	21,826	3.9	851
E Richard Hoopes						
125	3	5-0	305	17,635	4.8	848
127	3	5-2	305	19,008	3.9	736
Dale Hostetter						
Jemima	3	5-1	305	18,954	4.5	844
Charles J Moore						
Whitsox	3	3-9	305	23,791	3.5	842
Karen	3	4-1	305	23,225	3.1	724
Ben Beiler & T Barlow						
Melod 27	3	3-2	305	18,570	4.5	841
Franc 56	3	4-4	305	17,610	4.6	804
Bessy 37	3	4-8	305	18,027	3.9	706
Elmer A Mast						
Jenny	3	5-10	305	22,634	3.7	838
Connie	3	7-1	305	18,874	4.1	776
Lena	3	4-2	305	22,417	3.1	705
Ridgela Farm						
74	3	4-4	305	18,837	4.4	834

(Turn to Page D15)

SPECIAL SALE

LOW-COST, Trouble free Nipple Drinkers!
Easy to clean, Easy to change

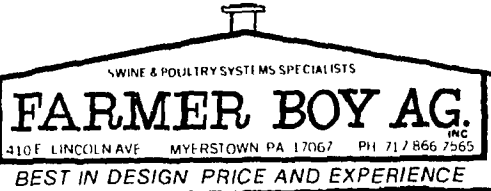


\$2.75 ea. **\$2.25 ea.**

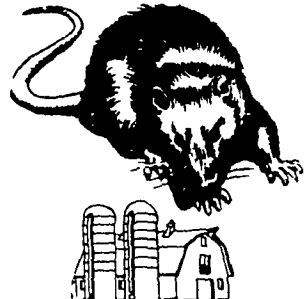
ONE-PIECE BODY
Solid Stainless Steel construction, no tubes, sleeves or inserts. Smooth Finish.

- Easily Removable Screen Holder
- Brass Orifice
- Heavier Springs - No More Breaking of Springs

WE WILL SHIP UPS ANYWHERE



ATTENTION FARMERS... FREE ESTIMATES ON RODENT CONTROL



RODENTS carry diseases which can endanger the health of your dairy herds. Your business is raising them. Ours is protecting them.

We Specialize In Sanitizing And Disinfecting Poultry Houses

Ehrlich

Since 1928
Pest control is too important to trust to anyone else

Lancaster, PA
397-3721

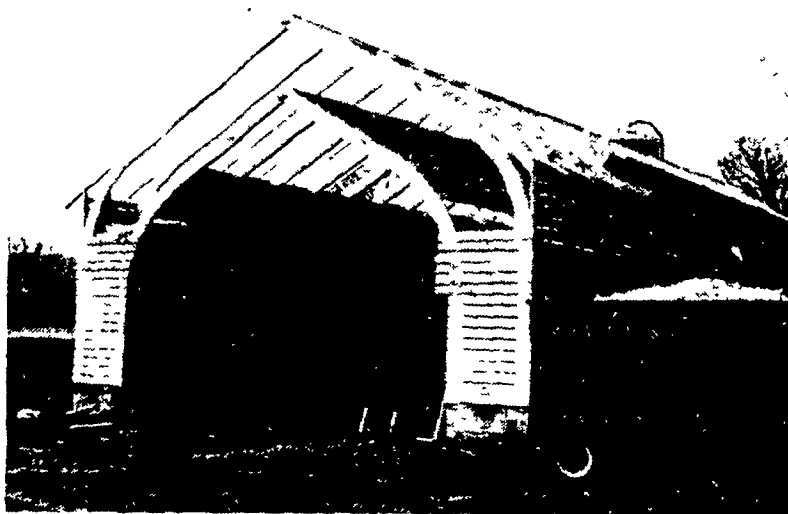
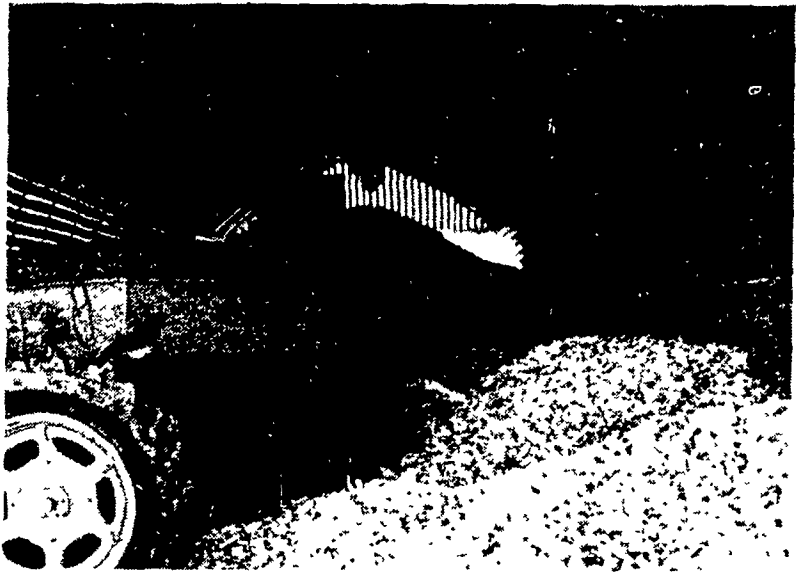
Lewistown, PA
248-0983

State College, PA
237-7607

CROP & EQUIPMENT PROTECTION

THIS CORN CRIB AND IMPLEMENT STORAGE BUILDING CAN HOLD 1000 TONS OF EAR CORN.

ADVANTAGES OF LAMINATE ARCHES:
VERSATILITY IN USE
EAR CORN STORAGE
IMPLEMENT STORAGE
CONVENIENT CENTER HEIGHT FOR UNLOADING & LOADING
SAVES ENERGY
NO POSTS TO ROT OFF
MORE SPACE ARCHES IN STOCK



Natural Crib Drying— Saves Feeding Value in Corn

Fill Crib in One Position With Elevator
Storage On Your Farm Gives You A Hedge Against Price Fluctuation



RIGIDPLY RAFTERS
RICHLAND RD 1, PENNSYLVANIA 17087
TELEPHONE: 866-6581

CALL US OR WRITE FOR MORE INFORMATION AND PRICES.