

# Livestock market and auction news

## Lebanon Valley Auction

Tuesday, September 20  
Report Supplied by PDA

**CATTLE 203.** Compared with last Tuesday's market, slaughter steers mostly steady, spots to \$1 lower. Slaughter cows mostly 50 cents to \$1 lower. Choice 2-4 1020-1460 lbs. slaughter steers 59.75-61.85, Good 58.10-60.10, few down to 55.00, Standard 46.25-50.50; Good & Choice holsteins 50.75-53.85, few 54.50. Individual Choice slaughter heifer at 56.50, few Good 49.25-51.50, few Standard 47.80-49.25, Utility 34.25-41, one 44.60. Utility & Commercial slaughter cows 39.50-42.60, few 44.85, Cutters 36.85-39.85, few 41.00, Canner & Low Cutters

32.25-37.00, Shells down to 22.25. Few Good slaughter bullocks 52.00-53.35, Standard 49.00-51.50, few Utility 46.75-47. Two Yield Grade #1 1610 & 2060 lbs. slaughter bulls 54.00 & 55.25, two #2 1450 lbs. at 48.00 & 50.00.

**CALVES 300.** Vealers grading Standard & Good steady to \$3 lower. Few Prime vealers 85.00-94, few Choice 71.00-90, few Good 51.00-72, Standard & Good 90-120 lbs. 49.00-53, 65-90 lbs. 42.00-49, Utility 50-100 lbs. 23.00-39. Farm Calves: Holstein Bulls 85-125 lbs. 50.00-89, mostly 62.00-81; few Holstein Heifers 80-110 lbs. 50.00-81.00. Few Beef Cross Bulls & heifers 80-100 lbs. 55.00-66.00.

**HOGS 95.** Barrows and gilts \$1

higher on small supply. US No. 1-2 220-255 lbs. barrows and gilts 47.00-47.60, few No. 1-3 205-210 lbs. at 47.00, lot No. 1-3 167 lbs. at 34.50. US No. 1-3 305-270 lbs. sows 35.00-39.75, few No. 2-3 300-430 lbs. 28.75-30.75. Boars 28.50-31.00.

**FEEDER PIGS 48.** Lot US No. 1-3 15 lbs. feeder pigs at 8.00 per head, No. 1-3 38-62 lbs. 29.00-39 per hundredweight.

**SHEEP 10.** Couple Choice 80-105 lbs. spring slaughter lambs 44.00, couple Good 35 & 60 lbs. 28.00 & 38.00. Few Slaughter sheep 8.00-20.00.

## Keister's Auction

Tuesday, September 20  
Report Supplied By PDA

**CATTLE 441.** Compared with

last Tuesday's market, slaughter steers Good & Choice \$1.25-\$1.75 lower. Slaughter cows 25 cents - 75 cents lower. Choice 2-4 slaughter steers 1000-1390 lbs. 58.60-61.25, couple 62.60, Good 55.00-58.75, couple 60.75, Standard & Low Good 52.50-54.50, Standard 48.00-51.25, few Utility 41.25-45. Couple Choice slaughter heifers 58.10 & 59.75, few Good 51.50-54.50, few Standard 45.00-50.25. Utility & Commercial slaughter cows 37.75-42.00, couple 43.50, Cutters 36.25-38.50, Canner & Low Cutter 33.00-36.25, Shells down to 29. One Choice slaughter bullock 56.00. Yield Grade #1 1000-1575 lbs. slaughter bullocks 44.10-50.10, one 1850 lbs. 53.50.

**FEEDER CATTLE:** Few Large Frame #2 400-700 lbs. feeder steers 41.00-52.00.

**CALVES 188.** Few Choice vealers 71.00-81.00, Good 61.00-75.00, few Standard & Good 110-130 lbs. 53.00-59.00, 70-110 lbs. 40.00-49.00, 60-85 lbs. 30.00-40.00.

**FARM CALVES:** Holstein Bulls 90-130 lbs. 50.00-65.00, few 70.00.

**HOGS 580.** Barrows and gilts \$1-\$1.50 lower. US No. 1-2 210-235 lbs. barrows & gilts 47.00-48.50, few 49.00, No. 1-3 200-250 lbs. 46.25-47.00, No. 2-3 190-270 lbs. 43.00-46.25. **SOWS:** US No. 1-3 275-575 lbs. sows 37.00-40.00, few 42.25, No. 2-3 300-550 lbs. 35.75-37.00. **BOARS** 30.00-31.50.

**FEEDER PIGS 265.** US No. 1-3 5-15 lbs. feeder pigs 6.00-10.00 per head, No. 1-3 20-35 lbs. 12.00-18.00,

No 1-3 35-50 lbs. 17.00-22.50, Lot No. 1-3 80 lbs. 26.00 per head.

**SHEEP 6.** Few Choice 85-95 lbs spring slaughter lambs 48.00-49.00

**GOATS 11:** Few Large 23.00-57.00 per head, few Medium 10.00-19.00 per head

## Lancaster Feeder Cattle

Friday, September 16  
Report supplied by USDA

Today	744
Last Friday	334
Last Year	708

**TREND** Compared to last Friday feeder steers steady to firm; feeder heifers not fully tested. Supply included about 500 head offered in lots of five to 20 with balance in one to three head lots in clean up type trade

### FEEDER STEERS

**MEDIUM FRAME 1:** Several lots 600-865 lb. 52.00-53.75

**MEDIUM AND LARGE FRAME 1:** Couple lots 670-930 lb 52.75-55.00.

**SMALL FRAME 1.** Couple lots 500-530 lb. 54.25-55.75, one lot 500 lb 50.25.

**MEDIUM FRAME 1-2** Several lots 585-875 lb. 50.00-52.00.

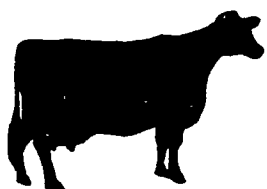
**LARGE FRAME 1-2.** Couple lots 840-915 lb. 50.25-52.00

**LARGE FRAME 2** Around 30 head 900-1130 lb. 45.75-48.50

### FEEDER HEIFERS

**SMALL AND MEDIUM FRAME** 1 One lot 505 lb 40.75

# Pennfield #513



## 16% DAIRY PELLETS

**\$179<sup>87</sup> NET/TON**

(Includes Cash & Volume Discount)

### Pennfield Pluses:

- + "No Charge" for roughage testing.
- + Computer Calculated "Least Cost" Feeding Program.
- + Bulk Feed Delivered Within 24 Hours From Receipt Of Order.
- + Dairy Terms: 2 1/2% Cash Discount - Due 15th of Following Month.
- + Well Trained "Dairy Specialists" Who Can Help Solve Problems When They Occur.



CALL TOLL FREE

PA: 1-800-732-0467  
MD: 1-800-233-0202



## HORSE MARKETS

### New Holland Horse

New Holland Sales Stables  
Monday, September 19

Report supplied by auction

Reported receipts of 291 head of horses, mules, and ponies. Market: lower.

### LOCAL

Better Horses 425.00-750.00.  
Driving Horses 375.00-950.00.  
Riding Horses 300.00-375.00.  
Lightweight killers 225.00-375.00;  
Heavyweight killers 400.00-540.00.  
Mares 25.00-75.00; Colts 15.00-25.00; Geldings 25.00-75.00; Larger ponies 125.00-305.00.

For quotations of next week's prices  
call collect 215-488-7617

**PA WATTS NUMBER  
800-342-2249**

LESS LABOR

VERY  
SANITARY



LESS DOA'S

LESS COND.

Buyers of Leghorn Fowl

## SECHLER'S POULTRY, INC.

Box G, Strausstown, PA 19559

SCOTT SECHLER

RICHARD SECHLER

NELSON LEGG



### FEEDER PIGS

Best of quality All orders large or small Selected with care Also we specialize in Holstein sires

Call Collect

**BOB TINDALL**  
South Charleston, Ohio  
513-462-8797

or

**BOYCE LIVESTOCK CO.**  
Unionville, Tennessee

### BEEFALO FOR SALE

-Semen in stock  
-2, 3, 7/8 animals

## BEEFALO N & J

4270  
Quakerbridge Rd  
Princeton, NJ 08540  
609-896-0336