



HAY MARKETS

Regional Hay

Friday, September 16
Report supplied by PDA

Hay and Straw steady to strong. Alfalfa 100.00-130.00; Mixed hay 75.00-95.00; Timothy hay 70.00-90.00; Straw 50.00-60.00; Mulch 25.00-40.00.

Green Dragon Hay

Ephrata, Pa.

Friday, September 16
Report supplied by PDA

35 loads hay and 17 loads straw. Alfalfa 80.00-130.00, mostly 105.00-121.00; Mixed hay 76.00-89.00; Timothy, few 75.00-96.00; clover, one load 77.00; Orchard Grass, few 54.00-94.00; Straw 57.00-80.00, one load 87.00; Ear Corn, 22 loads 124.00-145.00; Rye, 5 loads 3.60-4.20 per bu.

New Wilmington Hay

New Wilmington, Pa.

Friday, September 16
Report supplied by PDA

9 loads Hay and 1 loads Straw. Alfalfa, one load 135.00; Mixed hay 85.00-117.50; Reed Canary grass, one load 90.00; Clover, one load 112.50; Straw, one load 40.00; Ear Corn, 12 loads 102.00-109.00, few 119.00.

New Holland Hay

New Holland Sales Stables
Monday, September 19
Report supplied by auction

100 loads. Alfalfa, 81.00-136.00; Timothy, 75.00-121.00; Mixed Hay, 70.00-128.00; Straw, 57.00-102.00; Corn, 127.00-135.00; 1 load Clover, 92.00; Oats, 3.10 bu.; Rye Seed, 4.10, 4.25 bu.; Orchard Grass, 94.00; Corn Fodder, 60.00; Stubble Hay, 75.00.

Leinbach's Hay

Shippensburg, Pa.

Tuesday, September 20
Report supplied by auction

17 loads. Alfalfa 90.00-124.00; Mixed hay 60.00-105.00; Clover 83.00; Timothy 49.00-95.00; Straw 43.00; Ear Corn 151.00-156.00; Oats 2.30 bu.; Rye 5.25 bu.

Good's Hay

Leola, Pa.

Wednesday, September 21
Report supplied by auction

58 loads. Mixed hay 80.00-109.00; Timothy 92.00-100.00; Corn 128.00-144.00; Alfalfa 108.00-136.00; Straw 85.00-101.00; Corn fodder 66.00.

Pa. Grain

Monday, September 19
Report supplied by PDA

Compared with last Monday's market for Southeastern, Central and South Central Pa. Corn steady to 25 cents lower; new crop on the market in Southeastern counties; Wheat steady to 20 cents lower; Barley steady to 15 cents higher; Oats steady to strong; Ear Corn mostly steady to \$5 lower.

Prices paid delivered to dealers dock - (All prices per bushel, except Ear Corn per ton.)

Southeastern Pa.

Corn No. 2-y range 3.85-4.20, average 4.02, New Crop 3.47-3.70; Wheat No. 2 range 3.40-3.85, average 3.65, New Crop 3.75-3.87; Barley No. 3 range 2.30-2.85, few reported 2.15, average 2.15, New Crop 2.20; Oats No. 2 range 1.70-2.00, few reported 2.15, average 1.89; Soybeans No. 1 range 8.32-8.40, average 8.36, New Crop 8.23-8.50; Grain Sorghum #2 New Crop 2.80; Ear Corn range 108.00-128.00, average 116.80.

Central Pa.

Corn No. 2-y range 3.85-4.30, average 4.04; Wheat No. 2 range 3.25-3.80, average 3.53; Barley No. 3 range 2.00-2.30, few reported 2.45, average 2.21; Oats No. 2 range 1.60-1.85, average 1.72; Ear Corn range 107.00-120.00, average 113.00.

South Central Pa.

Corn No. 2-y range 3.90-4.20, average 4.02; Wheat No. 2 range 3.25-3.60, average 3.42; Barley No. 3 range 2.00-2.40, average 2.18; Oats No. 2 range 1.70-1.90, average 1.78; Ear Corn range 111.00-130.00, average 122.35

Southeastern, Central & South Central Summary

Corn No. 2-y range 3.85-4.20, average 4.03; Wheat No. 2 range 3.25-3.80, average 3.56; Barley No. 3 range 2.00-2.75, average 2.35; Oats No. 2 range 1.60-2.00, average 1.79; Ear Corn range 108.00-130.00, average 116.70.

Western Pa.

Corn No. 2-y range 3.90-4.10, few reported 3.60, average 3.94; Wheat No. 2 range 3.10-3.50, average 3.33; Barley No. 3 range 2.15, average 2.15; Oats No. 2 range 1.50-2.00, average 1.73; Buckwheat range 8.00, average 8.00; Ear Corn range 90.00-97.00, average 93.50.

Four States Livestock

Hagerstown, Md.

Wednesday, September 14

Report supplied by auction
SLAUGHTER: Fed Steers- Mostly steady. Choice none of-

ferred; Good 48.00-53.00; Medium 47.00 down. Heifers- Good 43.00-46.00; Medium 42.00 down. Cows- Steady with last week. High Yield 41.00-42.50; Average 37.00-40.00; Big Middle 33.00-36.00; Fatty Herf. 32.00-35.00; Shelly 34.00 down. Fat Bulls- Steady to \$1.00 higher. Good 48.00-51.25; Medium 44.00-47.00. Veal Calves- \$3.00 to \$5.00 higher. Choice 70.00-80.00; Good 60.00-69.00; Medium 50.00-59.00; Stocky Farm Hfrs. 40.00-49.00; Farm Bulls to 84.00; Light & Weak to 57.50. Lambs- \$2.00 lower. Good 41.00-44.00; Medium 40.00 down.

STOCKER: Steers 300-550 lbs.-

\$1.00 lower. Choice 54.00-57.00; Good 50.00-53.00; Medium 43.00-49.00; Culls 42.00 down. Steers 600-850 lbs.- Choice 53.00-56.00; Good 47.00-52.00; Medium 46.00 down. Heifers (All Weights) Choice 48.00-53.50; Good 41.00-47.00; Medium 40.00 down. Bulls- Individual at 60.00. Choice 50.00-55.00; Good 42.00-49.00; Medium 41.00 down. Springing Heifers - to 660.00. Pigs Hd.- 2.00 lower. 20-30 lbs. 5.00-13.00; 40-60 lbs. 14.00-17.00. Shoats by 15.- to 37.00. Slaughter Hogs- Steady prices. 210-230 lbs. 45.75-46.75; 240-260 lbs. 45.50-46.00; 190-205 lbs. 44.00-45.00. Sows- 300-700 lbs. 36.00-40.75.

Hay, Straw, Corn & Misc. SALE EVERY MONDAY

12 NOON
Dewart Livestock Auction
Dewart, PA

For information call
George Deitrick 717-568-5454
or H.H. Mylin 717-568-7271

KING'S AUCTION, KIRKWOOD

Hay, Straw and Grain Auction Every

1ST AND 3RD TUESDAY OF THE MONTH

12:00

Located Rt. 472 5 miles south of Quarryville or 6 miles north of Oxford at Shaub's Auction House.

No out of state checks accepted without bank approval
ALL TRUCKERS AND FARMERS WELCOME

NEW HOLLAND SALES STABLES, INC. - THE ACTION AUCTION

MONDAY



FAT HOGS
FARLY BIRD HOG SALE
For Your Protection Your Hogs Must Be Identified

10:00 AM



HORSES MULES

11:00 AM



HAY STRAW GRAIN



1:30 PM
BEEF SALE
CALF, SHEEP, GOATS

WEDNESDAY

12:00 NOON



HEIFERS, BULLS

NEW HOLLAND SALES STABLES, Inc.

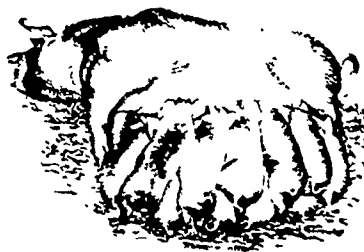
12 Miles East of Lancaster on Route 23, New Holland, Penna

The Action Auction
717-354-4341

Mgr. - Abe Diffenbach - 717-393-4464
Norman Kolb - 717-397-5538

Field Representatives
Alan Diffenbach 717-656-9806
Luke Eberly 215-267-6608 - 738-1865

WEDNESDAY FEEDER PIG SALE
1:30 P.M.



We endeavor to keep our barns cleaner than yours.
State graded until 12 Noon

THURSDAY

11:00 AM



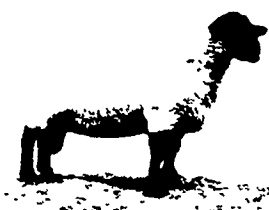
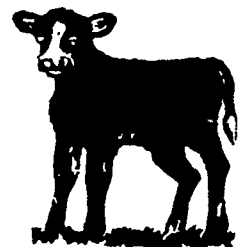
BULLS -



STEERS - BEEF COWS

3:30 P.M.

CALVES



SHEEP GOATS

Market your livestock thru New Holland Sales, your neighbor does
Pick-up your check before you leave