



HAY MARKETS

New Holland Hay

New Holland Sales Stables
Monday, September 12
Report supplied by auction

111 loads. Compared to last week all prices steady.

Alfalfa, 2nd and 3rd cutting, 111.00-139.00, few loads 1st cutting 90.00-110.00; mixed hay, few Choice 118.00-126.00, mostly 95.00-115.00; Meadow hay and grass mixed 70.00-85.00; Timothy, Choice 100.00-119.00, few down to 81.00; Straw, mostly 70.00-85.00, 1 load 111.00 and 1 load dark colored 49.00; Ear corn 130.00-140.00, 1 load with some mold 120.00; Stubble hay 45.00-95.00; Clover 103.00 and 105.00; Rye 3.90-4.50 per bu.; Timothy seed 23.00 bu.

New Wilmington Hay

New Wilmington, Pa.
Friday, September 2
Report supplied by PDA

18 loads Hay and 2 loads Straw. Alfalfa, few 75.00-105.00; Mixed hay 69.00-91.00; Timothy hay, one load 81.00; Clover, 2 loads 79.00 & 96.00; Straw 49.00 & 56.00; Ear Corn, 12 loads 100.00-121.00; Reeds Canary Grass, one load 90.00; Oats, one load 2.12 per bu.

Green Dragon Hay

Ephrata, Pa.
Friday, September 9
Report supplied by PDA

43 loads hay and 16 loads straw. Alfalfa 90.00-123.00; Mixed hay 70.00-100.00; Timothy hay, few 85.00-110.00; Clover, one load 76.00; Brome Grass, one load 67.00; Straw 59.00-81.00; Ear Corn, 15 loads 135.00-146.00; Rye, 6 loads 3.60-4.00.

Regional Hay

Friday, September 9
Report supplied by PDA

Hay and Straw steady to \$5 higher. Alfalfa 100.00-125.00; Mixed hay 75.00-95.00; Timothy hay 70.00-90.00; Straw 45.00-60.00; Mulch 25.00-40.00.

Good's Hay

Leola, Pa.
Wednesday, September 14
Report supplied by auction

77 loads. Mixed hay 60.00-99.00; Alfalfa 60.00-131.00; Ear corn 121.00-132.00; Straw 75.00-89.00; Timothy 72.00-99.00; Timothy seed 18.00 and 17.00 per bu.

Hagerstown Hay

Wednesday, September 7
Report supplied by auction

9 loads. Alfalfa 124.00-125.00; Alfalfa and Grass 124.00; Timothy 90.00-103.00; Ear Corn 117.00; Alfalfa poor 55.00.

Pa. Grain

Monday, September 12
Report supplied by PDA

Compared with last Tuesday's market for Southeastern, Central and South Central Pa. Corn uneven, mostly steady to strong; some new crop on the market in southern counties. Wheat unevenly steady. Barley and Oats steady to 20 cents higher. Ear Corn steady to \$10 higher.

Prices paid delivered to dealers dock - (All prices per bushel, except Ear Corn per ton.)

Southeastern Pa.

Corn No. 2-y range 4.00-4.30, average 4.16, New Crop 3.67-3.82; Wheat No. 2 range 3.40-3.95, average 3.72, New Crop 4.09; Barley No. 3 range 2.20-2.70, few reported 2.85, average 2.44; Oats No. 2 range 1.70-2.00, few reported 2.15, average 1.92; Soybeans No. 1 range 8.55-8.80, average 8.68, New Crop 8.85-9.10; Grain Sorghum #2 New Crop 3.00; Ear Corn range 112.00-130.00, average 117.67.

Central Pa.

Corn No. 2-y range 3.90-4.30, average 4.10; Wheat No. 2 range 3.25-3.80, average 3.57; Barley No. 3 range 2.00-2.45, average 2.25; Oats No. 2 range 1.55-1.95, average 1.72; Soybeans No. 1 range 8.85, average 8.55; Ear Corn range 107.00-120.00, average 113.06.

South Central Pa.

Corn No. 2-y range 3.80-4.25, average 4.02; Wheat No. 2 range 3.25-3.60, average 3.39; Barley No. 3 range 2.00-2.40, average 2.18; Oats No. 2 range 1.70-1.90, average 1.79; Ear Corn range 111.00-130.00, average 122.05.

Southeastern, Central & South Central Summary

Corn No. 2-y range 3.90-4.30, average 4.11; Wheat No. 2 range 3.25-3.95, average 3.61; Barley No. 3 range 2.00-2.60, average 2.32; Oats No. 2 range 1.60-2.00, average 1.79; Ear Corn range 110.00-130.00, average 117.05.

Western Pa.

Corn No. 2-y range 3.75-4.20, few reported 4.42, average 4.03; Wheat No. 2 range 3.10-3.35, average 3.23; Barley No. 3 range 2.15, average 2.15; Oats No. 2 range 1.50-1.90, average 1.67; Ear Corn range 89.00-100.00, average 94.50.

Keister's Auction

Tuesday, September 13
Report Supplied By PDA

CATTLE 352. Compared with last Tuesday market, slaughter steers grading Good & Choice \$2.25-\$3.25 higher. Slaughter cows \$1.75-\$3.75 higher. Few High Choice & Prime slaughter steers 63.50-64.10, Choice 2-4 950-1500 lbs. 60.25-63.00, Good 57.00-60.00, couple 61.50, few Standard 48.00-54.50, few Utility 40.85-44.50. Couple Choice slaughter heifers at 56.25, few Good 49.50-54.85. Utility & Commercial slaughter cows 38.50-42.85, couple 44.00, one 47.00, Cutters 36.75-39.00, Canner & Low Cutters 33.35-37.00, Shells down to 32. Few Good & Choice slaughter bullocks 54.50-57.75. Yield Grade #1 1050-2050 lbs. slaughter bullocks 45.50-53.00, couple down 44.25.

FEEDER CATTLE: Few Large Frame #2 460-1090 lbs. steers 42.00-48.00. Few Large Frame #1 500-700 lbs. heifers 50.00-51.50.

CALVES 213. Couple Prime vealers 89.00&100.00, Choice 71.00-89.00, Good 62.00-75.00, Standard & Good 70-100 lbs. 42.00-50.00, few 100-125 lbs. 50.00-55.00, Utility 60-85 lbs. 20.00-42.00.

FARM CALVES: Holstein bulls 90-135 lbs. 52.00-80.00, few Holstein

heifers 90-120 lbs. 48.00-54.00.

HOGS 609. Barrows & gilts mostly 25 cents higher. US No. 1-2 210-235 lbs. barrows & gilts 48.50-49.60, few Lots 51.25, No. 1-3 200-250 lbs. 47.35-48.50, No. 2-3 190-270 lbs. 44.00-47.00. SOWS: US No. 1-3 320-650 lbs. sows 36.00-39.00, couple 41.50. No. 2-3 300-500 lbs. 27.00-36.00. BOARS: Boars 28.00-30.25.

FEEDER PIGS 431. US No. 1-3 20-35 lbs. feeder pigs 11.00-18.50 per head, No. 1-3 35-50 lbs. 18.00-21.00, Lot No. 1-3 75 lbs. 24.50.

SHEEP: Choice 80-120 lbs. spring slaughter lambs 46.00-48.00. Few slaughter ewes 8.00-10.00.

GOATS: Few Large 19.00-41.00 per head, few Medium 5.00-18.00 per head.

Greencastle Livestock

Monday, September 12

CATTLE: Butcher Steers, Choice 58.00-62.00, Medium-Good 50.00-58.50; Butcher Heifers Choice 6.00-62.00, Medium-Good 44.00-56.50; Butcher Cows, Utility-Good 37.00-41.50, Canners and Cutters 34.00-40.50, Shells down to 32.00; Butcher Bulls, Medium-Good 46.75-56.10; Stock Steers, Medium-Good up to 57.00; Stock Heifers, Medium-Good up to 48.50.

CALVES: Choice Calves 160-220 lbs. 75.00-90.00; Medium-Good Calves 160-220 lbs. 60.00-80.00, 125-160 lbs. 50.00-70.00, 100-120 lbs. 45.00-60.00, 80-100 lbs. 40.00-55.00; Holstein Bull Calves up to 80.00; Holstein Heifer Calves up to 70.00; Light and Green Calves down to 25.00.

HOGS: Good-Choice Butcher Hogs 190-225 lbs. 43.50-46.75, 225-250 lbs. 46.00-46.75; Good-Choice Butcher Sows 400 lbs., down, up to 40.00, 400 lbs. up, up to 40.50; Heavy Boars up to 29.50; Pigs-Per Head 6.00-20.00.

Sale every Monday 6:30 P.M.

NEW HOLLAND SALES STABLES, INC. - THE ACTION AUCTION

MONDAY



FAT HOGS
EARLY BIRD HOG SALE
For Your Protection Your Hogs Must Be Identified

10:00 AM



HORSES MULES

11:00 AM



HAY STRAW GRAIN



1:30 PM BEEF SALE CALF, SHEEP, GOATS

WEDNESDAY

12:00 NOON



HEIFERS, BULLS
NEW HOLLAND SALES STABLES, Inc.
12 Miles East of Lancaster
on Route 23, New Holland, Penna

The Action Auction
717-354-4341

Mgr. - Abe Diffenbach - 717-393-4464
Norman Kolb - 717-397-5538

Field Representatives
Alan Diffenbach 717-656-9806
Luke Eberly 215-267-6608 - 738-1865

WEDNESDAY FEEDER PIG SALE
1:30 P.M.



We endeavor to keep our barns cleaner than yours.
State graded until 12 Noon

THURSDAY

11:00 AM



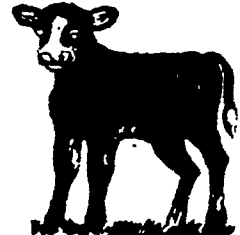
BULLS -



STEERS - BEEF COWS

3:30 P.M.

CALVES



SHEEP GOATS

Market your livestock thru New Holland Sales, your neighbor does
Pick-up your check before you leave