

York Fair

(Continued from Page A24)

Junior Champion Female
Rutter Bros
Reserve Jr. Champion Female
Rutter Bros
Jr. Get-of-Sire
1 Rutter Bros
Jr. 2-Year-Old
1 Rutter Bros, 2 Honeycrest Farm, 3 Wayne
Hobough
Sr 2-Year-Old
1 & 3 Rutter Bros, 2 Honeycrest Farm
3-Year-Old Cow
1 Chad Rutter, 2 Honeycrest Farm
4-Year-Old Cow
1 Rutter Bros, 2 Honeycrest Farm, 3 Rutter
Bros
Aged Cow
1 Rutter Bros, 2 Honeycrest Farm, 3 Todd
Rutter
Dry Cow
3 & 4-Year-Old
1 & 2 Honeycrest Farm, 3 Rutter Bros
Dry Aged Cow
1 Honeycrest Farm
Senior Champion Female
Rutter Bros (4-Year Old)
Reserve Sr. Champion Female
Rutter Bros (Aged Cow)

Grand Champion Female
Rutter Bros
Reserve Grand Champion Female
Rutter Bros
Udder Class
1 Rutter Bros, 2 & 3 Honeycrest Farm
Produce of Dam
1 & 3 Rutter Bros, 2 Honeycrest Farm
Dam and Daughter
1 Rutter Bros, 2 & 3 Honeycrest Farm
Best Three Females
1 Rutter Bros, 2 Honeycrest Farm
Dairy Herd
1 Rutter Bros, 2 Honeycrest Farm
Sr. Get-of-Sire
1 & 2 Rutter Bros, 2 Honeycrest Farm
JERSEY
Junior Heifer Calf
1 Mar De Farms, 2 Mildred Seeds, 3 Lilac Springs Farm
Intermediate Heifer Calf
1 Tim Fitzgerald, 2 Lilac Springs Farm, 3 Lilac
Springs Farm
Senior Heifer Calf
1 Mildred Seeds, 2 & 3 Mar De Farms
Junior Yearling Heifer
1 Mildred Seeds, 2 Lilac Springs Farms, 3 Mar
De Farms
Senior Yearling Heifer
1 Mildred Seeds, 2 Susan Eisenhart, 3 Lilac
Springs Farm
Junior Champion Female
Mildred Seeds (Sr Yearling)
Reserve Jr. Champion Female
Mar De Farms (Jr. Calf)

Jr. Get-of-Sire
1 Mar De Farms, 2 Mildred Seeds
Jr. 2-Year-Old
1 Mildred Seeds
Sr. 2-Year-Old
1 Susan Eisenhart, 2 Mildred Seeds, 3 Anna
Uhlman
3-Year-Old Cow
1 Mildred Seeds, 2 Mar De Farms, 3 Lilac Spr
ings Farm
4-Year-Old Cow
1 Mar De Farms
Aged Cow
1 Mar De Farms, 2 Mildred Seeds
Dry Cow
3 & 4-Year-Olds
1 Mildred Seeds, 2 Lilac Springs Farm
Senior Champion Female
Mar-De Farms (Aged Cow)
Reserve Sr. Champion Female
Mildred Seeds (3-Year Old)
Grand Champion Female
Mar-De Farms
Reserve Grand Champion Female
Mildred Seeds
Produce of Dam
1 Anna Uhlman, 2 Mildred Seeds, 3 Mar De
Farms
Dam and Daughter
1 Mar De Farms, 2 Mildred Seeds, 3 Lilac Spr
ings Farm

Best Three Females
1 Mildred Seeds, 2 Mar De Farms
Sr. Get-of-Sire
1 Mildred Seeds
AYRSHIRES
Junior Heifer Calf
1 & 2 Samuel Diehl, 3 Sycamore Meade Farm
Intermediate Heifer Calf
1 & 2 Samuel Diehl, 3 James Haller
Senior Heifer Calf
1 Samuel Diehl
Junior Yearling Heifer
1 & 2 Sycamore Meade Farm
Senior Yearling Heifer
1 Sycamore Meade Farm, 2 Mark Jenkins
Junior Champion Female
Samuel Diehl (Sr Heifer)
Reserve Jr. Champion Female
Sycamore-Meade Farm (Jr Yearling)
Jr. Get-of-Sire
1 Samuel Diehl, 2 Sycamore-Meade Farm
Jr. 2-Year-Old
1 Samuel Diehl
Sr. 2-Year-Old
1 Samuel Diehl, 2 Sycamore-Meade Farm, 3
Honeycrest Farm
3-Year-Old Cow
1 & 3 Samuel Diehl, 2 Sycamore-Meade Farm
4-Year-Old Cow
1 Samuel Diehl

Aged Cow
1 Samuel Diehl, 2 Thomas Parks
Dry Aged Cow
1 Samuel Diehl, 2 & 3 Sycamore-Meade Farm
Senior Champion Female
Samuel Diehl (Sr 2-Year Old)
Reserve Sr. Champion Female
Samuel Diehl (Jr 2 Year-Old)
Grand Champion Female
Samuel Diehl
Reserve Grand Champion Female
Samuel Diehl
Produce of Dam
1 & 3 Samuel Diehl, 2 Sycamore Meade Farm
Dam and Daughter
1 & 2 Samuel Diehl, 3 Sycamore Meade Farm
Best Three Females
1 Samuel Diehl, 2 Sycamore Meade
Dairy Herd
1 Samuel Diehl, 2 Sycamore Meade Farm
Sr. Get-of-Sire
1 Samuel Diehl, 2 Sycamore Meade Farm
MILKING SHORTHORN
All of the entries were shown by and awards
went James and Christine Young



BUCK TRACTOR PULLS
2 EVENTS

10th Anniversary Celebration

Today
Saturday, September 17, 1983

First Event

10 A.M. - 4 P.M.
Entries will be accepted
until 9:30 A.M.

Admission:
Adults - \$3.50
Children - \$1.00

Featuring anyone who has a vehicle capable of pulling the sled. Farm Tractors, Garden Tractors, Modified Tractors of past years, 4 Wheel Drive, Street Trucks, Truck Tractors.

Second Event

7 P.M.
State Tractors and Trucks

Admission:
Adults - \$5.50
Children - \$1.75

LOCATION: 10 Miles South of Lancaster On Rt. 272

SEE YOU AT THE BUCK!

Comfortable protection. Red Wings

ASK THE MAN WHO WEARS THEM

SUPER SOLE
SAFETY BOOTS



2219



2255



2220

Steel Toes?
You Guess!

What's your style. If your job calls
for safety steel toes, there's no need
to settle for what you can get.
With Red Wings, you get
what you want! Stop in.

SIZES
A-EEE / 5-15
Not all sizes in all widths.

Red Wings

WAYNE'S
DRY GOODS

HOURS: Daily 8:30 A.M. to 6:00 P.M. Friday 11:00 P.M.
271 W. MAIN STREET - KUTZTOWN, PA - PHONE 215-683-7686

• Safety Steel Toe
• Tough Long wearing
Urethane Sole
In Stock No Waiting

REAL EVERYDAY LOW PRICES AT EM HERR'S

HEAT BULBS & HEAT LAMP HOLDERS

- CASE LOTS -

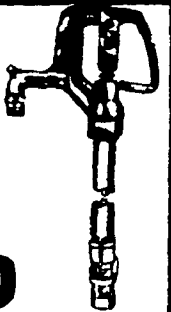
| | Reg. | SALE |
|----------------|--------|------|
| 250 Watt | 1.99 | 1.59 |
| 250 Watt (Red) | 3.99 | 3.59 |
| Lamp Holders | \$5.99 | 4.99 |



Frost Proof Hydrants

Reg. 3' - 37.95
4' - 38.95
5' - 39.95

YOUR CHOICE
\$30.00



WINTER WORK CLOTHES

Carhartt & Wrangler

- Come see our large selection, you'll love the price
- Overalls
- Lined Jackets
- Lined Coveralls
- Work Jeans
- Pile Lined Vests
- Shoes & Boots

Great Christmas Gifts

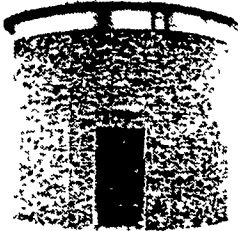
Silo Caps & Tarps • 4 mil • black

| Size | Reg. | Sale |
|-------|-------|-------|
| 14x14 | 6.39 | 4.99 |
| 16x16 | 7.99 | 5.99 |
| 18x18 | 9.69 | 6.99 |
| 20x20 | 12.29 | 8.99 |
| 24x24 | 15.99 | 10.99 |

SPEEDY CORNCRIBS

- Easy to erect
- Rods in lead of bolts on wire mesh

We Will
NOT BE UNDERSOLD!
IF you find a lower advertised price on any corn crib (same capacity) we will match the price!



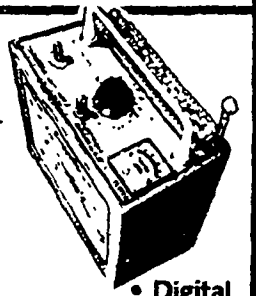
Electric, Portable

Skuttle

MOISTURE TESTER

Reg. 89.99

NOW **\$79.99**

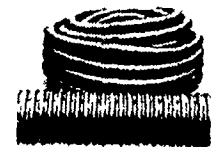


• Digital
Moisture
Tester Also
Available

Where in earth
could you
use



DRAINAGE PIPES



- Wet Spots
- Curing Erosion Problems
- Poor Yielding Crops
- Hillside Seeps
- Root Development
- Terrace Drainage
- Water Table Control

GRAIN BIN PAINT

BRAND
NEW
w/Bus

NOW!
CONTAINS
RUST
ARRESTER

- ACRYLIC MAINTENANCE PAINT -

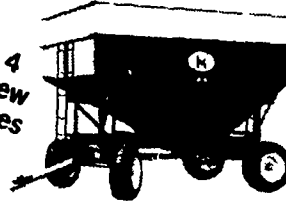
- ★ ★ 7 STAR VALUE ★ ★
- ★ Easy Cleanup
- ★ Rust Resistant
- ★ Premium Quality
- ★ Brush, Roll or Spray
- ★ Low Sheen Finish
- ★ Easy to Apply
- ★ High Hiding

GRAVITY BOXES

165 Bu. Reg. 539.95

4 New
Sizes

\$499.95



| Bu. | SALE | Reg. |
|---------|-----------------|----------|
| 185 Bu. | \$549.95 | \$599.95 |
| 215 Bu. | \$569.95 | \$629.95 |
| 260 Bu. | \$699.95 | \$769.95 |

Running Gears Also Available

CREOSOTE WHITE PAINT



- Oil base
- Free use of airless Paint

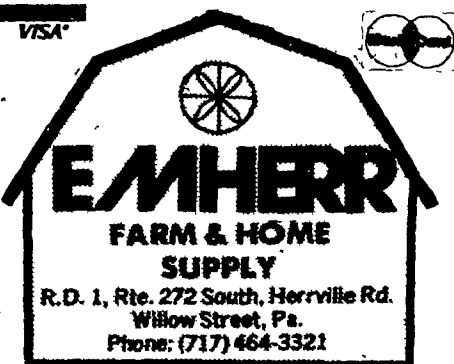
Sprayer with
Purchase of 10
pails or more.

Available: White Latex House and
Barn Paint

ONLY **\$7.99** per gal.
COMES IN 2 GAL. PACKS ONLY

SPECIALS EFFECTIVE THRU SEPT. 24

We UPS
Anywhere -
Just Call
717-
464-3321
Or
Toll Free
(Area Codes
717 & 215)



R.D. 1, Rte. 272 South, Herrville Rd.
Willow Street, Pa.
Phone: (717) 464-3321

Store Hours
Mon Thurs Sat
7:30 A.M. 6:00 P.M. 7:30 A.M. 5:00 P.M.
Fri 7:30 A.M. 9:00 P.M.