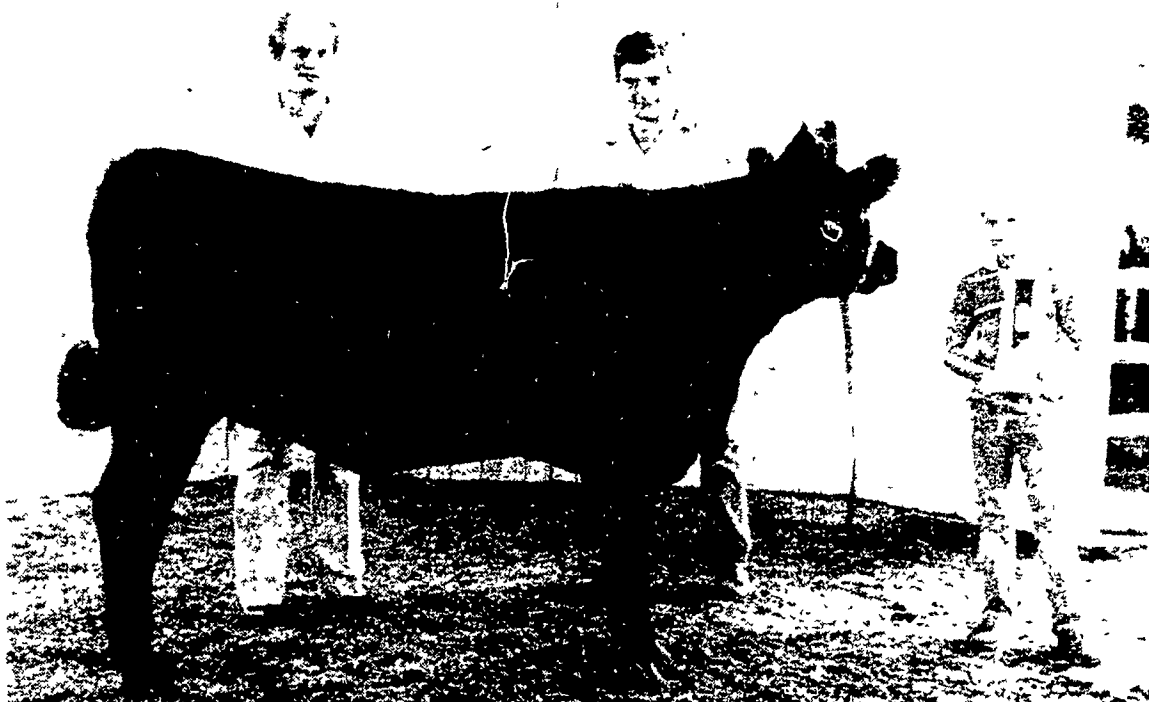


Frey, Shive headline Jr. Angus Show at York

BY LAURA ENGLAND
YORK — Fritz Frey and Chris Shive have been strong com-

petitors in the Angus show arena and this Sunday headlined the Pa. Jr. Angus Invitational Show at the

York Fair with their heifer champions. Frey, Quarryville, earned grand



Capturing grand champion honors in the Jr. Angus Show was Fritz Frey and his junior yearling heifer, Blackbird of Ettrick 3P. Presenting Frey his trophy are judge Gary Dean and Jason Bross of T and J Farms.



Following the Jr. Angus Show, a special fitting contest was held for all junior showmen. After close inspection by judge Gary Dean, the winners were, from left: Donald Godfrey, Felton, rookie fitter; Susan Eisenhour, Wellsville, ages 9-14; and Krista Rankin, Abbottstown, 15 and over. With the winners is Bill Dietz, sponsor of the revolving fitting trophies.

championship honors with his junior yearling heifer, Blackbird of Ettrick 3P. Shive, Seven Valleys,

took the reserve title with her summer heifer, BV Queen 582.

Winning junior calf honors was Deb Hoffman, grand champion, and Joann Rishel, reserve grand. The summer heifer title went to Chris Shive, while Ernie Frey II took the reserve ribbon.

Fritz Frey was named junior yearling winner and Cathy Shive, the reserve. Late junior yearling class winners were Diane Krause, champion, and Joann Rishel, reserve.

Following the judging by Gary Dean, Strasburg, an open showmanship contest for all junior beef showman at the York Fair was held. The senior winner was Krista Rankin, Abbottstown, and Susan Eisenhour, Wellsville, was the 9-14 age class winner. First year showman Donald Godfrey, Felton, was named the rookie showmanship winner.

In breed class competition, the following were named winners

(Turn to Page A26)

"We tried Hardy Brand corn..."



"As the name goes, it's Hardy!"

Dick and Gary Hahn
Easton, PA

"Considering this year's dry weather, the Hardy 701X, 703X, and 301X have done real good for us. They dry down real good, produce good, and the price is right. And the corn looks real nice. Hardy corn really is hardy! They live up to their name, and I intend to stick with them.

Another thing I like—I always plant medium flat kernels, and Hardy seems to run nice and uniform. I can go from one variety to another and I don't have to change plates."



"Hardy outyielded the competition."

Sam Piazza
Piazza Farms
Phillipsburg, NJ

"The first year I tried Hardy, I planted 701X and 301X right alongside the Pioneer. They outyielded both of the Pioneer varieties for their maturity dates.

Let's face it, anyone can put out a variety that will do good in an ideal season. You've got to be able to perform respectably in a poor season. You don't want to hear excuses—you want to go out there with a combine and have corn on those ears. In two years' experience with Beachley-Hardy, I haven't had a problem."



"We like corn that husks nice and clean."

Donald Mack
Mack Farms
Pen Argyl, PA

"We tried it, we liked it. It husked well . . . better than some others we tried. And it stood up well and yielded well, about 150 bushels or so. I've been buying Hardy Corn for around 10 years. We use 701X, 802X, and this year we tried some 301XS and 602XS.

Hardy has good standability, and it's reasonably priced. You probably get more kernels to their full bushel bag than a lot of other companies, and Hardy's price is often lower."

...and we like it!"

See your local Hardy Brand dealer, or contact:



Beachley-Hardy Seed Company

PO Box 336, Camp Hill, PA 17011, 717-737-4529

"For a Hardy Stand use Hardy Brand"

\$\$\$ PAYING CASH \$\$\$

Silver Dollars Paying \$13.50 EF,
Sell At \$14.50

Silver Coin Pay \$8.00-\$9.00,
Sell \$10.00


Paying cash for all guns, gold rings, old clocks, old furniture, picture frames, watches, cars, trucks, farm tractors and equipment. Call or bring into:

GOLD & SILVER EXCHANGE

Rt. 61 and Rt. 22
Hamburg, PA next door
to State Police Barricks
215-562-5557

Wheel Horse


Red Tag Value Deals



C-175 AUTOMATIC

\$3995.00 (1 ONLY)
INCLUDES 42 INCH MOWER DECK 17 H P KOHLER ENGINE (TWIN CYLINDER)

WORK HORSE by Wheel Horse
Economy Priced, Quality Built!



GT-1848-18 H P BRIGGS I C ENGINE AUTOMATIC 48 FULL FLOATING MOWER
Now Only **\$2999**
(In the States)

Wheel Horse...the best value for your money!

LAWN CARE OF PENNA.
1 MILE NORTH OF MARTINDALE ON CRIST MILL RD
A little out of the way but a lot less to pay
NEW HOURS: MON THURS 10:00-6:00 TUES WED 9:00-5:00 SAT 9:00-5:00

(215) 445-4541