

Public Auction Register

Closing Date - Monday, 5:00 P.M.
of each week's publication

THURS. OCT. 13 - 10 AM Public Auction of Farm Equipment, Tools and Lumber Located along Rt. 999 about 4 mi west of Millersville, R.D. 1, Washington Boro, Manor Twp., Lanc. Co., PA, across from Central Manor Church of God Daniel W. Mellinger.

Owner Howard Shaub and Roy C. Probst, Auctioneers

FRI OCT. 14 - 6:30 PM Public Auction of Feeder Cattle Located at Keisters Middleburg Auction Sales, Inc., Rt. 522, 3 mi east of Middleburg, 5 mi west of Selinsgrove Don and Walt Keister, Owners. Ray Long and Dave Imes, Auctioneers

FRI OCT. 14 5:30 PM Gap Auction Antiques and Household Goods sold at every auction Located off Rt. 41, Lancaster Turkey Hill Minit Market, cross RR bridge, Ira Stoltzfus & Son, Auctioneers

FRI OCT 14 7 PM Public Auction of Toy Farm Tractors and Implements Located at Harvest Drive Farm Restaurant, 1 mi south of Intercourse, PA Robert and Jeffrey Martin, Auctioneers

SAT OCT 15 - 8 AM Public Auction of Construction Equipment, Trucks, Trailers and Etc Located in Camp Hill, PA Vilsmeier Auction Co., Inc

ROYAL '83

at the farm, Royal Charolais Company, Greensburg, PA.
The Premier Sale Offering of 1983
SATURDAY, OCTOBER 1st — 1:00 P.M.

"Royal" is the leading breeder of Polled Charolais. Only because this herd has the depth of quality and the power of pedigree that comes from years of breeding and selection can they offer you such a select set of cattle in their 9th annual sale.

The 5 bulls - and the bull calves to be weaned in the ring - will provide the answer to your Polled herd sire needs.

The females are the best "Royal" has ever sold - offering a wealth of genetic quality and show ring potential.

55 LOTS
5 Polled Herd Bull Prospects
20 Cow/Calf Pairs*
15 Bred Heifers
15 Open Heifers

*All calves are born from March to early May. The majority will be weaned in the sale ring and sold separate from the dam.

Included are many herd bull prospects as well as show prospects.

Royal Charolais Co

W. LOGAN DICKERSON OWNER DON BOWMAN MANAGER
P.O. BOX 160 R.D. #9 BOX 43
101 NGWOOD, PA 15697 GREENSBURG, PA 15601
412 925-3585 412 836 1802

"The Place Where Integrity
is Always a Winner!"

For Catalogs: Buzz Garey, Sale Manager
Box C, 100 Walnut Lane, Morrisville, PA 19067
(215) 295-6664

PUBLIC AUCTION

142 ACRE FARM REAL ESTATE
SATURDAY, SEPTEMBER 24, 1983
1:00 P.M.

Auction to be conducted on the premises located at Route 4 Lebanon, S. Annville Township, Lebanon County, Pa. From route 322 turn north onto route 934 and proceed 1.9 miles to farm on left or south off route 422 in Annville at traffic light 1.6 miles to farm on right.

This auction features one of the larger Lebanon County farms ever to be auctioned. Many unique features and unlimited possibilities are available through the auction of this very desirable property.

Large 2½ story, 3 bedroom limestone and frame house with the first floor having a large living room with picture windows, cozy dining room with hardwood floor, beam ceiling and fireplace and kitchen with storage areas. Home heated by oil hot water, has drilled well and on lot sewerage system. Spring fed water supply in basement. Stream flowing past house and mature trees and shrubbery making this a very attractive setting.

Feature of the auction is an approx. 40' x 100' lodge type barn which is presently being used as an entertainment center. Main floor contains hardwood floors, knotty pine ceiling and 2 fireplaces. Basement area has a 3 car garage, storage and work area and rest rooms and shower facilities. Outside limestone patio which adds to this fine building and its nice setting.

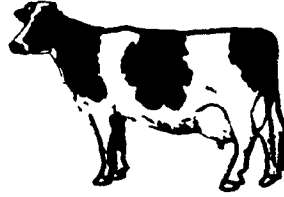
New 30' x 80' alum. open front livestock building with fenced coral and pasture. Gently rolling contoured farm land and pasture along with some wooded area. Tree lined driveway, lots of mature trees and shrubbery and other unmentioned particulars and features are a part of this lovely property. For a pictured brochure write or call auctioneer. Inspection by calling 717-273-1781. 10% down required on sale day with full terms and conditions given by attorney.

If in need of some real estate in the heart of Lebanon Valley with unlimited possibilities and potential with a zoning of R-1 residential but presently in full state of cultivation this is the property to inspect.

Conditions by
BALTAZAR T. & ANNA H. DINULOS
717-273-1781

Harry H. Bachman - Auctioneer
138 College Ave.
Annville, Pa. 17003
717-867-1809

DAIRY HEIFER SALE FRIDAY, OCT. 28, 1983 6 P.M.



Keister's Middleburg Auction Sales, Inc.
Rt. 522, 3 Miles East of Middleburg, 5 miles West of Selinsgrove.

For information call: 717-837-2222 or
717-524-5285 or 717-966-2856 or
717-922-1490

KEISTER'S MIDDLEBURG AUCTION SALES, INC.
Rt. 522 R.D. 3
Middleburg, PA
Owners,
DON & WALT KEISTER

Robert Mullendore, Auctioneer
Terms: Cash Restaurant Open

PUBLIC AUCTION SATURDAY, SEPT. 24, 1983 10 A.M.

**REAL ESTATE-FARM MACHINERY-
LAWN EQUIPMENT-TOOLS-
HOUSEHOLD GOODS**

On Route 422 in Limerick Twp., Montg. County, Pa. (Close to 422 By-Pass) at the Corner of the Hay Press follow Sunset Road, Turn Right onto Heffner Road, Watch for Auction Sign.

11 + ACRE FARMETTE — 2½ story Stone stucco House. First floor: Mod. Kit., Living Rm., Dining Rm., Utility Rm., Second floor: 3 bedrooms and bath. Third floor: 2 bedrooms. Oil/hot water heat. Full Basement. 32'x42' Steel Building. 24'x36' Barn w/over shute. 2 story Garage. Sm. Building. Approx. 768 Frontage. All Level Usable Ground.

Terms: 10% Day of Sale, Settlement 90 Days
Inspection: Sunday, September 18, 1 to 3 p.m. or by Appointment.

Phone 215-489-3797

FARM MACHINERY — 303 I.H. Combine w/13 ft. Grain head & 2 row corn head, 2010 John Deere Tractor w/front end loader & side mounted mower, Farmall Super C w/2 bottom plow & cultivator, I.H. 4 row corn planter, J.D. 24 T. Baler w/thrower, 2 Favorite Grain Wagons, 2 Bale Wagons, 16' Airflyte Grain Elevator, Wikomi Powder Seeder Spreader, 1961 Ford F350 Dump Truck, 1975 Chev. Impala (good condition), I.H. chopper, 3 pt. Hitch wheel hay rake, 16 hole Ontario Grain Drill, Manure spreader, 3 bottom trail plow, 9 ft. disc-single row corn picker, Cultipacker-#15 chopper w/corn head & direct cut head, soil saver, scraper blade, potato plow, 2 wheel Jackson trailer, 6 ft. Rotary mower, Approx. 800 bales of hay.

USED LAWN-TOOLS-MISC. ITEMS — John Deere 110 Riding Mower, Gravely 2 wheel super convertible w/rotary bush hog, Cub Cadet 100 Tractor, 1 Hp. Sears Air Compressor, Toro Rototiller, Sears 10 Hp. Lawn Tractor, 2 Toro push mowers, 125 Yamaha Dirt Bike, circular bench saw, 110 Gas tank w/pump, Lime spreader, Milk cans, swimming pool equip., 2 girls bicycles, pony saddle orange crush cooler, oak boards, Prizer cook stove, electric drills, tires — wheels — wood plane, Atlanta wood/coal circulator heater, Sears radial arm saw — electric motors.

HOUSEHOLD GOODS — Kelvinator 17 cu. ft. chest freezer, ornate high oak bed, sq. oak table—desk—wood chest, 3 pc. oak bedroom suite, oak wash stand — walnut side board, side board — 2 ice cream parlor chairs, oak dresser, 2 end tables, mahogany side board, maple kitchen set w/4 chairs, oak tables, oak arm chairs, school chairs, 2 televisions, Maytag wringer washer, Jim Beam bottles, Elvis Presley memorabilia, lamps, box lots, kitchen items.

ORDER OF SALE
Tools & Sm. Barn items first
Farm Machinery
Real Estate at 1 p.m.
Household Goods
Conditions by
GEORGE W. CLARKE

Nelson C. Weidenbaugh, Auctioneer
540 N. Lewis Rd., Royersford, Pa. 19468
Phone: 215-948-7619

Lunch & Parking—Cash or good check — I.D. required for bidders number

PUBLIC SALE

FRIDAY, SEPT. 23
AT 10:30 A.M.

Located in Mifflin Co., on the S.W. side of Belleville, PA., On Rt. 655, or ¼ mile E. of Ivan Zook's Equipment Store.

**FARM MACHINERY AND
SOME FURNITURE**

I.H. 966 Dal. W.F. Tractor 3600 Hrs. W/Weather Cab In Very Good Running Cond., Case No. 308-5-18 In. Semi Mounted Auto. Reset Plow, Used 200 Acres, Case 530 Dal. tractor (New Block) W/N.I. Hyd. Loader, I.H. 460 Tractor (New Block) W/Fast Hitch, Case 400 Tractor, J.D. 7 Ft. Blade, Case 12 Ft. Heavy Duty Transport Disk, Pittsburgh 20 Ft. Folding Transport Harrow, 8 Ft. Double Cultipacker, White No. 5100 No Till Planter W/34 In. Rows, Liquid Tanks, Dry Boxes, Monitor, Etc., N.I. No. 245 Tandem Axle Spreader W/Hyd. Gate Used 1 Yr., N.H. No. 273 Hayliner Baler w/Hyd. Control Thrower, EZtrail 6 and 8 Tons Wagons W/18 Ft. Bale Racks Like New, N.H. Wide Track Wagon W/Bale Rack, Hesston PT-10 Haybine, N.I. No. 402 Rola Bar Rake Like New, Allied 30 Ft. Elevator, N.H. No. 770 Harvester W/Pickup and 2 Row Narrow Heads, 2 Gehl No. 940 Unloading Wagons W/Roofs And 10 Tons Tandem Axle Chassis, N.I. 3 Pt. Snow Blower, Butler 32 In. Drying Fan, Agway Portable Air Compressor, Electric Fencers, Electric Motors, Heavy Electric Cord, Forks, Shovels, Assorted Bolts; The Usual Wagon Load Of Misc. Farm Items.

This Is A Very Good Line Of Modern Machinery.

Furniture
Signature (Green) Ref., Signature 30 In. (Green) Electric Stove, Wooden Dinette Table, Some Chairs, RCA Stereo Radio Record Player, and Some Misc. Household Items.

Terms - Cash

JOE D. AND SHARON BYLER
R.D. #1, Belleville, PA.
717-935-5375

Mark Glick - Auctioneer
Reedsville, Pa.

Lunch At Sale

ABSOLUTE AUCTION OF VALUABLE

45.05 ACRE FARM

On Thursday, October 6, 1983 at 2 P.M. at R.D.#1, Brogue, Penna., on L.R. 66056 and Pickle Road in Chanceford Twp. at Lucky. The following described real estate with improvements will be sold to the high bidder at absolute sale.

45.05 ACRE FARM

Farm consisting of 45.05 acres of land improved with a 2½ story frame house with kitchen, dining room, living room, 5 bedrooms & 1½ baths, full cemented basement, has asphalt shingle roof with 1½ story stucco addition to main house that was used as an office, attic for storage, basement area that was used as a showroom, also frame barn, large 36' x 214' Hi-Rise layer chicken house with a 20' x 40' egg workroom, with 2-48" x 80" cooler doors and 6,000 BTU 1 H.P. cooler. The layer house equipment consists of 4 cage row end kits, 4 cage waterer and kits, 76 cage sections, Bulk Feed delivery system complete with two 18.1 ton bulk bins, Bulk water delivery system, ventilation system with 7-1/2 & 1 H.P. 220V fans, air inlet, Model #2472 Kalglo light dimmer, all purpose medicator, 4 Kent Frost Proof water meters, total house capacity 20,520 birds, there is also a frame garage & other out bldgs. on this farm, approx. 15 acres of land is farming, balance pasture & woodland. There is frontage on both sides of state highway, also frontage on Twp. road. Real estate will be open for your inspection on Tues. evening, Sept. 27, 6 P.M. to 8 P.M., Sat., Oct. 1, 9 A.M. to 12 noon, or by special appointment with Mr. Stephen Whiteley, phone 845-8461 or auct. Land can be seen most anytime, zoned Agriculture, Tax Map HN-Parcel 32. This farm could be used in various ways. Remember, it will be sold to the high bidder, real estate will be sold as-is. Terms: 10% down, balance in 45 days. Other conditions will be given at time of sale. Farm formerly known as the Miller Farm. Not responsible for accidents on day of sale.

Sale by -

COMMONWEALTH NATIONAL BANK
Jacob A. Gilbert, Auctioneer
Phone 252-3591
Jack F. Ream, Attorney