

FARM EQUIPMENT

FARM EQUIPMENT

FARM EQUIPMENT

FARM EQUIPMENT

FARM EQUIPMENT



HARD WORKING VALUES
Waiver of Finance - Low Rate Financing
Low Cash Deals

NEW EQUIPMENT

- | | |
|--------------------|------------------------|
| 5088, demo | 370 disc |
| 3288, demo | 800 Early Risers |
| 784 RC w/TA | 720 auto. reset 5 btm. |
| 244 FWD | 2250 loader |
| 1420 combine, demo | #50 Shredder |

WHITE TAG SPECIAL
1420 Combine with 810 head

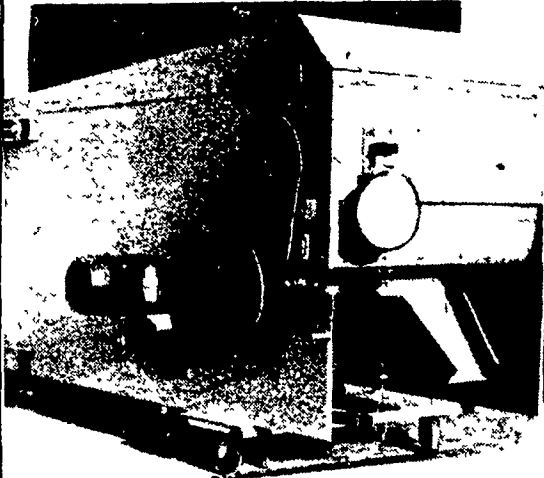
USED EQUIPMENT

- | | |
|-----------------------|------------------------|
| 706 Diesel | Irrigation pipe, 6" |
| IH 424 | JD 2 row potato digger |
| Farmall BN | Ontario grain drill |
| w/cultivators | Vicon disc mower |
| 2 Super C's | conditioner |
| Super AV | 843 Corn head, 30" |
| Haines bulk bodies | NH S69 baler |
| Mayrath auger 6"x27' | IH #37 baler w/thrower |
| 1500 Schwartz loader | IH forage blower |
| 800 workmaster loader | Gehl 4500 Skid loader |
| Massey Drill 16x7 | NH 1010 bale wagon |
| Woods Cutter | |

RINGTOWN FARM EQUIPMENT

RD 1, Ringtown, PA
717-889-3184
Since 1949

RISSLER FEED MIXERS



More and more farmers are finding that mixed rations are producing healthier and better livestock, plus better feed efficiency. Veterinarians, nutritionists consultants and feed analyst are recommending (TMR) feeding systems. Perhaps you can also increase profits by turning to this system.

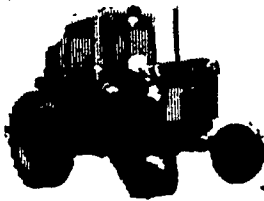
This **UNIQUE** design was developed so farmers can have more for less. A 15,000 lb. pintle web with 2" high paddles will tumble feed from end to end. An auger with left and right flighting will bring feed to center and keep the pile crowned. This auger will mix the feed from side to side at the rate of 1200 lbs. of feed per minute and will unload when drop out is opened. Convenient crank allows flow from 0 to 1500 lbs. a minute whatever desired.

Box is coated with urethane on inside with glass like finish that is abrasion resistant. All stress points are lined with 1/4" and 5/16" heavy steel. Heavy duty bearings can be relubricated and easily accessible. Takes less HP than conventional mixers.

Optional stainless steel floor. Electronic or mechanical instant-weigh scales.

For more information and our low low prices, Call or Write

I.H. Rissler Mfg.
RD #3 Denver Rd.
Denver, Pa. 17517
(215) 267-2453



NEW TRACTORS
3088
3288
234 4WD
244

NEW EQUIPMENT
720 plow, 5-18
510 plow, 5-18
IH 475 disc, 11'6"
540 spreader
335 wagon
18' bale wagon

USED EQUIPMENT
IH 475 disc, 11'6"
574 gas
IH 475 disc, 11'6"

USED TRACTORS
F 656 D
474 gas
656 D
Super C

LAMB'S FARM MACHINERY
Thorndale, PA
Phone 215-289-2876

USED TRACTOR PARTS

Notice: We're Dismantling The Following Tractors For Parts:

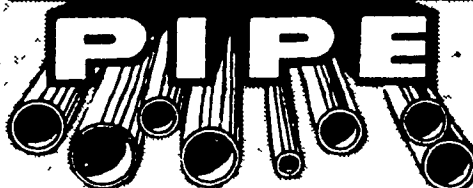
- CASE 1070
- DAVID BROWN 1200
- CASE 530

BINKLEY & HURST BROS., INC.

PH: (717) 626-4705

H. SCHWARTZ & SONS, INC.

NOW SERVING THE STATE OF DELAWARE DIRECTLY FROM WILMINGTON!



NEW, USED and RECONDITIONED PIPE
STANDARD - EXTRA & DOUBLE EXTRA HEAVY ALL SCHEDULES - ALL TYPES FABRICATION - THREADING CUTTING - WELDING
121 SO. MARKET ST. - WILMINGTON 19801
302-656-0276 or 215-0E1-4240

USED TRACTORS

- | | |
|-------------------------|---------------------|
| JD 4430 Diesel | Case 1270 Tractor |
| JD 2840 | Ford 800 |
| JD "LA" Tractor w/cult. | Ford Dexter Tractor |
| JD 50 | MF Pony w/Equip. |
| JD 3020 Diesel | |

SPECIAL! WAIVER AVAIL. TIL SEPT. 1, 1984 SPECIAL!
On Used Combines!



JD 6620 SIDEHILL COMBINE w/HEADS
\$56,000!

JD 4420 COMBINE w/HEADS
435 HOURS!

Massey Ferguson 410 D w/Cornhead \$7,000
JD 4400 Diesel Combine w/heads - Exc. Condition
JD 4400 Gas w/Cornhead

NEW EQUIPMENT SPECIALS

- | | |
|--|-----------------|
| JD 6500 Forage Blower | \$1,795 |
| Hesston 1750 Forage Harv. w/2-Row 30" Head | \$9,500 |
| JD 1710A Soil Saver | \$4,475 |
| JD 3960 For. Harv. w/3 Row Cornhead | |
| -Demo! | Call For Price! |

USED EQUIPMENT

- New Idea 322 2-Row Mtd. Cornpicker
JD 7000 30" 4-Row Planter
JD 2800 5-Bottom Plow
Gehl 120 Grinder Mixer

Special
Fox Super D.S.P.,
For. Harv. w/2-Row
30" Head
\$5900

SHOTZBERGER'S EQUIPMENT

Elm, Pa.
Phone: 717-665-2141



WENGERS INC.

251 South Race Street
Myerstown, PA 17067

717-866-2135

Nights Phone: 717-866-7147 or
717-273-9089

CONSTRUCTION EQUIPMENT



NEW 1983 TRAILERS ON SPECIAL

• 2 Axle, 4 Ton \$1450

RUBBER TIRED LOADERS

- | | |
|------------|----------|
| JD 544B | \$29,500 |
| OMC 770 | \$15,000 |
| Trojan 154 | \$3500 |

BACKHOES

- | | |
|--------------|----------|
| Ford 7500 | \$16,500 |
| Ford 4500 | \$10,500 |
| Long 5 in 1 | \$16,500 |
| (2) IH 3400A | \$8950 |
| IH 3820 | \$16,500 |
| MF 70 | \$16,500 |
| IH 350 | \$3950 |
| Oliver 2-63 | \$7500 |

BACKHOE ATTACHMENTS

- | | |
|------------|--------|
| IH 3141 | \$2000 |
| Sherman | \$2000 |
| JD 93 | \$3500 |
| JD 93A | \$4900 |
| Case | \$2500 |
| McConnell | \$2200 |
| Long - New | \$4450 |

MISC.

- CONSTRUCTION**
(40) Used hoe buckets ... From \$150
(25) Loader buckets ... From \$100
(30) Set forklift forks ... From \$300
(6) Winches ... Call
Wayne 984 Diesel
Street Sweeper \$8950

DOZERS

- | | |
|----------------|----------|
| Cat D8H | \$18,500 |
| AC HD7 | \$3500 |
| JD 450 | |
| 6 Way | \$12,500 |
| Case 350 6 Way | \$9500 |
| Cat D4C | \$12,500 |

TRACTORS WITH LOADERS

- | | |
|------------|--------|
| Case 580CK | \$6950 |
| Ford 600 | \$3250 |
| MF 20C | \$5950 |
| Ford 8N | \$2650 |
| IH 464 | \$6450 |

SKID LOADERS

- | | |
|------------|----------|
| OMC 1700 | |
| Diesel | \$6500 |
| Case 1845D | \$11,500 |

CONSTRUCTION DUMPS

- | | |
|---------------------------------------|----------|
| 1974 IH Diesel w/9' Body - Air Brakes | \$10,900 |
| (2) Mack 25 Ton Rock Trucks | Call |
| (3) Mack 20 Ton Rock Trucks | Call |

CRAWLER LOADERS

- | | |
|-------------------|----------|
| Cat 955H | \$16,500 |
| Cat 955K | \$21,500 |
| Cat 951B | \$19,500 |
| JD 350 | \$5475 |
| JD 350B w/Backhoe | \$18,500 |
| Cat 977L | Call |
| Oliver OC3 | \$2500 |
| JD 350 w/4 in 1 | \$8950 |
| Case 350 | \$8950 |
| IH 340 | \$4500 |
| Cat 941B | \$24,500 |
| Case 450 | \$11,500 |

TRAILERS

- | | |
|-----------------------|-----------------|
| 1983 2X 4 Ton | \$1450 & \$1600 |
| 1978 2X 6 Ton | \$2650 |
| 1983 3X 9 Ton | \$4400 |
| 1983 1X 2 Ton | \$1150 |
| 1983 2X 12 Ton | \$5800 |
| 1978 Freuhauf 42' | |
| Flat | \$7500 |
| (2) 1979 Strick 40' | |
| Flat | \$7000 |
| 1963 Gindy 40' | |
| Van | \$2500 |
| 1979 Fontaine 42' | |
| Drop Deck | \$9500 |
| 1983 2x6 Ton | \$3600 |
| 1977 10 Ton 5th Wheel | \$3950 |

LOG SKIDDERS

- | | |
|------------------|--------|
| JD 440C - Burned | \$9500 |
|------------------|--------|

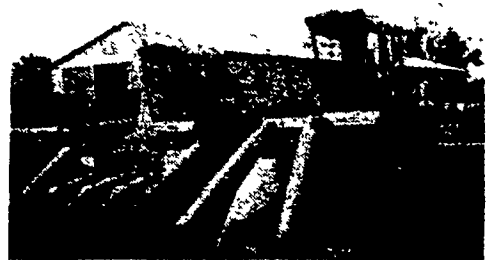
FORKLIFTS

- | | |
|------------------|----------|
| Int. 7000 - 21' | |
| | \$10,500 |
| Int. 4500B - 21' | \$12,500 |
| Ford 21' | \$12,500 |

TRUCK TRACTOR

- | | |
|-----------------------------|--------|
| 1974 Ford Louisville Diesel | \$6950 |
|-----------------------------|--------|

DIESEL N.I. UNI SYSTEMS
(Mix & Match Attachments)



- Tractors - 706D w/Cab, 705D w/Cab
- Husking Beds - 727, 726, 721
- Harvesters - 767, 760
- Sheller - 729A
- Pickup Heads - 766, 761
- Grain Heads - 715, 713, 711
- 4 Row Cornheads - 844N, 738, 731
- 3 Row Cornheads - 743N, 735, 725, 763, 724
- 2 Row Cornheads - 723, 762
- High Moisture Throat For 760
- Combines - 710