

REAL ESTATE

REAL ESTATE

REAL ESTATE

REAL ESTATE

REAL ESTATE

REAL ESTATE

REAL ESTATE

**FARMS FOR SALE
CHESTER COUNTY
NEAR OXFORD**

190 acre dairy farm, 150 acres tillable, 40 stanchions, large loafing area for cows, 4 large silos.

3 acre building lots only 3 acres per lot.

165 acre dairy farm, 50 stanchions.

100 acre general farm.

85 acres of bare land, no building.

CUMBERLAND COUNTY FARMS

150 acre dairy 100 tillable limestone land, 2 large silos, 525 gal. milk bulk tank, large meadow, large stream, 42 stanchions, barn and house.

152 acre dairy, 25 acres of meadow, stream, 40 stanchions, 2 large silos, 14x60, 12x40. Large dairy barn, bulk milk tank, house, bath. Both farms in Shippensburg area.

SOUTHERN LANCASTER COUNTY

TOM THUMB PARADISE — Fulton Twp. near Wakefield, 1 1/2 acres, 2 bdrm ranch house, barn, pavilion 12x24. Inside and outside fireplaces, over 20 large shade trees, 2 nice streams.

Call: M. E. Lehman
717-394-2460 Broker
or Dan Snader
717-656-7789 Agent

(84-T) 49 acre farm with lovely 1787 native stone home near Gettysburg, PA. Excellent condition, large rooms, stream through all fields, small pond, barn, implement shed, chicken house and workshop. \$169,000.00

Call 717-642-5851

TOWN AND COUNTRY REAL ESTATE

Fairfield, PA.

WANTED

We have qualified buyers for the following:

1. 200+ acre farm with 15 or 20 acre lake for use as a camp.
2. 20+ acres, mostly wooded, with large old house. Seclusion is most important.

WANT TO BUY? Send or call for our list of 20 farms and land in Eastern Penna.

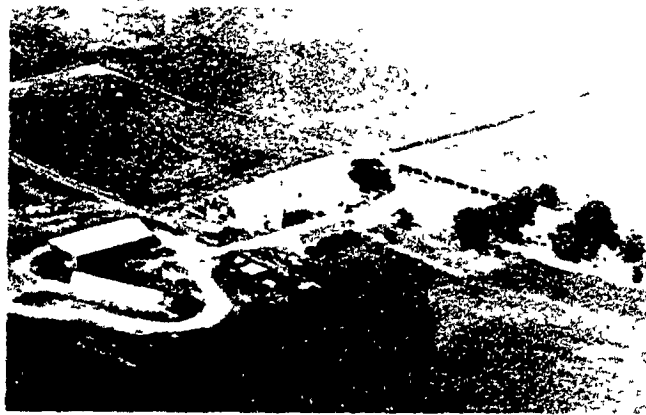
KENNETH GROSSE, Realtor

"Farm and Land Specialist"

418 W. Main St. Lansdale, Pa., 19446

Ph. 215-855-1191

CATTLE FARM FOR SALE



"BREEZY HILL ACRES"

WOODSTOWN, SALEM COUNTY, NEW JERSEY

Fully equipped working farm Registered Charolais beef herd 110 cows, 106 calves, 4 herd bulls, large specially equipped barn, workshop, equipment sheds, 120 acres fully fenced with additional land leased. Restored farmhouse circa 1820 with new modern apartment. Staff available \$600,000

For further info. and brochure call. ART DUFFIELD REALTY (609) 848-4446 Ask for Bob

NORTHAMPTON COUNTY...

Large Dairy Operation - 140 Acres (m/l)

- ★ 120 Free Stalls
- ★ 100 Ft. Auger Bunk Feeder
- ★ (4) 20x60 Harvestore Silos
- ★ 20x30 Harvestore Silo
- ★ 16x45 Stave Silo w/ Unloader
- ★ Double-Six Clay Herringbone Milk Parlor
- ★ DeLaval Milking System (Six Milkers)
- ★ (2) 1000 Gal. Milk Tanks
- ★ Large Facilities To Raise Heifers
- + FIVE (5) LIVING QUARTERS...
- Large 5-Bedroom Brick Home
- 4-Bedroom Frame Home
- (2) 2-Bedroom Apartments
- Mobile Home With Addition

THIS FARM HAS MANY OTHER POSSIBILITIES!

RICH BRANDT REALTORS

2230 5th St. Highway, Reading, PA 19605
(717) 274-3622 - office - (215) 378-1122

**3 Important Properties
MOOSIC - WHITE HAVEN
& CHESTER COUNTY**

For COMMONWEALTH OF PENNSYLVANIA

Department of GENERAL SERVICES

AUCTION

SUBJECT TO CONFIRMATION

SALE 1: 1105 Ac. MOOSIC Boro
Lackawanna Co., Adj. SCRANTON AS AN ENTIRETY

1,050 Ac. in Moosic (Glenwood Lake) inc 55 Ac Pittstown Twp., Luzerne County

PROPOSED ZONING

'PLANNED DEV'T ZONE DISTRICT' Rec/Golf/Ski & Resid/Comm'l Dev't.

PRIME for MAJOR DEVELOPMENT

Inspection Wed, Sept 14 at 1 P.M. (Davis St Exit, Route 1-81)

SALE: 713 Main St. MOOSIC BORO BLDG SATURDAY, SEPTEMBER 24 at 11 A.M. DEPOSIT: \$50,000 By CERTIFIED CHECK

**SALE 2: THE POCONOS
370 Ac. w/Buildings**

WHITE HAVEN Boro

(Former White Haven Center)

PA's PREMIER RESORT AREA

Recent Exciting News - Buy Now! AS ENTIRETY ONLY

S W Cor. I-80 & White Haven Exit (#40) 4 Mi W of Exit #35 (Pocono Mt Intchg. of Tripike) Zoned O-1 150,000 Gal. water tank (Lines and Buildings need restoration)

Inspection. Thurs., Sept. 15 at 1 P.M.

SALE: SAT., SEPT 24 at 1 P.M.

in New White Haven Center Admin. Bldg. DEPOSIT: \$25,000 By CERTIFIED CHECK

**SALE 3: CHESTER COUNTY
481 Ac. w/Buildings**

LOAGS CORNER - Glen Moore/Elverson 3 PARCELS OR ENTIRETY • Fronts on 5 Roads

(Part of Original 'Fuzzydele Farm')

PARCEL 1 10 Ac - Stone Colonial Residence (needs restoration) PARCEL 2 237 Acres w/ House & Bldgs PARCEL 3 233 Acres

Restricted to Farm & Related Uses

Inspection. Wed., Sept. 21 at 1 P.M.

SALE: at Little Conestoga & Church Rds SATURDAY, OCTOBER 1 at 11 A.M.

DEPOSITS BY CERTIFIED CHECKS #1-\$7500 - #2 & #3-\$35,000 Each

REQUEST ILLUSTRATED BROCHURE

Louis Trainman
AUCTION COMPANY
Real Estate Brokers - AUCTIONEERS

1519 Spruce Street PHILADELPHIA, PA 19102 (215) 545 4500
NEW JERSEY (609) 365-0030 • WASHINGTON DC (202) 682 3966

**NORTHCENTRAL, PA.
FARMS & INVESTMENTS**

Priced To Sell

Priced To Sell

Over 1/4 million gross, small town grocery store, stocked, and equipped, 4 bedroom 2 bath apartment above. Reduced to only \$125,000 #1950-T Call 717-265-3171 or 265-8903

Christmas tree plantation, land suitable for X-mas trees, farm, farmettes, Call and let us help you with your Real Estate needs. 717-265-3171 or 265-8903

DAIRY OPERATION

92 large comfort stalls facing in. Set up for round hay bales. New milking equipment with energy saver. 1250 gal. surge tank, 20 x 60 silo w/unloader, 5 bay machine shed. 16x34 shop, 28x50 heifer barn, 2 barn cleaners. 225 acres all tillable and pasture. \$195,000 M-452 PH: 717-662-2138

Small Family Business

Card, Gift, & Stationery Store, nice location in the beautiful town of Wellsboro. Has been going concern for many years. Owners will gladly help someone new get started. Business \$10,000 plus inventory. W-717 PH: 717-724-5921

NY/PA Border Dairy Farm

48 stanchion barn w/drive in addition for storage, shop & extra heifer stalls, 5 ton feed bin, 180+- acres, farm w/mostly level fields, approx. 160 tillable, 4 Bdrm farm house, also 2 improved trailer sites w/hookups, existing FHA loan, just \$82,500 M-518 PH: 717-662-2138

Beef or Horse Farm

38 acres w/in 3 miles from Wellsboro. Nice large country home w/modern kitchen, lgvrm w/stone fireplace, family room, office or den, 5 bdrms, 2 baths. Condition of all bldgs good, lots of remodeling has been done. Has large bank barn & garage. Up to 40 additional acres available. Priced at \$79,500 W-697 PH: 717-724-5921



Offices. Area Code - 717
Tioga, Potter & Bradford Counties call or write
WELLSBORO, 120 East Ave 724-5921
MANSFIELD, RD 1 Box 41 662 2138
TOWANDA, Bridge St 265 3171

OUR #1 AIM IS SERVICE

CUMBERLAND COUNTY

120 acre dairy 85 acres tillable, woodland, pastures, 3 bedroom house with conveniences, frame bank barn, 24 stanchions, pipeline bulk milk tank 2 silos one with automatic feeder, 96 free stalls, heifer barn

80 A Poultry farm, 50 A tillable Bal Pasture 2 1/2 story 4 BR dwelling 60 x 80 Frame Bank Barn 20 x 65 Machinery Shed, 2 Story 44 x 400 Broiler house w/Empire Koser Contract

General Farm, 410 acres, 380 acres tillable, 4 bedroom house with conveniences, 3 bedroom house with conveniences, barn

LANCASTER COUNTY

50 acre farm w/4 bedroom dwelling

83 acre dairy, 65 acre tillable, 4 bedroom house with conveniences 32 comfort stalls, large loafing area, 2 silos

13 A farmette near Mt Joy, 2 1/2 story, 4 BR dwelling, Frame Bank barn garage with other out buildings, Reduced to \$83,500

LEBANON COUNTY

79 A General Farm near Jonestown, 70 A tillable small stream between house & barn, Completely remodeled with new addition, 4 BR dwelling Large Bank barn, poultry house, 40 x 40 implement shed, 10 x 40 silo Two car garage, must be seen to be appreciated

Fredericksburg R D, 148 A General Farm, 106 A tillable bal woodland pasture with stream, 2 1/2 story 3 BR Stone-Stucco dwelling, 45 x 90 Frame bank barn, 3 story poultry house, Large implement Shed The farm has many possibilities

PERRY COUNTY

180 A General Farm approx 90 A tillable, balance mostly wooded and pasture with stream Large frame bank barn, modern 4 BR dwelling Excellent owner financing to qualified buyer Priced to sell \$180,000 00

BERKS COUNTY

Near Shillington 23 A Farmette 10 A tillable 8 A pastures & orchard 2 1/2 Story 3 BR dwelling 3 Story Bank Barn, garage and workshop combination Also 12 x 70 Mobile Home for extra income

NORTHUMBERLAND COUNTY

Near Pillow 16 A Farmette 4 year old 2 Story 4 BR dwelling 69 x 90 Husky Built Clear Span metal building w/12 ft high door 36 x 124 Metal Frame Plastic Greenhouse w/2 LP Gas Furnaces 1/4 A Asparagus Patch A very desirable small property

**CHRISTIAN M. MOSEMANN
REAL ESTATE BROKER**

734 Main St. Akron, Pa. 17501

Office Phone (717) 859-1004 - 24 hr service

Paul Musser 717-733-8107

James Marsh 717-529-2678

Milton Huber 717-299-5136