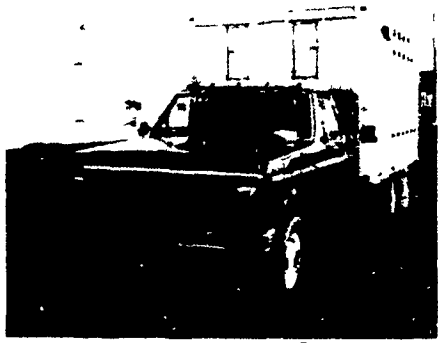


SAVE BIG BUCKS ON OUR TRUCKS!



FORD F350 Diesel or Gas

**ALWAYS IN STOCK
EBy ALUMINUM BODIES**

Immediate Delivery

New Holland  Route 23
New Holland, Pa.
717
354-4901

TRUCKS & TRAILERS

For Sale - 9', 10', 14' & 20' wooden livestock bodies. 20' Morgan van body. 20' van body. M.H. Eby, Inc. Blue Ball 717-354-4971.

For Sale - IH 2000D grain truck, 600 bu. cap. Air tag axle, 22 ton hoist, good cond., Warren Co., NJ 201-753-5313.

TRUCKS & TRAILERS

Wanted - Trucks and Storage trailers. We also buy trucks for parts and truck parts, motors, trans. and rears. Gas or diesel. Berks Co. 215-944-9871.

5 ton army truck dump, tandem all wheel drive, 11.00x20 tires, 5 speed trans., hi-lo range, \$4600, 609-769-3183.

- *1984 Aries 4 door
- *2-1980 Colts, auto. and 4 speed
Special price, \$3795
- *1982 TC3, 2 door, 1 owner, special price like new
- *2-1981 Omni, stick & automatic
- *1981 B-350 Van, 9000 GVW
- *1984 Van

PETTICOFFER DODGE, INC.

Route 230 East Next to Shopping Center
Elizabethtown, PA
PHONE 717-367-1808

PICK-UPS

- 1981 Ford F250 Custom, 300 6-Cyl., 3 Speed, PS, PB, 21,000 Miles. \$6995
- 1981 GMC Sierra 305, V8, Auto., PS, PB, AM-FM, Chrome Rails, 2 Tone Red & White \$7495
- 1981 Ford F100 Custom, 300 6-Cyl., 3 Spd. with Overdrive, PS, AM Radio \$6995
- 1980 Chevy Blazer, 2 WD, 6 Cyl., Auto., PS, PB, Air Cond., AM-FM & tape, All Black, 29,000 Miles \$7995
- 1980 Ford F100 Ranger XLT, Short Bed Step Side, 302 V8, Auto., PS, PB, AM-FM Stereo, 2 Tone Paint \$7495
- 1979 Datsun, 4 Cyl., 4 Speed, AM-FM, 30,000 Miles \$4695
- 1979 Ford F150 Custom, 300 6 Cyl., Auto., PS, PB, AM Radio \$5795
- 1979 Ford F100, 302 V8, Standard Shift, PS, PB. \$4995
- 1979 Plymouth Arrow Sport, 4 Cyl., Auto., AM-FM Aluminum Cap \$4895
- 1978 Dodge D100 Short Bed, 6 Cyl., 4 Spd. Overdrive, AM-FM & Cassette. \$4295
- 1970 International 1/2 Ton, V8, 3 Spd., AM Radio \$1095

VANS

- 1981 Ford 15 Pass. Super Van, 351 V8, Auto., PS, PB, Front & Rear Air Cond. & Heat, AM-FM Stereo, 32,000 Miles. \$10,500
- 1979 Dodge B200 Panel Van, 318 V8, Auto, PS, PB, AM Radio. \$5495
- 1972 Chevy Camper Van, with Pop Top, Stove, Refrig., Sink, Air Cond. \$3495

STAKE BODY

- 1978 F350 12' Stake, Dual Wheel, 10,000 GVW, 351 V8, 4 Speed, PS, PB, Rebuilt Motor, New Clutch & Pressure Plate. \$6995
- 1973 GMC 500 Stake Body, 350 V8, New Short Block, 4 Spds., PS, 18,500 GVW, 12' Body \$3995

4 WHEEL DRIVES

- 1983 Ford F150 Explorer, 302 V8, Auto., PS, PB, Lockout Hubs, 2 Tone Paint, Like New, 4,000 Miles \$12,900
- 1980 Suburban 3/4 Ton, 350 V8, Auto., PS, PB, AM Radio, Lockout Hubs \$8495
- 1979 Dodge Ram Charger, 318, V8, Auto., PS, PB \$6995
- 1979 Chevy Short Bed, Step Side, 350 V8, 4 Speed, PS, PB, Air Cond., AM-FM Stereo, All Black \$8495
- 1979 Chevy Blazer, 350 V8, Auto., PS, PB, AM-FM & Cassette, 37,000 Miles, Black \$8995
- 1978 Chevy Short Bed Scottsdale, Step Side, 350 V8, Auto., PS, PB, AM Radio, Dual Gas Tanks, 39,000 Miles \$7995
- 1978 Ford F250 Crew Cab, 351 V8, Auto., PS, PB, AM Radio, Lockout Hubs, Tonneau Cover, 48,000 Miles \$7995
- 1977 Ford F150, 6 Cyl., 4 Speed, PS, PB, AM Radio, 37,000 Miles. \$6995
- 1972 Chevy Suburban, 350 V8, Auto., PS, PB, Dual Air Cond., Runs Great! \$2995

UTILITY BODY

- 1980 Chevy C30, Dual Wheel, with Morreysville 10' Utility Body, 454 V8, 4 Spd., PS, PB, Dual Tanks, 10,000 GVW \$8995

DUMP TRUCK

- 1975 Chevy C65 8 Ft. Dump, with commercial size plow, 427 V8, 5 Speed, 2 Speed Rear, 10x20 Tires, 28,000 GVW \$8995

MIKE RHODES & CO.

"THE TRUCK PEOPLE"
Rt. 663 & Swamp Pike, Gilbertsville, Pa.
Area Code 717 or 215 Call Toll Free
1-800-362-7655
or 215-327-1380

REAL ESTATE

For Sale - by owner Poultry farm located on 13A Juniata Co. 344 cage layer 15,000 capacity, 3-story block pullet raising facility, 11,000+ cap Nice home (well insulated 2-story 3 bedrm) Yearly income \$30,000 Operation with contracts, partial financing at 5% (\$20,000), 717-463-2393 or 717-837-3131.

Experienced farm family seeking dairy farm to buy or rent this fall. Have equipment and cows 717-768-3373 after 6 PM.

For Sale - Dairy farm, 400 acres, 40 head milk cows, 40 heifers, Eastern milk market, 2 barns, bull pen, hen house, other buildings, 3 ponds, woods, gravel, spring, 12 room house, 2 enclosed porches, large wood and coal furnace in large cemented cellar. Large yard, good hunting and trapping. Wayne County. Other Amish and Mennonites in area. Reason for selling: old age and no Real Estate agent involved. Can be bought bare farm or with livestock. Tools and feed on hand. Cash or terms with low interest rate. For more information, write or call Thomas S. Winter, Sr., RD1 Clyde, N.Y. 14433 Phone 315-365-2559 Can be seen anytime, just let us know.

FREE--FOR GOOD HOMES-Free booklet with current listings of homes, farms, farmettes, land, investment property in South Central PA. Write DILLARD REALTY, 252 N. Main, Mercersburg, Pa. 17236.

MERCERSBURG, PA. - Historic plantation farm, 223 acres, woods, stream, barn. Development potential, 151 acres tillable. Beautiful! DILLARD REALTY 717-328-5532 or 328-5532.

For Sale - 7 1/2 acre farmette, 3 miles west of Carlisle, road frontage along 641, 3 bedroom house, 717-243-4076.

SALE OF FARM BY UNITED STATES GOVERNMENT
Farmers Home Administration, 5 East Avenue, Wellsboro, PA 16901 has for sale the following property: 115 acre farm located approximately 2 1/2 miles south of Osceola, PA. Includes a "4' x 30' pole shed, drilled well, and telephone and electric services. Land use breakdown is as follows: 40 cropland, 30 permanent pasture, 40 woodland with balance in farmstead and roads. Formerly owned by Ernest H. and Ariene M. Rank, located in Townships of Deerfield and Osceola, County of Tioga, PA.

Terms: Cash or financing possible on terms of not less than 5% down with the remaining balance amortized over a period not to exceed 25 years at an interest of 11 1/2%. Property may be inspected by calling Farmers Home Administration at 717-724-4812 Sealed bids, with a deposit of not less than 5% of the bid in the form of cash (sent at bidder's risk), cashier's check, certified check, postal money order, or purchaser's check made payable to Farmers Home Administration may be sent or brought to the Wellsboro office. Bids will be accepted until 1:00 p.m., September 29, 1983, at the Farmers Home Administration, 5 East Avenue, Wellsboro, PA and will be opened publicly at 1:30 p.m. the same date and place.

The Government reserves the right to reject any or all bids. The deposit of each unsuccessful bidder will be returned promptly by certified mail with a letter of explanation. The property will be sold without regard to race, color, religion, sex, age, national origin or marital status.

REAL ESTATE

340 ACRE FARM Stewartstown (just north of Maryland border) with full set of buildings, owner financing, call for information and inspection BAUGHMAN REALTORS 717/741-4671 or 717/993-2375 (204827)

Northern Dauphin Co. PA 70 acre farm of good productive land and good buildings
JCT Realty Inc
Millersburg, PA
Salesman Don Miller
717-896-3252

153 acre limestone farm House, eight rooms and bath Barn, 40 stalls, pipeline milkers, bulk tank, 20x70 silo Big Spring Road, Newville, Cumberland County Phone 776-5376

Farm for rent or sale, set up for dairy, 10 plus acres, terms by owner 814-398-8073

82 A general farm for sale, 4 bedroom brick house, bank barn, buildings good cond., Conewago Creek frontage, 8 mi. north of York, PA 717-292-2267

SALE OF FARM BY UNITED STATES GOVERNMENT. Farm containing 190 acres, 50 cropland, 76 pasture, 61 woodland with balance in farmstead and roads Barn 2 story, stable, shop and wagon shed. Two story shingle sided frame dwelling, 4 bedroom, 1 1/2 bath, full basement, electric baseboard heat Formerly owned by Newgate Farms partnership; Glynn H. Needham, co-partner and Richard C. Dietrich, co-partner Located in the township of Monroe, County of Bedford, Pa., 8 miles South of Clearville, Pa on LR 05010.

BID DEPOSIT. Bid must be accompanied by cash (sent at bidder's risk), certified check, cashier's check, postal money order, bank money order or personal check, payable to the Treasurer of the United States, for at least 5% of the total bid **RATES & TERMS:** Cash or terms of not less than 5% down payment with the remaining balance amortized over a period of 25 years at 10 1/2% interest.

TERMS OF SALE: Contact County Supervisor, Farmers Home Administration P.O. Box 121, 120 West John Street, Bedford, Pa 15522 for appointment to inspect the farm. Sealed bids are invited and will be accepted until 12:30 PM EDT, September 20, 1983 at the Farmers Home Administration, P.O. Box 121, 120 West John Street, Bedford, Pa and will be opened publicly at 1:30 PM EDT the same date and place The Government reserves the right to reject any or all bids This farm will be sold without regard to race, color, religion, sex, age, national origin or marital status.

Further information and bid forms may be obtained at the Farmers Home Administration, P.O. Box 121, 120 West John Street, Bedford, Pa 15522, telephone (814) 623-9077

LET'S TALK TURKEY! We now have two turkey operations available, buy now and gobble up the profits! One has approx 18 acres, the other has 45 acres. Both in Lower Chanceford Twp., York County, PA. Call for details. BAUGHMAN REALTORS 717/741-4671 or 717/862-3869

106 acre dairy farm for sale, located in Finger Lake's area, near Mennonite Church, owner will hold mortgage 607-776-4995, 607-292-3495

Tioga County, 78 acres near Wellsboro, live-eights tillable, three-eights wooded, stream, paved road, good hunting, fine for investment, retirement, \$750 per acre, 717-724-1187

REAL ESTATE

Old farmhouse, 17 ac pond, barn, \$25,000 66 ac farm, old house, barn \$66,000 106 ac 2 houses barn, good condition, \$95,000 FREE LISTS ERA Homestead Realty, 267 S Main Mansfield, PA 16933 717-662-3287

FREE CATALOG! Describing numerous Penn sylvania farms camps acreage tracts, cottages homes and businesses Write Dept LF, WEST REAL ESTATE AGENCY, INC., 5528 William Flynn Highway, Gibsons, PA 15044

Bradford County, PA, 105 acre farm, approx. 70-acre tillable, 21 pasture, 15 wooded, lovely 4-bedroom ranch with 2-baths, greenhouse, 2-car garage, pole barn, 84x40 with 12x80 overhang shed for storage, new horse barn 25x40 with 4 box stalls, 40x60 2-story barn and steer shed No C-7882 WEST REAL ESTATE AGENCY, INC., RD #2, Box 120, Gillett, PA 16925 or call (717) 537-2400

For rent - 140 acre limestone dairy farm in Cumberland Co Percentage basis. Must have equipment Must be experienced and ambitious Send replies to Lancaster Farming, P.O. Box 366, R-66, Lititz, PA 17543.

SALE OF FARM BY UNITED STATES GOVERNMENT Farm containing 151 acres, 88 cropland, 30 pasture, 29 woodland with balance in farmstead and roads, 1 Barn, 2 story (condition poor), 1 milking barn with milk house and feed room 40' x 70' (50 cow tie stall), shop and machine shed Dwelling two story, 4 bedroom, full basement, oil fired furnace needs extensive renovation Formerly owned by Thomas E Racine and Mary Janet Racine located in the township of East Providence and the township of West Providence, County of Bedford, Pa. 1 mile East of Mench on LR 05094.

BID DEPOSIT: Bids must be accompanied by cash (sent at bidder's risk), certified check, cashier's check, postal money order, bank money order, or personal check, payable to the Treasurer of the United States for at least 5% of the total bid. **RATES & TERMS:** Cash or terms of not less than 5% down payment with the remaining balance amortized over a period not to exceed 25 years at 10 1/2% interest

TERMS OF SALE: Contact County Supervisor, Farmers Home Administration, P.O. Box 121, 120 West John Street, Bedford, Pa 15522, for appointment to inspect the farm Sealed bids are invited and will be accepted until 10:00 AM EDT September 20, 1983 at the Farmers Home Administration, P.O. Box 121, 120 West John Street, Bedford, Pa and will be opened publicly at 11:00 AM EDT, the same date and place The Government reserves the right to reject any or all bids This farm will be sold without regard to race, color, religion, sex, age, national origin or marital status

Further information and bid forms may be obtained at the Farmers Home Administration, P.O. Box 121, 120 West John Street, Bedford, Pa 15522, telephone (814) 623-9077.

Farmette for sale - 10 acres, 7 miles north of Lewisburg, PA, new 5 bedroom ranch home, two car garage, beautiful view, \$78,000, 717-568-4764

GREENCASTLE, PA. - Showman's stock farm on 22 acres, handsome new 10 room house, large barn, all modern facilities Seller relocating DILLARD REALTY - 717-328-5532 or 328-3953

WE ARE NOW AUTHORIZED OLDSMOBILE DEALERS!

★ Long-Term Leasing Available ★