

Sussex County Fair winners announced

AUGUSTA, N.J. — A featured event at the 1983 Sussex County Farm and Horse Show was the first annual sheep shearing contest sponsored by the county's Sheep Breeder's Association.

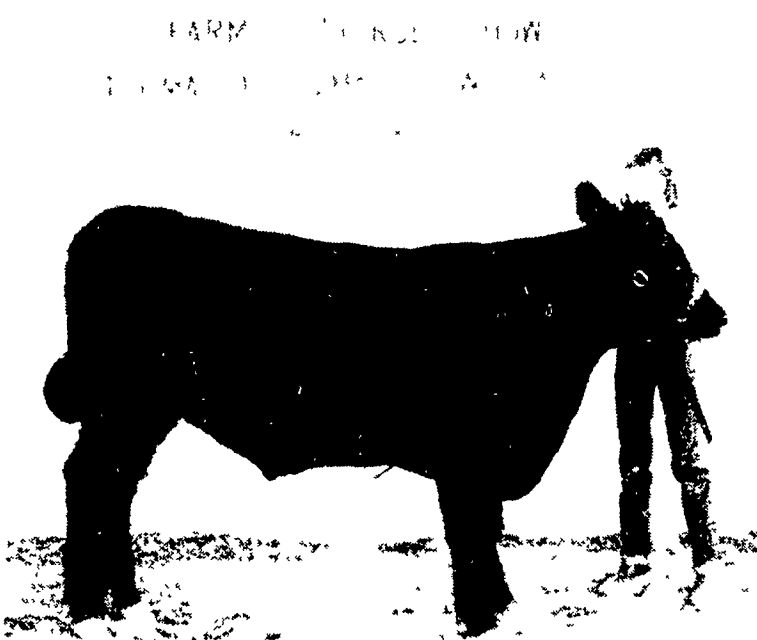
Winning the Senior Men's Division was Mik Brodhecker, Newton, N.J. Katherine Tyler, Glen Arm, Md., won the Senior Women's Division and Jeffrey Traver, Pleasant Valley, N.Y., won the Junior Men's Division.

For the contest, each contestant was required to shear two sheep using his own shearing equipment and a 50-foot extension cord. Both sheep had to be sheared for a possible 100 points from the judges.

Other winners were: Senior Men's Division, William MacCauley, Atglen, second; Senior Women's Division, Carla Kostelnik, Newton, N.J., second and Judy Watlerdorff, York, third; Junior Men's Division, Bill Ottaway, Pleasant Valley, N.Y., second, and David Albert, Trout Run, third.

In addition to the shearing contest, livestock and dairy shows were held. The results are as follows:

- OPEN SHEEP SHOW
- Junior Suffolk Show
- Champion Junior Ram
- Shawn Thayer
- Reserve Champion Ram
- Nicholas Klose
- Champion Ewe
- Kimberly Thayer
- Reserve Champion Ewe
- Lehigh County FFA
- BORDER CHEVIOT
- Champion Ewe
- Doolittle's Farm
- Reserve Champion Ewe
- Mike Koehler
- SOUTHDOWN
- Champion Ram
- Kimberly Thayer
- Reserve Champion Ram
- Lorie Stauble
- COLUMBIA
- Champion Ram
- Andros Farms
- Reserve Champion Ram
- Bob and Suzie Leib
- Champion Ewe
- Bill Ottaway
- Reserve Champion Ewe
- Andros Farms
- CORRIEDALE
- Champion Ram
- Krazy Lane
- Reserve Champion Ram
- Bill Brennan
- Champion Ewe
- Krazy Lane
- Reserve Champion Ewe
- Richard and Betty Hathaway
- DORSET
- Champion Ewe
- David and Gail Schultz
- Reserve Champion Ewe
- Peter LeVan
- HAMPSHIRE
- Champion Ram
- Sharon Peckham
- Reserve Champion Ewe
- Sandra Skvarka
- Champion Ewe
- Adele Leonard
- Reserve Champion Ewe
- Ernest and Phyllis Fiebotte
- MONTADALE
- Champion Ewe
- Arnold and Katherine Tyler
- Reserve Champion Ewe
- Arnold and Katherine Tyler
- NORTH COUNTRY CHEVIOT
- Champion Ram
- Deborah Fisher
- Reserve Champion Ram
- S Livingston
- Champion Ewe
- Deborah Fisher
- Reserve Champion Ewe
- S Livingston
- OXFORD
- Champion Ram
- Adele Leonard
- Reserve Champion Ram
- Kathi Elander
- Champion Ewe
- Kathi Elander
- Reserve Champion Ram
- Ross Stoddard



Cory Eick, Newton, N.J., poses with her grand champion qualifying steer, a title the pair earned at the Sussex County Fair.

RAMBOUILLET
Champion Ram
Somerville Sheep Farm
Reserve Champion Ram
E Richard Eberts
Champion Ewe
Billy George Leib
Reserve Champion Ram
E Richard Eberts

SHROPSHIRE
Champion Ram
Yoder
Reserve Champion Ram
David and Gail Schultz
Champion Ewe
Edward Peckham

(Turn to Page A29)



Winning the grand champion title in the 4-H Market Lamb Show was Susie Garlick, Branchville. The lamb sold for \$47.50 per pound.

D 7807 specifications--a mid-size tractor that really measures up!

Horsepower	73 pto (manufacturer's rating)
Engine	Deutz F4L 913, direct air-cooled diesel
Model	4
Cylinders	4
Bore/stroke	4 02 x 4 92 in (102 x 125 mm)
Displacement	249 cu in (4085 ccm)
Rated speed	2,400 rpm
Clutch	Dual, dry disc
Transmission	Deutz TW 56 20
Speeds	12 forward, 4 reverse, triple range
Speed range	1 3 to 18 6 mph (2 16 to 30 kmh)
Gear synchronization	All, column-mounted shift
Range synchronization	None
Differential lock	Mechanical, foot-operated
Brakes	Externally-mounted, double drum
Service	Hydraulically-actuated expanding shoe
Parking	Independent, hand-operated

Power-take-off	Independent, dual-speed
Shaft	1 3/8 in 6-spline single shaft
Speed (at engine speed)	540 (at 2,025 rpm), 1000 (at 2,170 rpm)
Bare Operating Weight	6614/7429 lbs 2WD/4WD
Wheelbase	95 inches

Check Out the Fall Deutz Line NOW!
43 to 145 H.P.
The "Mercedes" of Tractors is still
Available at Rebates Ranging up to \$7500.
3 Programs: Including 9.9% Financing
& Waiver

D 7807 features--combination of performance, convenience & value!

Take a close look at the new Deutz-Fahr D 7807. It's loaded with features you'll like — many you'd expect to find only on a much larger tractor. Some are highlighted in the photos below:

A — Efficient mechanical transmission. It's rugged, but quiet. And efficient, as only a mechanical can be. Column-mounted synchromesh shifting gives easy operation — and maneuverability, too!

B — Famous air-cooled engine. First time we've used the popular 913 series engine (featured in bigger DX models) to power an "07" model in the mid-size range! Larger displacement for long service life. Remarkable fuel economy for lowest operating cost. And exceptional lugging ability for the toughest jobs!

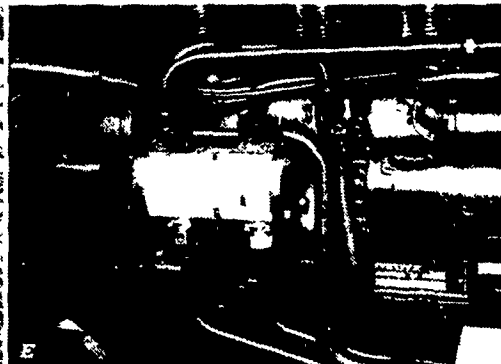
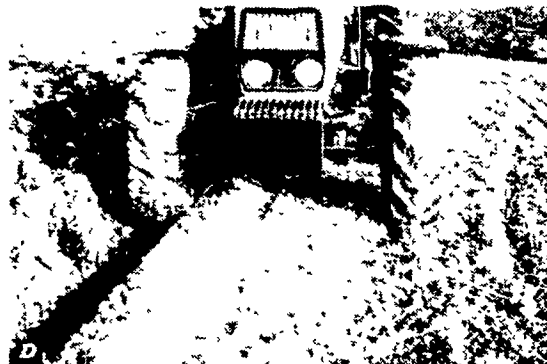
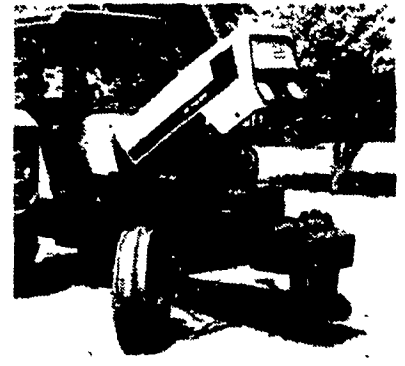
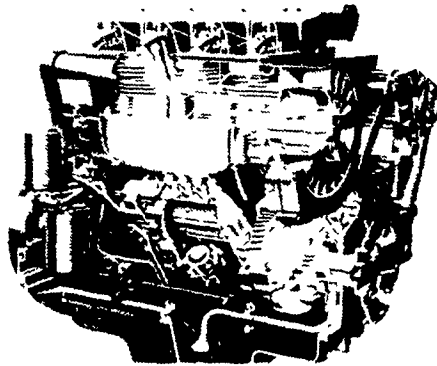
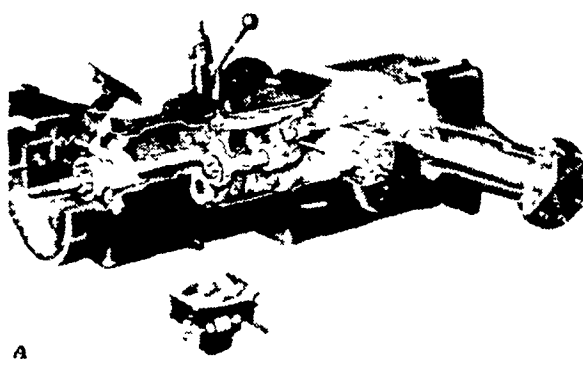
C — Practical convenience throughout. Hinged engine hood flips up and out of the way, for all-round access to engine area. Short turning radius makes

the D 7807 as easy to handle as many smaller tractors.

D — Mechanically-powered front-wheel drive. Like all Deutz-Fahr tractors, the D 7807 offers the popular option of four-wheel drive (D 7807A) — with efficient, mechanical drive at the front! And now, with tread width adjustable to 60 inches, you can use Deutz-Fahr four-wheel drive for all-weather, all-crop versatility — even in 30-inch row crops!

E — High-capacity hydraulic system. Powered by tandem, engine-mounted, direct-driven pumps. Gives high lifting capacity and quick response over a wide range of applications.

F — The name is Deutz-Fahr! The new D 7807 brings our line to nine models, including those previously known as "Deutz" tractors. Now the name is Deutz-Fahr — with the same high quality, performance and fuel efficiency.



SEE AND DRIVE THIS TRACTOR AT THE FOLLOWING DEALERS:

DEUTZ
REICHS FORD
TRUCK & TRACTOR
8016 Reichs Ford Rd
Frederick, MD 21701
(301) 662-7622

STAUFFER
DIESEL INC.
312 W. Main St.
New Holland, PA 17557
(717) 354-4181

IVAN J. ZOOK
FARM EQUIP.
Box 5 Star Route
Belleville, PA 17004
(717) 935-2948

DILTS FARM
EQUIPMENT
RD #2
Marion Center, PA 15759
(412) 286-9606

LINCOLN
SUPPLY CO.
RD #2
Somerset, PA 15501
(814) 443-1691

BIGLERVILLE
EQUIPMENT CENTER
AGWAY INC.
Box A 53 Third St
Biglerville, Pa. 17307
(717) 677-6145

J & M
MACHINERY CO.
Rt. 22 & 819
Greensburg, PA 15601
(412) 668-2276

Irish Setter SportBoots®
Set the standards.
SIZES B-EE
6 1/2-14
877
Red Wings BOOKS
SHOE SERVICE
107 E. STATE ST.
QUARRYVILLE, PA
717-786-2795
CLOSED WEDNESDAYS