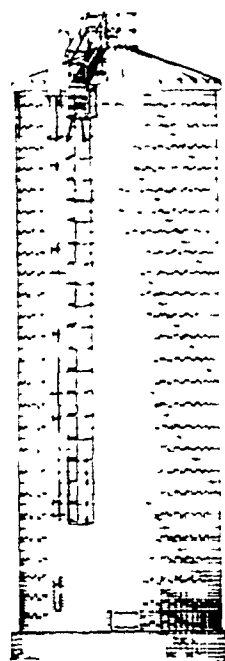


SILOS & UNLOADERS SILOS & UNLOADERS SILOS & UNLOADERS GRAIN EQUIPMENT GRAIN EQUIPMENT GRAIN EQUIPMENT GRAIN EQUIPMENT

FICKES BOTTOM UNLOADING IS THE BEST WAY TO HANDLE YOUR HAYLAGE

- Marble white color reflects 3 times better than dark color
- Corrugated Vibrated concrete staves for increased strength
- White reflective low-profile roof
- Laidig bottom unloader
- Knowledgeable experienced cordial field representatives
- Thorough skillful on time delivery & erection
- Enjoy the many benefits of bottom unloading



Phone 717-776-3129

For sale Mordge dryer model 400 used 3 yrs Speed King 8 x 36 auger Superior 8 x 52 auger Behlen 25 ton hopper bin 1000 bu round corn crib with oak floor 215-273 2548

1976 Gleaner diesel combine, model M 15 grain head w/Hart Carter floater and wobble box, exc cond, field ready, \$18,500 609 859-2381
Grain dryer MC250 \$2000 Call 215-679 7756 or 215-679 2748 after 6 PM

10,000 bu grain bin, 6 HP fan, floor, vents, spreader and unloader 6000 bu continuous dryer, Shivers unit, floor, unloader, 10 HP fan and dryer disassembled, will deliver 609 728-0010

Used Mix Mill Equipment Completely reconditioned and guaranteed 2 model D' mills two 500 lb Nutri Blenders, augers 40 ton feed factory Call for prices and details 717-637-2214

One used grain auger 1 1/2 years old, 8 x65 ex cellent condition 717 653-8783

20 ton bulk bin fully assembled Call Diane 401-364-7712

Grain dryer MC 600 continuous PTO, \$1750 Bucks Co 215-343-2444

6 x34 grain auger w/2 HP motor, \$375 Also 16 Harvest Handler belt elevator, \$250 348 White spring reset plow 3x16 \$2200 Cumb Co 717 532-3360

For sale Sukup II Stirway 4 down augers for 30 bin like new \$2000 717 667 3105

For sale Little Giant grain and bale elevator comp rebuilt \$925 or best offer 717 273-6309 anytime

DAIRY EQUIPMENT

For sale 12 500 bu grain bin 27 like new 717 667 3105

DAIRY EQUIPMENT

For Sale Kraiburg Happy Moo-Mats 15 sizes We deliver and install Vanco Sales RD 4 Box 300 Carlisle PA 17013 Phone 717 776-3494



USED EQUIPMENT — CASH AND CARRY

- (1) Bou-Matic 8 stall parlor
- (1) Surge 3 around the barn pipeline
- (1) De Laval around the barn pipeline
- (1) Thermo-Stor II
- 14 Bou-Matic detachers late style automatic take offs
- (6) Detachers Model 2100 M's with DHIA approved meters

USED TANKS

300 Gal Esco	600 Gal Milkeeper
300 Gal Girton	600 Gal Mojonner
400 Gal Girton	800 Gal Zero
400 Gal Milkeeper	850 Gal Sunset
500 Gal Girton	1500 Gal Dari Kool

INSTALLATION — PLANNING LAYOUT — SALES

SHENK'S FARM SERVICE

501 E. Woods Drive, Box 225 Lititz, PA 17543 Phone 1-717-626-1151

• Fickes Silo Top & Bottom Unloading
• Van Dale & Silo-Matic Equipment
PH: 717-284-3111

BUILDINGS & SUPPLIES

Large frame apartment building to be torn down for lumber 717-846-2473.

For Sale - 1 double hung 4 window porch unit, 1 double hung 3 window porch unit; double hung, double window unit, not yet dismantled. 215-273-3095

For Sale - Slate, various sizes, old wood siding, wooden floor, approx. 20 5 1/2" x 6" x 16" wooden pegged posts and some beams. 717-569-0737.

For Sale - 40x70 hand hewed barn to be removed. Call 7:00 noon East Berlin 717 259-9800.

GRAIN EQUIPMENT

For Sale - 16' Papec silage cutter, in good cond., Elam Kauffman, RD 2, Box 125, Honeybrook, PA 19344.

GRAIN DRYERS

NEW & USED BINS — ELEVATORS — AUGERS TURNKEY AUTOMATED SYSTEMS

Call 717-538-2591



Super B

M-C

Circle

GSI

BIG DISCOUNTS"

GRAIN DRYING & STORAGE

Prompt Unloading We Buy And Sell

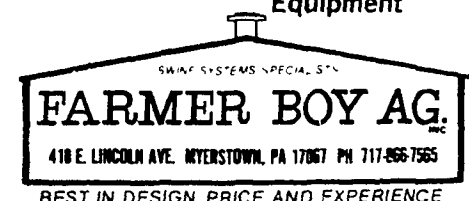
Combining and Hauling

ERWIN J. MILLER & SON (717) 656-8593

Loc: 1/2 Mile North of Bird-In-Hand on Beechdale Rd.

SEE US FOR ALL YOUR GRAIN EQUIPMENT NEEDS

- Augers
- Bulk Bins
- Grain Bins
- All Types Of Feed Handling Equipment



BEST IN DESIGN PRICE AND EXPERIENCE

Good used blue styrofoam insulation sheets. 16"x54"x3" thick, 24"x48"x2" thick, approx 1/2 of new price. Also miscellaneous butcher equipment and supplies, used ammonia and Freon equipment, 717-667-2185.
Barn 50x35' w/attached 11x30' wagon shed. 717-264-8370.

CLEARANCE! MUST BE SOLD BY SEPT. 15 SAVE ON DISCOUNTED STEEL BUILDINGS!

- ★ BUY NOW!
 - ★ LAST CHANCE TO SAVE UP TO THOUSANDS OF DOLLARS!
 - ★ FIRST COME - FIRST SERVED! GET YOURS WHILE YOU CAN!
- Here's a few examples of the Deals available to you...

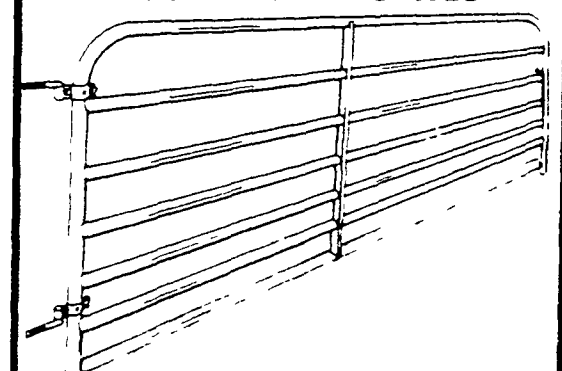
30'x40'x12' Trojan.....	'4334
30'x40'x12' S. Wall	'4499
30'x40'x16' S. Wall	'6283
30'x48'x10' S. Wall	'5605
50'x120'x16' S. Wall	'21,197
40'x60'x14' S. Wall	'7733
40'x100'x16' Trojan.....	'17,880
50'x50'x16' S. Wall	'10,824
60'x100'x16' S. Wall	'18,657

ALL BUILDINGS HAVE SOME OPTIONS SOME ARE GALVANIZED, SOME COLOR - CALL COLLECT FOR COMPLETE DETAILS

301-452-5802 304-845-8243
Coale's Steel Building Sales
Box 2, Darlington, MD 21034

Prices F.O.B. Factories. LL/WL vary per area. Be sure your building purchase meets your needs. All buildings engineer certified.

TUBULAR STEEL GATES



Seven 1-5/8" I.D. horizontal tubes spaced closer at the bottom for a pig tight gate. 50" high with adjustable clamp style hinges. All hardware needed for a complete installation is included Painted finish.

4 Length	'36.95	12 Length	'45.95
6 Length	'39.95	14 Length	'52.75
8 Length	'41.45	16 Length	'55.50
10 Length	'43.95		

ZIMMERMAN'S ANIMAL HEALTH SUPPLY

RD 4, Box 141, Lititz, PA 17543
Located 3 miles west of Ephrata 1 mile South of Rt 322 along Wood Corner Road
(717) 738-4241

DAIRY EQUIPMENT

POLY DOME CALF NURSERY

"The Igloo"



Call or write to Earle M. Zimmerman 1478 Colebrook Rd. Lebanon, PA 17042 1-(717) 272-3558

- How often should you move a wooden hutch?
- How often do you?
- Ours are easy to move yet wind resistant.
- No seams or joints to shelter bacteria.
- We are stacked up with Poly Dome Nurseries.
- Reduce our stock and increase your savings by buying now.

Special Prices Now Thru August

Clip & Save