

FARM EQUIPMENT

FOR SALE
 MF 2805 w/duals
 JD 4020 power shift w/turbo
 MF 1155 w/cab & air MF 180
 MF 550 combine w/1143 corn head
 3 field cultivators
 1250 gallon per minute irrigation pump
 MF 321 Corn head
 JD 24 Skid loader

L & M BURKHOLDER
 Ephrata, PA
 717-859-2960
 717-859-2712

FARM EQUIPMENT

FOR SALE
 1978-79 John Deere 6600 Sidehill Combine 1500 hrs. 6 row narrow corn head
 15' - 0" Grain Head
 John Deere 6 row liquid conservation corn planter
 John Deere 950 Diesel tractor approximately 450 hrs.
 Steel Liquid storage tanks - (1) 4,000 gal. (1) 2,000 gal.
 Grain Dryer - AS 600 Super B
 Bulk Feeder Marting steer stuffer

TROSS TERRAINS, INC.
 Located on Rt. 890, Six Miles South of Sunbury.
 Phone 717-286-6411 or 717-286-0215

FARM EQUIPMENT

FARM EQUIPMENT

FARM EQUIPMENT

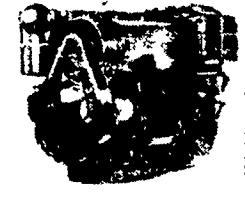
FARM EQUIPMENT

FARM EQUIPMENT



ZIMMERMAN PORTABLE ELEVATORS
 Will Carry Your Corn & Hay
 28 ft. \$1270
 32 ft. \$1345
 Also Available Every 4 Ft. (36' to 48')

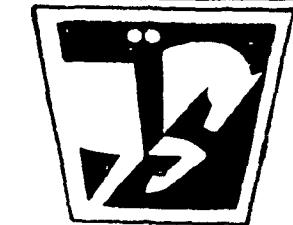
BEHLEN CORN CRIBS
 610 BU. \$690
 865 BU. \$795
 1085 BU. \$875
 1515 BU. \$1085



★ Will Install In Skid Loaders, Balers, Forage Harvesters, Etc.

First with a better way.
HESSTON FARM EQUIPMENT
HESSTON FARM EQUIPMENT
NEW HESSTON 7140 FORAGE HARVESTER w/Hydraulic Sharpener \$5850

USED TRACTORS
 • Case 930 Comfort King \$3400
 • Case 1030 Comfort King \$4400
 • Oliver 770 \$1500
 • MF 135, Gas, P.S. \$3500



WISCONSIN ENGINES
 Sales and Service

SALES & SERVICE MILLER'S REPAIR
 1 Mile North of Bird-in-Hand
 8 Miles East of Lancaster
 RD1, Bird-in-Hand, PA Ph: 717-656-6109



INTERNATIONAL AGRICULTURAL EQUIPMENT



THIS MONTH'S SPECIAL ON NEW EQUIPMENT

New Tractors on Stock IH 5088 w/cab IH 3688 w/cab IH 3288 w/rops IH 684 IH 784 IH 484	New Tillage on Stock IH 720 6F-18" toggle trip on land plow IH 720 5F-18" auto. reset plow IH 510 4F-18" plow IH 475 12' disc IH 480 13' 5" disc IH 496 19' flexwing disc IH 4500 12' field cult. IH 5500 11' Chisel-plow
New Hay Equipment IH 428 baler w/thrower IH 1190 9' mower conditioner IH 781 forage harvester IH 881 forage harvester IH 130 16' forage box	

WHITE TAG SPECIALS
 IH 881 forage harvester w/2R head \$12,950

USED TRACTORS
 IH 1086 D w/cab \$22,500
 IH 966 D hydro w/cab \$12,500
 IH 806 D w/3 pt. \$8500
 IH 684 D, w/99 hrs. \$13,650

IH Super C \$1250
 IH 484 D w/300 hrs \$10,500
 IH Super C, real nice \$2150

Waiver of finance until 9-1-83 and 11.9% interest

USED CORN HARVESTING & COMBINE EQUIPMENT
 Fox 1 Row Corn Head for a 546 . \$150
 IH 80 pull combine (nice) \$1850

MF 300 combine w/13' platform & 2R head. \$7500

USED HAY AND FORAGE EQUIPMENT
 IH 37 Baler w/thrower \$1800
 NH 770 Forage Harvester w/2 RW head and pick-up unit. \$5250
 JD 10 5' flail chopper \$350
 IH 2 rw wide and narrow head for 720 and 830 harvesters \$1650

Lamco 16' forage box w/roof .. \$1850
 IH 56 forage blower \$750
 Dion 16' forage box w/roof \$2500
 Badger 16' forage box w/roof, tandem running gear \$3500
 IH 435 baler w/thro. Coming in

USED TILLAGE
 IH 401 16' Harrow \$600
 IH 560 6F 16" plow w/cyl. \$1500
 Brillion 15' cultipacker (end transport) \$1250

JD 21' transport harrow \$1250
 JD 55 3F 16" trailer plow. \$450
 IH 550 5F 16" plow \$1250
 IH 710 5F 16" plow w/cyl. \$2250

SPREADERS AND MISC.
 Martin S1666 1533 gallon tandem spreader. \$7500
 NI Model 211 Spreader (Nice) . \$1350
 JD 300 elevator, 30' \$500

JD R gr. dr. spreader \$500
 JD 29B 100 gal. sprayer \$750
 NI 214 spreader w/hyd. endgate \$1850

USED PLANTERS AND DRILLS
 IH 56 4 row \$1250
 IH 400 4 row 38" \$1500
 JD Van Brunt drill. \$500
 IH 249 2R planter. \$500

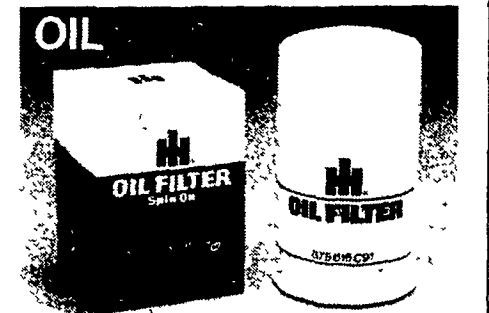
IH 400 6 R 30" Planter, w/insect \$3500
 JD 1240 4 R wide planter. \$1750

Waiver of finance until 5-1-84

MIFFLINBURG FARM SUPPLY, INC.
 East Chestnut St., Mifflinburg, PA 17844
 Phone: (717) 966-3114
 Evenings - 717-524-2924 - Frank Saner

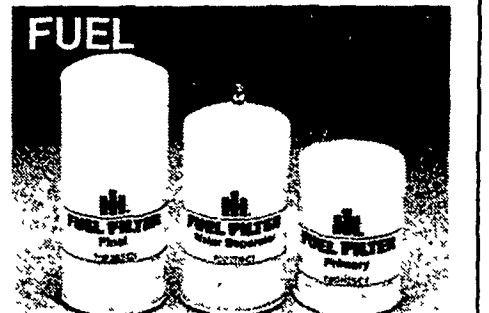
PART SMART

The best insurance policy you can buy
 ... a genuine IH filter



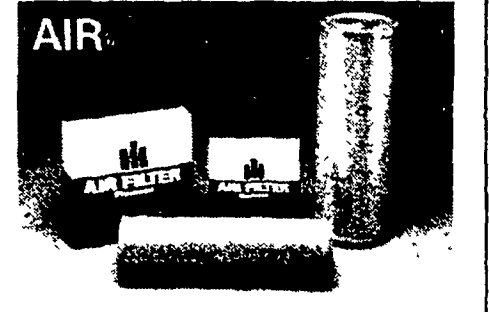
OIL
 Keep your engine efficient and clean
 Engine oil can become contaminated with carbon particles and unburned fuel. These contaminants can rob your engine of operating efficiency, damage it internally.
 666D, 86 Series, 3388, 3588, 3488
 3688, 3788, 5088, 5288, 5488, 6388, 6588, 6788
 675 616 C91 \$6.43

Typical change interval: 200 hours
Carton Of Twelve \$5.79 ea.



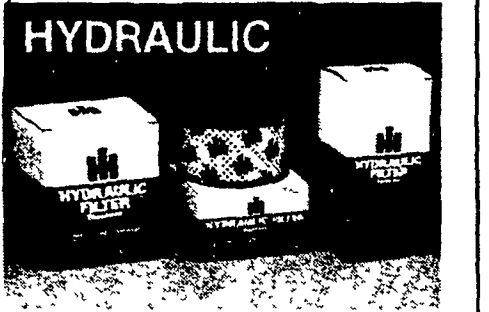
FUEL
 Genuine IH fuel filters restore lost power
 When a fuel filter plugs, your diesel engine misbehaves. If you get mistfiring and loss of power, it's probably time to change your fuel filter.
 686, 886, 966, 986, 1066, 1086, 3388, 3488, 3588, 3688, 3788, 5088, 5288, 5488, 6388, 6588 (final)
 672 603 C2 \$7.96
 66 Series, 86 Series, 3388, 3488, 3588, 3688, 3788, 5088, 5288, 5488, 6388, 6588, (primary)
 625 627 C1 8.53

Typical change interval: at loss of power



AIR
 Don't let a clogged filter cut efficiency
 3388, 3588 3788, 4786, 5088 5288
 5488, 6388, 6588, 6788 (inner) 67 975 C1 \$27.32
 (outer) 67 974 C3 32.83

Typical change interval: 200 hours



HYDRAULIC
 An exhausted filter can mean big trouble
 Don't neglect your hydraulic system. Even tiny particles that slip by an exhausted filter can mean trouble.
 966 69 878 C91 \$4.28
 All 88 Series (requires 2 internal filters) 528 493 R3 \$8.15
 All 88 Series (external filter) 137 939 C1 \$8.43

Typical change interval: each year

ERB & HENRY EQUIP., INC.
 New Berlinville, PA 19545
 PH: (215) 367-2169